
8-bit MCU with Embedded EEPROM

1. Features

- Compatible with MCS-51
- Embedded 8K Bytes OTP ROM
- Embedded 1k bits EEPROM
- 256 x 8-bit Internal RAM
- 15 Programmable I/O Lines
- 2 16-bit Timer/Counter & 1 16-bit Timer
- 2 External Interrupt Input
- Programmable Serial UART Interface
- Low Power Idle & Power-down Modes
- Watch-dog Timer
- On-chip Crystal & RC Oscillator (Selected by Bonding Option)
- Internal Power-on Reset and External Reset Supported
- 32-pin LQFP Package
- 3.3V Operating Voltage

2. General Description

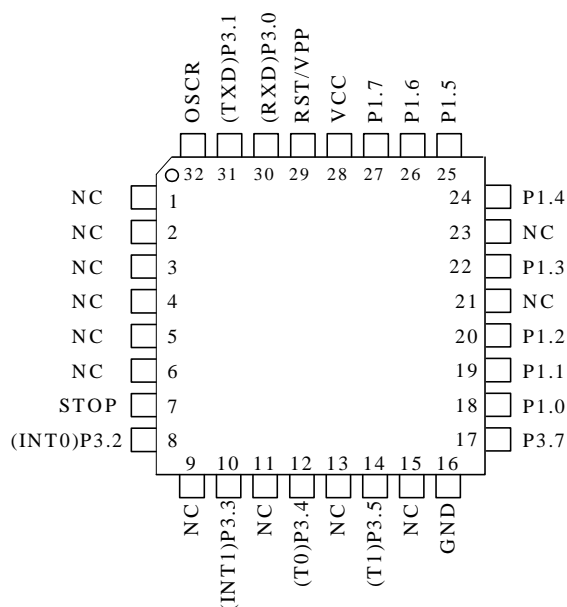
The T81L0010B is 8-bit microcontroller designed and developed with low power and high speed CMOS technology. It contains a 8K bytes OTP ROM, a 256 × 8 RAM, 1k bits EEPROM, 15 I/O lines, a watchdog timer, two 16-bit counter/timers, a seven source, two-priority level nested interrupt structure, a full duplex UART, and an on-chip oscillator and clock circuits.

In addition, the T81L0010B has two selectable modes of power reduction-idle mode and power-down mode. The idle mode freezes the CPU while allowing the RAM, timers, serial port, and interrupt system to continue functioning. The power-down mode saves the RAM contents but freezes the oscillator, causing all other chip functions to be inoperative.

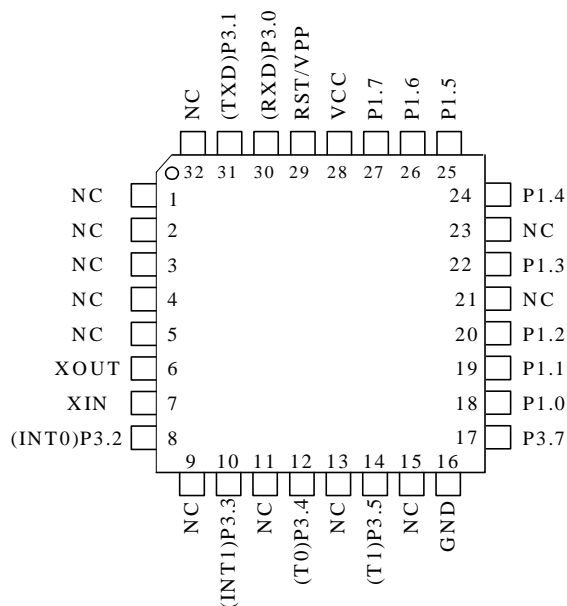
3. Order Information

| Part number | Oscillator type | Package |
|--------------|-----------------|-------------|
| T81L0010B-AL | RC | 32-pin LQFP |
| T81L0010B-BL | Crystal | 32-pin LQFP |

5. Pin Configuration



LQFP-32 For RC Oscillator
T81L0010B-AL



LQFP-32 For Crystal Oscillator
T81L0010B-BL

6. Pin Description

| Number (32-Pin) | Name | Type | Description |
|--------------------|-------------|------|---|
| 1 | NC | | No connect |
| 2 | NC | | No connect |
| 3 | NC | | No connect |
| 4 | NC | | No connect |
| 5 | NC | | No connect |
| 6(AL) | NC | | No connect |
| 6(BL) | XOUT | I | Crystal oscillator output terminal. |
| 7(AL) | STOP | O | Stop RC oscillator network. |
| 7(BL) | XIN | O | Crystal oscillator input terminal. |
| 8 | P3.2/(INT0) | I/O | General-purpose I/O pin (Default) or External interrupt source 0. |
| 9 | NC | | No connect |
| 10 | P3.3/(INT1) | I/O | General-purpose I/O pin (Default) or External interrupt source 1. |
| 11 | NC | | No connect |
| 12 | P3.4/(T0) | I/O | General-purpose I/O pin (Default) or Timer 0 external input pin. |
| 13 | NC | | No connect |
| 14 | P3.5/(T1) | I/O | General-purpose I/O pin (Default) or Timer 1 external input pin. |
| 15 | NC | | No connect |
| 16 | GND | | Ground |
| 17 | P3.7 | I/O | General-purpose I/O pin |
| 18 | P1.0 | I/O | General-purpose I/O pin |
| 19 | P1.1 | I/O | General-purpose I/O pin |
| 20 | P1.2 | I/O | General-purpose I/O pin |
| 21 | NC | | No connect |
| 22 | P1.3 | I/O | General-purpose I/O pin |
| 23 | NC | | No connect |
| 24 | P1.4 | I/O | General-purpose I/O pin |
| 25 | P1.5 | I/O | General-purpose I/O pin |
| 26 | P1.6 | I/O | General-purpose I/O pin |
| 27 | P1.7 | I/O | General-purpose I/O pin |
| 28 | VCC | | 3.3V power supply. |
| 29 | RST/VPP | I | Reset signal input or programming supply voltage input. |
| 30 | P3.0/(RXD) | I/O | General-purpose I/O pin (Default) or Serial input port. |
| 31 | P3.1/(TXD) | I/O | General-purpose I/O pin (Default) or Serial output port. |
| 32(AL) | OSCR | I | RC oscillator external resister connect pin. |
| 32(BL) | NC | | No connect |

7. Temperature Limit Ratings

| Parameter | Rating | Units |
|-----------------------------|-------------|-------|
| Operating temperature Range | -40 to +85 | °C |
| Storage Temperature Range | -55 to +125 | °C |

8. Electrical Characteristics

D.C Characteristics

| Symbol | Parameter | Conditions | Min | Typ | Max | Units |
|-----------------|--------------------------|--|-----|-----|-----|-------|
| V _{CC} | Operating Voltage | 25°C | 3.0 | 3.3 | 3.6 | V |
| I _{CC} | Operating Current | No load, V _{CC} =2.5V, 4MHz | - | - | 1.6 | mA |
| | | No load, V _{CC} =3.3V, 12MHz | - | - | 6 | mA |
| I _{PD} | Power Down Current | V _{CC} =3.3V | - | 0.1 | 1 | uA |
| V _{IH} | Hi-Level input voltage | $V_{out} \geq V_{VOH(MIN.)}$ $V_{out} \leq V_{VOL(MIN.)}$ | 2.1 | - | - | V |
| V _{IL} | Low-Level input voltage | $V_{out} \geq V_{VOH(MIN.)}$ $V_{out} \leq V_{VOL(MIN.)}$ | - | - | 0.6 | V |
| V _{OH} | Hi-Level Output voltage | V _{CC} =MIN. V _I =V _{IH} or V _{IL} I _{OH} = -7uA | 2.9 | - | - | V |
| | | I _{OH} = -45uA | 2.4 | | | |
| | | I _{OH} = -70uA | 1.9 | | | |
| V _{OL} | Low-Level Output voltage | V _{CC} =MIN. V _I =V _{IH} or V _{IL} I _{OL} =12mA | - | - | 0.2 | V |
| | | I _{OL} =25mA | | | 0.4 | |
| | | I _{OL} =40mA | | | 0.6 | |

A.C Characteristics

| Symbol | Parameter | Conditions | Min | Typ | Max | Units |
|------------------|---------------------------------|-----------------------|-----|-----|-----|--------------|
| FSYS1 | System Clock 1 (Crystal OSC) | V _{CC} =3.3V | - | 12 | 24 | MHz |
| FSYS2 | System Clock 2 (RC OSC) | V _{CC} =3.3V | - | 12 | - | MHz |
| t _{RES} | External Reset High Pulse Width | | - | 10 | - | system cycle |
| | Power ON Start up Time | | - | 20 | - | ms |

9. Function Description

9.1. Special Function Register

| | | | | | | | | |
|-----|-------|-------|-----|-----|-----|-----|--|------|
| F8H | | | | | | | | |
| F0H | B | | | | | | | |
| E8H | | | | | | | | |
| E0H | ACC | | | | | | | |
| D8H | | | | | | | | |
| D0H | PSW | | | | | | | |
| C8H | T2CON | T2MOD | | | TL2 | TH2 | | |
| C0H | | | | | | | | |
| B8H | IP | | | | | | | |
| B0H | P3 | | | | | | | |
| A8H | IE | | | | | | | |
| A0H | P2 | | | | | | | |
| 98H | SCON | SBUF | | | | | | |
| 90H | P1 | | | | | | | |
| 88H | TCON | TMOD | TL0 | TL1 | TH0 | TH1 | | |
| 80H | P0* | SP | DPL | DPH | | | | PCON |

***Note:** P0:Internal still keeping, but for pad dominate, no external pin assignment

Accumulator : ACC

ACC is the Accumulator register. The mnemonics for Accumulator-Specific instructions, however, refer to the Accumulator simply as A.

B Register : B

The B register is used during multiply and divide operations. For other instructions it can be treated as another scratch pad register.

Program Status Word : PSW

The PSW register contains program status information as detailed in

| | | | | | | | |
|----|----|----|-----|-----|----|----|---|
| CY | AC | F0 | RS1 | RS0 | OV | -- | P |
|----|----|----|-----|-----|----|----|---|

BIT SYMBOL FUNCTION

- PSW.7 CY Carry flag.
- PSW.6 AC Auxiliary Carry flag. (For BCD operations.)
- PSW.5 F0 Flag 0. (Available to the user for general purposes.)
- PSW.4 RS1 Register bank select control bit 1.
Set/cleared by software to determine working register bank. (See **Note**.)
- PSW.3 RS0 Register bank select control bit 0.
Set/cleared by software to determine working register bank. (See **Note**.)
- PSW.2 OV Overflow flag.
- PSW.1 — User-definable flag.
- PSW.0 P Parity flag.
Set/cleared by hardware each instruction cycle to indicate an odd/even number of “one” bits in the Accumulator, i.e., even parity.

NOTE: The contents of (RS1, RS0) enable the working register banks as follows:

- (0,0)— Bank 0 (00H–07H)
- (0,1)— Bank 1 (08H–0FH)
- (1,0)— Bank 2 (10H–17H)
- (1,1)— Bank 3 (18H–1FH)

Stack Pointer : SP

The Stack Pointer register is 8 bits wide. It is incremented before data is stored during PUSH and CALL executions. While the stack may reside anywhere in on-chip RAM, the Stack Pointer is initialized to 07H after a reset. This causes the stack to begin at locations 08H.

Data Pointer (DPTR) : DPH & DPL

The Data Pointer (DPTR) consists of a high byte (DPH) and a low byte (DPL). Its intended function is to hold a 16-bit address. It may be manipulated as a 16-bit register or as two independent 8-bit registers.

Ports 1.0~1.7 & 3.0~3.5 & 3.7

All Ports are the SFR latches, respectively. Writing a one to a bit of a port SFR (P1 or P3) causes the corresponding port output pin to switch high. Writing a zero causes the port output pin to switch low. When used as an input, the external state of a port pin will be held in the port SFR (i.e., if the external state of a pin is low, the corresponding port SFR bit will contain a '0'; if it is high, the bit will contain a '1').

Serial Data Buffer : SBUF

The Serial Buffer is actually two separate registers, a transmit buffer and a receive buffer. When data is moved to SBUF, it goes to the transmit buffer and is held for serial transmission. (Moving a byte to SBUF is what initiates the transmission.) When data is moved from SBUF, it comes from the receive buffer.

Timer Registers : TH0, TL0, TH1, TL1, TH2, TL2

Register pairs (TH0, TL0) and (TH1, TL1) and (TH2, TL2) are 16-bit Counting registers for Timer/Counters 0 and Timer1 and Timer2, respectively.

Control Register : IP, IE, TMOD, TCON, SCON, PCON

Special Function Registers IP, IE, TMOD, TCON, SCON, and PCON contain control and status bits for the interrupt system, the Timer/Counters, and the serial port. They are described in later sections.

Standard Serial Interface

The serial port is full duplex, meaning it can transmit and receive simultaneously. It is also receive-buffered, meaning it can commence reception of a second byte before a previously received byte has been read from the register. (However, if the first byte still hasn't been read by the time reception of the second byte is complete, one of the bytes will be lost.) The serial port receive and transmit registers are both accessed at Special Function Register SBUF. Writing to SBUF loads the transmit register, and reading SBUF accesses a physically separate receive register.

The serial port can operate in 4 modes:

Mode 0: Serial data enters and exits through RxD. TxD outputs the shift clock. 8 bits are transmitted/received (LSB first). The baud rate is fixed at 1/12 the oscillator frequency.

Mode 1: 10 bits are transmitted (through TxD) or received (through RxD): a start bit (0), 8 data bits (LSB first), and a stop bit (1). On receive, the stop bit goes into RB8 in Special Function Register SCON. The baud rate is variable.

Mode 2: 11 bits are transmitted (through TxD) or received (through RxD): start bit (0), 8 data bits (LSB first), a programmable 9th data bit, and a stop bit (1). On Transmit, the 9th data bit (TB8 in SCON) can be assigned the value of 0 or 1. Or, for example, the parity bit (P, in the PSW) could be moved into TB8. On receive, the 9th data bit goes into RB8 in Special Function Register SCON, while the stop bit is ignored. The baud rate is programmable to either 1/32 or 1/64 the oscillator frequency.

Mode 3: 11 bits are transmitted (through TxD) or received (through RxD): a start bit (0), 8 data bits (LSB first), a programmable 9th data bit, and a stop bit (1). In fact, Mode 3 is the same as Mode 2 in all respects except baud rate. The baud rate in Mode 3 is variable. In all four modes, transmission is initiated by any instruction that uses SBUF as a destination register. Reception is initiated in Mode 0 by the condition RI = '0' and REN = '1'. Reception is initiated in the other modes by the incoming start bit if REN = '1'.

Multiprocessor Communications

Modes 2 and 3 have a special provision for multiprocessor communications. In these modes, 9 data bits are received. The 9th one goes into RB8. Then comes a stop bit. The port can be programmed such that when the stop bit is received, the serial port interrupt will be activated only if RB8 = '1'. This feature is enabled by setting bit SM2 in SCON. A way to use this feature in multiprocessor systems is as follows: When the master processor wants to transmit a block of data to one of several slaves, it first sends out an address byte which identifies the target slave. An address byte differs from a data byte in that the 9th bit is '1' in an address byte and '0' in a data byte. With SM2 = '1', no slave will be interrupted by a data byte. An address byte, however, will interrupt all slaves, so that each slave can examine the received byte and see if it is being addressed. The addressed slave will clear its SM2 bit and prepare to receive the data bytes that will be coming. The slaves that weren't being addressed leave their SM2s set and go on about their business, ignoring the coming data bytes.

SM2 has no effect in Mode 0, in Mode 1 can be used to check the validity of the stop bit. In Mode 1 reception, if SM2 = '1', the receive interrupt will not active unless a valid stop bit is received.

Serial Port Control Register

The serial port control and status register is the Special Function Register SCON, shown in Figure 11. This register contains not only the mode selection bits, but also the 9th data bit for transmit and receive (TB8 and RB8), and the serial port interrupt bits (TI and RI).

Baud Rates

The baud rate in Mode 0 is fixed: Mode 0 Baud Rate = Oscillator Frequency / 12. The baud rate in Mode 2 depends on the value of bit SMOD in Special Function Register PCON. If SMOD = '0' (which is the value on reset), the baud rate is 1/64 the oscillator frequency. If SMOD = '1', the baud rate is 1/32 the oscillator frequency.

Mode 2 Baud Rate = $2^{SMOD}/64 * (\text{Oscillator Frequency})$

In the T81L0010B, the baud rates in Modes 1 and 3 are determined by the Timer 1 overflow rate.

Using Timer 1 to Generate Baud Rates

When Timer 1 is used as the baud rate generator, the baud rates in Modes 1 and 3 are determined by the Timer 1 overflow rate and the value of SMOD as follows:

Mode 1, 3 Baud Rate = $2^{SMOD}/32 * (\text{Timer 1 Overflow Rate})$

The Timer 1 interrupt should be disabled in this application. The Timer 1 itself can be configured for either "timer" or "counter" operation, and in any of its 3 running modes. In the most typical applications, it is configured for "timer" operation, in the auto-reload mode (high nibble of TMOD = 0010B). In that case the baud rate is given by the formula:

Mode 1, 3 Baud Rate = $2^{SMOD} * (\text{Oscillator Frequency}) / 32 / 12 / [256 - (TH1)]$

One can achieve very low baud rates with Timer 1 by leaving the Timer 1 interrupt enabled, and configuring the Timer to run as a 16-bit timer (high nibble of TMOD = 0001B), and using the Timer 1 interrupt to do a 16-bit software reload.

MSB

LSB

| SM0 | SM1 | SM2 | REN | TB8 | RB8 | TI | RI |
|-----|-----|-----|-----|-----|-----|----|----|
|-----|-----|-----|-----|-----|-----|----|----|

Where SM0, SM1 specify the serial port mode, as follows:

| SM0 | SM1 | Mode | Description | Baud Rate |
|-----|-----|------|----------------|---------------------------------------|
| 0 | 0 | 0 | shift register | $f_{osc} / 12$ |
| 0 | 1 | 1 | 8-bit UART | Variable |
| 1 | 0 | 2 | 9-bit UART | $UART F_{osc} / 64$ or $F_{osc} / 32$ |
| 1 | 1 | 3 | 9-bit UART | Variable |

Interrupt Enable Register : IE

MSB

LSB

| EA | wdt | ET2 | ES | ET1 | EX1 | ET0 | EX0 |
|----|-----|-----|----|-----|-----|-----|-----|
|----|-----|-----|----|-----|-----|-----|-----|

EA IE.7 Disables all interrupts. If EA = 0, no interrupt will be acknowledged. If EA = 1, each interrupt source is individually enabled or disabled by setting or clearing its enable bit.

wdt IE.6 Watchdog timer refresh flag.

ET2 IE.5 Enable or disable the Timer 2 overflow interrupt.

ES IE.4 Enable or disable the serial port interrupt.

ET1 IE.3 Enable or disable the Timer 1 overflow interrupt.

EX1 IE.2 Enable or disable External Interrupt 1.

ET0 IE.1 Enable or disable the Timer 0 overflow interrupt.

EX0 IE.0 Enable or disable External Interrupt 0.

9.2. External Register Table (for LVR, EEPROM, High/ Normal Driving)

| Register Address | | Name | Comments |
|------------------|-------|-----------|------------------------------|
| A15...A5-A0 | Hex | | |
| 100... 0010 1011 | 802bH | PWMC2 | LVR (Low Voltage Reset)* |
| 100... 0011 0000 | 8030H | Port3 HDS | Port3 I/O high driving set** |
| 100... 0011 0010 | 8032H | Port1 HDS | Port1 I/O high driving set** |
| 100... 00101000 | 8028H | SPICON | EEPROM control & setup |
| 100... 0010 1001 | 8029H | OPCODE | EEPROM opcode |
| 100... 0010 1110 | 802eH | DATAW_H | EEPROM write high byte |
| 100... 0010 1111 | 802fH | DATAW_L | EEPROM write low byte |
| 100... 0010 1100 | 802cH | DATAR_H | EEPROM read high byte |
| 100... 0010 1101 | 802dH | DATAR_L | EEPROM read low byte |

Note :

* LVR (Low Voltage Reset) address : 802bH, read/write

| MSB | | | | | | | LSB |
|--------|--------|----------|-------|-------|-------|------|-------|
| Bit 7 | Bit 6 | Bit5 | Bit 4 | Bit 3 | Bit 2 | Bit1 | Bit 0 |
| LVR[7] | LVR[6] | Reserved | | | | | |

LVR[7] : if LVR[7] write '1', low voltage reset function enable.
default is '0', low voltage reset function disable.

LVR[6] : if LVR[6] write '1' = 2.1V reset. if LVR[6] write '0' = 2.8V reset.
default is '0' = 2.8V reset.

** Port I/O high driving set

if write '0' = set I/O to high driving current mode.

if write '1' = set I/O to normal driving current mode.

default is set '1'.

Port 3 high driving address : 8030H

| MSB | | | | | | | LSB |
|---------|-------|---------|---------|---------|---------|---------|---------|
| Bit 7 | Bit 6 | Bit5 | Bit 4 | Bit 3 | Bit 2 | Bit1 | Bit 0 |
| Port3.7 | | Port3.5 | Port3.4 | Port3.3 | Port3.2 | Port3.1 | Port3.0 |

Port 1 high driving address : 8032H

| MSB | | | | | | | LSB |
|---------|---------|---------|---------|---------|---------|---------|---------|
| Bit 7 | Bit 6 | Bit5 | Bit 4 | Bit 3 | Bit 2 | Bit1 | Bit 0 |
| Port1.7 | Port1.6 | Port1.5 | Port1.4 | Port1.3 | Port1.2 | Port1.1 | Port1.0 |

9.3. EEPROM Interface

The EEPROM interface timing is fully compatible with 93C46. To access or send data from/to T81L0010B , 6 registers are going to be controlled.

EEPROM Register Control

| | | | | | | | | | |
|---------|---------|----|----|----|----|----|---------|---------|---------|
| SPICON | Default | -- | -- | -- | -- | -- | B2: R/W | B1: R/W | B0: R/W |
| | 00H | -- | -- | -- | -- | -- | Epdiv1 | Epdiv0 | Epst |
| OPCODE | | | | | | | | | W |
| | 00H | - | - | - | - | - | - | - | |
| DATAW_H | | | | | | | | | |
| DATAW_L | 00H | | | | | | | | |
| DATAR_H | | | | | | | | | |
| DATAW_L | 00H | | | | | | | | |

SPICON:

| MSB | | | | LSB | | | |
|-------|-------|------|-------|-------|--------|--------|-------|
| Bit 7 | Bit 6 | Bit5 | Bit 4 | Bit 3 | Bit 2 | Bit1 | Bit 0 |
| | | | | | Epdiv1 | Epdiv0 | Epst |

Epst: start EEPROM timing. “1” to start and will be auto cleared after timing finish.

Epdiv[1..0]: divide input clock into EEPROM system clock.

10: divide by 64

01: divide by 32

else: divide by 16

OPCODE

| MSB | | | | LSB | | | |
|---------|-------|------|-------|---------|-------|------|-------|
| Bit 7 | Bit 6 | Bit5 | Bit 4 | Bit 3 | Bit 2 | Bit1 | Bit 0 |
| OP Code | | | | address | | | |

| Instruction Set | OP Code | Address | Input Data |
|-----------------------------|---------|---------|------------|
| Read | 10 | A5-A0 | |
| WEN (Write Enable) | 00 | 11xxxx | |
| Write | 01 | A5-A0 | D15-D0 |
| WRALL (Write All Registers) | 00 | 01xxxx | D15-D0 |
| WDS (Write Disable) | 00 | 00xxxx | |
| Erase | 11 | A5-A0 | |
| ERAL | 00 | 10xxxx | |

9.4. I/O Ports

Port1

Port 1 is an 8-bit bi-directional I/O port with internal pull-ups. Port 1 output buffers can sink/source four external TTL device inputs. When port 1 pins are written as 1's, these pins are pulled high by the internal pull-ups and can be used as inputs. As inputs, Port 1 pins that are externally being pulled low will source current because of the internal pull-ups.

Port 3

Port 3 is an 8-bit bi-directional I/O port with internal pull-ups. Port 3 output buffers can sink/source four external TTL device inputs. When port 3 pins are written as 1's, these pins are pulled high by the internal pull-ups and can be used as inputs. As inputs, Port 3 pins that are externally being pulled low will source current because of the internal pull-ups.

Port 3 also serves the functions of various special features, as listed below:

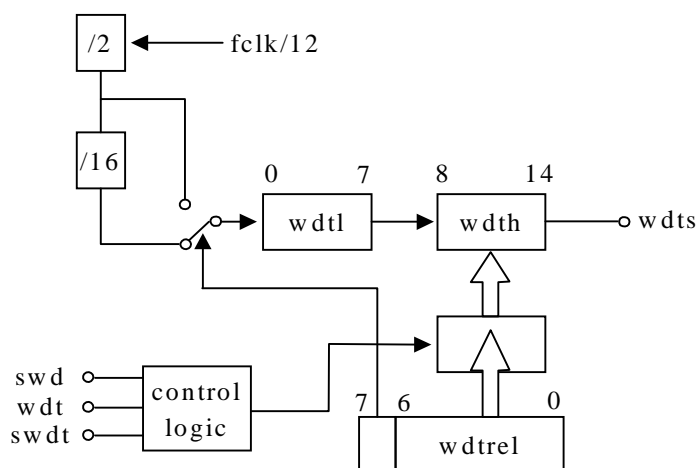
- P3.0 RXD (serial input port)
- P3.1 TXD (serial output port)
- P3.2 INT0 (external interrupt 0)
- P3.3 INT1 (external interrupt 1)
- P3.4 T0 (timer 0 external input)
- P3.5 T1 (timer 1 external input)
- P3.7 General purpose I/O only

Watchdog Timer

The watchdog timer is a 16-bit counter that is incremented once every 24 or 384 clock cycles. After an external reset the watchdog timer is disabled and all registers are set to zeros.

Watchdog Timer structure

The watchdog consists of 16-bit counter wdt, reload register wdtrel, prescalers by 2 and by 16 and control logic.



Watchdog block diagram

Start procedure

There are two ways to start the watchdog. One method, called hardware automatic start, is based on examining the level of signal *swd* during active internal *rst* signal. When this condition is met, the watchdog will start running automatically with default settings (all registers set to zeros). When this criterion is not met during active internal *rst* signal, a programmer can start the watchdog later. It will occur when signal *swd* becomes active. Once the watchdog is started it cannot be stopped unless internal *rst* signal becomes active. When *wdt* registers enters the state 7CFFh, asynchronous *wdts* signal will become active. The signal *wdts* sets the bit 6 in *ip0* register and requests reset state. The *wdts* is cleared either by *rst* signal or change of the state of the *wdt* timer.

Refreshing the watchdog timer

The watchdog timer must be refreshed regularly to prevent reset request signal from becoming active. This requirement imposes obligation on the programmer to issue two followed instructions. The first instruction sets *wdt* and the second one *swdt*. The maximum allowed delay between settings of the *wdt* and *swdt* is 12 clock cycles. While this period has expired and *swdt* has not been set, *wdt* is automatically reset, otherwise the watchdog timer is reloaded with the content of the *wdtrel* register and *wdt* is automatically reset.

Special Function Registers

a) Interrupt Enable 0 register (ien0)

The ien0 register (address : A8)

| MSB | | | | LSB | | | |
|-----|-----|-----|-----|-----|-----|-----|-----|
| eal | wdt | et2 | es0 | et1 | ex1 | et0 | ex0 |

The ien0 bit functions

| Bit | Symbol | Function |
|--------|--------|---|
| ien0.6 | wdt | Watchdog timer refresh flag. Set to initiate a refresh of the watchdog timer. Must be set directly before swdt is set to prevent an unintentional refresh of the watchdog timer. The wdt is reset by hardware 12 instruction cycles after it has been set. |

Note: other bits are not used to watchdog control
The ien0 bit functions

b) Interrupt Enable 1 register (ien1)

The ien1 register (Address : B8)

| MSB | | | | LSB | | | |
|-----|------|-----|----|-----|-----|-----|-----|
| - | swdt | pt2 | ps | pt1 | px1 | pt0 | px0 |

The ien1 bit functions

| Bit | Symbol | Function |
|--------|--------|--|
| Ien1.6 | swdt | Watchdog timer start refresh flag. Set to active/refresh the watchdog timer. When directly set after setting wdt, a watchdog timer refresh is performed. Bit swdt is reset by hardware 12 instruction cycles after it has been set. |

Pay attention that when write ien1.6, it write the swdt bit, when read ien1.6, we will read out the wdts bit. Ie. Watchdog timer status flag. Set by hardware when the watchdog timer was started.

c) Watchdog Timer Reload register (wdtrel)

The wdtrel register (Address : 86)

| MSB | | | | LSB | | | |
|-----|---|---|---|-----|---|---|---|
| 7 | 6 | 5 | 4 | 3 | 2 | 1 | 0 |

The wdtrel bit functions

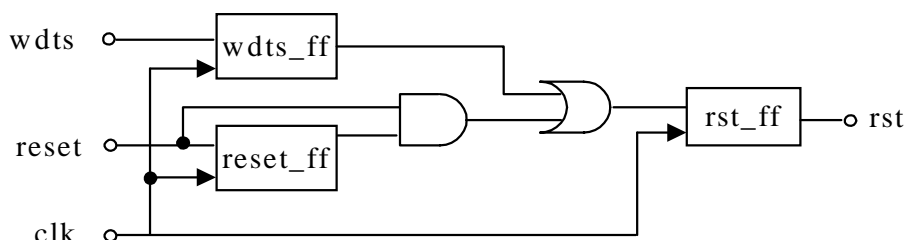
| Bit | Symbol | Function |
|----------------------|--------|---|
| wdtrel.7 | 7 | Prescaler select bit. When set, the watchdog is clocked through an additional divide-by-16 prescaler |
| wdtrel.6 to wdtrel.0 | 6-0 | Seven bit reload value for the high-byte of the watchdog timer. This value is loaded to the wdt when a refresh is triggered by a consecutive setting of bits wdt and swdt |

The wdtrel register can be loaded and read any time

WDT Reset

A high on reset pin or watchdog reset request for two clock cycles while the oscillator is running resets the device.

Diagram



Reset timing

a) External hardware reset

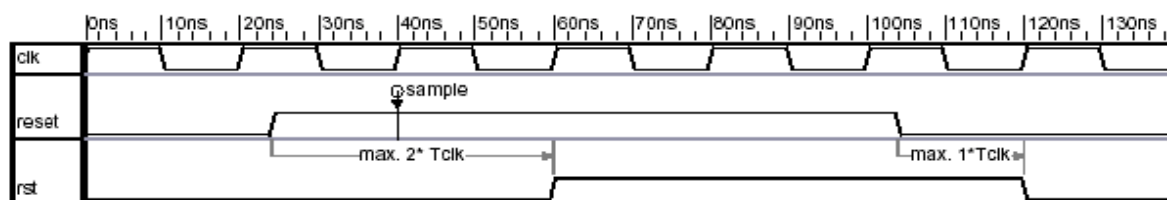


Figure External reset timing

****Note:**

clk: external clock input

Tclk: clock period

reset: external reset input

rst: internally generated reset signal

b) Watchdog timer reset

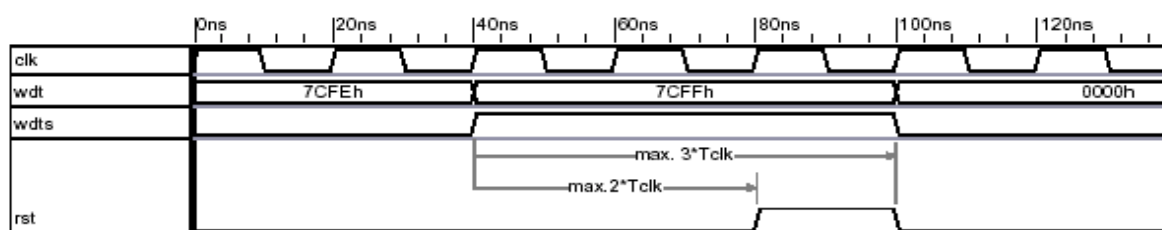


Figure Watchdog reset timing

****Note:**

clk: external clock input

Tclk: clock period

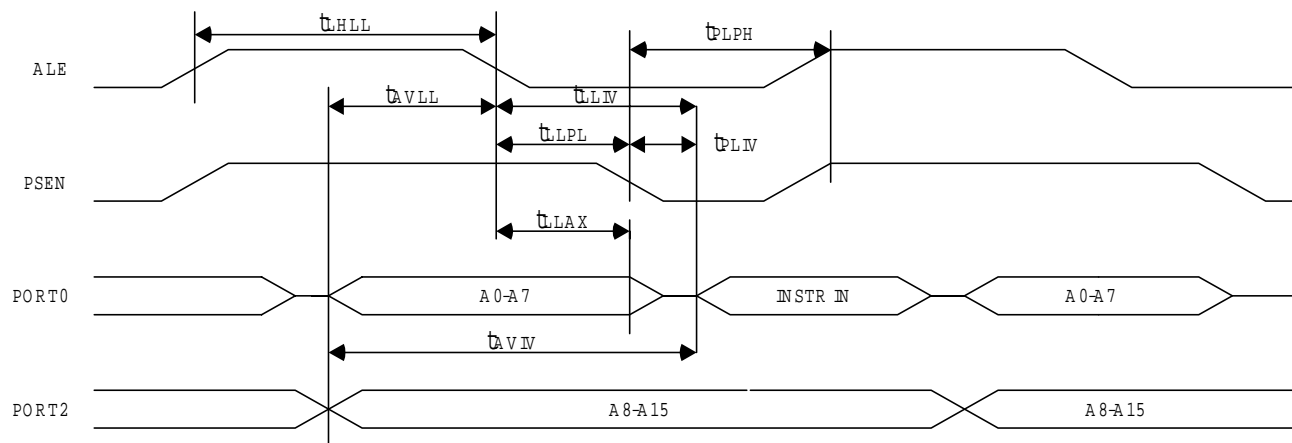
wdt: watchdog timer registers

wdts: watchdog timer status flag

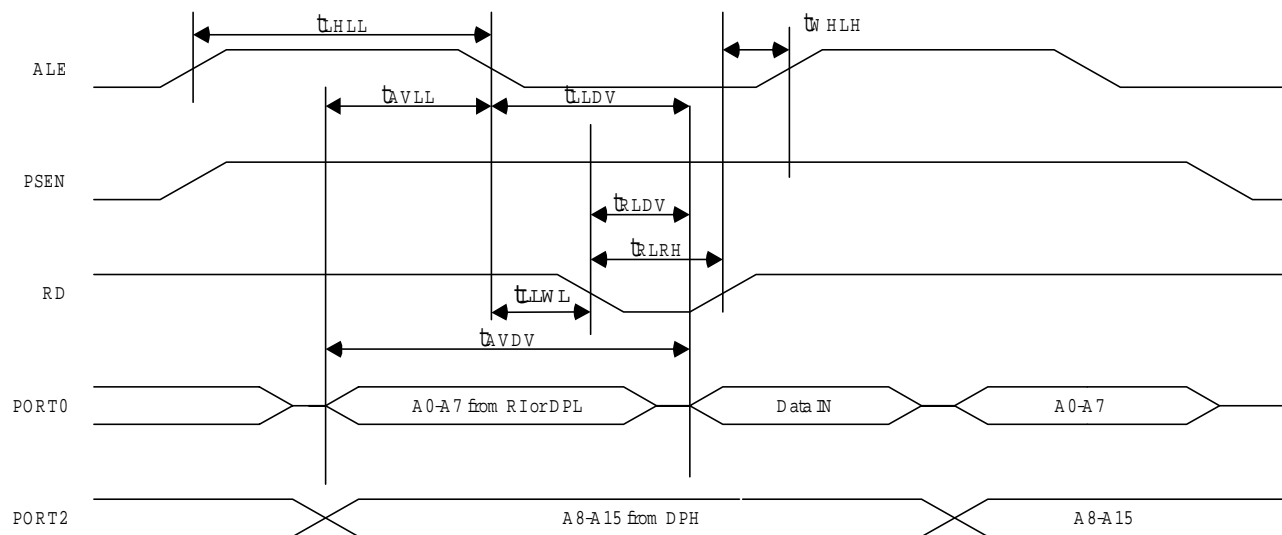
reset: external reset input

rst: internally generated reset signal

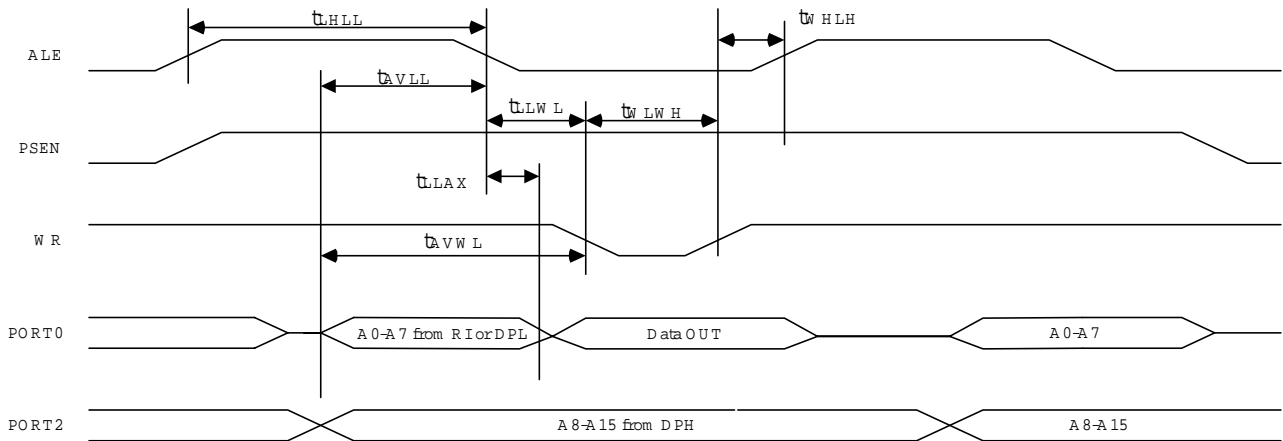
10. Timing Diagram



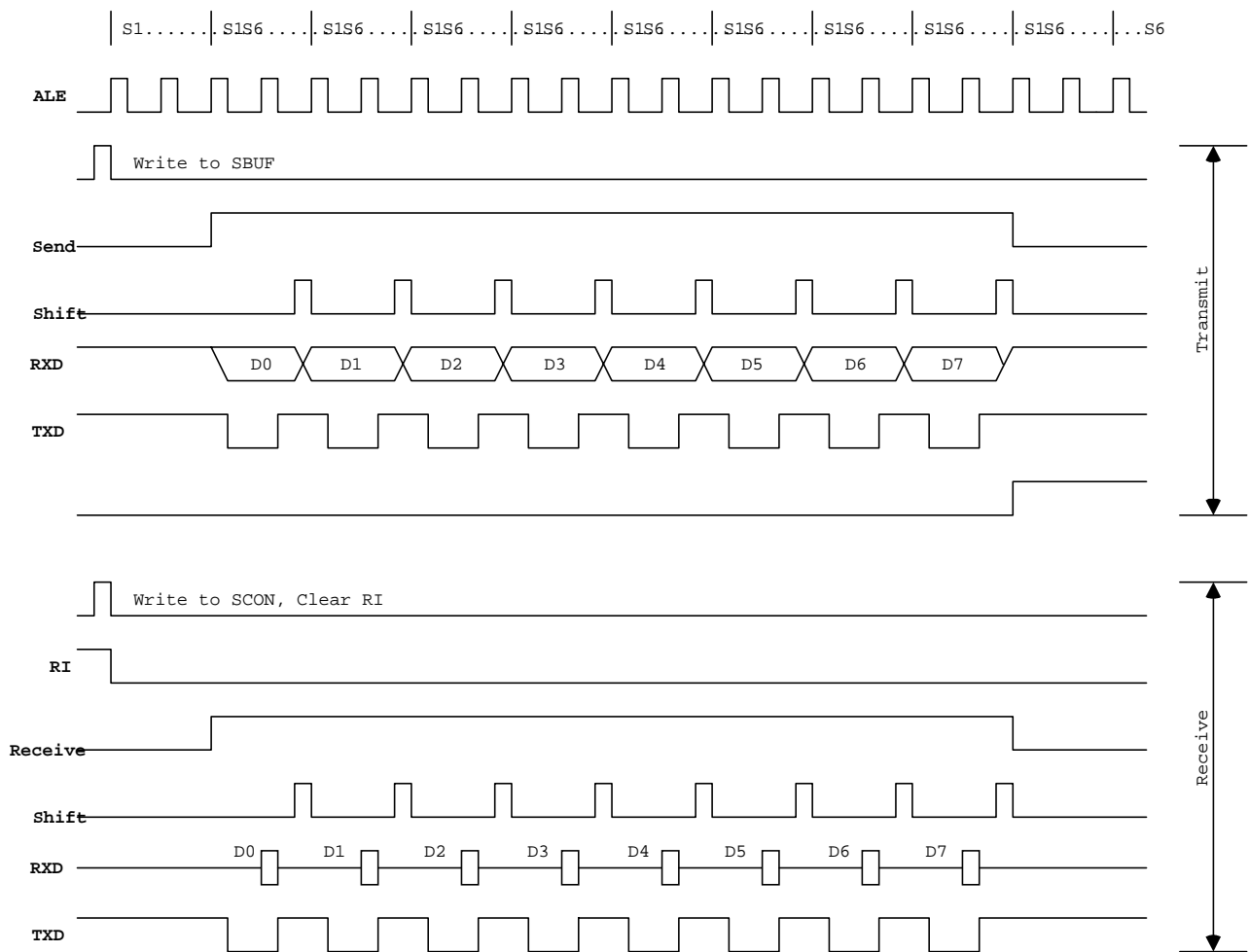
External Program Memory Read Cycle



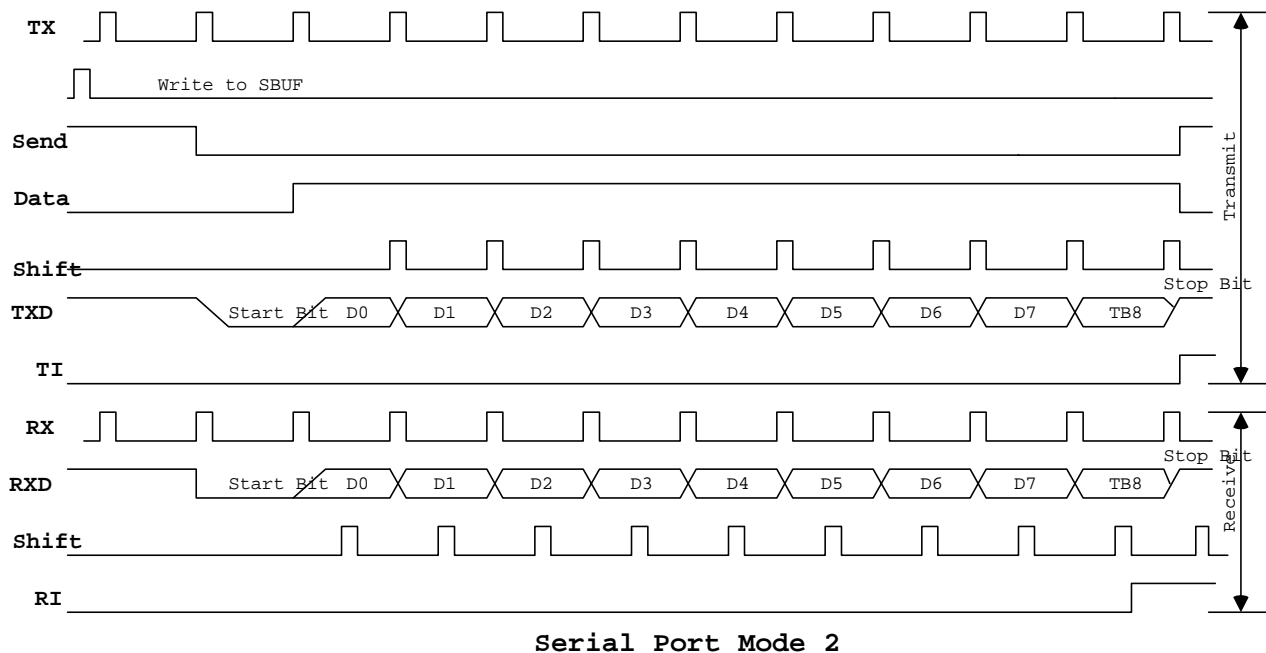
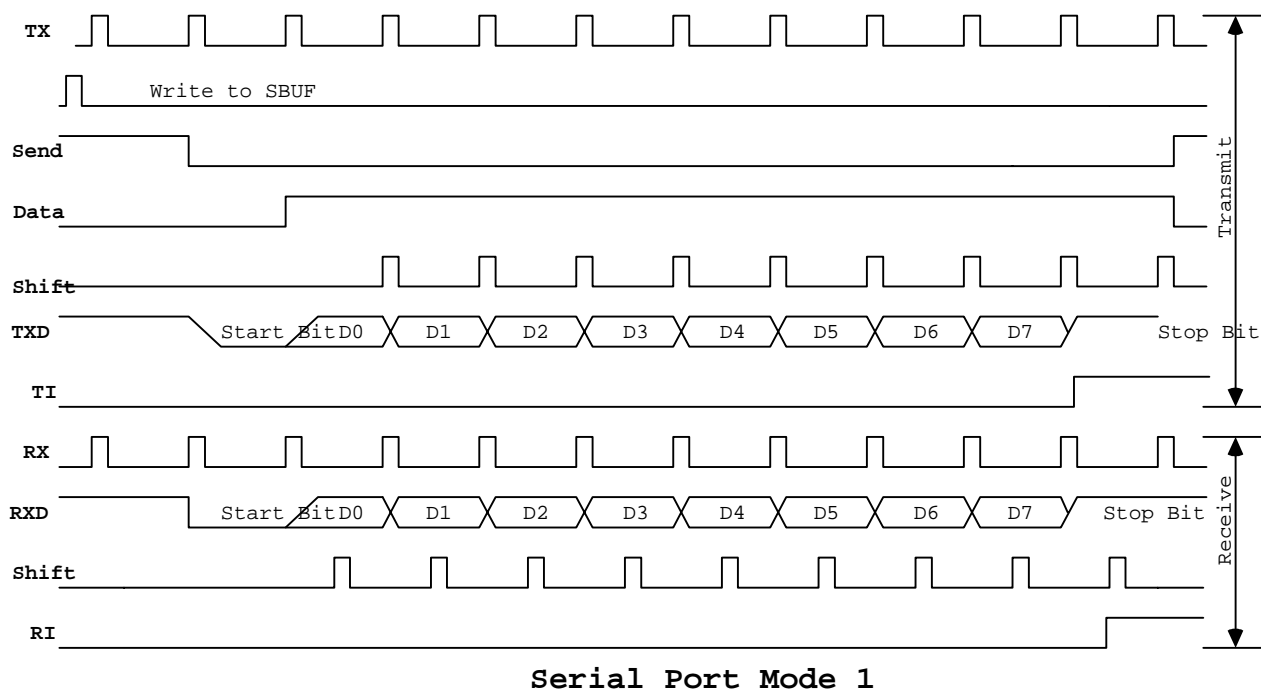
External Data Memory Read Cycle



External Data Memory Write Cycle

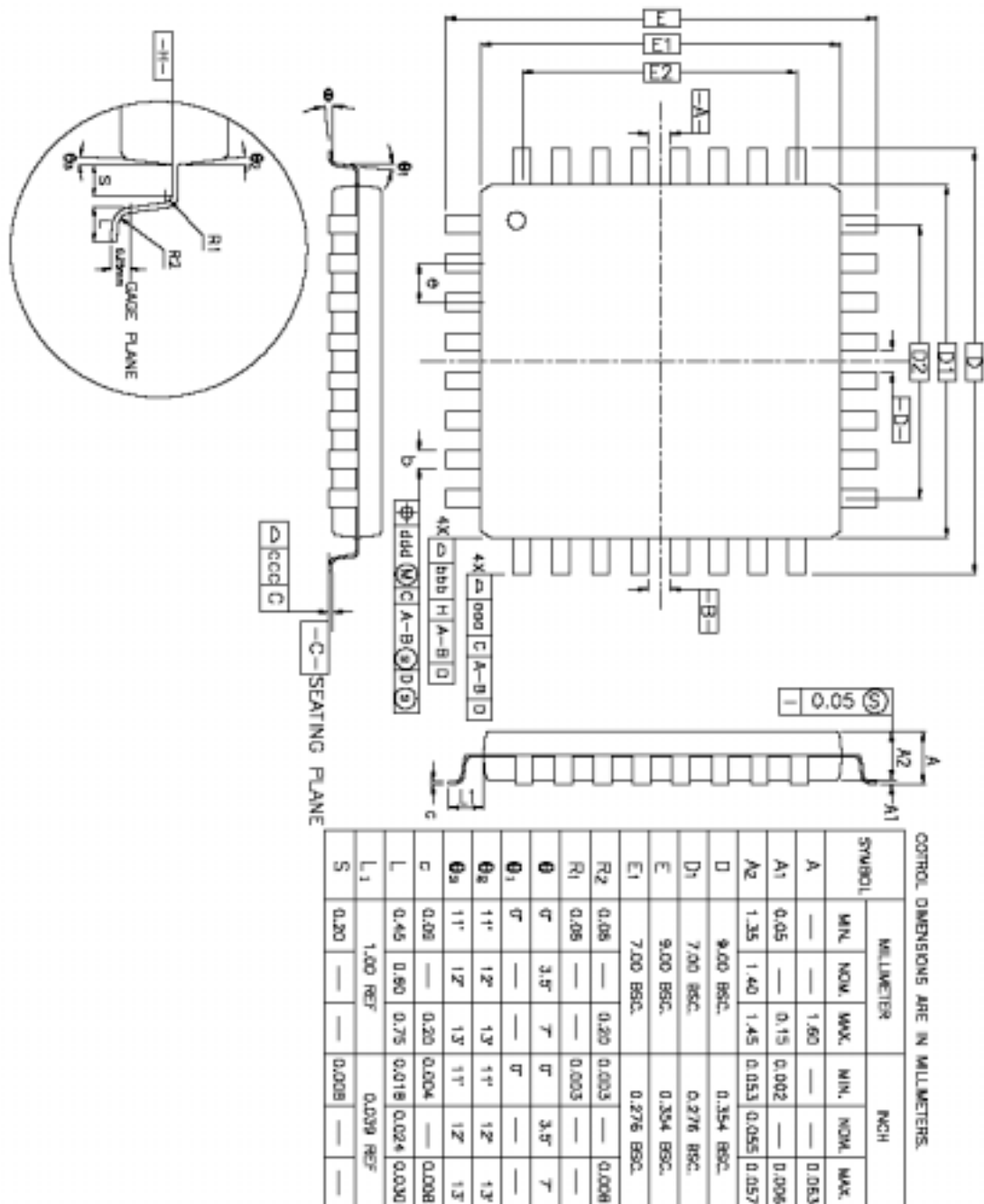


Serial Port Mode 0



PACKAGE DIMENSIONS

- LQFP-32 Package



| SYMBOL | 32L | | | | | | 44L | | | | | | 48L | | | | | |
|---------------------------------|------------|------|------|------------|-------|-------|------------|------|------|------------|-------|-------|------------|------|------|------------|-------|-------|
| | MILLIMETER | | | INCH | | | MILLIMETER | | | INCH | | | MILLIMETER | | | INCH | | |
| | MIN. | NOM. | MAX. | MIN. | NOM. | MAX. | MIN. | NOM. | MAX. | MIN. | NOM. | MAX. | MIN. | NOM. | MAX. | MIN. | NOM. | MAX. |
| b | 0.30 | 0.35 | 0.45 | 0.012 | 0.014 | 0.018 | 0.17 | 0.20 | 0.27 | 0.007 | 0.008 | 0.011 | 0.17 | 0.20 | 0.27 | 0.007 | 0.008 | 0.011 |
| e | 0.60 BSC. | | | 0.031 BSC. | | | 0.50 BSC. | | | 0.020 BSC. | | | 0.50 BSC. | | | 0.020 BSC. | | |
| D2 | 5.60 | | | 0.220 | | | 5.00 | | | 0.197 | | | 5.00 | | | 0.217 | | |
| E2 | 5.60 | | | 0.220 | | | 5.00 | | | 0.197 | | | 5.60 | | | 0.217 | | |
| TOLERANCES OF FORM AND POSITION | | | | | | | | | | | | | | | | | | |
| aaa | 0.20 | | | 0.008 | | | 0.20 | | | 0.008 | | | 0.20 | | | 0.008 | | |
| bbb | 0.20 | | | 0.008 | | | 0.20 | | | 0.008 | | | 0.20 | | | 0.008 | | |
| ccc | 0.10 | | | 0.003 | | | 0.08 | | | 0.003 | | | 0.08 | | | 0.003 | | |
| ddd | 0.20 | | | 0.008 | | | 0.08 | | | 0.003 | | | 0.08 | | | 0.003 | | |

NOTES :

- DIMENSIONS D1 AND E1 DO NOT INCLUDE MOLD PROTRUSION.
ALLOWABLE PROTRUSION IS 0.25mm PER SIDE. D1 AND E1 ARE
MAXIMUM PLASTIC BODY SIZE DIMENSIONS INCLUDING MOLD MISMATCH.
- DIMENSION b DOES NOT INCLUDE DAMBAR PROTRUSION.
ALLOWABLE DAMBAR PROTRUSION SHALL NOT CAUSE THE
LEAD WIDTH TO EXCEED THE MAXIMUM b DIMENSION BY
MORE THAN 0.08mm.
DAMBAR CAN NOT BE LOCATED ON THE LOWER RADIUS
OR THE FOOT. MINIMUM SPACE BETWEEN PROTRUSION
AND AN ADJACENT LEAD IS 0.07mm FOR 0.4mm and
0.5mm PITCH PACKAGES.
- ALL DIMENSION OF 44L WERE BASE ON THOSE OF 48L SINCE
THEY ARE NOT MENTIONED IN JEDEC SPEC MS-026.