

LOW CAPACITANCE ISOLATED VSIP® TVS DIODE ARRAY

APPLICATIONS

- ✓ RS-232, and RS-423 Data Lines
- ✓ T1/E1 & T3/E3
- ✓ ATM Circuit Interface
- ✓ ADSL/HDSL & ISDN Interface
- ✓ V.34/V.90
- ✓ Cable Modem Intra-Structure Protection

IEC COMPATIBILITY (EN61000-4)

- ✓ 61000-4-2 (ESD): Air - 15kV, Contact - 8kV
- ✓ 61000-4-4 (EFT): 40A - 5/50ns
- ✓ 61000-4-5 (Surge): 24A, 8/20µs - Level 2(Line-Gnd) & Level 3(Line-Line)

FEATURES

- ✓ 600 Watts Peak Pulse Power per Line ($t_p = 10/1000 \mu s$)
- ✓ Lead Spacing of 0.100 inches
- ✓ ESD Protection > 40 kilovolts
- ✓ High Surge Capability
- ✓ Low Capacitance < 50 pF
- ✓ Available in 3 Voltage Types Ranging from 5.0V to 12V

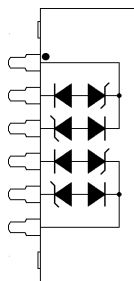
MECHANICAL CHARACTERISTICS

- ✓ Molded Plastic Package
- ✓ Weight 1.5 grams (Approximate)
- ✓ Flammability Rating UL 94V-0
- ✓ Device Marking: Part Number & Logo
- ✓ Pin 1 Indicated By DOT on Package

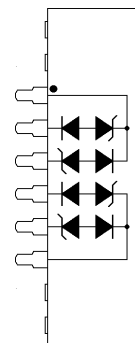


CIRCUIT DIAGRAMS

8 PIN VSIP PACKAGE



10 PIN VSIP PACKAGE



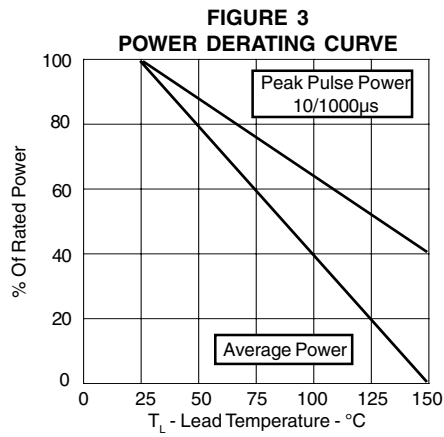
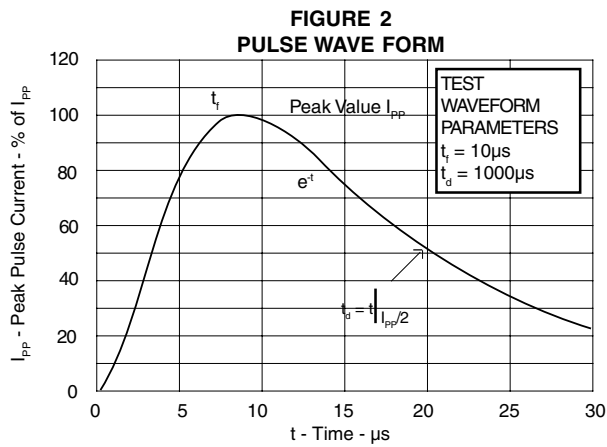
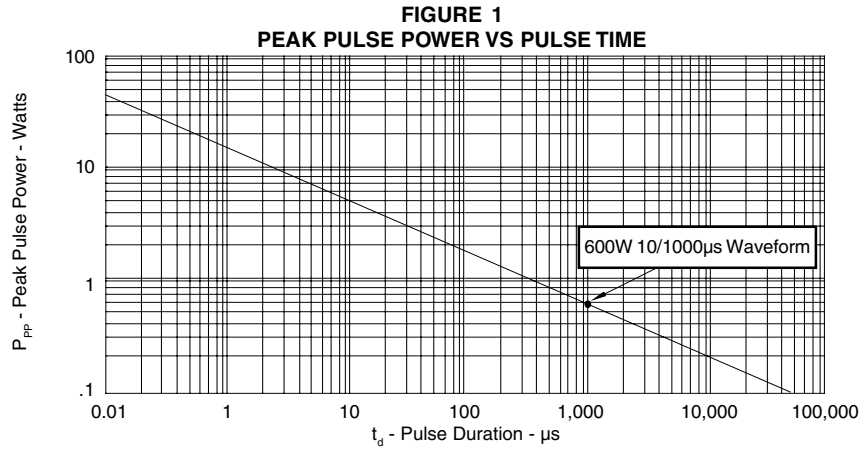
DEVICE CHARACTERISTICS

MAXIMUM RATINGS @ 25°C Unless Otherwise Specified			
PARAMETER	SYMBOL	VALUE	UNITS
Peak Pulse Power ($t_p = 10/1000\mu s$) - See Figure 1	P_{PP}	600	Watts
Operating Temperature	T_J	-55°C to 150°C	°C
Storage Temperature	T_{STG}	-55°C to 150°C	°C

ELECTRICAL CHARACTERISTICS PER LINE @ 25°C Unless Otherwise Specified							
PART NUMBER (See Note 1)	DEVICE MARKING	RATED STAND-OFF VOLTAGE (See Note 2)	MINIMUM BREAKDOWN VOLTAGE	MAXIMUM CLAMPING VOLTAGE (See Fig. 2)	MAXIMUM CLAMPING VOLTAGE (See Fig. 2)	MAXIMUM LEAKAGE CURRENT	MAXIMUM CAPACITANCE
		V_{WM} VOLTS	@ 1mA $V_{(BR)}$ VOLTS	@ $I_p = 10A$ V_C VOLTS	@ 10/1000 μs $V_C @ I_{PP}$	@ V_{WM} I_D μA	0V @ 1 MHz C pF
VSB06P05LCI	VSB06P05LCI	5	6.0	12.5	16.5 @ 36	300	50
VSB06P6.5LCI	VSB06P6.5LCI	6.5	7.2	11.6	15.6 @ 38	300	50
VSB06P12LCI	VSB06P12LCI	12	13.3	18.8	22.8 @ 26	2	50

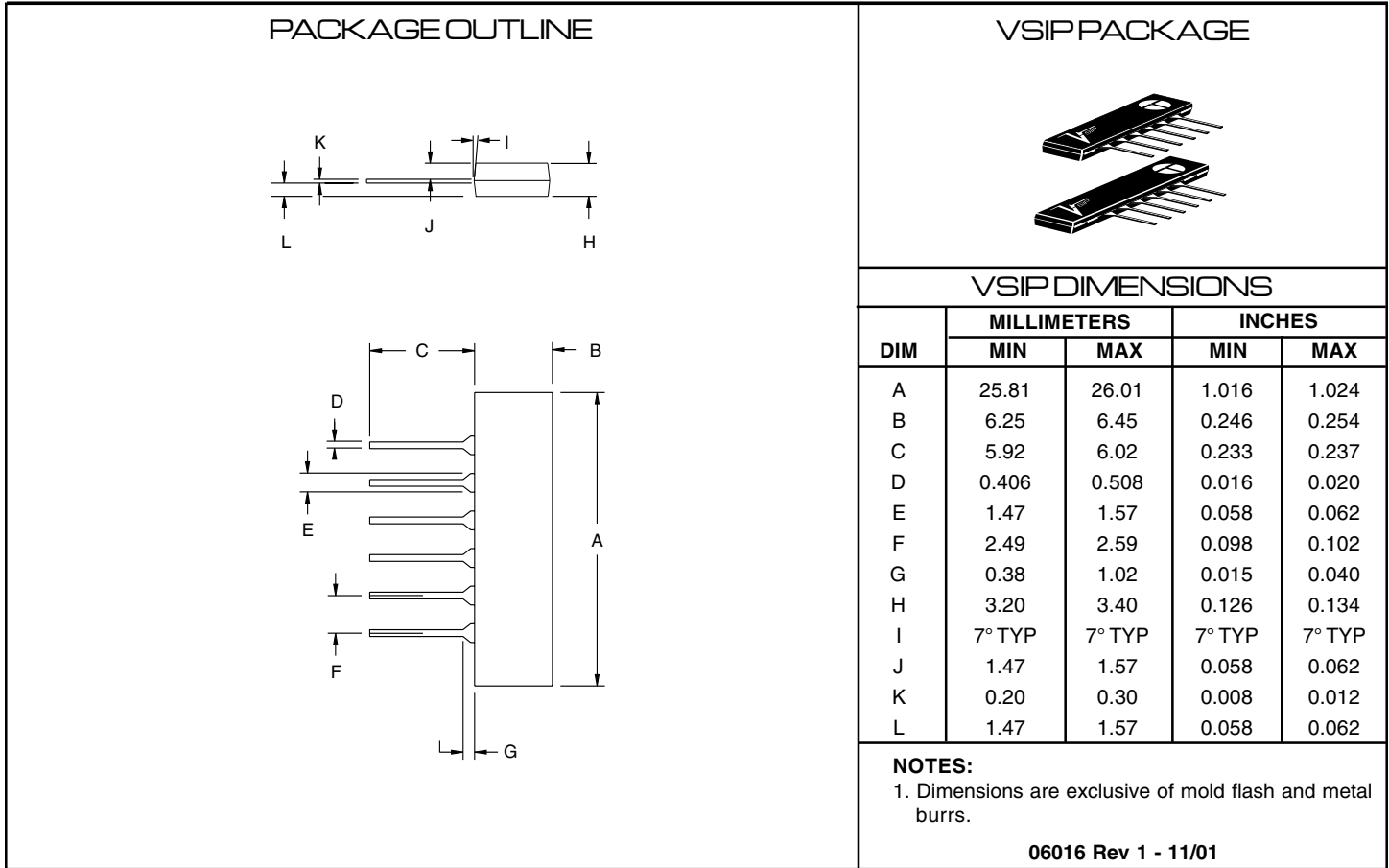
Note 1: Do not surge from pins 2 to 1, 1 to 3 or 4 to 6, 6 to 5. PIV typically greater than 100 volts for each rectifier diode.

GRAPHS



VSB06P05LCI thru VSB06P12LCI

PACKAGE OUTLINE & DIMENSIONS



PACKAGING:

Product Shipped in Tubes of 18 pcs per Tube

Protek Devices
 2929 South Fair Lane, Tempe, AZ 85282
 Tel: 602-431-8101 Fax: 602-431-2288
 E-Mail: sales@protekdevices.com
 Web Site: www.protekdevices.com

COPYRIGHT © ProTek Devices 2001

SPECIFICATIONS: ProTek reserves the right to change the electrical and or mechanical characteristics described herein without notice (except JEDEC).

DESIGN CHANGES: ProTek reserves the right to discontinue product lines without notice, and that the final judgement concerning selection and specifications is the buyer's and that in furnishing engineering and technical assistance, ProTek assumes no responsibility with respect to the selection or specifications of such products.