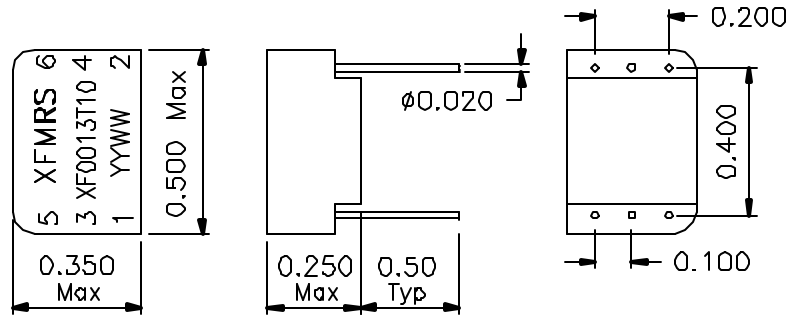
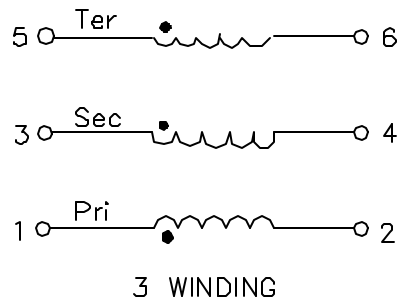


1. Dimensions:



2. Schematic:



3. Electrical Specifications: @25°C

Isolation Voltage: 1500Vrms
 Turns Ratio: 1:0.5:0.5 ±2%
 PRI OCL: 1.5mH Minimum @100KHz 50mV
 Leakage Inductance: 0.30uH Maximum @100KHz 50mV
 Cw/w: 18pF Maximum @100KHz 50mV
 PRI DCR: 0.70 ohms Maximum (PIN1-2)
 SEC DCR: 0.50 Ohms Maximum (PIN3-4)
 ET Constant: 16V-uS

Notes:

1. Solderability: Leads shall meet MIL-STD-202, Method 208D for solderability.
2. Flammability: UL94V-0
3. ASTM oxygen index: > 28%
4. Insulation System: Class F 155°C. UL file E151556
5. Operating Temperature Range: All listed parameters are to be within tolerance from -40°C to +85°C
6. Storage Temperature Range: -55°C to +125°C
7. Aqueous wash compatible

DOC. REV. A/1

XFMRs Inc	Title: T1/CEPT/ISDN-PRI TRANSFORMERS		
	UNLESS OTHERWISE SPECIFIED		P/N: XF0013T10
	TOLERANCES:		REV. A
	.xxx ±0.010		DWN. 廖玉坤 Jan-19-00
Dimensions in Inch		CHK. 李清儿 Jan-19-00	
SCALE 2:1 SHT 1 OF 1		APP. Joe Huff Jan-19-00	