

Crystal filter

QF10.7-10000/04



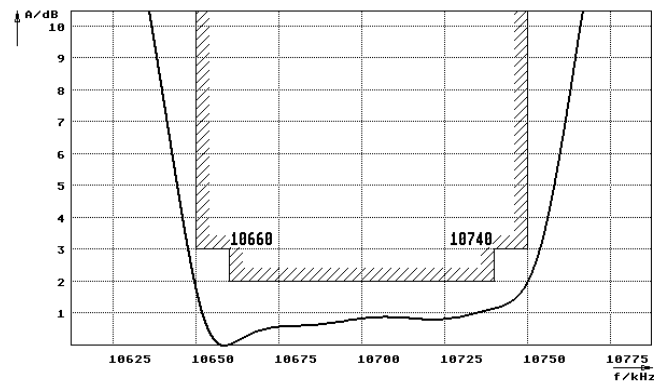
Application

- 4 pol filter
- i.f.- filter
- use in mobile and stationary transceivers

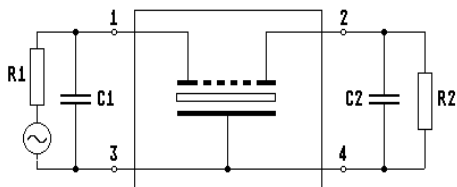
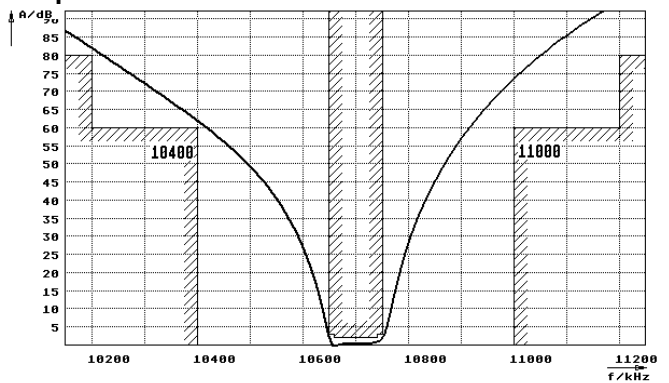
Limiting values		Unit	Value
Center frequency	f_0	MHz	10.7 ± 1 kHz
Insertion loss		dB	≤ 4.5
Pass band at 3.0 dB		kHz	± 50.00
Ripple in pass band	$f_0 \pm 40.00$ kHz (spurious responses up to 3 dB accepted)	dB	≤ 2.0
Stop band attenuation	$f_0 \pm 300$ kHz	dB	≥ 60
	$f_0 \pm 500$ kHz	dB	> 80
Alternate attenuation		dB	> 90
Spurious response		dB	> 50
Terminating impedance Z			
R1 C1		Ohm/pF	50 0
R2 C2		Ohm/pF	50 0
Operating temp. range		° C	-20... +70

Characteristics QF10.7-10000/04

Pass band



Stop band



- Pin connections:
- 1 Input
 - 2 Output
 - 3 Ground-Input
 - 4 Ground-Output

