



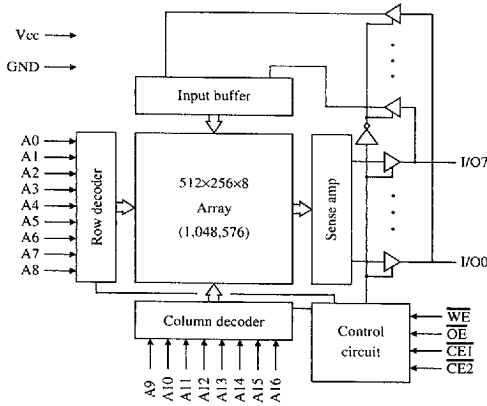
128K×8 CMOS SRAM

Features

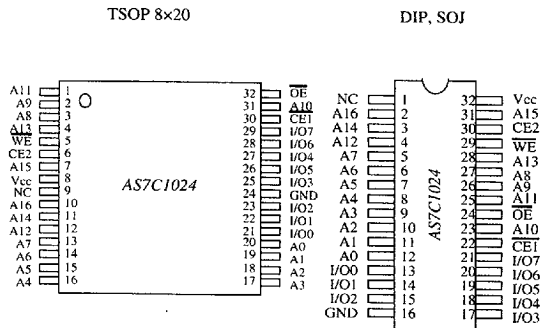
- Organization: 131,072 words × 8 bits
- High speed
 - 10/12/15/20/25 ns address access time
 - 3/3/4/5/6 ns output enable access time
- Low power consumption
 - Active: 770 mW max (10 ns cycle)
 - Standby: 55 mW max, CMOS I/O
 - Very low DC component in active power
- 2.0V data retention
- Equal access and cycle times
- Easy memory expansion with $\overline{CE1}$, $\overline{CE2}$, \overline{OE} inputs
- TTL/LVTTL-compatible, three-state I/O
- 32-pin JEDEC standard packages
 - 300 mil PDIP and SOJ
 - Socket compatible with 7C512
 - 400 mil PDIP and SOJ
 - 8×20 TSOP
- ESD protection ≥ 2000 volts
- Latch-up current ≥ 200 mA
- 3.3V version available (AS7C31024)

SRAM

Logic block diagram



Pin arrangement



Selection guide

| | 7C1024-10 | 7C1024-12 | 7C1024-15 | 7C1024-20 | 7C1024-25 | Unit |
|-----------------------------------|-----------|-----------|-----------|-----------|-----------|------|
| Maximum address access time | 10 | 12 | 15 | 20 | 25 | ns |
| Maximum output enable access time | 3 | 4 | 4 | 5 | 6 | ns |
| Maximum operating current | AS7C1024 | 140 | 130 | 120 | 100 | mA |
| | AS7C31024 | | 75 | 70 | 60 | mA |
| Maximum CMOS standby current | 10.0 | 10.0 | 10.0 | 10.0 | 10.0 | mA |

Shaded areas contain advance information.

9003449 0000823 248

ALLIANCE SEMICONDUCTOR



Functional description

The AS7C1024 and AS7C31024 are high performance CMOS 1,048,576-bit Static Random Access Memories (SRAM) organized as 131,072 words × 8 bits. It is designed for memory applications where fast data access, low power, and simple interfacing are desired.

Equal address access and cycle times (t_{AA} , t_{RC} , t_{WC}) of 10/12/15/20/25 ns with output enable access times (t_{OE}) of 3/3/4/5/6 ns are ideal for high performance applications. Active high and low chip enables ($\overline{CE1}$, $CE2$) permit easy memory expansion with multiple-bank memory systems.

When $\overline{CE1}$ is HIGH or $CE2$ is LOW the device enters standby mode. The standard AS7C1024 is guaranteed not to exceed 55 mW power consumption in standby mode. Both devices offer 2.0V data retention.

A write cycle is accomplished by asserting write enable (\overline{WE}) and both chip enables ($\overline{CE1}$, $CE2$). Data on the input pins I/O0-I/O7 is written on the rising edge of \overline{WE} (write cycle 1) or the active-to-inactive edge of $\overline{CE1}$ or $CE2$ (write cycle 2). To avoid bus contention, external devices should drive I/O pins only after outputs have been disabled with output enable (\overline{OE}) or write enable (\overline{WE}).

A read cycle is accomplished by asserting output enable (\overline{OE}) and both chip enables ($\overline{CE1}$, $CE2$), with write enable (\overline{WE}) HIGH. The chip drives I/O pins with the data word referenced by the input address. When either chip enable or output enable is inactive, or write enable is active, output drivers stay in high-impedance mode.

All chip inputs and outputs are TTL/LVTTL-compatible, and operation is from a single 5V supply (AS7C1024) or 3.3V supply (AS7C31024). The AS7C1024 and AS7C31024 are packaged in common industry standard packages.

Absolute maximum ratings

| Parameter | Symbol | Min | Max | Unit |
|------------------------------------|------------|------|------|------|
| Voltage on any pin relative to GND | V_I | -0.5 | +7.0 | V |
| Power dissipation | P_D | - | 1.0 | W |
| Storage temperature (plastic) | T_{stg} | -55 | +150 | °C |
| Temperature under bias | T_{bias} | -10 | +85 | °C |
| DC output current | I_{out} | - | 20 | mA |

Stresses greater than those listed under Absolute Maximum Ratings may cause permanent damage to the device. This is a stress rating only and functional operation of the device at these or any other conditions outside those indicated in the operational sections of this specification is not implied. Exposure to absolute maximum rating conditions for extended periods may affect reliability.

Truth table

| $\overline{CE1}$ | $CE2$ | \overline{WE} | \overline{OE} | Data | Mode |
|------------------|-------|-----------------|-----------------|-----------|----------------------------------|
| H | X | X | X | High Z | Standby (I_{SB} , I_{SB1}) |
| X | L | X | X | High Z | Standby (I_{SB} , I_{SB1}) |
| L | H | H | H | High Z | Output disable |
| L | H | H | L | D_{out} | Read |
| L | H | L | X | D_{in} | Write |

Key: X = Don't Care, L = LOW, H = HIGH

Recommended operating conditions

| Parameter | | Symbol | Min | Nominal | Max | Unit |
|----------------|-----------|----------|------|---------|----------------|------|
| Supply voltage | AS7C1024 | V_{CC} | 4.5 | 5.0 | 5.5 | V |
| | AS7C31024 | V_{CC} | 3.0 | 3.3 | 3.6 | V |
| | | GND | 0.0 | 0.0 | 0.0 | V |
| Input voltage | AS7C1024 | V_{IH} | 2.2 | - | $V_{CC} + 0.5$ | V |
| | AS7C31024 | V_{IH} | 2.0 | - | $V_{CC} + 0.5$ | V |
| | | V_{IL} | -0.5 | - | 0.8 | V |

$V_{IL, min} = -3.0V$ for pulse width less than $t_{RC}/2$.





DC operating characteristics ¹

| Parameter | Symbol | Test conditions | -10 | | -12 | | -15 | | -20 | | -25 | | Unit | | |
|--------------------------------|----------------------|--|-----------|-----|-----|-----|-----|-----|-----|-----|-----|-----|---------------|-----|----|
| | | | Min | Max | Min | Max | Min | Max | Min | Max | Min | Max | | | |
| Input leakage current | $ I_{LI} $ | $V_{CC} = \text{Max},$ $V_{in} = \text{GND to } V_{CC}$ | - | 1 | - | 1 | - | 1 | - | 1 | - | 1 | μA | | |
| Output leakage current | $ I_{LO} $ | $\overline{CE1} = V_{IH}$ or $CE2 = V_{IL},$ $V_{CC} = \text{Max},$ $V_{out} = \text{GND to } V_{CC}$ | - | 1 | - | 1 | - | 1 | - | 1 | - | 1 | μA | | |
| Operating power supply current | I_{CC} | $\overline{CE1} = V_{IL}, CE2 = V_{IH},$ $f = f_{max}, I_{out} = 0 \text{ mA}$ | AS7C1024 | | - | 140 | - | 130 | - | 120 | - | 110 | - | 100 | mA |
| | | | AS7C31024 | | - | - | - | 75 | - | 70 | - | 65 | - | 60 | mA |
| Standby power supply current | I_{SB} | $\overline{CE1} = V_{IH}$ or $CE2 = V_{IL},$ $f = f_{max}$ | AS7C1024 | | - | 55 | - | 50 | - | 40 | - | 40 | - | 35 | mA |
| | | $\overline{CE1} \geq V_{CC}-0.2\text{V}$ or $CE2 \leq 0.2\text{V},$ $V_{in} \leq 0.2\text{V}$ or $V_{in} \geq V_{CC}-0.2\text{V},$ $f = 0$ | AS7C31024 | | - | 10 | - | 10 | - | 10 | - | 10 | - | 10 | mA |
| Output voltage | V_{OL} V_{OH} | $I_{OL} = 8 \text{ mA}, V_{CC} = \text{Min}$ | AS7C1024 | | - | 0.4 | - | 0.4 | - | 0.4 | - | 0.4 | - | 0.4 | V |
| | | $I_{OH} = -4 \text{ mA}, V_{CC} = \text{Min}$ | AS7C31024 | | 2.4 | - | 2.4 | - | 2.4 | - | 2.4 | - | 2.4 | - | V |

Shaded areas contain advance information.

Capacitance ²

($f = 1 \text{ MHz}, T_a = \text{Room temperature}, V_{CC} = 5\text{V}$)

| Parameter | Symbol | Signals | Test conditions | Max | Unit |
|-------------------|-----------|---|--------------------------------|-----|------|
| Input capacitance | C_{IN} | A, $\overline{CE1}$, $CE2$, \overline{WE} , \overline{OE} | $V_{in} = 0\text{V}$ | 5 | pF |
| I/O capacitance | $C_{I/O}$ | I/O | $V_{in} = V_{out} = 0\text{V}$ | 7 | pF |

Read cycle ^{3,9,12}

| Parameter | Symbol | -10 | | -12 | | -15 | | -20 | | -25 | | Unit | Notes |
|---|------------|-----|-----|-----|-----|-----|-----|-----|-----|-----|-----|------|----------|
| | | Min | Max | Min | Max | Min | Max | Min | Max | Min | Max | | |
| Read cycle time | t_{RC} | 10 | - | 12 | - | 15 | - | 20 | - | 25 | - | ns | |
| Address access time | t_{AA} | - | 10 | - | 12 | - | 15 | - | 20 | - | 25 | ns | 3 |
| Chip enable ($\overline{CE1}$) access time | t_{ACE1} | - | 10 | - | 12 | - | 15 | - | 20 | - | 25 | ns | 3, 12 |
| Chip enable ($CE2$) access time | t_{ACE2} | - | 10 | - | 12 | - | 15 | - | 20 | - | 25 | ns | 3, 12 |
| Output enable (\overline{OE}) access time | t_{OE} | - | 3 | - | 3 | - | 4 | - | 5 | - | 6 | ns | |
| Output hold from address change | t_{OH} | 2 | - | 3 | - | 3 | - | 3 | - | 3 | - | ns | 5 |
| $\overline{CE1}$ LOW to output in Low Z | t_{CLZ1} | 3 | - | 3 | - | 3 | - | 3 | - | 3 | - | ns | 4, 5, 12 |
| $CE2$ HIGH to output in Low Z | t_{CLZ2} | 3 | - | 3 | - | 3 | - | 3 | - | 3 | - | ns | 4, 5, 12 |
| $\overline{CE1}$ HIGH to output in High Z | t_{CHZ1} | - | 3 | - | 3 | - | 4 | - | 5 | - | 6 | ns | 4, 5, 12 |
| $CE2$ LOW to output in High Z | t_{CHZ2} | - | 3 | - | 3 | - | 4 | - | 5 | - | 6 | ns | 4, 5, 12 |
| \overline{OE} LOW to output in Low Z | t_{OLZ} | 0 | - | 0 | - | 0 | - | 0 | - | 0 | - | ns | 4, 5 |
| \overline{OE} HIGH to output in High Z | t_{OHZ} | - | 3 | - | 3 | - | 4 | - | 5 | - | 6 | ns | 4, 5 |
| Power up time | t_{PU} | 0 | - | 0 | - | 0 | - | 0 | - | 0 | - | ns | 4, 5, 12 |
| Power down time | t_{PD} | - | 10 | - | 12 | - | 15 | - | 20 | - | 25 | ns | 4, 5, 12 |



Key to switching waveforms

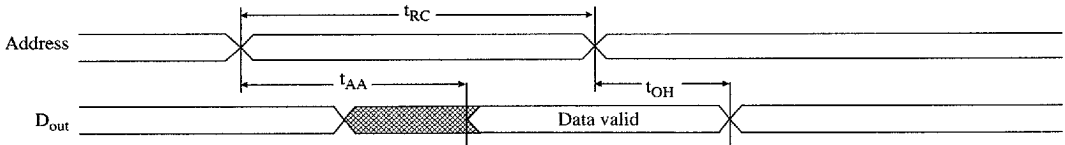
Rising input

Falling input

Undefined output/don't care

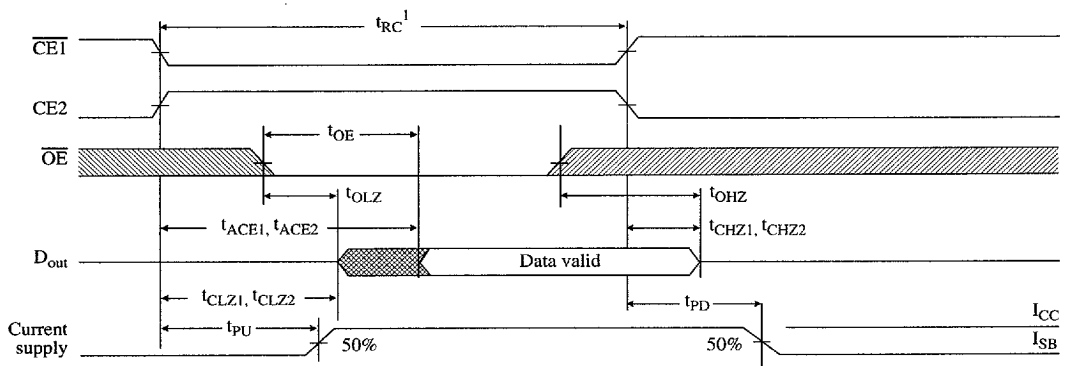
Read waveform 1 3,6,7,9,12

Address controlled



Read waveform 2 3,6,8,9,12

$\overline{CE1}$ and $CE2$ controlled



Write cycle 11, 12

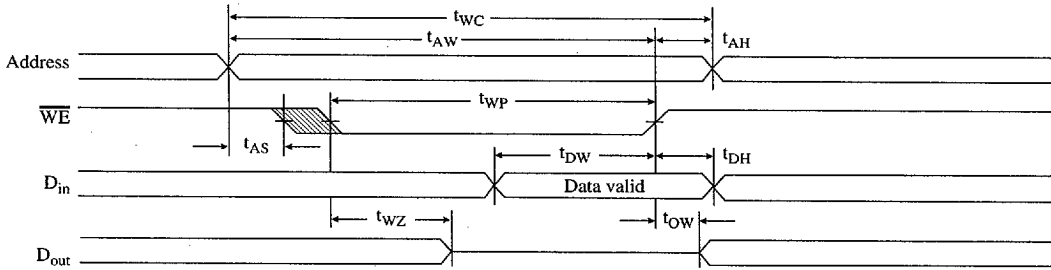
| Parameter | Symbol | -10 | | -12 | | -15 | | -20 | | -25 | | Unit | Notes |
|---|-----------|-----|-----|-----|-----|-----|-----|-----|-----|-----|-----|------|-------|
| | | Min | Max | Min | Max | Min | Max | Min | Max | Min | Max | | |
| Write cycle time | t_{WC} | 10 | 12 | 12 | 12 | 15 | — | 20 | — | 20 | — | ns | |
| Chip enable ($\overline{CE1}$) to write end | t_{CW1} | 9 | 10 | 10 | 10 | 12 | — | 12 | — | 15 | — | ns | 12 |
| Chip enable ($CE2$) to write end | t_{CW2} | 9 | 10 | 10 | 10 | 12 | — | 12 | — | 15 | — | ns | 12 |
| Address setup to write end | t_{AW} | 9 | 10 | 10 | 10 | 12 | — | 12 | — | 15 | — | ns | |
| Address setup time | t_{AS} | 0 | 0 | 0 | 0 | 0 | — | 0 | — | 0 | — | ns | 12 |
| Write pulse width | t_{WP} | 7 | 8 | 8 | 8 | 9 | — | 12 | — | 15 | — | ns | |
| Address hold from end of write | t_{AH} | 0 | 0 | 0 | 0 | 0 | — | 0 | — | 0 | — | ns | |
| Data valid to write end | t_{DW} | 6 | 6 | 6 | 6 | 9 | — | 10 | — | 10 | — | ns | |
| Data hold time | t_{DH} | 0 | 0 | 0 | 0 | 0 | — | 0 | — | 0 | — | ns | 4, 5 |
| Write enable to output in High Z | t_{WZ} | — | 5 | — | 5 | — | 5 | — | 5 | — | 5 | ns | 4, 5 |
| Output active from write end | t_{OW} | 3 | 3 | 3 | 3 | 3 | — | 3 | — | 3 | — | ns | 4, 5 |

Shaded areas contain advance information.



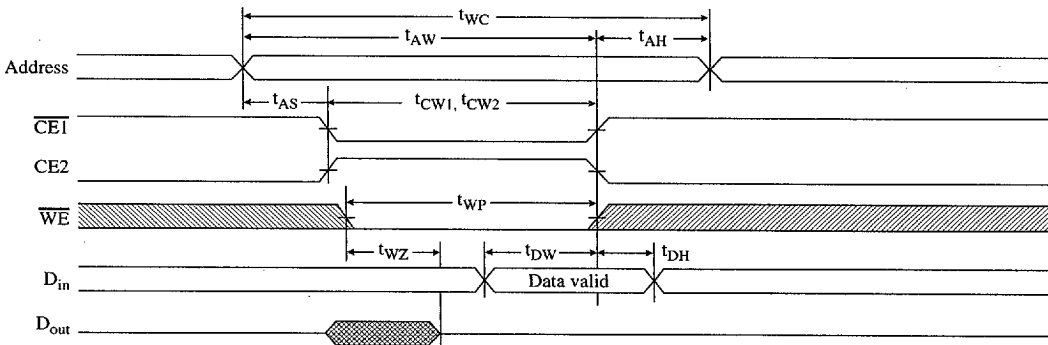
Write waveform 1 ^{10,11,12}

\overline{WE} controlled



Write waveform 2 ^{10,11,12}

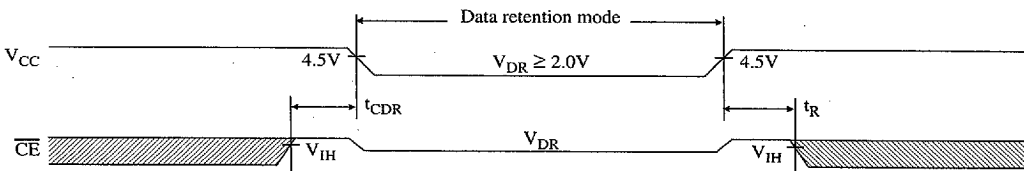
$\overline{CE1}$ and $CE2$ controlled



Data retention characteristics ¹³

| Parameter | Symbol | Test conditions | Min | Max | Unit |
|--------------------------------------|------------|---|----------|-----|---------|
| V_{CC} for data retention | V_{DR} | $V_{CC} = 2.0V$ | 2.0 | — | V |
| Data retention current | I_{CCDR} | $\overline{CE1} \geq V_{CC} - 0.2V$ or $CE2 \leq 0.2V$ | — | 500 | μA |
| Chip deselect to data retention time | t_{CDR} | | 0 | — | ns |
| Operation recovery time | t_R | $V_{in} \geq V_{CC} - 0.2V$ or $V_{in} \leq 0.2V$ | t_{RC} | — | ns |
| Input leakage current | $ I_{LI} $ | | — | 1 | μA |

Data retention waveform





AC test conditions

- 5V output load: see Figure B, except as noted see Figure C.
- 3.3V output load: see Figure D, except as noted see Figure E.
- Input pulse level: GND to 3.0V. See Figure A.
- Input rise and fall times: 5 ns. See Figure A.
- Input and output timing reference levels: 1.5V.

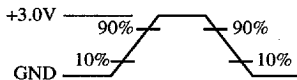


Figure A: Input waveform

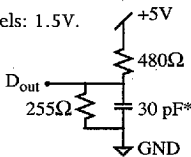
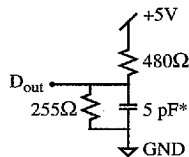
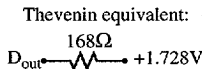


Figure B: Output load



*including scope and jig capacitance

Figure C: Output load for t_{CLZ} , t_{CHZ} , t_{OLZ} , t_{OHZ} , t_{OW}

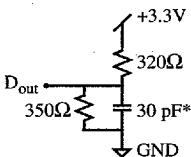
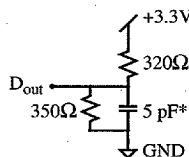


Figure D: Output load



*including scope and jig capacitance

Figure C: Output load for t_{CLZ} , t_{CHZ} , t_{OLZ} , t_{OHZ} , t_{OW}

Notes

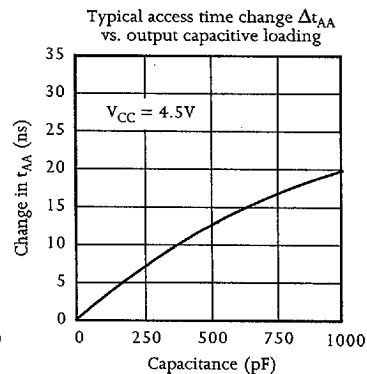
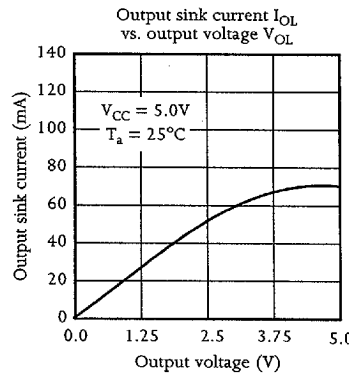
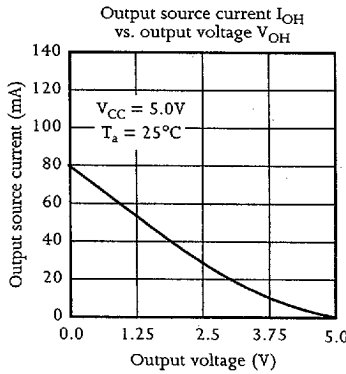
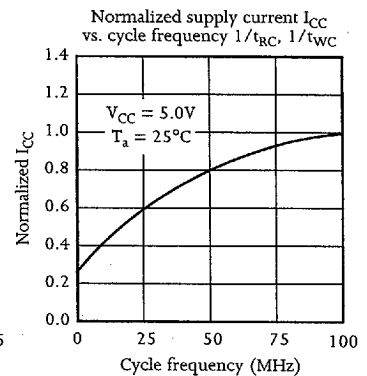
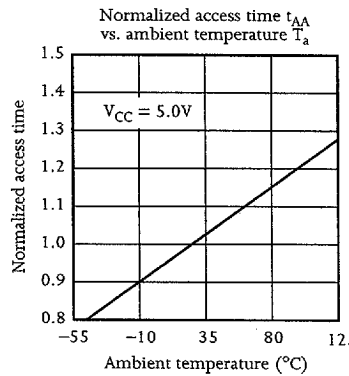
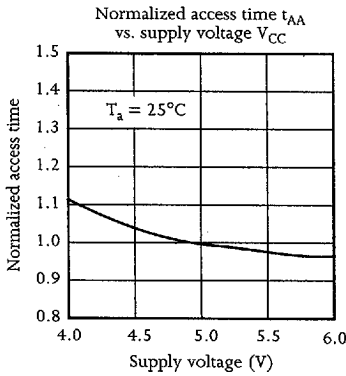
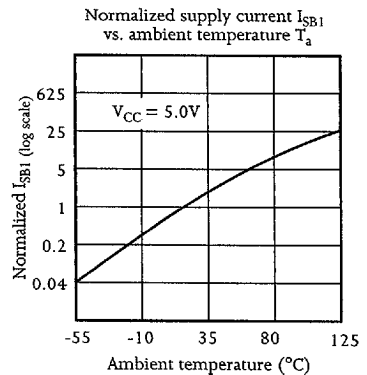
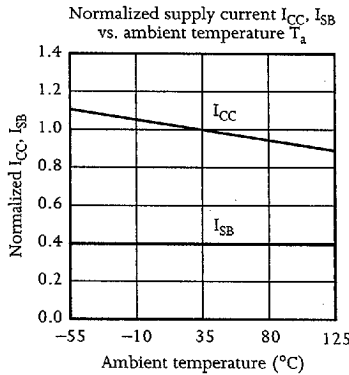
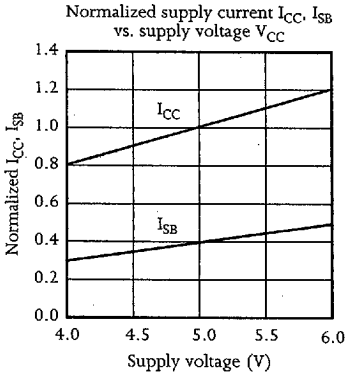
- 1 During V_{CC} power-up, a pull-up resistor to V_{CC} on $\overline{CE1}$ is required to meet I_{SB} specification.
- 2 This parameter is sampled and not 100% tested.
- 3 For test conditions, see AC Test Conditions, Figures A, B, C.
- 4 t_{CLZ} and t_{CHZ} are specified with $CL = 5\text{pF}$ as in Figure C. Transition is measured $\pm 500\text{mV}$ from steady-state voltage.
- 5 This parameter is guaranteed but not tested.
- 6 \overline{WE} is HIGH for read cycle.
- 7 $\overline{CE1}$ and \overline{OE} are LOW and $\overline{CE2}$ is HIGH for read cycle.
- 8 Address valid prior to or coincident with \overline{CE} transition LOW.
- 9 All read cycle timings are referenced from the last valid address to the first transitioning address.
- 10 $\overline{CE1}$ or \overline{WE} must be HIGH or $\overline{CE2}$ LOW during address transitions.
- 11 All write cycle timings are referenced from the last valid address to the first transitioning address.
- 12 $\overline{CE1}$ and $\overline{CE2}$ have identical timing.
- 13 This data applicable to the AS7C1024. The AS7C31024 functions similarly.

SRAM



Typical DC and AC characteristics

SRAM



9003449 0000829 766

AS7C1024
AS7C31024



AS7C1024 ordering codes

| Package \ Access time | 10 ns | 12 ns | 15 ns | 20 ns | 25 ns |
|-----------------------|-----------------|-----------------|-----------------|-----------------|-----------------|
| Plastic DIP, 300 mil | AS7C1024-10TPC | AS7C1024-12TPC | AS7C1024-15TPC | AS7C1024-20TPC | AS7C1024-25TPC |
| | AS7C31024-10TPC | AS7C31024-12TPC | AS7C31024-15TPC | AS7C31024-20TPC | AS7C31024-25TPC |
| Plastic DIP, 400 mil | AS7C1024-10PC | AS7C1024-12PC | AS7C1024-15PC | AS7C1024-20PC | AS7C1024-25PC |
| | AS7C31024-10PC | AS7C31024-12PC | AS7C31024-15PC | AS7C31024-20PC | AS7C31024-25PC |
| Plastic SOJ, 300 mil | AS7C1024-10TJC | AS7C1024-12TJC | AS7C1024-15TJC | AS7C1024-20TJC | AS7C1024-25TJC |
| | AS7C31024-10TJC | AS7C31024-12TJC | AS7C31024-15TJC | AS7C31024-20TJC | AS7C31024-25TJC |
| Plastic SOJ, 400 mil | AS7C1024-10JC | AS7C1024-12JC | AS7C1024-15JC | AS7C1024-20JC | AS7C1024-25JC |
| | AS7C31024-10JC | AS7C31024-12JC | AS7C31024-15JC | AS7C31024-20JC | AS7C31024-25JC |
| TSOP 8x20 | AS7C1024-10TC | AS7C1024-12TC | AS7C1024-15TC | AS7C1024-20TC | AS7C1024-25TC |
| | AS7C31024-10TC | AS7C31024-12TC | AS7C31024-15TC | AS7C31024-20TC | AS7C31024-25TC |

Shaded areas contain advance information.

AS7C1024 part numbering system

| AS7C | X | 1024 | -XX | X | C |
|-------------|----------------------------------|---------------|-------------|---|--|
| SRAM prefix | Blank = 5V CMOS 3 = 3.3V CMOS | Device number | Access time | Package: TP = PDIP 300 mil TJ = SOJ 300 mil T = TSOP 8x20 | P = PDIP 400 mil J = SOJ 400 mil Commercial temperature range, 0°C to 70 °C |