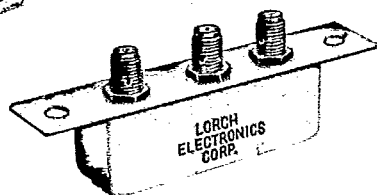


MINIATURE DOUBLE BALANCED MIXERS

FLATPACK AND CONNECTOR VERSIONS

10 to 4000 MHz

LO POWER +7dBm to +13dBm



FLATPACK VERSION	CONN. VERSION	FREQ. RANGE
FC-200ZF-15	FC-201ZF-15	10-1500 MHz
FC-200ZF-20	FC-201ZF-20	10-2000 MHz
FC-200ZF-21	FC-201ZF-21	700-2000 MHz
FC-200ZF-30	FC-201ZF-30	10-3000 MHz
FC-200ZF-40	FC-201ZF-40	10-4000 MHz

Models FC-200ZF-15, FC-200ZF-20, FC-200ZF-21, FC-200ZF-30 and FC-200ZF-40 are double balanced mixers of miniature flatpack construction, providing high performance in an extremely small package of only 0.150 inch profile, compatible with microstrip and critical PC board layouts. Subminiature chip quads of Schottky barrier diodes are used with miniature ferrite cores, achieving the resulting small size without compromise of electrical performance.

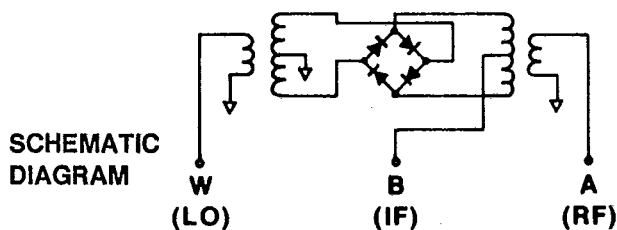
Models FC-201ZF-15, FC-201ZF-20, FC-201ZF-21, FC-201ZF-30 and FC-201ZF-40 are double balanced mixers in a miniature package with SMA connectors. They are intended for general purpose use over the frequency range from 10 to 4000 MHz. All flatpack units are hermetically sealed, and are leak tested prior to shipment.

PERFORMANCE DATA

FLATPACK VERSION		CONNECTOR VERSION		FULL FREQUENCY RANGE MHz		FREQ. RANGE MHz PORTS W AND A	CONV. LOSS (MAX.) dB (NOTE 5)	ISOLATION (MIN.) dB			LO POWER NOM. (NOTE 5)	1dB INPUT COMPRESSION LEVEL (NOTE 5)	3RD ORDER INTERCEPT POINT (NOTE 5)
MODEL	FIG. (NOTE 3)	MODEL	FIG. (NOTE 4)	PORTS W (LO) & A (RF)	PORT B (IF)			PORT W TO A	PORT W TO B	PORT A TO B			
FC-200ZF-15	9	FC-201ZF-15	12	10-1500	DC-1500	10-50	7.5	40	40	30	+7dBm	0dBm	+12dB
						50-500	7.5	30	25	20			
						500-1000	7.5	20	15	15			
						1000-1500	8.5	15	10	15			
FC-200ZF-20 (NOTE 2)	9	FC-201ZF-20 (NOTE 2)	12	10-2000	DC-2000	10-50	7.5	40	30	25	+10dBm	+3dBm	+15dBm
						50-500	7.5	35	25	25			
						500-1000	7.5	25	20	15			
						1000-2000	8.5	25	20	15			
FC-200ZF-21	9	FC-201ZF-21	12	700-2000	DC-300	700-1000	8.0	20	15	20	+10dBm	+3dBm	+15dBm
						1000-1500	8.0	30	15	20			
						1500-2000	8.0	30	15	25			
FC-200ZF-30 (NOTES 1&2)	9	FC-201ZF-30 (NOTES 1&2)	12	10-3000	DC-2000	10-500	8.0	25	20	20	+10dBm	+4dBm	+18dBm
						500-1000	8.0	30	25	25			
						1000-3000	8.0	25	25	18			
FC-200ZF-40 (NOTES 1&2)	9	FC-201ZF-40 (NOTES 1&2)	12	10-4000	DC-8000	10-1000	8.0	30	25	20	+13dBm	+7dBm	+18dBm
						1000-2500	8.5	25	20	20			
						2500-4000	9.5	25	20	20			

NOTES:

- For IF frequencies above 2000 MHz (up-conversion), interchange Ports A and B.
- Conversion loss for IF frequencies below 10 MHz gradually increases as the IF approaches DC. At DC the conversion loss is 4 dB higher than at 10 MHz.
- The figure shown is the standard case style, an alternate case style, available on request, is Fig. 8. To specify this style, add -8 to the model designation (e.g., FC-200ZF-40-8).
- The figure shown is the standard case style. An alternate case style, available on request, is Fig. 15. To specify this style, add -15 to the model designation (e.g., FC-200ZF-30-15).
- See "Performance Notes".



LORCH ELECTRONICS

VERNITRON CORPORATION

2801 72nd Street No., St. Petersburg, FL 33710
 FAX: (813) 347-3881 (813) 347-2181