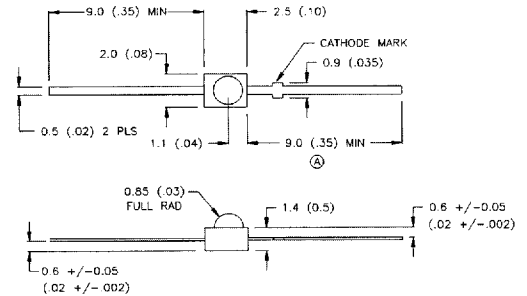


SSL-LXA223 SERIES T-2mm AXIAL LEADED LED LAMP

FEATURES			APPLICATIONS			OPTIONS AVAILABLE		
<ul style="list-style-type: none"> • Axial Lead Package • Intense Light Spot • Wide Viewing Angle • Short Lens Profile 			<ul style="list-style-type: none"> • Switches, Keypads • Indicators • Fault Indicators 					
LUMEX PART NBR	EMITTED COLOR		EPOXY LENS COLOR	BRIGHTNESS		VIEW ANGLE	VI@20mA	
	PEAK(nm)	LENS COLOR		TYP.(mcd.)	I(mA)		TYP.	MAX
SSL-LXA223ID	RED	635	RED DIFF.	8	20	120	2.1	2.8
SSL-LXA223SRD	RED	660	RED DIFF.	15	20	120	1.7	2.2
SSL-LXA223GD	GREEN	565	GREEN DIFF.	8	20	120	2.1	2.8
SSL-LXA223YD	YELLOW	585	YELLOW DIFF.	6	20	120	2.1	2.8
WATER CLEAR LENS OPTIONS								
SSL-LXA223IC	RED	635	WATER CLEAR	12	20	100	2.1	2.8
SSL-LXA223GC	GREEN	565	WATER CLEAR	20	20	100	2.1	2.8
SSL-LXA223YC	YELLOW	585	WATER CLEAR	8	20	100	2.1	2.8

See pages 8 -14 for Max. operating limits and operating curves

DIMENSIONS (mm/inch) ±.2mm

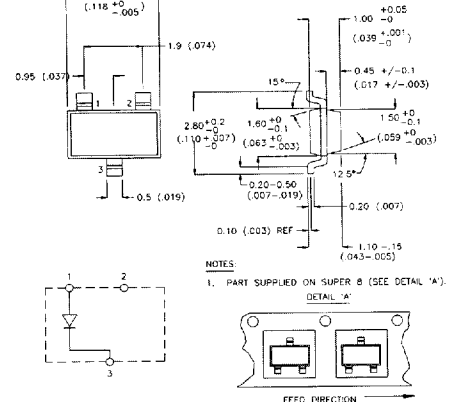


SSL-LX15XX SERIES (SOT-23) SURFACE MOUNT LED LAMPS

FEATURES			APPLICATIONS			OPTIONS AVAILABLE		
<ul style="list-style-type: none"> • Surface Mount Package • Front/Rear P.C. Mounting • Bi-Color or Dual Chip Options 			<ul style="list-style-type: none"> • Key Boards, Switches • Illuminators • Fault Indicators 			<ul style="list-style-type: none"> • Custom Packaging • Sorted Colors 		
LUMEX PART NBR	EMITTED COLOR		EPOXY LENS COLOR	BRIGHTNESS		VIEW ANGLE	VI@20mA	
	PEAK(nm)	LENS COLOR		TYP.(mcd.)	I(mA)		TYP.	MAX
SSL-LX151C-RP	RED	635	WATER CLEAR	4	20	140	2.1	2.8
SSL-LX15GC-RP	GREEN	565	WATER CLEAR	4	20	140	2.1	2.8
SSL-LX15YC-RP	YELLOW	585	WATER CLEAR	4	20	140	2.1	2.8
DUAL CHIP OPTIONS								
SSL-LX151C-RP	RED/RED	635/635	WATER CLEAR	8	40	140	2.1	2.8
SSL-LX15GC-RP	GREEN/GREEN	565/565	WATER CLEAR	8	40	140	2.1	2.8
SSL-LX15YC-RP	YLW/YLW	585/585	WATER CLEAR	8	40	140	2.1	2.8
DUAL COLOR OPTIONS								
SSL-LX151GC-RP	RED/GREEN	635/565	WATER CLEAR	4/4	20/20	140	2.1	2.8

See pages 8 -14 for Max. operating limits and operating curves

DIMENSIONS (mm/inch) ±.2mm



SSL-LX3052XX, SSL-LX5091XX LOW COST LED LAMPS

FEATURES			APPLICATIONS			OPTIONS AVAILABLE		
<ul style="list-style-type: none"> • Low Cost Units • Three Color Choices • P.C. or Pannel Use 			<ul style="list-style-type: none"> • Indicators • Toys and Games • Novelties 			<ul style="list-style-type: none"> • Add-on Leads • Panel Clips • Color Brightness Sorting • Add-on Spacers 		
LUMEX PART NBR	EMITTED COLOR		EPOXY LENS COLOR	BRIGHTNESS		VIEW ANGLE	VI@20mA	
	PEAK(nm)	LENS COLOR		TYP.(mcd.)	I(mA)		TYP.	MAX
SSL-LX3052RD	RED	655	RED DIFF.	2.0	20	70	1.7	2.1
SSL-LX3052GD	GREEN	565	GREEN DIFF.	4.0	20	70	2.1	2.8
SSL-LX3052YD	YELLOW	585	YELLOW DIFF.	3.0	20	70	2.1	2.8
SSL-LX3052OD	ORANGE	625	ORANGE DIFF.	5.0	20	70	2.0	2.7
SSL-LX5091RD	RED	655	RED DIFF.	2.0	20	80	1.7	2.1
SSL-LX5091GD	GREEN	565	GREEN DIFF.	4.0	20	80	2.1	2.8
SSL-LX5091YD	YELLOW	585	YELLOW DIFF.	3.0	20	80	2.1	2.8
SSL-LX5091OD	ORANGE	655	ORANGE DIFF.	5.0	20	80	2.0	2.7

See pages 8 -14 for Max. operating limits and operating curve

DIMENSIONS (mm/inch) ±.2mm

