



TAI-SAW TECHNOLOGY CO., LTD.

No. 3, Industrial 2nd Rd., Ping-Chen Industrial District,
Taoyuan, 324, Taiwan, R.O.C.

TEL: 886-3-4690038 FAX: 886-3-4697532

E-mail: tstsales@mail.taisaw.com Web: www.taisaw.com

Approval Sheet For Product Specification

Issued Date:

Product Name: SAW Resonator 433.816 MHz SMD 3X3 mm

TST Parts No.: TC0330A

Customer Parts No.: _____

Company: _____
Division: _____
Approved by : _____
Date: _____

Checked by: Asin Lin

Approval by: Francis Chen

Date: 2006/11/03



TAI-SAW TECHNOLOGY CO., LTD.

No. 3, Industrial 2nd Rd., Ping-Chen Industrial District,
Taoyuan, 324, Taiwan, R.O.C.

TEL: 886-3-4690038 FAX: 886-3-4697532

E-mail: tstsales@mail.taisaw.com Web: www.taisaw.com

SAW Resonator 433.766 MHz

MODEL NO.: TC0330A

REV. NO.:2

RoHS Compliant
Lead free
Lead-free soldering

A. FEATURES:

1. 1-Port Resonator.

B. MAXIMUM RATING:

1. Input Power Level: 0 dBm
2. DC voltage: 12 V
3. Operating Temperature: -40°C to +85°C
4. Storage Temperature: -40°C to +85°C

C. ELECTRICAL CHARACTERISTICS:

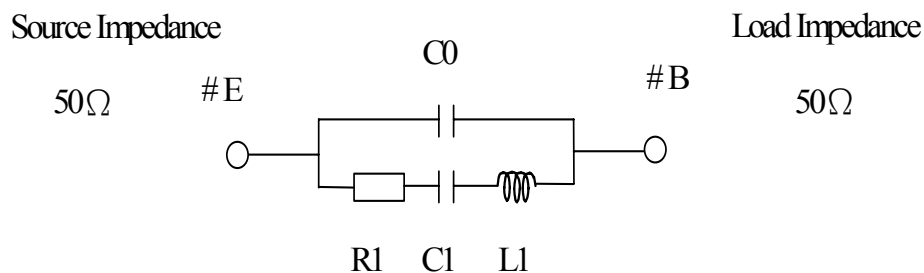
Reference Temperature $T_A=25^\circ\text{C}$

Characteristic	Units	Minimum	Typical	Maximum
Center frequency F_c	MHz	433.741	433.816	4433.891
Insertion Loss IL	dB	-	0.9	2.0
Unload quality factor Q_U		6000	8000	-
Ageing of fc	ppm/yr	-	-	±10
Motional capacitance C1	fF	-	3.50	-
Motional inductance L1	μH	-	38.4	-
Motional resistance R1	Ohm	-	12.59	-
Parallel capacitance C_o	pF	-	4.72	-
Frequency Temperature coefficient (TC_f)	ppm/c*2	-	0.032	-
Turnover To	deg.C	-	25	-
Package size		SMD 3X3X1.1 mm		

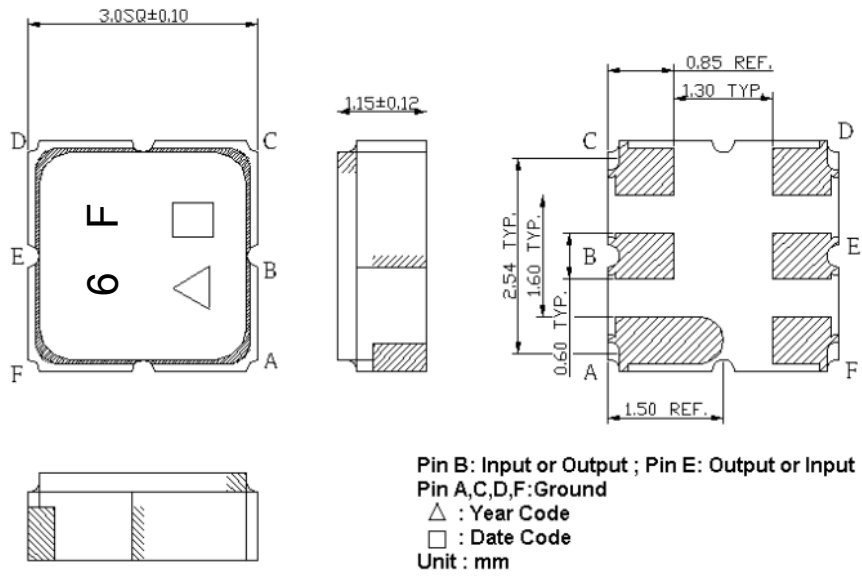
Temperature dependence of fc: $f_c(T_A)=f_c(T_O)(1+TC_f(T_A-T_O)^2)$

D. EQUIVIRENT CIRCUIT:

One-Port Resonator:



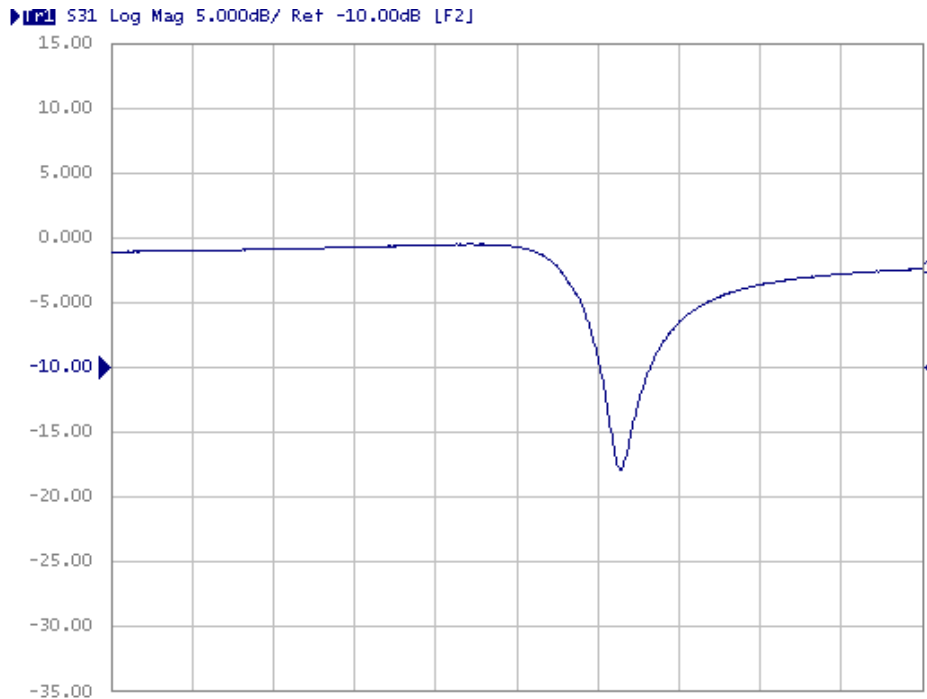
E. OUTLINE DRAWING:



Date code: Provided by planer each year

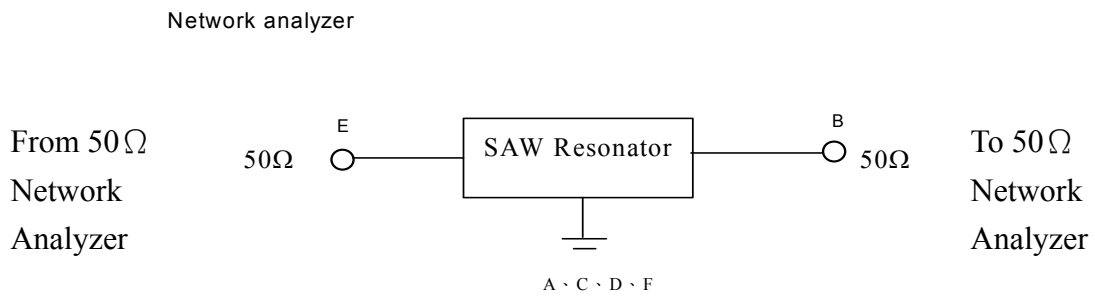
Year code: 6 for 2006,7 for 2007,...

F. FREQUENCY CHARACTERISTICS:

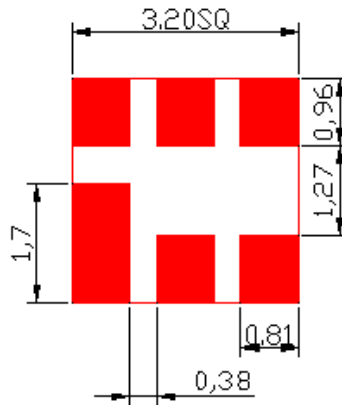


Center Frequency 433.816MHz Span 2MHz

G. TEST CIRCUIT:

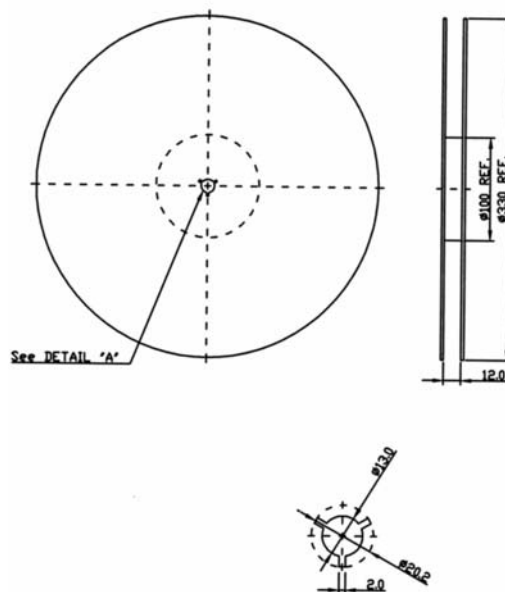


H. PCB Foot Print:

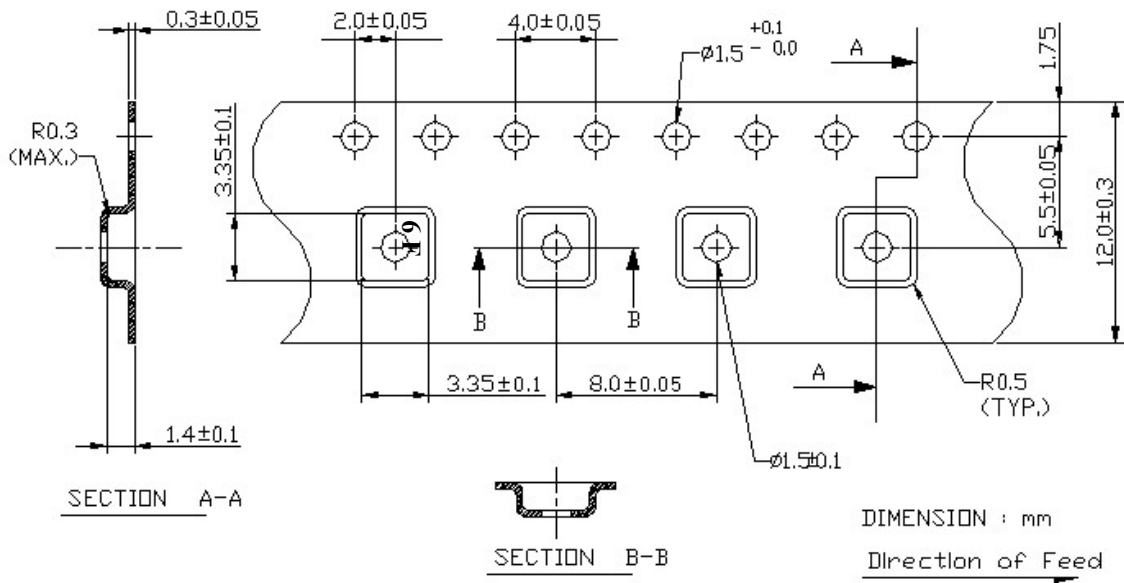


I. PACKING:

1. REEL DIMENSION



2.TAPE DIMENSION



H.RECOMMENDED REFLOW PROFILE:

