

PLEASE CHECK WWW.MOLEX.COM FOR LATEST PART INFORMATION

Part Number: [0482111201](#)
Status: **Active**
Description: 0.80mm (.031") Pitch MDC Board-to-Board Receptacle, Surface Mount, Vertical, 4.20mm (.165") Mated Height, 12 Circuits, Lead Free

Documents:

[3D Model](#) [Product Specification PS-48126-001 \(PDF\)](#)
[Drawing \(PDF\)](#) [RoHS Certificate of Compliance \(PDF\)](#)

General

Product Family PCB Receptacles
 Series [48211](#)
 Application Board-to-Board
 Product Name MDC

Physical

Circuits (Loaded) 12
 Durability (mating cycles max) 50
 Glow-Wire Compliant No
 Lock to Mating Part Yes
 Material - Metal Copper
 Material - Plating Mating Tin
 Material - Plating Termination Tin
 Number of Rows 2
 Orientation Vertical
 PCB Locator Yes
 PCB Retention Yes
 Packaging Type Embossed Tape on Reel
 Pitch - Mating Interface (in) 0.031 In
 Pitch - Mating Interface (mm) 0.80 mm
 Polarized to Mating Part Yes
 Polarized to PCB No
 Surface Mount Compatible (SMC) N/A
 Temperature Range - Operating -40°C to +85°C
 Termination Interface: Style Surface Mount

Electrical

Current - Maximum per Contact 0.5A
 Voltage - Maximum 50V DC

Solder Process Data

Lead-free Process Capability Reflow Capable (SMT only)
 Process Temperature max. C 260

Material Info

Reference - Drawing Numbers

Packaging Specification PK-48211-001
 Product Specification PS-48126-001
 Sales Drawing SD-48211-001
 Test Summary TS-48210-001

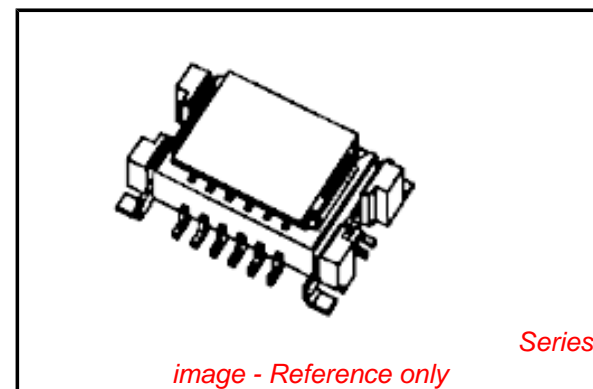


image - Reference only

EU RoHS

**ELV and RoHS
 Compliant**
**REACH SVHC
 Contains SVHC: No**
**Halogen-Free
 Status**

China RoHS



**Need more information on product
 environmental compliance?**

Email productcompliance@molex.com
 For a multiple part number RoHS Certificate of Compliance, [click here](#)

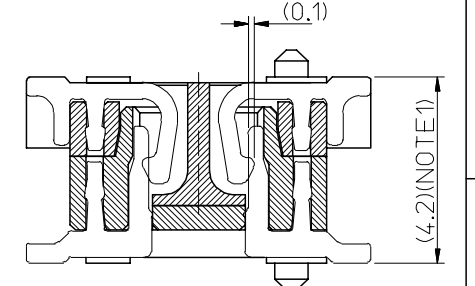
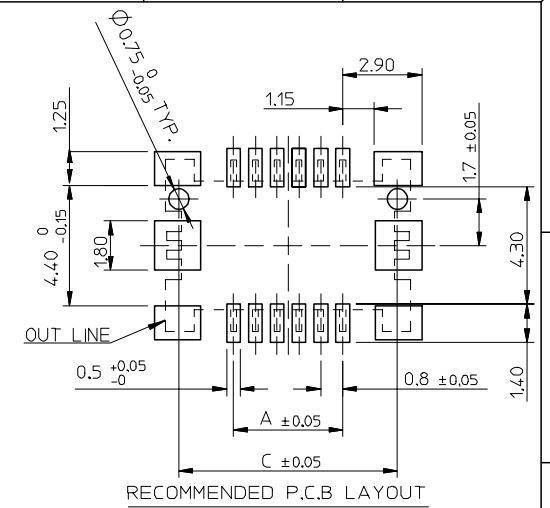
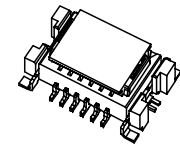
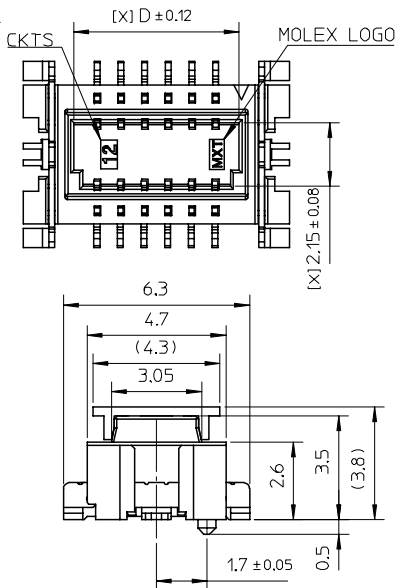
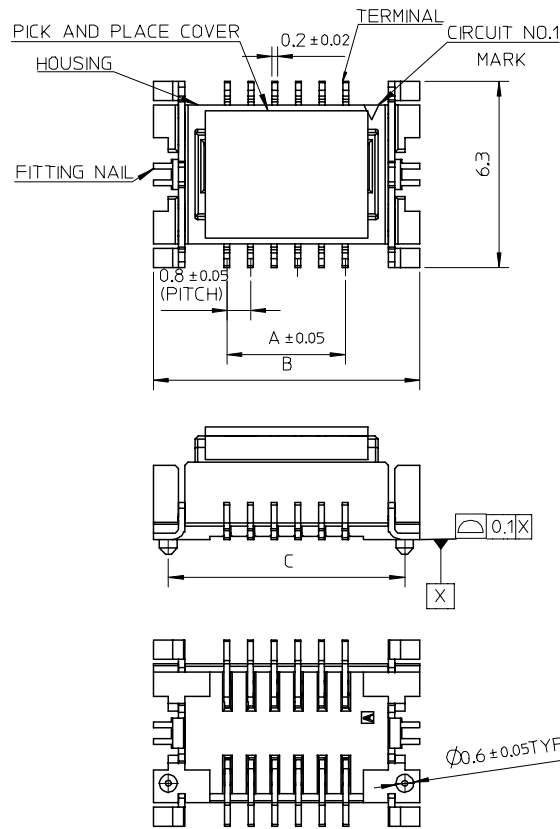
Please visit the [Contact Us](#) section for any non-product compliance questions.

Search Parts in this Series

[48211Series](#)

Mates With

[48126](#)



DIMA	DIMB	DIMC	DIMD	CKT	Available
3.2	8.2	7.2	4.8	10	-
4.0	9.0	8.0	5.6	12	YES
4.8	9.8	8.8	6.4	14	-
5.6	10.6	9.6	7.2	16	-
7.2	12.2	11.2	8.8	20	-
8.8	13.8	12.8	10.4	24	-
11.2	16.2	15.2	12.8	30	YES

NOTES
 1.COPLANARITY IS 0.1MM MAX.
 2.MATERIAL : HOUSING-HIGH TEMPERATURE THERMOPLASTIC, GLASS FILLED, UL 94V-0, COLOR: NATURE(WHITE)
 TERMINAL - COPPER ALLOY.
 FITTING NAIL- COPPER ALLOY
 PICK AND PLACE COVER-HIGH TEMPERATURE THERMOPLASTIC, GLASS FILLED,UL 94V-0, COLOR: NATURE(WHITE)
 3.FINISHES : TERMINAL : 48211-XX01:
 TIN MATT PLATED OVER ALL
 THICKNESS :0.025 MICROMETER
 NICKEL UNDERPLATED OVER ALL,
 THICKNESS :1.27 MICROMETER
 48211-XX11:
 GOLD FLASH OVER ALL
 THICKNESS : 0.025 MICROMETER MINIMUM,
 NICKEL UNDERPLATED OVER ALL
 THICKNESS : 1.27 MICROMETER MINIMUM,
 FITTING NAIL :48211-XX01:
 TIN MATT PLATED OVER ALL
 THICKNESS :0.025 MICROMETER
 NICKEL UNDERPLATED OVER ALL,
 THICKNESS :1.27 MICROMETER
 48211-XX11:
 GOLD FLASH OVER ALL
 THICKNESS : 0.025 MICROMETER MINIMUM,
 NICKEL UNDERPLATED OVERALL
 THICKNESS : 1.27 MICROMETER MINIMUM,

4.PRODUCT SPECIFICATION REFER TO PS-48126-001
 5.DRAWING PACKAGING REFER TO PK-48211-001
 6.TEST SUMMARY REFER TO TS-48210-001
 7.MATED WITH 48126-SERIES
 8.P/N LEGEND 48211-XXX1
 NO OF CKTS | PLATING
 0:MATT TIN
 1:GOLD FLASH OVER ALL
 9.LEAD-FREE AND ROHS COMPLIANCE

RELEASED EC NO: SH2005-0248 DR:WNEKA001 2005/11/03 CHKD: 2005/11/03 APPR:WISCHANG 2005/11/04	QUALITY SYMBOLS ▽=0 ▽=0	GENERAL TOLERANCES (UNLESS SPECIFIED)		DIMENSION STYLE MM ONLY		SCALE 6:1	DESIGN UNITS INCH	THIRD ANGLE PROJECTION	
				DRAWN BY DATE BERNIE 2005/02/02		TITLE MDC 0.8 MM BTB RECEPTACLE CONNECTOR (LEAD-FREE VERSION)			
				CHECKED BY DATE ERIC 2005/02/02		MOLEX MOLEX INCORPORATED			
				APPROVED BY DATE WILSON 2005/02/02		MATERIAL NO.		DOCUMENT NO. SD-48211-001	
		DRAFT WHERE APPLICABLE MUST REMAIN WITHIN DIMENSIONS		SEE NOTES		THIS DRAWING CONTAINS INFORMATION THAT IS PROPRIETARY TO MOLEX INCORPORATED AND SHOULD NOT BE USED WITHOUT WRITTEN PERMISSION			