

PC Card Connectors CIM-A24, CKM-A25 Series

FEATURES

CIM-A24 series is designed as a 1.27mm density 68pins connector plug surface-mounting (SMD) eject device type conforming to the PC card guide line specified in JEIDA (Japan Electronic Industry Development Association) standard, Ver. 4.1. This series is applicable to JEIDA standard type I, II, III and PCMCIA standard type I, II, III PC cards.



HOW TO ORDER

1. CIM-A24 Series (Connector)

A24-68-92-1 3 5 P
 1 2 3 4 5 6 7

- 1 Series No.
- 2 No. of contacts (68 : 68pins)
- 3 Housing material (92 : PPS resin)
- 4 Running No. assigned by us
- 5 Contact style (3 : Angle)
- 6 Contact finish (contact area) (5 : 0.3µm min.)
- 7 Plug or Socket (P : Plug)

2. CKM-A25 Series (Ejection)

A25-68-32 P
 1 2 3 4

- 1 Series No.
- 2 No. of contacts (68 : 68pins)
- 3 Housing material (32 : PBT resin)
- 4 Plug or Socket (P : Plug)
- 4 Running No. assigned by us (None : Button length 15mm, 2 : Button length 20mm)

SPECIFICATIONS

ELECTRICAL CHARACTERISTICS

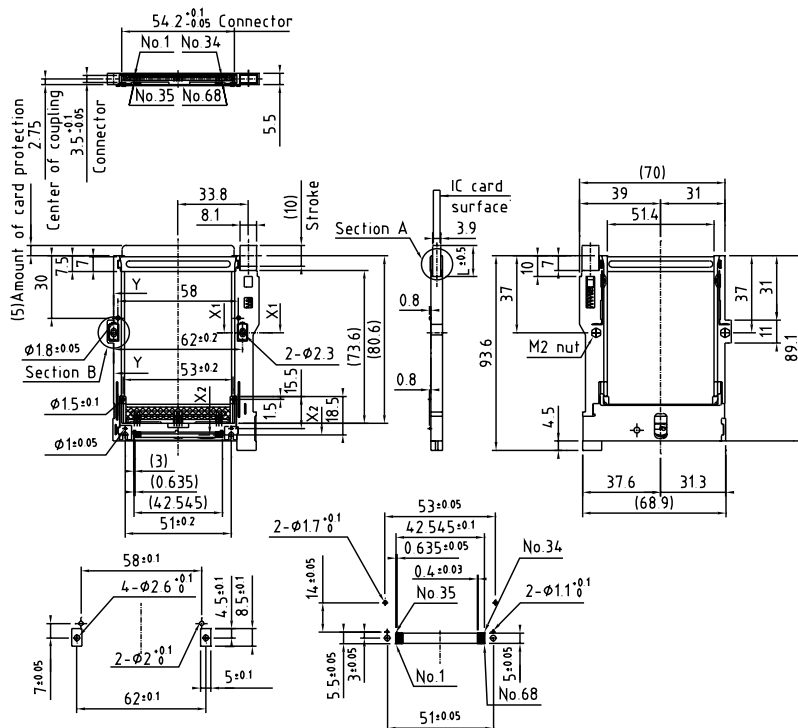
Current Capacity	0.5A Per contact
Withstanding Voltage	500V AC (rms) 1minute
Insulation Resistance	1,000MΩ min.
Contact Resistance	40mΩ max.

MATERIAL & FINISH

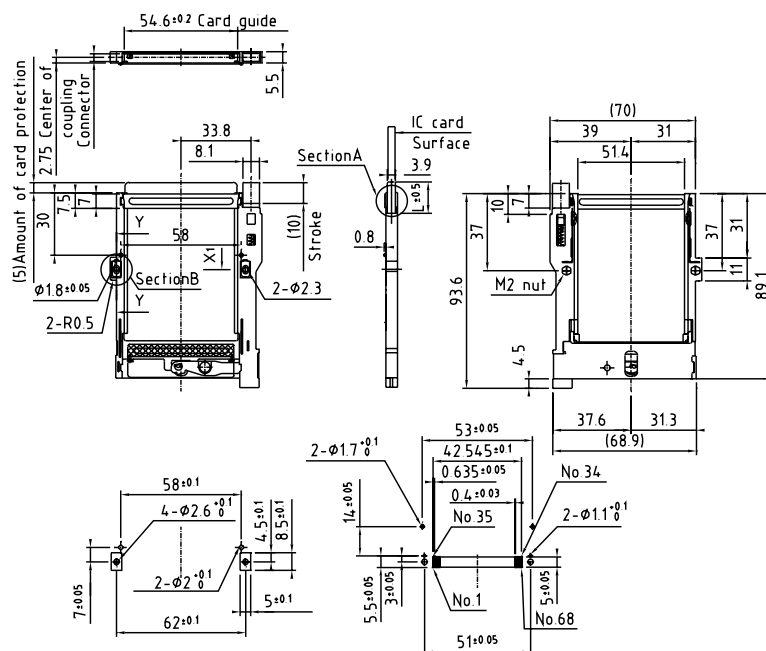
Component Parts	Material	Finish
Housing	PPS resin	—
Contact	Copper Alloy	Gold selective plating
Card Holder	PBT resin	—
Eject Button	PBT resin	—
Earth Pin	Copper Alloy	Tin reflow plating
Eject Part Structure	Stainless	—

DIMENSIONS

CIM-A24 Series



CKM-A25 Series



Unit : mm