



# SAW Components

Data Sheet G 1962 M





<b>SAW Components</b>	<b>G 1962 M</b>
<b>IF Filter for Intercarrier Applications</b>	<b>38,90 MHz</b>

**Data Sheet**

**Standard**

- B/G

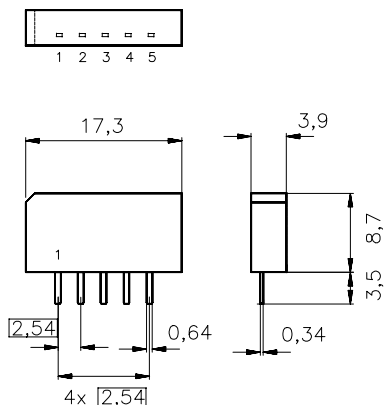
Plastic package **SIP5K**

**Features**

- TV IF filter with Nyquist slope and sound shelf
- Reduced group delay predistortion as compared with standard B/G, half
- Suitable for CENELEC EN 55020

**Terminals**

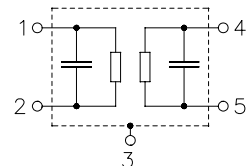
- Tinned CuFe alloy



Dimensions in mm, approx. weight 1,0 g

**Pin configuration**

- |   |                       |
|---|-----------------------|
| 1 | Input                 |
| 2 | Input - ground        |
| 3 | Chip carrier - ground |
| 4 | Output                |
| 5 | Output                |



Type	Ordering code	Marking and package according to	Packing according to
G 1962 M	B39389-G1962-M100	C61157-A1-A15	F61074-V8067-Z000

**Maximum ratings**

Operable temperature range	$T_A$	-25/+65	°C	
Storage temperature range	$T_{stg}$	-40/+85	°C	
DC voltage	$V_{DC}$	5	V	between any terminals
AC voltage	$V_{pp}$	10	V	between any terminals



## SAW Components

G 1962 M

## IF Filter for Intercarrier Applications

38,90 MHz

## Data Sheet

## Characteristics

Reference temperature:	$T_A = 25\text{ °C}$
Terminating source impedance:	$Z_S = 50\ \Omega$
Terminating load impedance:	$Z_L = 2\text{ k}\Omega \parallel 3\text{ pF}$

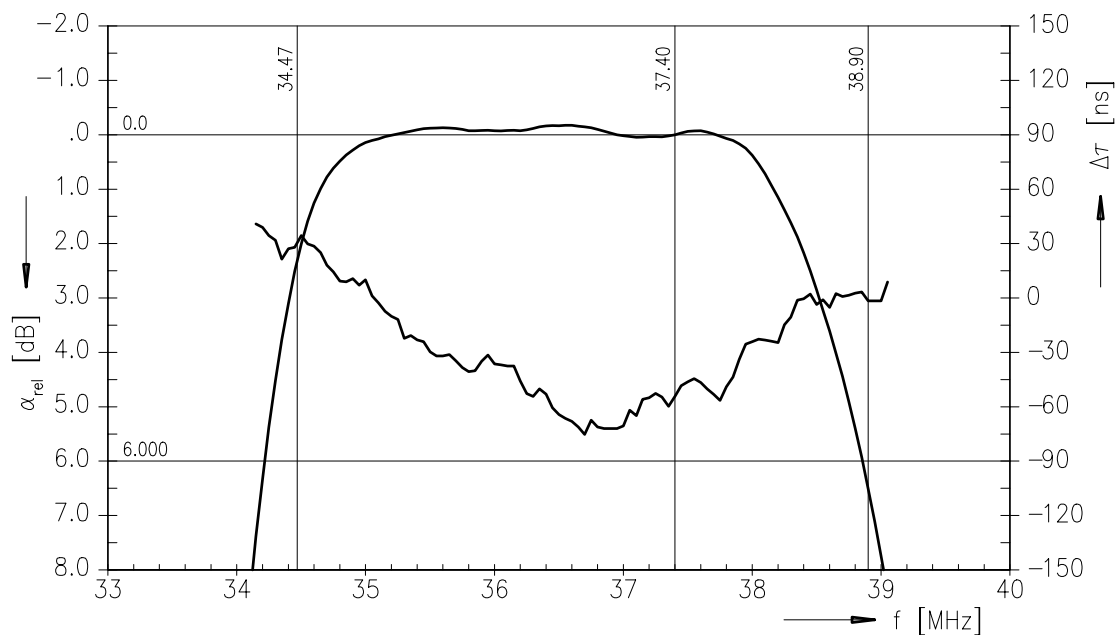
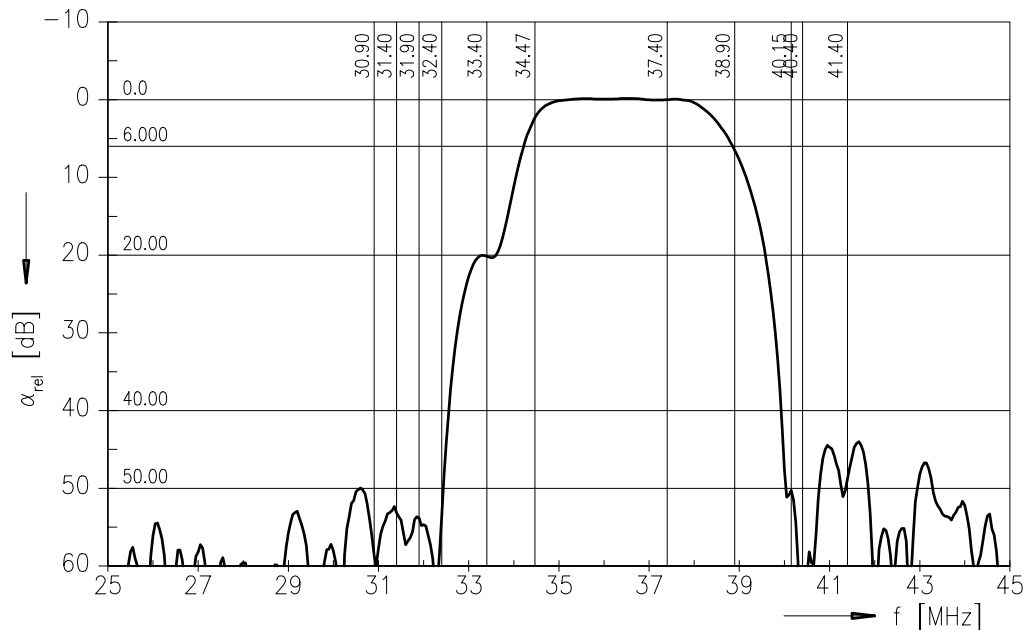
		min.	typ.	max.	
<b>Insertion attenuation</b>					
	$\alpha$				
Reference level for the following data	37,40 MHz	13,6	15,1	16,6	dB
<b>Relative attenuation</b>					
	$\alpha_{rel}$				
Picture carrier	38,90 MHz	4,9	5,9	6,9	dB
Color carrier	34,47 MHz	1,3	2,3	3,3	dB
Sound carrier	33,40 MHz	18,9	19,9	20,9	dB
Adjacent picture carrier UHF	30,90 MHz	46,0	52,0	—	dB
VHF	31,90 MHz	48,0	54,0	—	dB
	31,40 MHz	46,0	52,0	—	dB
	32,40 MHz	48,0	56,0	—	dB
	40,15 MHz	42,0	49,0	—	dB
Adjacent sound carrier VHF	40,40 MHz	46,0	58,0	—	dB
UHF	41,40 MHz	42,0	52,0	—	dB
Lower sidelobe	25,00 ... 31,40 MHz	42,0	47,0	—	dB
Upper sidelobe	40,40 ... 45,00 MHz	38,0	43,0	—	dB
<b>Reflected wave signal suppression</b>					
1,3 $\mu$ s ... 6,0 $\mu$ s after main pulse (test pulse 250 ns, carrier frequency 37,40 MHz)		44,0	54,0	—	dB
<b>Feedthrough signal suppression</b>					
1,3 $\mu$ s ... 1,2 $\mu$ s before main pulse (test pulse 250 ns, carrier frequency 37,40 MHz)		50,0	56,0	—	dB
<b>Group delay predistortion</b>					
(reference frequency 38,90 MHz)					
	$\Delta\tau$				
	36,90 MHz	—	-70	—	ns
	34,47 MHz	—	30	—	ns
<b>Impedance at 37,40 MHz</b>					
Input:	$Z_{IN} = R_{IN} \parallel C_{IN}$	—	2,2 $\parallel$ 13,3	—	k $\Omega$ $\parallel$ pF
Output:	$Z_{OUT} = R_{OUT} \parallel C_{OUT}$	—	1,4 $\parallel$ 4,7	—	k $\Omega$ $\parallel$ pF
<b>Temperature coefficient of frequency</b>					
	$TC_f$	—	-72	—	ppm/K



**SAW Components** **G 1962 M**  
**IF Filter for Intercarrier Applications** **38,90 MHz**

**Data Sheet**

**Frequency response**

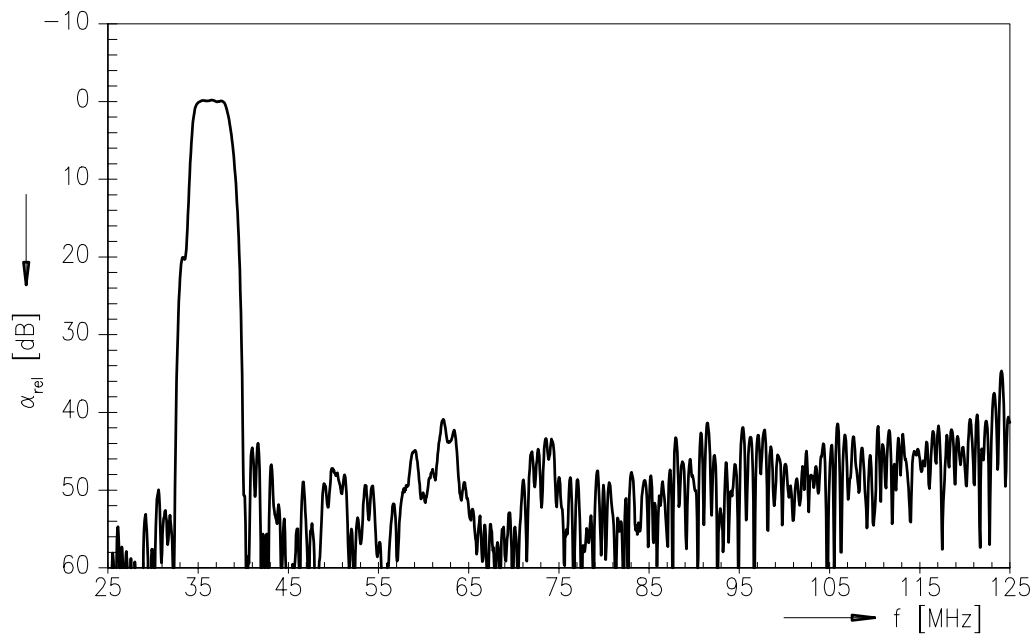




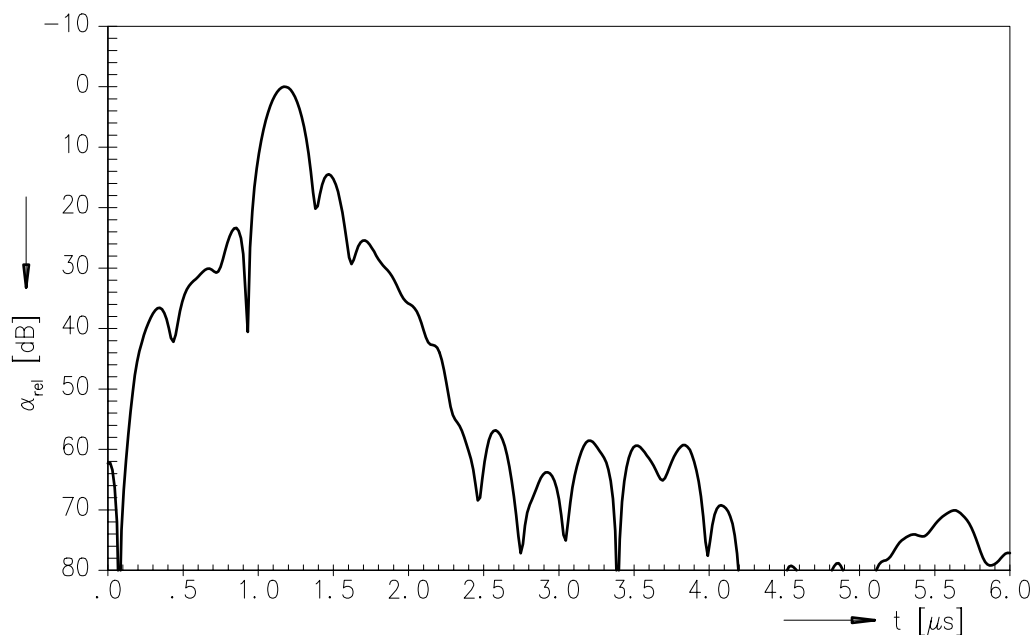
<b>SAW Components</b>	<b>G 1962 M</b>
<b>IF Filter for Intercarrier Applications</b>	<b>38,90 MHz</b>

Data Sheet

Frequency response



Time domain response





<b>SAW Components</b>	<b>G 1962 M</b>
<b>IF Filter for Intercarrier Applications</b>	<b>38,90 MHz</b>

Data Sheet

**Published by EPCOS AG**  
**Surface Acoustic Wave Components Division, SAW CE MM PD**  
**P.O. Box 80 17 09, D-81617 München**

© EPCOS AG 2001. All Rights Reserved.

As far as patents or other rights of third parties are concerned, liability is only assumed for components per se, not for applications, processes and circuits implemented within components or assemblies.

The information describes the type of component and shall not be considered as assured characteristics.

Terms of delivery and rights to change design reserved.

For questions on technology, prices and delivery please contact the sales offices of EPCOS AG or the international representatives.

Due to technical requirements components may contain dangerous substances. For information on the type in question please also contact one of our sales offices.