

PLEASE CHECK WWW.MOLEX.COM FOR LATEST PART INFORMATION

Part Number: [0010021092](#)
Status: **Active**
Overview: [kk](#)
Description: 5.08mm (.200") Pitch KK® PC Board Connector, Bottom Entry Mount Style B, 1.0µm (40µ") Tin (Sn), 9 Circuits

Documents:

[3D Model](#) [Product Specification PS-99020-0087 \(PDF\)](#)
[Drawing \(PDF\)](#) [RoHS Certificate of Compliance \(PDF\)](#)

Agency Certification

CSA LR19980
 UL E29179

General

Product Family PCB Receptacles
 Series [3002](#)
 Application Board-to-Board
 Overview [kk](#)
 Product Name KK®

Physical

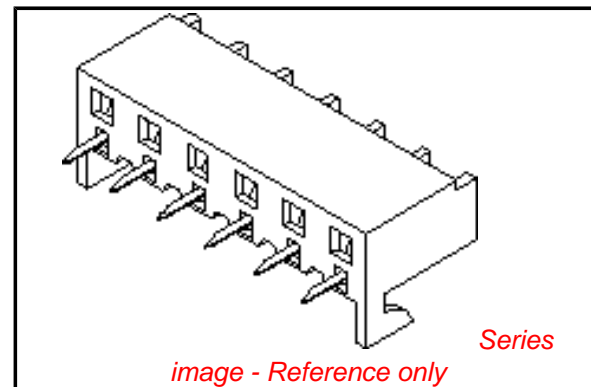
Circuits (Loaded) 9
 Color - Resin Natural
 Durability (mating cycles max) 25
 Flammability 94V-2
 Glow-Wire Compliant No
 Material - Metal Phosphor Bronze
 Material - Plating Mating Tin
 Material - Plating Termination Tin
 Material - Resin Nylon
 Number of Rows 1
 Orientation Bottom Entry
 PC Tail Length (in) 0.160 In
 PC Tail Length (mm) 4.10 mm
 PCB Locator No
 PCB Retention None
 PCB Thickness Recommended (in) 0.062 In
 PCB Thickness Recommended (mm) 1.60 mm
 Packaging Type Tray
 Pitch - Mating Interface (in) 0.200 In
 Pitch - Mating Interface (mm) 5.08 mm
 Plating min: Mating (µin) 40.00
 Plating min: Mating (µm) 1.000
 Plating min: Termination (µin) 40.00
 Plating min: Termination (µm) 1.00
 Polarized to PCB No
 Temperature Range - Operating 0°C to +75°C
 Termination Interface: Style Through Hole

Electrical

Current - Maximum per Contact 7A
 Voltage - Maximum 250V

Material Info

Old Part Number 300209B



EU RoHS

**ELV and RoHS
 Compliant**
**REACH SVHC
 Not Reviewed**
**Halogen-Free
 Status
 Not Reviewed**

China RoHS



**Need more information on product
 environmental compliance?**

Email productcompliance@molex.com
 For a multiple part number RoHS Certificate of
 Compliance, [click here](#)

Please visit the [Contact Us](#) section for any
 non-product compliance questions.

Search Parts in this Series

[3002Series](#)

Mates With

[3003](#) , [2599](#) , [3008](#)

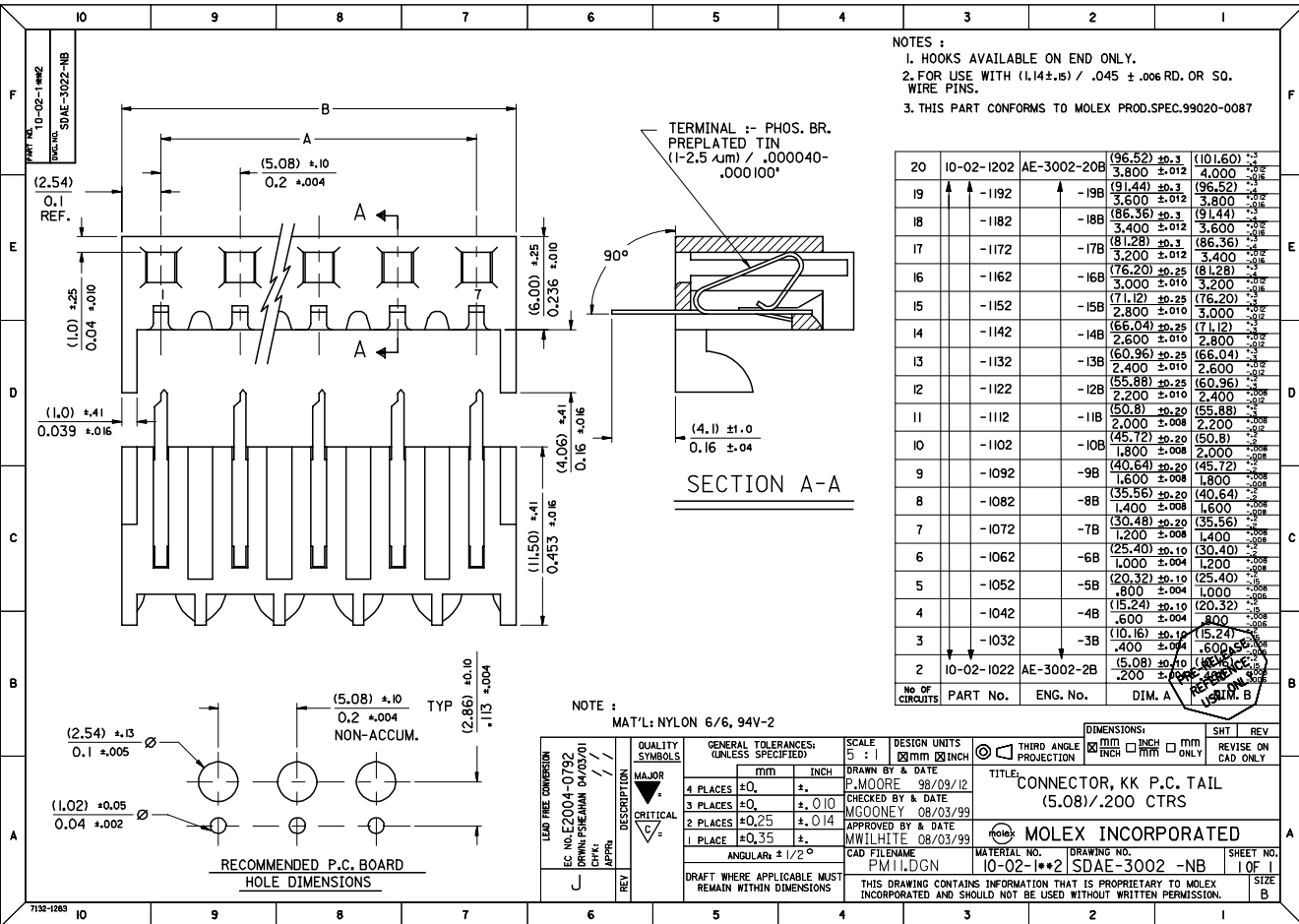
Reference - Drawing Numbers

Product Specification
Sales Drawing

PS-99020-0087
SDAE-3002-NB

This document was generated on 05/21/2010

PLEASE CHECK WWW.MOLEX.COM FOR LATEST PART INFORMATION



NOTES :
 1. HOOKS AVAILABLE ON END ONLY.
 2. FOR USE WITH (1.14±.05) / .045 ± .006 RD. OR SQ. WIRE PINS.
 3. THIS PART CONFORMS TO MOLEX PROD.SPEC.99020-0087

No. OF CIRCUITS	PART No.	ENG. No.	DIM. A	DIM. B
20	10-02-1202	AE-3002-20B	(96.52) ±0.3 3.800 ±0.012	(101.60) ±0.3 4.000 ±0.012
19	-1192	-19B	(91.44) ±0.3 3.600 ±0.012	(96.52) ±0.3 3.800 ±0.012
18	-1182	-18B	(86.36) ±0.3 3.400 ±0.012	(91.44) ±0.3 3.600 ±0.012
17	-1172	-17B	(81.28) ±0.3 3.200 ±0.012	(86.36) ±0.3 3.400 ±0.012
16	-1162	-16B	(76.20) ±0.25 3.000 ±0.010	(81.28) ±0.3 3.200 ±0.012
15	-1152	-15B	(71.12) ±0.25 2.800 ±0.010	(76.20) ±0.25 3.000 ±0.012
14	-1142	-14B	(66.04) ±0.25 2.600 ±0.010	(71.12) ±0.25 2.800 ±0.012
13	-1132	-13B	(60.96) ±0.25 2.400 ±0.010	(66.04) ±0.25 2.600 ±0.012
12	-1122	-12B	(55.88) ±0.25 2.200 ±0.010	(60.96) ±0.25 2.400 ±0.012
11	-1112	-11B	(50.8) ±0.20 2.000 ±0.008	(55.88) ±0.25 2.200 ±0.012
10	-1102	-10B	(45.72) ±0.20 1.800 ±0.008	(50.8) ±0.20 2.000 ±0.008
9	-1092	-9B	(40.64) ±0.20 1.600 ±0.008	(45.72) ±0.20 1.800 ±0.008
8	-1082	-8B	(35.56) ±0.20 1.400 ±0.008	(40.64) ±0.20 1.600 ±0.008
7	-1072	-7B	(30.48) ±0.20 1.200 ±0.008	(35.56) ±0.20 1.400 ±0.008
6	-1062	-6B	(25.40) ±0.10 1.000 ±0.004	(30.48) ±0.20 1.200 ±0.008
5	-1052	-5B	(20.32) ±0.10 .800 ±0.004	(25.40) ±0.10 1.000 ±0.008
4	-1042	-4B	(15.24) ±0.10 .600 ±0.004	(20.32) ±0.10 .800 ±0.008
3	-1032	-3B	(10.16) ±0.10 .400 ±0.004	(15.24) ±0.10 .600 ±0.008
2	10-02-1022	AE-3002-2B	(5.08) ±0.10 .200 ±0.002	(10.16) ±0.10 .400 ±0.008

QUALITY SYMBOLS
 MAJOR / MINOR / CRITICAL / DESCRIPTION

GENERAL TOLERANCES: (UNLESS SPECIFIED)
 4 PLACES ±0. INCH ±.010
 3 PLACES ±0. INCH ±.014
 2 PLACES ±0.25 INCH ±.014
 1 PLACE ±0.35 INCH ±.014
 ANGULARLY ± 1/2°

SCALE
 5 : 1
 mm INCH

DESIGN UNITS
 mm INCH

THIRD ANGLE PROJECTION
 THIRD ANGLE PROJECTION

DIMENSIONS:
 mm INCH mm ONLY

SHT | REV
 REVISE ON CAD ONLY

TITLE: CONNECTOR, KK P.C. TAIL (5.08)/.200 CTRS

MOLEX INCORPORATED

CAD FILENAME: PM1LDGN
MATERIAL NO.: 10-02-1**2
DRAWING NO.: SDAE-3002-NB

SHEET NO.: 1 OF 1
SIZE: B

DRAFT WHERE APPLICABLE MUST REMAIN WITHIN DIMENSIONS
 THIS DRAWING CONTAINS INFORMATION THAT IS PROPRIETARY TO MOLEX INCORPORATED AND SHOULD NOT BE USED WITHOUT WRITTEN PERMISSION.

SHT. 1 OF 1		MRI - SDAE-3002-NB			
MODIFICATION RECORD INDEX					
ECN	ISS.	DATE	INIT.	SHTS. AFFECTED	DESCRIPTION OF MOD.
E90109	F			I	
	G			I	
E2003-0992	H	03.03.27	PS	I	NEW PROD.SPEC. 99020-0087 ADDED

MOLEX EUROPE		REVISE ONLY ON CAD SYSTEM	
THIS DRAWING CONTAINS INFORMATION THAT IS PROPRIETARY TO MOLEX INC. & SHOULD NOT BE USED WITHOUT WRITTEN PERMISSION		CAD/CAM FILENAME	ISSUE
MF0028		PM11 .DGN	H