

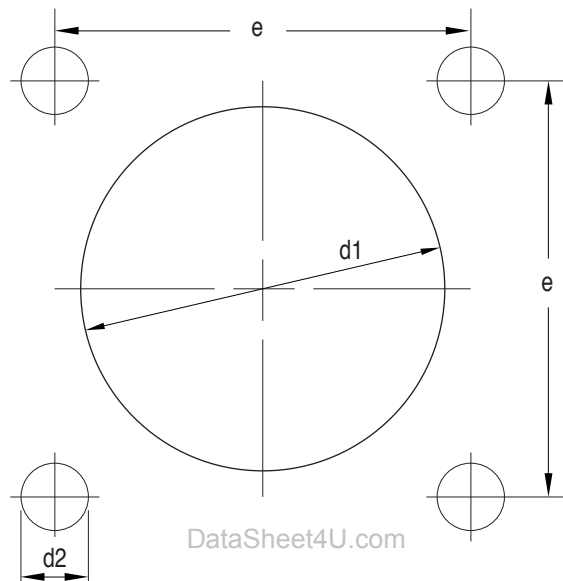
VG95234 Connectors



● Mounting dimensions

● Mounting Holes

Mounting holes for wall mounting receptacles style A, B1, B2, C1, C2, J1, J2, N1 and N2 acc. to VG95234



DataSheet4U.com

DataShee

Shell Size	$\varnothing d_1$ H12		$\varnothing d_2$ H13		e $\pm 0.15(.006)$	d_2 Screw To Be Used	
	Style A	Style B1, B2 C1, C2, J1, J2 N1, N2	Style A, B2, C2 J2, N2	Style B1, C1, J1, N1		Style A, B2, C2, J2 N2	Style B1, C1, J1, N
10SL	16.40 (.646)	18.50 (.728)	3.40 (.134)	4.50 (.177)	18.20 (.717)	M3...DIN 85	M4...DIN 84
12S	16.40 (.646)	21.70 (.854)	3.40 (.134)	4.50 (.177)	20.60 (.811)	M3...DIN 85	M4...DIN 84
14S	19.70 (.776)	24.90 (.980)	3.40 (.134)	4.50 (.177)	23.00 (.906)	M3...DIN 85	M4...DIN 84
16S	22.90 (.902)	27.70 (1.091)	3.40 (.134)	4.50 (.177)	24.60 (.969)	M3...DIN 85	M4...DIN 84
16	22.90 (.902)	27.70 (1.091)	3.40 (.134)	4.50 (.177)	24.60 (.969)	M3...DIN 85	M4...DIN 84
18	26.10 (1.028)	31.10 (1.224)	3.40 (.134)	4.50 (.177)	27.00 (1.063)	M3...DIN 85	M4...DIN 84
20	29.50 (1.161)	34.50 (1.358)	3.40 (.134)	4.50 (.177)	29.40 (1.157)	M3...DIN 85	M4...DIN 84
22	32.70 (1.287)	37.80 (1.488)	3.40 (.134)	4.50 (.177)	31.80 (1.252)	M3...DIN 85	M4...DIN 84
24	36.00 (1.417)	41.30 (1.626)	3.90 (.154)	4.50 (.177)	34.90 (1.374)	M3.5...DIN 85	M4...DIN 84
28	42.00 (1.654)	47.10 (1.854)	3.90 (.154)	5.50 (.217)	39.70 (1.563)	M3.5...DIN 85	M5...DIN 84
32	48.30 (1.902)	53.80 (2.118)	4.50 (.177)	5.50 (.217)	44.50 (1.752)	M4...DIN 85	M5...DIN 84
36	54.60 (2.150)	60.00 (2.362)	4.50 (.177)	5.50 (.217)	49.20 (1.937)	M4...DIN 85	M5...DIN 84

When used with safety elements the max. outer diameter must not exceed the outer diameter of the screw head.

VG95234 Connectors



● Mounting dimensions

● Harnessing

VG95234 connectors are designed for single wire harnessing.
Full sealing will be guaranteed only by using wires in accordance with MIL-W-5086, LN9251(for AWG) and TL6145-009 and TL-6145-011(for metric wires).
All other wires have to conform to wire and insulation diameters with the data given in the following table:

AWG	Contact Size Metric	Crimp-and Solder contacts		AWG	Insulation ø Metric mm
		AWG	Metric mm		
-	10	-	0.75-1.00	-	2.20-2.50
16S / 15S	16/15	16	0.75-1.50	2.20-2.80	2.20-2.80
12	25	12	2.50	3.10-3.50	3.10-3.50
-	60	-	6.00	-	4.40-4.90
8	100	8	10.00	5.50-6.50	5.90-6.50
4	160	4	16.00	8.50-9.40	7.10-7.70
0	500	0	50.00	11.50-13.00	12.10-12.80

1. ALL DIMENSIONS ARE MILLIMETERS.

● Wire Stripping

Either mechanical or hot stripping can be used.
Prevent conductor or insulator damage. For solder contacts, conductors have to be pretinned.

Note : Do not twist conductors used with crimp contacts.
Do not touch uninsulated conductors before crimping. Twisting of conductors and grease or lubricants on the wires cause poor crimp quality.

AWG	Contact Size Metric	Stripping Length mm
-	10	4.00
16S / 15s	16 / 15	6.20
12	25	11.80
8	60 / 100	11.80
4	160	11.80
0	500	13.70

1. ALL DIMENSIONS ARE MILLIMETERS.