

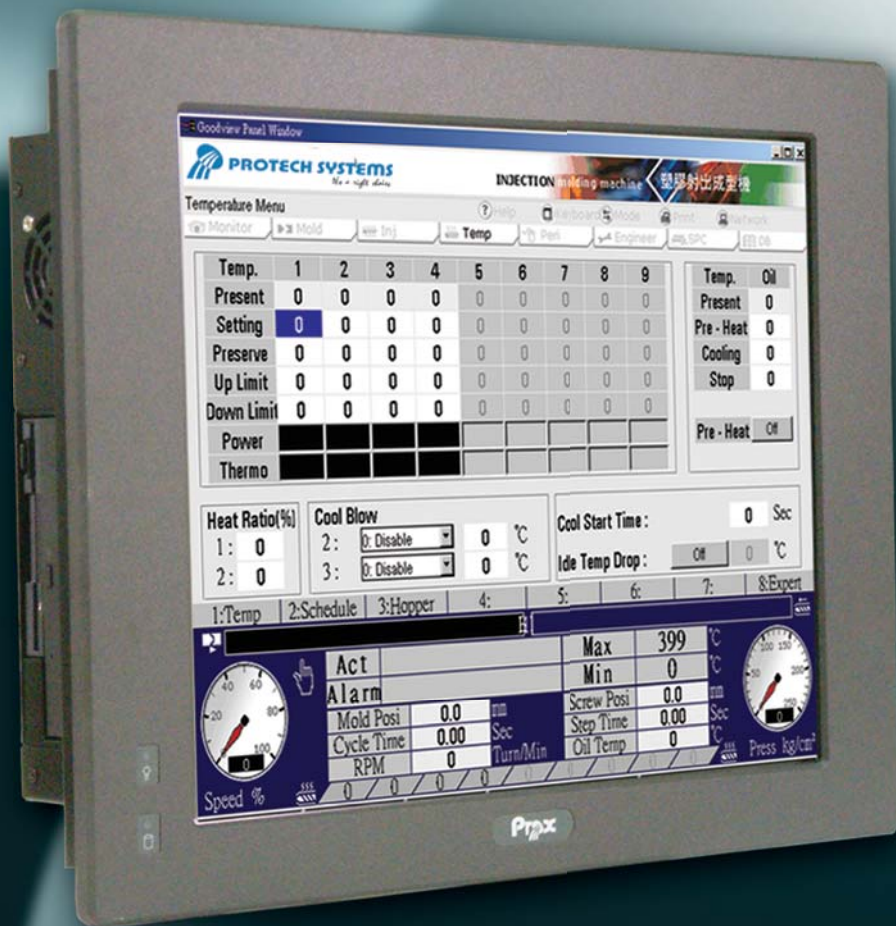
# PPC

## PPC-7507F

### Fanless and Low Power 17" Panel PC

#### Features and Benefits:

- Intel® Celeron® M ULV CPU on board
- Totally fanless and quiet design
- Low power consumption and economical solution
- On-board IDE interface, Type II Compact Flash slot
- Optional slim CD-ROM drive
- Optional PCI Expansion slot (1 or 3 slots)
- 24V DC power support, optional power adapter for AC power



**PROTECH SYSTEMS**

*It's the right choice*

No. 24, Lane 365, Yang Guang St., Nei Hu District, Taipei 114, Taiwan, R.O.C.

Tel: +886-2-8751-1111

Fax: +886-2-8751-1199

Email: sales@protech.com.tw

http://www.protech.com.tw



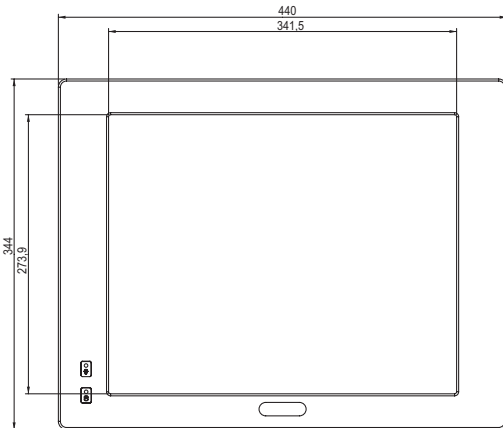
**ISO CERTIFIED**

**9001 | 14001**

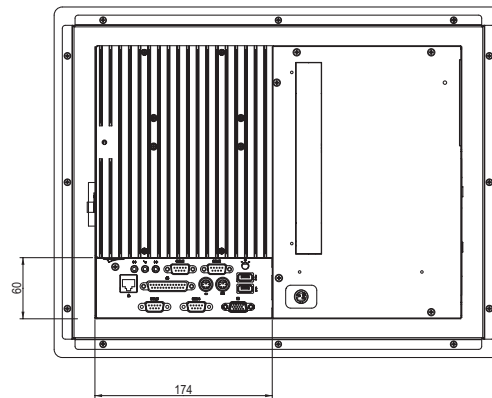
# PPC-7507F

## Fanless and Low Power 17" Panel PC

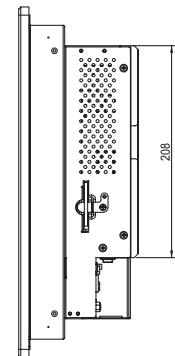
Front View



Rear View



Side View



Unit: mm

### Specification

#### Systems

<b>CPU Support</b>	Intel Celeron M ULV 1.0GHz on board
<b>Memory Support</b>	1 x 200pin DDR SO-DIMM, support DDR 333 SDRAM up to 1GB
<b>Front Bazel</b>	Aluminum
<b>IP65/NEMA4</b>	Yes
<b>Power Supply</b>	DC 24Vin 80W power supply / AC 100-240Vin (optional power adapter)
<b>O.S. Support</b>	Win 98SE/2000/XP/CE.net, Linux Redhat 8.0/9.0
<b>Dimension (WxHxD)</b>	440 x 344 x 107 mm (17.32" x 13.54" x 4.21")
<b>System Weight</b>	8 Kg (17.63lb)
<b>VESA Mounting Support</b>	75mm / 100mm VESA bracket (optional)
<b>Certificate</b>	CE / FCC

#### I/O Ports

<b>USB</b>	2 x USB2.0
<b>KB / Mouse</b>	2
<b>Audio</b>	Line in / Line out / MIC in
<b>Parallel</b>	1 x parallel port (SPP / EPP / ECP)
<b>Serial Port</b>	4 x COMs, COM1 supports +5V or +12V, COM2 for RS232/422/485, COM 2/3/4 supports +5V
<b>Digital I/O</b>	N/A

<b>LAN</b>	10/100 Mbps
<b>VGA</b>	1
<b>Brightness Control</b>	VR on rear panel
<b>Drive Bay</b>	1 x 2.5" HDD, 1 x IDE CF slot on board, 1 x Slim CD-ROM (optional)
<b>Expansion Slots</b>	1 x PCI or 3 x PCI slot (optional)

#### Display

<b>LCD</b>	17" SXGA TFT LCD
<b>Touch Screen</b>	7W Analog resistive (USB interface)

#### Environment

<b>Operating Temp.</b>	0° ~ 40°C
<b>Storage Temp.</b>	-20° ~ 60°C
<b>Humidity</b>	20% ~ 90%

#### Ordering

<b>PPC-7507F</b>	Fanless Panel PC with 17" LCD, Intel Celeron M ULV 1.0GHz CPU board, resistive touchscreen, 24V 80W DC power supply
<b>EFSP120-ACB</b>	120W, 24 Vdc output power adaptor
<b>PPC-7500-1P</b>	1 x PCI riser card for PPC-7505F/7507F
<b>PPC-7500-3P</b>	3 x PCI riser card for PPC-7505F/7507F

All of trademarks and brand names are the property of their owners. Trademark "Protech" is the property of Protech Systems Co., Ltd. All information contained in this document is subject to change without any prior notice. This catalog is copyrighted in JAN. 2007.