



JIANGSU CHANGJIANG ELECTRONICS TECHNOLOGY CO., LTD

SOT-89 Encapsulate Three Terminal Voltage Regulator

CJ79L09 Three-terminal negative voltage regulator

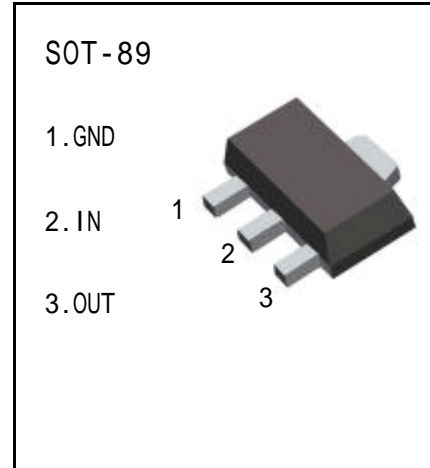
FEATURES

Maximum Output current

$I_{OM}: 0.1\text{ A}$

Output voltage

$V_o: -9\text{ V}$



ABSOLUTE MAXIMUM RATINGS (Operating temperature range applies unless otherwise specified)

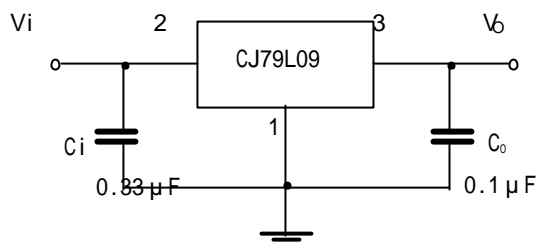
Parameter	Symbol	Value	Units
Input Voltage	V_i	-30	V
Operating Junction Temperature Range	T_{OPR}	0—+125	
Storage Temperature Range	T_{STG}	-55—+150	

ELECTRICAL CHARACTERISTICS

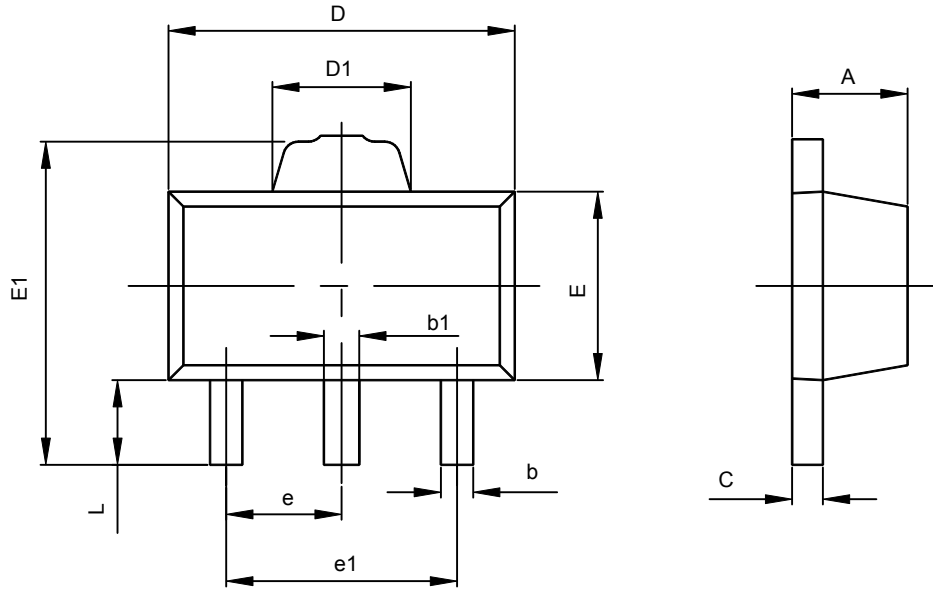
($V_i=10\text{V}, I_o=40\text{mA}, 0 < T_j < 125$, $C_1=0.33\ \mu\text{F}, C_o=0.1\ \mu\text{F}$, unless otherwise specified)

Parameter	Symbol	Test conditions	MIN	TYP	MAX	UNIT
Output voltage	V_o	$V_i=-15\text{V}, I_o=40\text{mA}$	-8.64	-9	-9.36	V
Load Regulation	$V_o - I_o$	$V_i=-15\text{V}, I_o=1\text{mA} \sim 100\text{mA}$		12	90	mV
Line regulation	$V_o - V_i$	$V_i=-12.5\text{V} \sim -24\text{V}, I_o=40\text{mA}$		27	200	mV
Quiescent Current	I_q	$V_i=-15\text{V}, I_o=40\text{mA}$		3.5	6	mA
Output Noise Voltage	V_n	$B_n=10\text{Hz} \sim 100\text{KHz}, V_i=-15\text{V}, I_o=40\text{mA}$		210		μV
Ripple Rejection	RR	$V_i=-12\text{V} \sim -22\text{V}, I_o=40\text{mA}, e_i=1\text{V}_{P-P}, f=150\text{Hz}$	37	64		dB

TYPICAL APPLICATION



SOT-89-3L PACKAGE OUTLINE DIMENSIONS



Symbol	Dimensions In Millimeters		Dimensions In Inches	
	Min	Max	Min	Max
A	1.400	1.600	0.055	0.063
b	0.320	0.520	0.013	0.020
b1	0.360	0.560	0.014	0.022
c	0.350	0.440	0.014	0.017
D	4.400	4.600	0.173	0.181
D1	1.400	1.800	0.055	0.071
E	2.300	2.600	0.091	0.102
E1	3.940	4.250	0.155	0.167
e	1.500TYP		0.060TYP	
e1	2.900	3.100	0.114	0.122
L	0.900	1.100	0.035	0.043