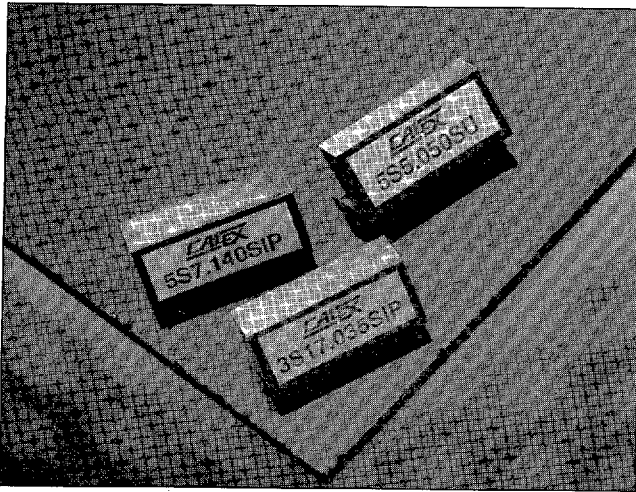


0.6 Watt SIP Series

Single Output



Description

The CALEX SIP is specifically designed to provide nonstandard output voltages and isolation for the latest 3 volt digital systems. The series provides semi-regulated outputs of 5, 12 and 15 volts for directly driving your circuits or 7, 14 and 17 volt outputs for driving three terminal regulators.

The high efficiency operation of typically 70% for a 12 volt output means efficient use of your system power.

Easy four terminal operation makes using the converter a snap. Just plug it in and you are ready to solve those nasty analog problems that arise when only 3 volt digital power is available in your system.

PRELIMINARY

Industry First 3 Volt Input SIP Converters



Features

- Operating Range of 3.0 to 3.6 Volts
- Semi-Regulated 0.6 Watt Outputs
 - 5, 12, 15 and 7, 14, 17 Volt Outputs
- Simple Four Terminal Operation
- Small SIP package, Fits in 0.19 sq.in. of PCB Area
- Surface Mount Pin Option
- Low Noise Operation
- 5 Year Warranty
- **Customs & Specials - see page D31**

Selection Chart

| Model | Input Range VDC | | Output | | |
|-------------|-----------------|-----|--------|-----|---------|
| | Min | Max | VDC | mA | Power W |
| 3S5.100SIP | 3.0 | 3.6 | 5.0 | 100 | 0.5 |
| 3S7.080SIP | 3.0 | 3.6 | 7.0 | 80 | 0.56 |
| 3S12.050SIP | 3.0 | 3.6 | 12.0 | 50 | 0.6 |
| 3S14.040SIP | 3.0 | 3.6 | 14.0 | 40 | 0.56 |
| 3S15.040SIP | 3.0 | 3.6 | 15.0 | 40 | 0.6 |
| 3S17.035SIP | 3.0 | 3.6 | 17.0 | 35 | 0.6 |

Load Regulation,
20% to 100% Load

7% Typical

Line Regulation

1% / % VIN Typical

Isolation

500 VDC Minimum

I/O Capacitance

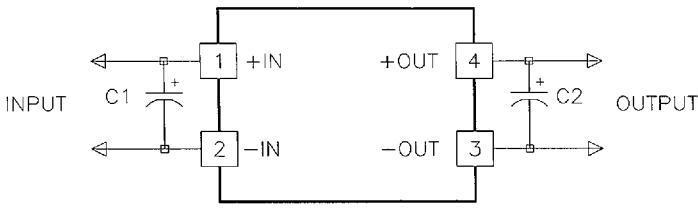
8 pF Typical

Operating Temperature Range

0 to 70°C

0.6 Watt SIP Series

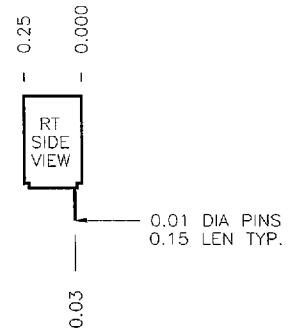
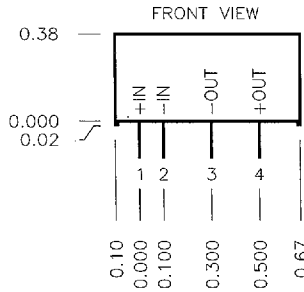
Application



C1 = 10 μ F if converter is more than 2" from the main power source.

C2 = 10 μ F minimum, may be spread around your board.

Pin Out



Single Output



2401 Stanwell Drive
Concord, CA 94520-4841
800-542-3355

1811250 0001257 074

A17