

**PLEASE CHECK WWW.MOLEX.COM FOR LATEST PART INFORMATION**

**Part Number:** [0526102371](#)  
**Status:** **Active**  
**Overview:**  
**Description:** 1.00mm (.039") Pitch FFC/FPC Connector, SMT, Vertical, ZIF Receptacle, 23 Circuits, Lead-free, High Barrier Packaging

**Agency Certification**

CSA LR19980  
 UL E29179

**General**

Product Family FFC/FPC Connectors  
 Series 52610  
 Overview ffc\_fpc\_smt  
 Product Name N/A

**Physical**

Circuits (Loaded) 23  
 Contact Position N/A  
 Durability (mating cycles max) 30  
 Entry Angle Vertical  
 Flammability 94V-0  
 Mated Height (in) 0.226 In  
 Mated Height (mm) 5.75 mm  
 Material - Metal Phosphor Bronze  
 Material - Plating Mating Tin-Bismuth  
 Material - Plating Termination Tin-Bismuth  
 Material - Resin Nylon  
 Number of Rows 1  
 Orientation Vertical  
 PCB Locator No  
 PCB Retention None  
 Packaging Type Embossed Tape on Reel  
 Pitch - Mating Interface (in) 0.039 In  
 Pitch - Mating Interface (mm) 1.00 mm  
 Polarized to PCB No  
 Stackable No  
 Temperature Range - Operating -40°C to +85°C  
 Termination Interface: Style Surface Mount  
 Wire/Cable Type FFC/FPC

**Electrical**

Current - Maximum per Contact 1A  
 Voltage - Maximum 125V

**Material Info**

**Reference - Drawing Numbers**

Packaging Specification SPK-52610-001, SPK-52610-003  
 Product Specification PS-52610-006, RPS-52610-001, RPS-52610-002, RPS-52610-004, RPS-52610-026, RPS-52610-027, RPS-52610-028, RPS-52610-031, RPS-52610-034, RPS-52610-037, RPS-52610-038, RPS-52610-040, RPS-52610-041, RPS-52610-043, RPS-52610-044, RPS-52610-046, RPS-52610-049, RPS-52610-050, RPS-52610-057, RPS-52610-058, RPS-52610-059, RPS-52610-062

**EU RoHS**

**ELV and RoHS Compliant**  
**REACH SVHC Contains SVHC: No**  
**Halogen-Free Status**  
**Not Reviewed**

**China RoHS**



**Need more information on product environmental compliance?**

Email [productcompliance@molex.com](mailto:productcompliance@molex.com)  
 For a multiple part number RoHS Certificate of Compliance, [click here](#)

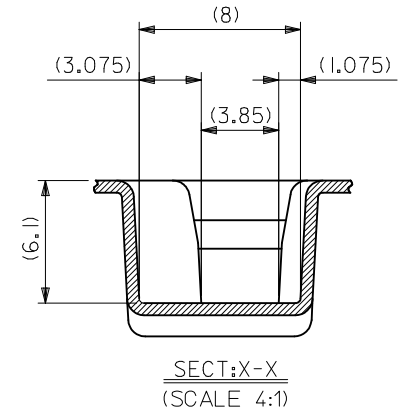
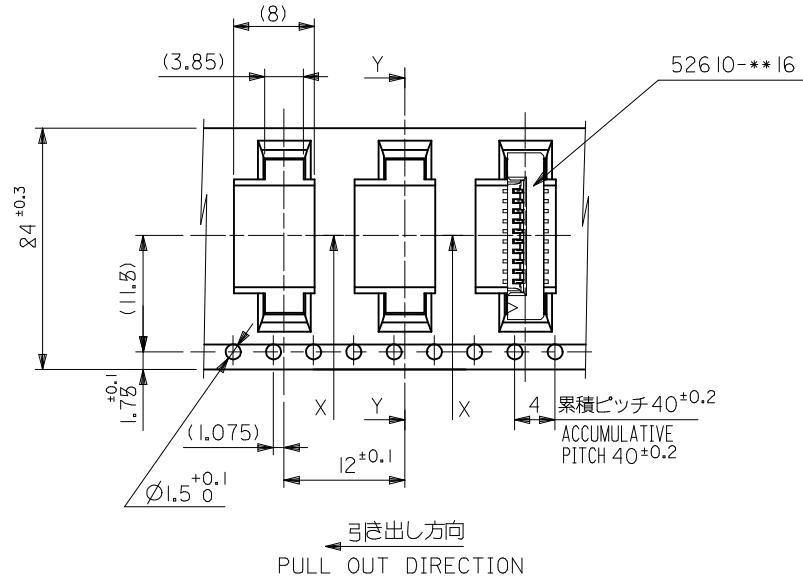
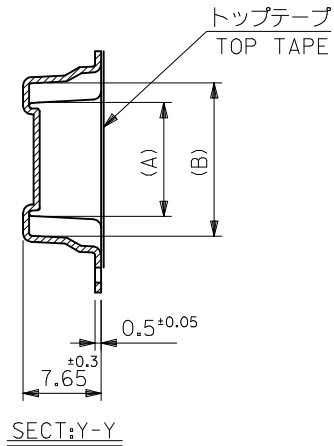
Please visit the [Contact Us](#) section for any non-product compliance questions.

**Search Parts in this Series**  
[52610Series](#)

This document was generated on 06/05/2010

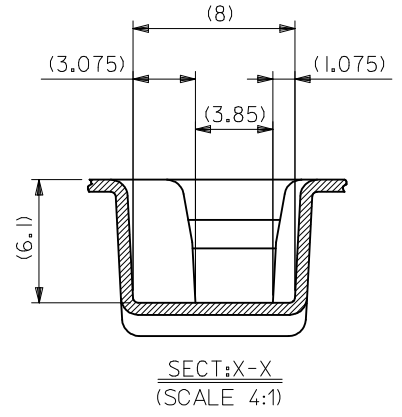
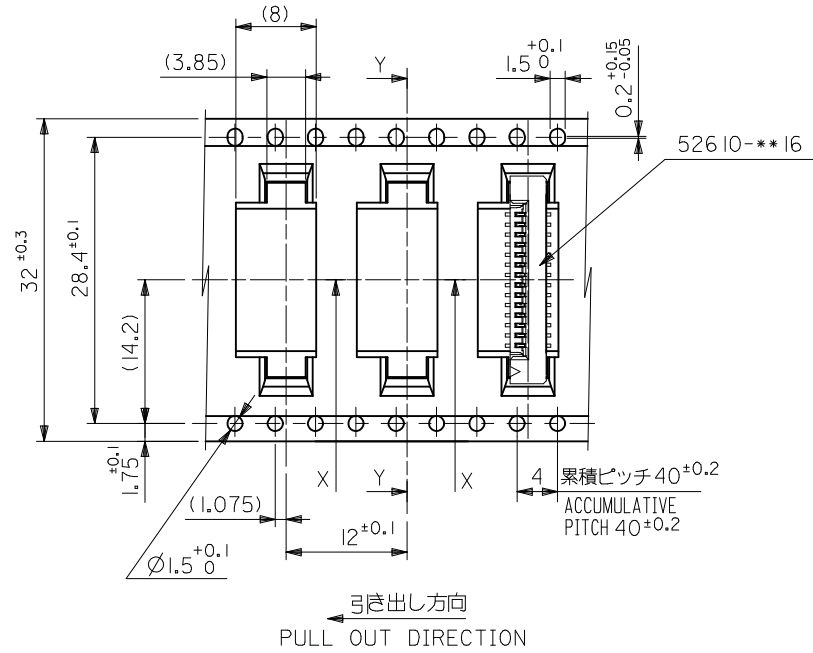
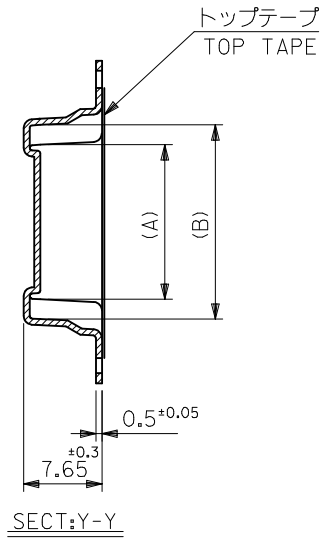
**PLEASE CHECK [WWW.MOLEX.COM](http://WWW.MOLEX.COM) FOR LATEST PART INFORMATION**





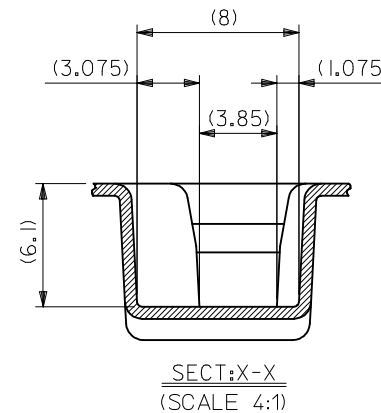
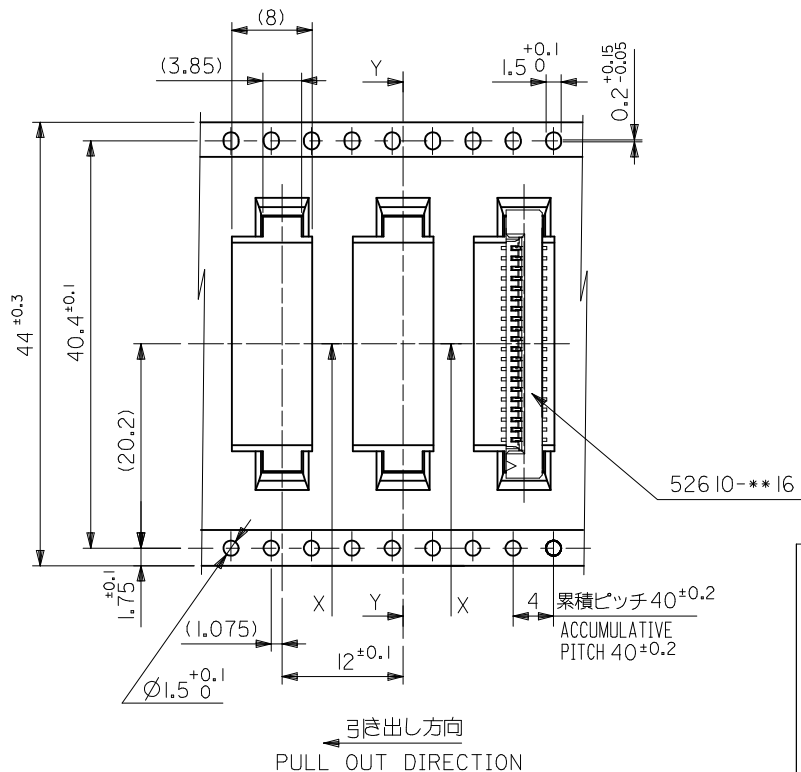
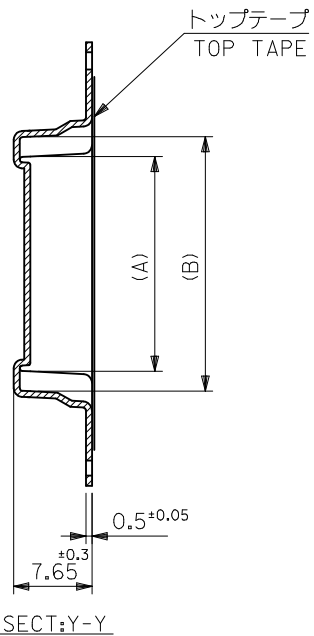
|                                |      |      |             |       |              |            |
|--------------------------------|------|------|-------------|-------|--------------|------------|
| 24                             | 29.4 | 25.4 | 15.25       | 11.32 | 52610-1071   | 10         |
|                                |      |      | 14.25       | 10.32 | 52610-0971   | 9          |
|                                |      |      | 13.25       | 9.32  | 52610-0871   | 8          |
|                                |      |      | 12.25       | 8.32  | 52610-0771   | 7          |
|                                |      |      | 11.25       | 7.32  | 52610-0671   | 6          |
|                                |      |      | 10.25       | 6.32  | 52610-0571   | 5          |
| キャリアテープ幅<br>CARRIER TAPE WIDTH | D    | C    | (B)         | (A)   | MATERIAL NO. | 極数<br>CKT. |
|                                |      |      | 52610-**-71 |       | MODEL NO.    |            |

|   |             |   |  |                            |                              |  |                        |                           |  |
|---|-------------|---|--|----------------------------|------------------------------|--|------------------------|---------------------------|--|
| REVISED<br>EC NO: J2009-2061<br>DRW:TKON 2009/05/20<br>CHKD:HMATSUMOTO 2009/05/21<br>APPR:NUKITA 2009/05/21 | DESCRIPTION | GENERAL TOLERANCES (UNLESS SPECIFIED)   |  | DIMENSION STYLE<br>MM ONLY |                              | SCALE<br>---   | DESIGN UNITS<br>METRIC | THIRD ANGLE<br>PROJECTION |  |
|   |             | 10 UNDER  | ± 0.2  | DRAWN BY<br>T.UENO         | DATE<br>'03/12/12            | TITLE<br>1.0 FPC CONN SMT<br>ZIF EMBSTP PKG<br>-LEAD FREE- |                        |                           |  |
|   |             | 10 OVER 30 UNDER  | ± 0.25   | CHECKED BY<br>M.SASAO      | DATE<br>'03/12/12            | MOLEX INCORPORATED   |                        |                           |  |
|   |             | 30 OVER   | ± 0.3  | APPROVED BY<br>M.SASAO     | DATE<br>'03/12/12            |  |                        |                           |  |
|   |             | ANGULAR ±3 °  | DRAFT WHERE APPLICABLE<br>MUST REMAIN<br>WITHIN DIMENSIONS | MATERIAL NO.<br>SEE TABLE  | DOCUMENT NO.<br>SD-52610-038 | SHEET NO.<br>2 OF 5  |                        |                           |  |
|   |             | THIS DRAWING CONTAINS INFORMATION THAT IS PROPRIETARY TO MOLEX INCORPORATED AND SHOULD NOT BE USED WITHOUT WRITTEN PERMISSION |  |                            |                              |  |                        |                           |  |



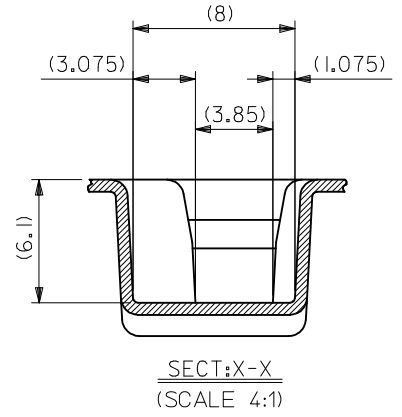
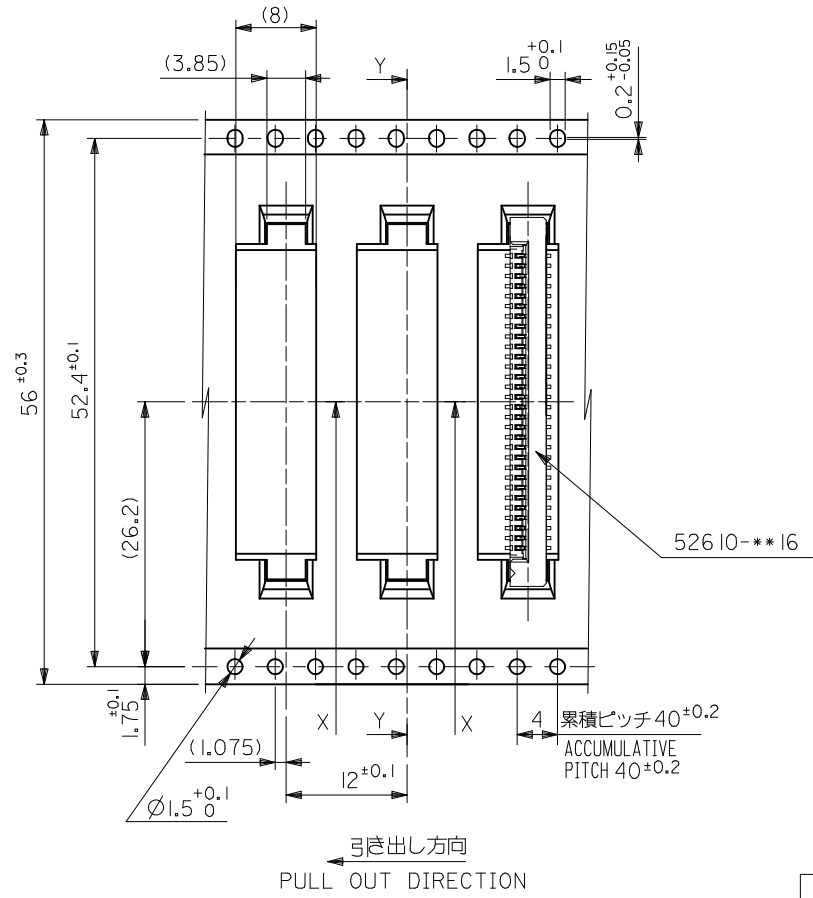
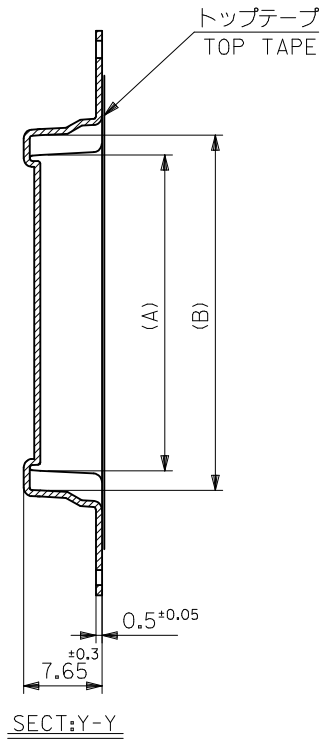
|                                |      |      |       |       |              |            |
|--------------------------------|------|------|-------|-------|--------------|------------|
| 32                             | 37.4 | 33.4 | 20.25 | 16.32 | 52610-1571   | 15         |
|                                |      |      | 19.25 | 15.32 | 52610-1471   | 14         |
|                                |      |      | 18.25 | 14.32 | 52610-1371   | 13         |
|                                |      |      | 17.25 | 13.32 | 52610-1271   | 12         |
|                                |      |      | 16.25 | 12.32 | 52610-1171   | 11         |
| キャリアテープ幅<br>CARRIER TAPE WIDTH | D    | C    | (B)   | (A)   | MATERIAL NO. | 種数<br>CKT. |

|  |  |       |                            |                   |  |                        |                        |  |
|--|--|-------|----------------------------|-------------------|--|------------------------|------------------------|--|
| REVISED<br>EC NO: J2009-2061<br>DRWN:TKON 2009/05/20<br>CHKD:HMATSUMOTO 2009/05/21<br>APPR:NUKITA 2009/05/21 | GENERAL TOLERANCES (UNLESS SPECIFIED)                                      |       | DIMENSION STYLE<br>MM ONLY |                   | SCALE<br>---   | DESIGN UNITS<br>METRIC | THIRD ANGLE PROJECTION |  |
|  | 10 UNDER   | ±0.2  | DRAWN BY<br>T.UENO         | DATE<br>'03/12/12 | TITLE<br>1.0 FPC CONN SMT<br>ZIF EMBSTP PKG<br>-LEAD FREE-   |                        |                        |  |
|  | 10 OVER 30 UNDER   | ±0.25 | CHECKED BY<br>M.SASAO      | DATE<br>'03/12/12 | MOLEX INCORPORATED   |                        |                        |  |
|  | 30 OVER  | ±0.3  | APPROVED BY<br>M.SASAO     | DATE<br>'03/12/12 | DOCUMENT NO.<br>SD-52610-038   |                        | SHEET NO.<br>3 OF 5    |  |
|  | ANGULAR ±3 °<br>DRAFT WHERE APPLICABLE<br>MUST REMAIN<br>WITHIN DIMENSIONS |       | MATERIAL NO.<br>SEE TABLE  |                   | THIS DRAWING CONTAINS INFORMATION THAT IS PROPRIETARY TO MOLEX<br>INCORPORATED AND SHOULD NOT BE USED WITHOUT WRITTEN PERMISSION |                        |                        |  |



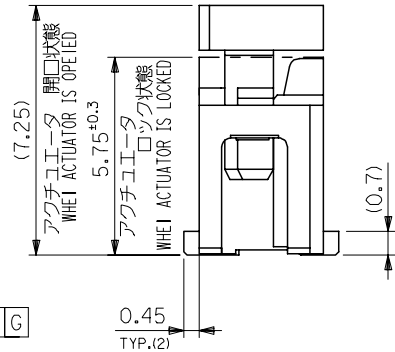
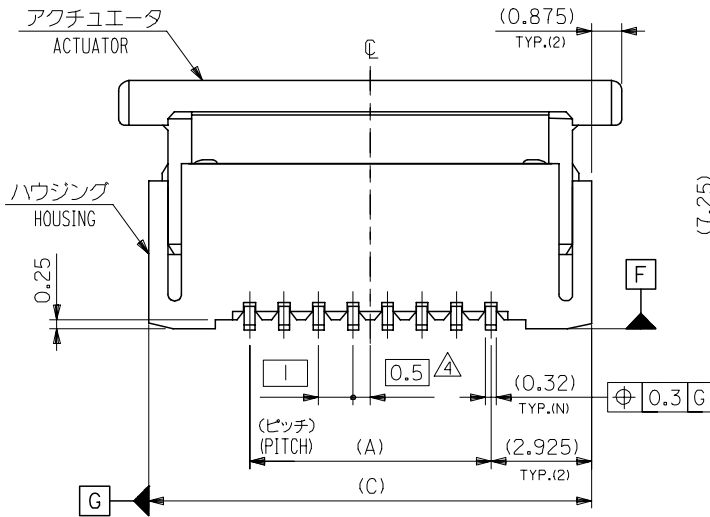
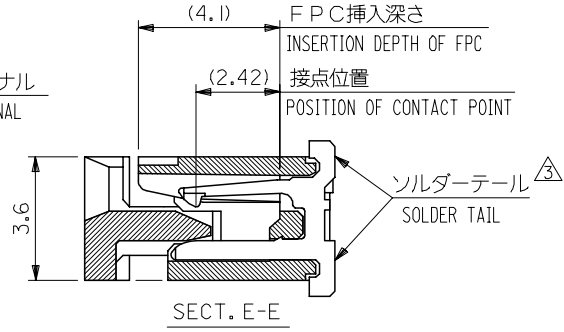
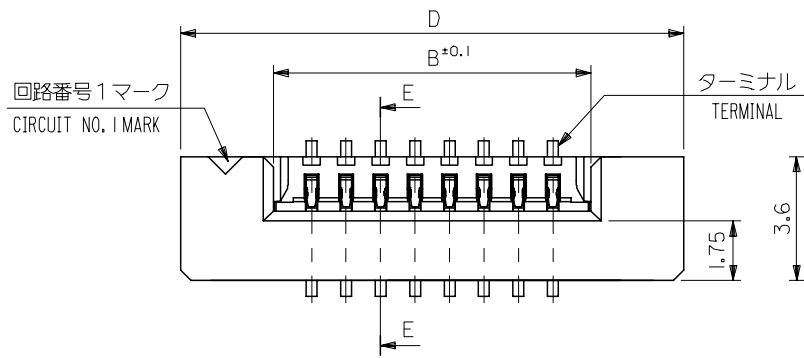
|                                |       |            |             |           |              |            |
|--------------------------------|-------|------------|-------------|-----------|--------------|------------|
| 44                             | 49.4  | 45.4       | 31.25       | 27.32     | 52610-2671   | 26         |
|                                |       |            | 30.25       | 26.32     | 52610-2571   | 25         |
|                                |       |            | 29.25       | 25.32     | 52610-2471   | 24         |
|                                |       |            | 28.25       | 24.32     | 52610-2371   | 23         |
|                                |       |            | 27.25       | 23.32     | 52610-2271   | 22         |
|                                |       |            | 26.25       | 22.32     | 52610-2171   | 21         |
|                                |       |            | 25.25       | 21.32     | 52610-2071   | 20         |
|                                |       |            | 24.25       | 20.32     | 52610-1971   | 19         |
|                                |       |            | 23.25       | 19.32     | 52610-1871   | 18         |
|                                |       |            | 22.25       | 18.32     | 52610-1771   | 17         |
| 21.25                          | 17.32 | 52610-1671 | 16          |           |              |            |
| キャリアテープ幅<br>CARRIER TAPE WIDTH | D     | C          | (B)         | (A)       | MATERIAL NO. | 極数<br>CKT. |
|                                |       |            | 52610-**-71 | MODEL NO. |              |            |

|  |  |   |                            |                   |  |                        |                              |                        |  |
|--|--|---|----------------------------|-------------------|--|------------------------|------------------------------|------------------------|--|
| REVISED<br>EC NO: J2009-2061<br>DRWN:TKON 2009/05/20<br>CHKD:HMATSUMOTO 2009/05/21<br>APPR:NIKI ITA 2009/05/21 | GENERAL TOLERANCES (UNLESS SPECIFIED)                |   | DIMENSION STYLE<br>MM ONLY |                   | SCALE<br>---   | DESIGN UNITS<br>METRIC |                              | THIRD ANGLE PROJECTION |  |
|  | 10 UNDER   | ±0.2  | DRAWN BY<br>T. UENO        | DATE<br>'03/12/12 | TITLE<br>1.0 FPC CONN SMT<br>ZIF EMBSTP PKG<br>-LEAD FREE- |                        |                              |                        |  |
|  | 10 OVER 30 UNDER                                     | ±0.25   | CHECKED BY<br>M. SASAO     | DATE<br>'03/12/12 | MOLEX INCORPORATED   |                        |                              |                        |  |
|  | 30 OVER  | ±0.3  | APPROVED BY<br>M. SASAO    | DATE<br>'03/12/12 | MATERIAL NO.<br>SEE TABLE                                  |                        | DOCUMENT NO.<br>SD-52610-038 | SHEET NO.<br>4 OF 5    |  |
|  | ANGULAR ±3 °   | THIS DRAWING CONTAINS INFORMATION THAT IS PROPRIETARY TO MOLEX INCORPORATED AND SHOULD NOT BE USED WITHOUT WRITTEN PERMISSION |                            |                   |  |                        |                              |                        |  |
|  | DRAFT WHERE APPLICABLE MUST REMAIN WITHIN DIMENSIONS |   |                            |                   |  |                        |                              |                        |  |



|                                |      |      |       |       |              |            |
|--------------------------------|------|------|-------|-------|--------------|------------|
| 56                             | 61.4 | 57.4 | 35.25 | 31.32 | 52610-3071   | 30         |
|                                |      |      | 33.25 | 29.32 | 52610-2871   | 28         |
| キャリアテープ幅<br>CARRIER TAPE WIDTH | D    | C    | (B)   | (A)   | MATERIAL NO. | 種数<br>CKT. |
|                                |      |      |       |       | 52610-**-71  | MODEL NO.  |

|   |                                       |   |                            |                           |  |                        |  |                        |  |
|---|---------------------------------------|---|----------------------------|---------------------------|--|------------------------|--|------------------------|--|
| REVISED<br>EC NO: J2009-2061<br>DRWN:TKON 2009/05/20<br>CHKD:HMATSUMOTO 2009/05/21<br>APPR:NIKIITA 2009/05/21 | GENERAL TOLERANCES (UNLESS SPECIFIED) |   | DIMENSION STYLE<br>MM ONLY |                           | SCALE<br>---   | DESIGN UNITS<br>METRIC |  | THIRD ANGLE PROJECTION |  |
|   | 10 UNDER                              | ±0.2  | DRAWN BY<br>T.UENO         | DATE<br>'03/12/12         | TITLE<br>1.0 FPC CONN SMT<br>ZIF EMBSTP PKG<br>-LEAD FREE- |                        |  |                        |  |
|   | 10 OVER 30 UNDER                      | ±0.25   | CHECKED BY<br>M.SASAO      | DATE<br>'03/12/12         | MOLEX INCORPORATED   |                        |  |                        |  |
|   | 30 OVER                               | ±0.3  | APPROVED BY<br>M.SASAO     | DATE<br>'03/12/12         | DOCUMENT NO.<br>SD-52610-038                               |                        |  |                        |  |
|   | ANGULAR ±3 °                          | DRAFT WHERE APPLICABLE MUST REMAIN WITHIN DIMENSIONS  |                            | MATERIAL NO.<br>SEE TABLE |  | SHEET NO.<br>5 OF 5    |  |                        |  |
|   |                                       | THIS DRAWING CONTAINS INFORMATION THAT IS PROPRIETARY TO MOLEX INCORPORATED AND SHOULD NOT BE USED WITHOUT WRITTEN PERMISSION |                            |                           |  |                        |  |                        |  |



注記 (NOTES):

- 材料 (MATERIAL)  
 ハウジング (HOUSING): 46NYLON, UL94V-0  
 アクチュエータ (ACTUATOR): PPS, UL94V-0  
 ターミナル (TERMINAL): リン青銅 (±0.32)  
 PHOS-BRO  
 銅・2%ビスマスメッキ 1. 0マイクロメートル以上  
 TIN 2% BISMUTH 1.0 MICROMETER MINIMUM  
 ニッケル下地 1. 0マイクロメートル以上  
 NICKEL (UNDER PLATING) 1.0 MICROMETER MINIMUM
- エンボステープ梱包時は、アクチュエータがロックした状態とする。  
 IN THE PACKAGE, ACTUATOR OF PART NO. 52610-\*\*\*16 SHOULD BE LOCKED.
- 溶剤テール半田付け面のズレ量は、基準面 [F] に対し上方向 0.05 MAX., 下方向 0.15 MAX. とする。  
 MISALIGNMENT OF SOLDER TAILS FROM [F] UPPER DIRECTION: 0.05 MAX., LOWER DIRECTION: 0.15 MAX.
- 偶数極に適用。  
 APPLY FOR EVEN CIRCUIT.
- 本製品は 52610-\*\*\*17 の鉛フリー品です

|              |                        |
|--------------|------------------------|
| MODEL NO.    | 52610-***16            |
| DESIGN UNITS | METRIC                 |
|              | THIRD ANGLE PROJECTION |

|  |                                       |             |                 |   |  |
|--|---------------------------------------|-------------|-----------------|---|--|
| REVISED<br>EC NO: J2006-3196<br>DRWN: NABEI 2006/04/17<br>CHKD: TOYODA 2006/04/18<br>APPR: NUKITA 2006/04/20 | GENERAL TOLERANCES (UNLESS SPECIFIED) |             | DIMENSION STYLE | SCALE   | TITLE  |
|  |                                       |             | MM ONLY         | ---   |  |
|  | 10 UNDER                              | ±0.2        | DRAWN BY        | DATE  | 1.0 FPC CONNECTOR<br>Z.I.F. FOR SMT.(ST.)<br>-LEAD FREE- |
|  | 10 OVER 30 UNDER                      | ±0.25       | TUENO           | '03/12/12   |  |
| 30 OVER  | ±0.3                                  | CHECKED BY  | DATE            | MOLEX INCORPORATED  |  |
| ANGULAR  | ±3 °                                  | MSASAO      | '03/12/12       |   |  |
| DRAFT WHERE APPLICABLE MUST REMAIN WITHIN DIMENSIONS   |                                       | APPROVED BY | DATE            | MATERIAL NO.  | DOCUMENT NO.   |
|  |                                       | MSASAO      | '03/12/12       | SEE CHART   | SD-52610-041   |
|  |                                       | SIZE        | A3              | THIS DRAWING CONTAINS INFORMATION THAT IS PROPRIETARY TO MOLEX INCORPORATED AND SHOULD NOT BE USED WITHOUT WRITTEN PERMISSION |  |



10 9 8 7 6 5 4 3 2 1

F

F

E

E

D

D

C

C

B

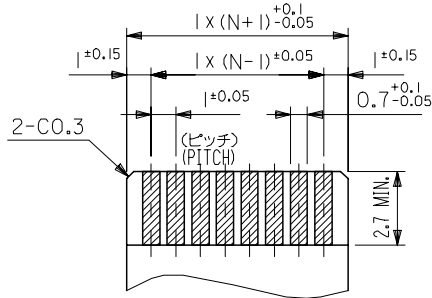
B

A

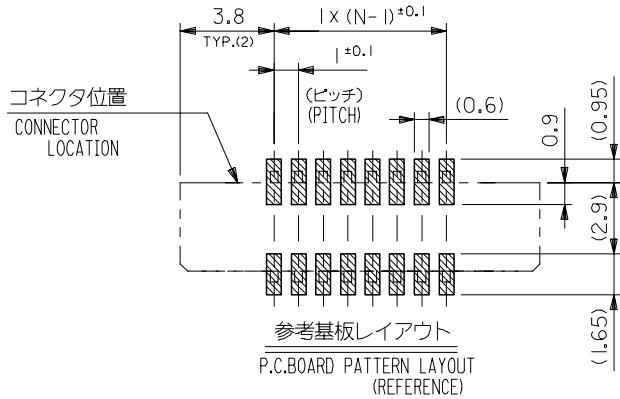
A

FPCについて:  
 打抜き方向は導体側から補強板側を推奨致します。  
 補強フィルム材質はポリイミドを推奨致します。  
 接着剤は熱硬化接着剤を推奨致します。

ABOUT FPC:  
 RECOMMENDED PUNCHER DIRECTION : FROM CONDUCTOR SIDE TO STIFFENER BOARD SIDE.  
 RECOMMENDED MATERIAL :  
 STIFFENER FILM : POLYIMIDE  
 BONDING AGENT : THERMOSETTING BONDING AGENT



適合FPC推奨寸法  
 APPLICABLE FPC RECOMMENDED DIM.  
 仕上がり厚さ(THICKNESS): 0.3 ± 0.05



参考基板レイアウト  
 P.C.BOARD PATTERN LAYOUT  
 (REFERENCE)

|      |       |      |    |            |    |
|------|-------|------|----|------------|----|
| 36.6 | 34.85 | 31.2 | 29 | 52610-3016 | 30 |
| 35.6 | 33.85 | 30.2 | 28 | -2916      | 29 |
| 34.6 | 32.85 | 29.2 | 27 | -2816      | 28 |
| 33.6 | 31.85 | 28.2 | 26 | -2716      | 27 |
| 32.6 | 30.85 | 27.2 | 25 | -2616      | 26 |
| 31.6 | 29.85 | 26.2 | 24 | -2516      | 25 |
| 30.6 | 28.85 | 25.2 | 23 | -2416      | 24 |
| 29.6 | 27.85 | 24.2 | 22 | -2316      | 23 |
| 28.6 | 26.85 | 23.2 | 21 | -2216      | 22 |
| 27.6 | 25.85 | 22.2 | 20 | -2116      | 21 |
| 26.6 | 24.85 | 21.2 | 19 | -2016      | 20 |
| 25.6 | 23.85 | 20.2 | 18 | -1916      | 19 |
| 24.6 | 22.85 | 19.2 | 17 | -1816      | 18 |
| 23.6 | 21.85 | 18.2 | 16 | -1716      | 17 |
| 22.6 | 20.85 | 17.2 | 15 | -1616      | 16 |
| 21.6 | 19.85 | 16.2 | 14 | -1516      | 15 |
| 20.6 | 18.85 | 15.2 | 13 | -1416      | 14 |
| 19.6 | 17.85 | 14.2 | 12 | -1316      | 13 |
| 18.6 | 16.85 | 13.2 | 11 | -1216      | 12 |
| 17.6 | 15.85 | 12.2 | 10 | -1116      | 11 |
| 16.6 | 14.85 | 11.2 | 9  | -1016      | 10 |
| 15.6 | 13.85 | 10.2 | 8  | -0916      | 9  |
| 14.6 | 12.85 | 9.2  | 7  | -0816      | 8  |
| 13.6 | 11.85 | 8.2  | 6  | -0716      | 7  |
| 12.6 | 10.85 | 7.2  | 5  | -0616      | 6  |

|            |      |      |     |     |            |      |
|------------|------|------|-----|-----|------------|------|
| 52610-**16 | 11.6 | 9.85 | 6.2 | 4   | 52610-0516 | 5    |
| MODEL NO.  | D    | (C)  | B   | (A) | MODEL NO.  | CKT. |

|  |  |              |  |                     |  |                        |                           |
|--|--|--------------|--|---------------------|--|------------------------|---------------------------|
| REVISED<br>EC NO: J2006-3196<br>DRWN: NABEI 2006/04/17<br>CHKD: TOYODA 2006/04/18<br>APPR: NUKITA 2006/04/20 | GENERAL TOLERANCES<br>(UNLESS SPECIFIED) |              | DIMENSION STYLE<br>MM ONLY   |                     | SCALE<br>---   | DESIGN UNITS<br>METRIC | THIRD ANGLE<br>PROJECTION |
|  | 10 UNDER                                 | ± 0.2        | DRAWN BY<br>TUENO  | DATE<br>'03/12/12   | TITLE<br>1.0 FPC CONNECTOR<br>I.F.F. FOR SMT. (ST.)<br>-LEAD FREE- |                        |                           |
|  | 10 OVER 30 UNDER                         | ± 0.25       | CHECKED BY<br>MSASAO   | DATE<br>'03/12/12   |  |                        |                           |
|  | 30 OVER                                  | ± 0.3        | APPROVED BY<br>MSASAO  | DATE<br>'03/12/12   | MOLEX INCORPORATED   |                        |                           |
| ANGULAR  | ± 3 °                                    | MATERIAL NO. | DOCUMENT NO.<br>SD-52610-041   | SHEET NO.<br>2 OF 2 |  |                        |                           |
| DRAFT WHERE APPLICABLE<br>MUST REMAIN<br>WITHIN DIMENSIONS   |  | SIZE<br>A3   | THIS DRAWING CONTAINS INFORMATION THAT IS PROPRIETARY TO MOLEX<br>INCORPORATED AND SHOULD NOT BE USED WITHOUT WRITTEN PERMISSION |                     |  |                        |                           |