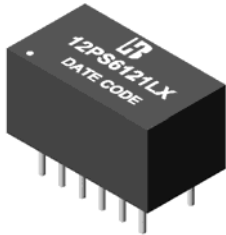


**Feature**

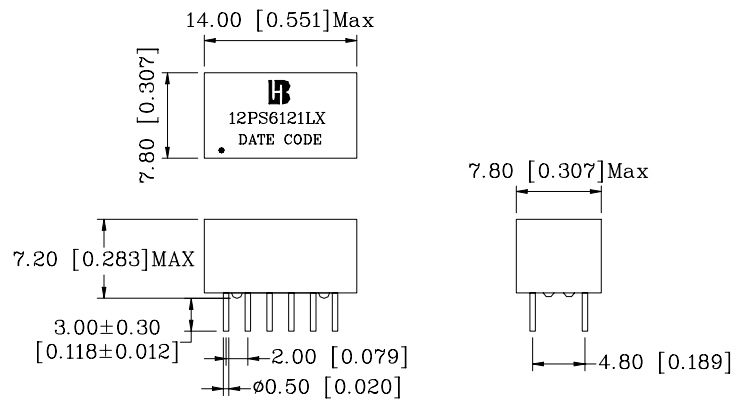
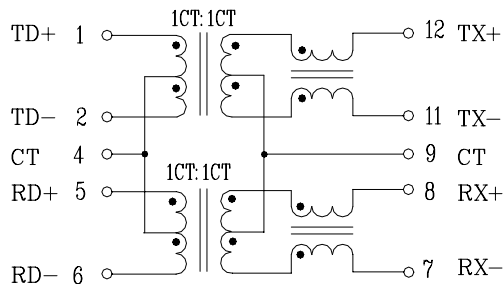


- Designed to meet IEEE 802.3u requirement, including 350uH OCL with 8mA bias.
- Symmetrical TX and RX channels for Auto MDI/MDIX capability.
- Operating temperature range: 0°C to +70°C.
- Storage temperature range: -25°C to +125°C.

Electrical Specifications @ 25°C										
Part Number	Turns Ratio (±3%)		OCL (uH Min) @100KHz/0.1V with 8mA DC Bias			C <sub>ww</sub> (pF Max)	L.L (uH Max)	DCR (Ω Max)		HI-POT (Vrms)
	TX	RX						1-2/5-6	12-11/8-7	
12PS6121LX	1CT:1CT	1CT:1CT	350			50	0.6	0.9	1.1	1500
Continue										
Part Number	Insertion Loss (dB Max)	Return Loss (dB Min)				Cross talk (dB Min)		DCMR (dB Min)		
		0.3-100MHz	0.3-30MHz	40MHz	50MHz	60-80MHz	0.3-60MHz	60-100MHz	30MHz	60MHz
12PS6121LX	-1.1	-18	-15.5	-13	-12	-45	-35	-40	-35	-30

**Schematic**

**Mechanical**



Units: mm[Inches] Tolerances: xx.x0±0.25[0.010]  
 0.xx±0.05[0.002]