

MARKING/Aufdruck

MEDER-Label, Type
Production code,
EN60062 / Factory code
Circuit diagram

MEDER-Logo, Typ
Produktionscode
EN60062/Fertigungsstätte
Schaltbild

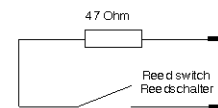
Abmessungen / dimensions (mm)
Tolerances acc. to DIN ISO2768-m

CABLE/Kabel

PVC LIYY 2x0.25 mm², grey
colour of wires: white, brown (blue/brown)
with pre-resistor 47Ohm
ends stripped and tinned

PVC LIYY 2x0.25 mm², grau
Aderfarben: weiss, braun (blau/braun)
mit Vorwiderstand 47 Ohm
Enden abisoliert und verzinkt

**CIRCUIT DIAGRAM
Schaltbild**



Magnetic properties	Conditions	Min	Typ	Max	Unit
Pull in	at 20 °C	46		83	AT
Test equipment		KMS-11			

Special Product Data	Conditions	Min	Typ	Max	Unit
Contact - form		A - NO			
Contact rating	Any DC combination of V & A not to exceed their individual max.'s			10	W
operating voltage	DC or Peak AC			180	VDC
operating ampere	DC or Peak AC			1,25	A
Switching current	DC or Peak AC			0,5	A
Sensor-resistance	measured with 40% overdrive			48,9	Ohm
Housing material		PBT glass fibre reinforced			
Case color		blue			
Sealing compound		Polyurethan			

Environmental data	Conditions	Min	Typ	Max	Unit
Operating temperature	cable not moved	-30		80	°C
Operating temperature	cable moved	-5		80	°C
Storage temperature		-30		80	°C

Cable specification	Conditions	Min	Typ	Max	Unit
Cable typ		round cable			
Cable material		PVC			
Cross section		0,25 gmm			

General data	Conditions	Min	Typ	Max	Unit
Remarks		Resistor 47 Ohm; 0,25 W; I _{max} = 70 mA			
mounting advice 1		Decreased switching distances by mounting on iron			
mounting advice 2		Magnetically conductive screws must not be used			
tightening torque	Screw M3 ISO 1207 Disk ISO 7089			0,5	Nm