

**PLEASE CHECK WWW.MOLEX.COM FOR LATEST PART INFORMATION**

**Part Number:** [0350729702](#)  
**Status:** **Active**  
**Description:** MP-Lock™ Quick Disconnect, Female, for 18-22 AWG (0.80-0.33mm<sup>2</sup>), Metal Strip, Tab 6.35 by 0.80mm (.250 by .031"), Pre-Tin Plated

**Documents:**

[Drawing \(PDF\)](#) [RoHS Certificate of Compliance \(PDF\)](#)  
[Product Specification PS-35960-001 \(PDF\)](#)

**Agency Certification**

CSA LR95446  
 UL E92853

**General**

Product Family Quick Disconnects  
 Series [35072](#)  
 Crimp Quality Equipment Yes  
 Product Name MP-Lock™  
 Type Quick Disconnect

**Physical**

Barrel Type Open  
 Gender Female  
 Glow-Wire Compliant No  
 Insulation None  
 Lock to Mating Part Yes  
 Material - Metal Brass  
 Material - Plating Mating Tin  
 Material - Plating Termination Tin  
 Orientation Straight  
 Packaging Type Reel  
 Plating min: Mating (µin) 32.00  
 Plating min: Mating (µm) 0.800  
 Plating min: Termination (µin) 32.00  
 Plating min: Termination (µm) 0.80  
 Polarized to Mating Part Yes  
 Tab Thickness 0.81mm (.032")  
 Tab Width 6.35mm (.250")  
 Temperature Range - Operating -40°C to +105°C  
 Termination Interface: Style Crimp or Compression  
 Wire Insulation Diameter 1.50-3.20mm (.060-.125") max.  
 Wire Size AWG 18, 20, 22  
 Wire Size mm<sup>2</sup> 0.33 - 0.80

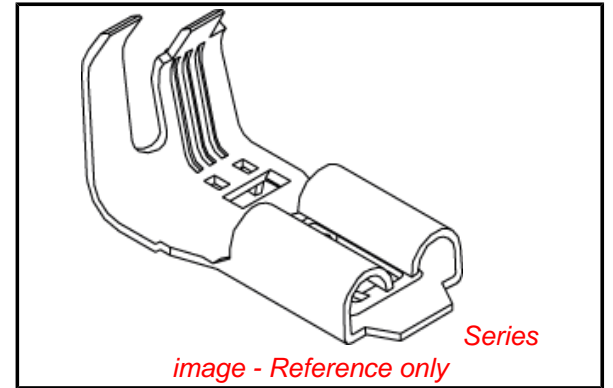
**Electrical**

Voltage - Maximum 300V

**Material Info**

**Reference - Drawing Numbers**

Product Specification PS-35960-001  
 Sales Drawing SD-35072-9702



**EU RoHS**

**ELV and RoHS Compliant**  
**REACH SVHC Contains SVHC: No**  
**Halogen-Free Status**

**China RoHS**



**Need more information on product environmental compliance?**

Email [productcompliance@molex.com](mailto:productcompliance@molex.com)  
 For a multiple part number RoHS Certificate of Compliance, [click here](#)

Please visit the [Contact Us](#) section for any non-product compliance questions.

**Search Parts in this Series**

[35072Series](#)

**Use With**

[35196](#) , [35959](#)

**Application Tooling | FAQ**

*Tooling specifications and manuals are found by selecting the products below. Crimp Height Specifications are then contained in the Application Tooling Specification document.*

**Global**

Description	Product #
Hand Crimp Tool for .250 MP-Lock Crimp Terminals	<a href="#">0638196300</a>
Extraction Tool for MP-Lock™ Quick Disconnect	<a href="#">0638135500</a>

**Japan**

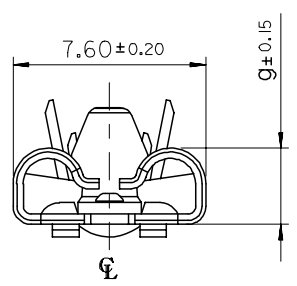
Description	Product #
End-Feed Applicator	<a href="#">0573693100</a>

This document was generated on 04/15/2010

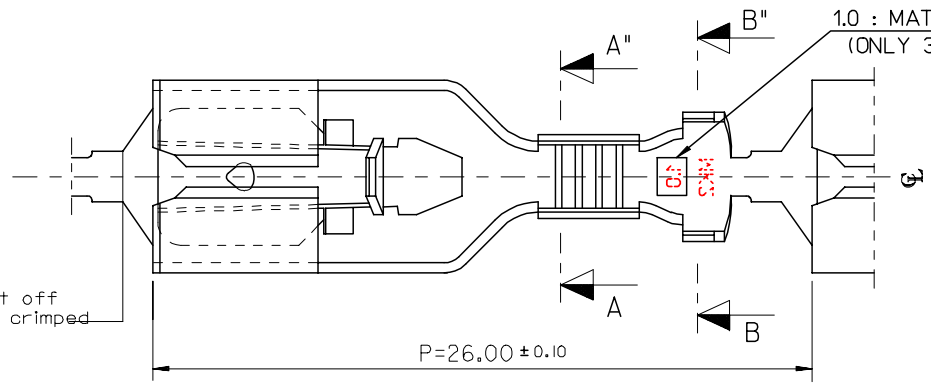
**PLEASE CHECK [WWW.MOLEX.COM](http://WWW.MOLEX.COM) FOR LATEST PART INFORMATION**

DWG. NO. SD-35072-9702  
 PROJECT NO.  
 SIMILAR ITEM  
 DO NOT SCALE DRAWING DIMENSION IN METRIC

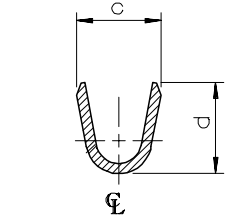
8 7 6 5 4 3 2 1



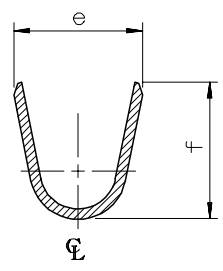
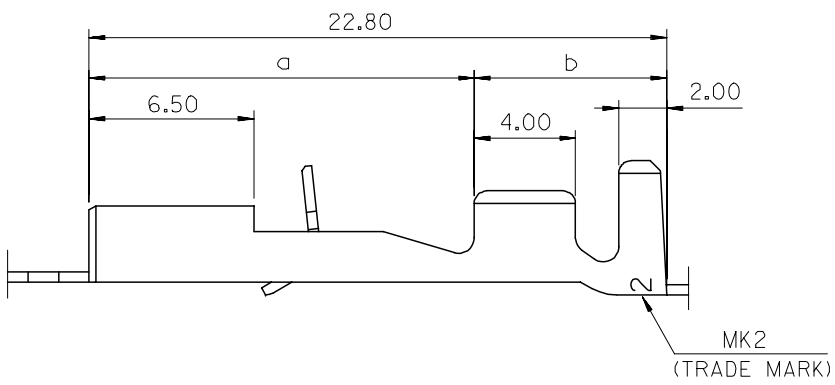
This part is cut off when wires are crimped



1.0 : MATED TAB THICK'  
(ONLY 35072-9712)



SECTION:A-A'



SECTION:B-B'

ENG.NO.	a	b	c	d	e	f	g	WIRE SIZE	INSUL.DIA.	MATING TAB THICK'
35072-9702	15.1	7.7	2.6	3.2	4.8	4.8	2.92	AWG#22-18	1.5-3.1	0.8 t
35072-9802	15.1	7.7	3.7	3.6	5.0	5.5		AWG#18-14	2.2-3.4	
35072-9902	14.4	8.4	4.6	5.4	6.8	6.2		AWG#14-10	3.0-5.1	
35072-9712	15.1	7.7	2.6	3.2	4.8	4.8	3.00	AWG#22-18	1.5-3.1	1.0 t

- NOTES
- MATERIAL: TIN-PLATED BRASS 0.4mm THICK'
  - APPLICABLE HOUSING: 35196-0110
  - MATING TAB WIDTH : 6.35mm

REDRAWN ECN NO. KOR2006-0031 DRWN: J.B.JIN 05/08/30 CHK: W.Y.YANG APPR: C.W.LEE	DESCRIPTION MAJOR CRITICAL C=0	QUALITY SYMBOLS	GENERAL TOLERANCES: (UNLESS SPECIFIED)	SCALE 5:1	DESIGN UNITS <input checked="" type="checkbox"/> mm <input type="checkbox"/> INCH	THIRD ANGLE <input checked="" type="checkbox"/> mm <input type="checkbox"/> INCH <input type="checkbox"/> mm ONLY	SHT REV
		4 PLACES ±0.    ±- 3 PLACES ±0.    ±- 2 PLACES ±0.30 ±- 1 PLACE ±0.30 ±-	ANGULAR: ± 1 °	DRAWN BY & DATE W.Y.YANG 96/03/19	TITLE: .250 MP-LOCK RECEPTACLE TERMINAL		REVISE ON CAD ONLY
		DRAFT WHERE APPLICABLE MUST REMAIN WITHIN DIMENSIONS	APPROVED BY & DATE C.W.LEE 96/03/19	MOLEX INCORPORATED		SHEET NO. 1 OF 1	

CAD FILENAME: W.Y.YANG 93/03/19  
 MATERIAL NO. SEE TABLE  
 DRAWING NO. SD-35072-9702  
 THIS DRAWING CONTAINS INFORMATION THAT IS PROPRIETARY TO MOLEX INCORPORATED AND SHOULD NOT BE USED WITHOUT WRITTEN PERMISSION.  
 SIZE B  
 KOREA MX-A3

8 7 6 5 4 3 2 1 KOREA MX-A3