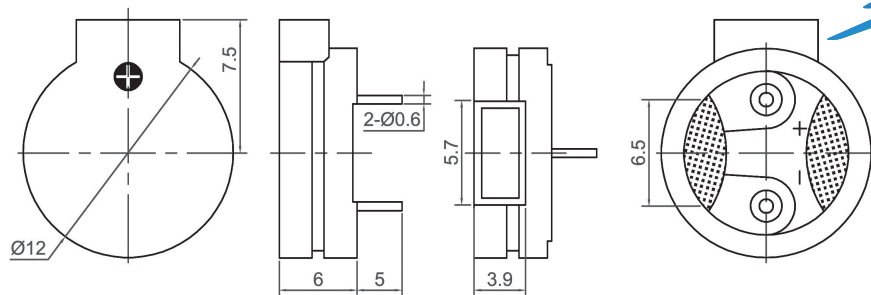
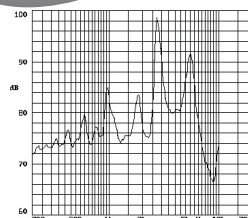


Magnetic Transducer (AC)



CMT1206-X

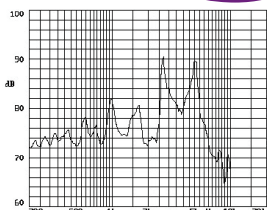
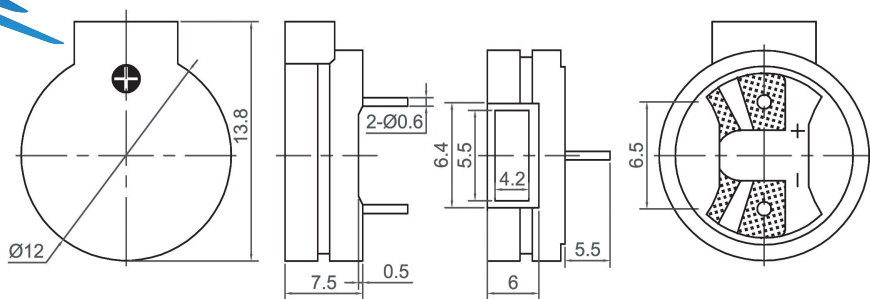
Canopus Part no.	Operating Voltage (V)	Rated Voltage (V)	Max Rated Current (mA)	Coil Resistance (Ω)	Min Sound Output (dBA)	Resonant Frequency (Hz)	Operating Temperature ($^{\circ}$ C)	Housing	Weight (g)
CMT1206A2400NPX	1 ~ 2	1.5	70	6.5 ± 1	90 at 10cm	2400	-20 ~ +60	Noryl	1.5
CMT1206A2700NPX	1 ~ 2	1.5	70	5 ± 15	85 at 10cm	2700	-25 ~ +70	Noryl	2
CMT1206A2731NPX	1 ~ 2	1.5	70	6.5 ± 1	85 at 10cm	2731	-25 ~ +70	Noryl	2



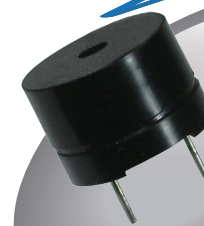
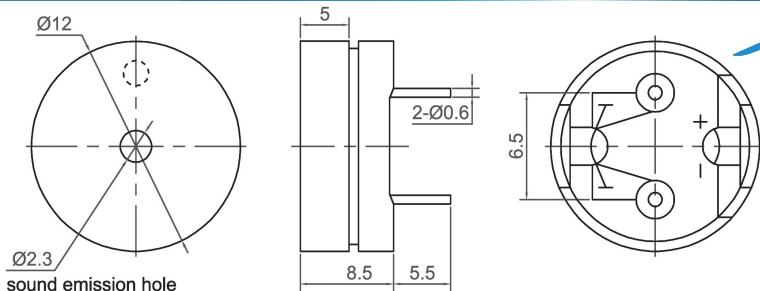
CANOPUS



CMT1207-X

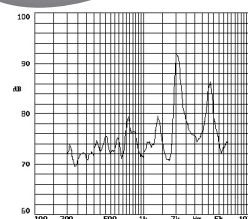


Canopus Part no.	Operating Voltage (V)	Rated Voltage (V)	Max Rated Current (mA)	Coil Resistance (Ω)	Min Sound Output (dBA)	Resonant Frequency (Hz)	Operating Temperature ($^{\circ}$ C)	Housing	Weight (g)
CMT1207A2048NPX-50R	1 ~ 2	1.5	10	50 ± 7.5	70 at 10cm	2048	-20 ~ +60	Noryl	2
CMT1207A2048NPX-6R	1 ~ 3	1.5	80	6.5 ± 1	85 at 10cm	2048	-20 ~ +60	Noryl	2
CMT1207A2731NPX-6R	1 ~ 2	1.5	70	6.5 ± 1	85 at 10cm	2731	-20 ~ +60	Noryl	2



CMT1208

Canopus Part no.	Operating Voltage (V)	Rated Voltage (V)	Max Rated Current (mA)	Coil Resistance (Ω)	Min Sound Output (dBA)	Resonant Frequency (Hz)	Operating Temperature ($^{\circ}$ C)	Housing	Weight (g)
CMT1208A2048NP-16R	1 ~ 5	1.5	30	16 ± 4.5	85 at 10cm	2048	-20 ~ +60	Noryl	2
CMT1208A2048NP-42R	1 ~ 5	1.5	15	42 ± 51	80 at 10cm	2048	-20 ~ +60	Noryl	2
CMT1208A2048NP-50R	1 ~ 5	1.5	20	50 ± 7.5	80 at 10cm	2048	-20 ~ +60	Noryl	2
CMT1208D2096NP	1 ~ 5	1.5	15	42 ± 4.5	80 at 10cm	2096	-20 ~ +60	Noryl	2
CMT1208D2048NP	1 ~ 5	3.6	60	16 ± 4.5	85 at 10cm	2048	-20 ~ +85	Noryl	2



Your Efficient Supplier
www.canopus.com.hk

TEL.: (852) 2806 2812

Fax: (852) 2652 2216