

PLEASE CHECK WWW.MOLEX.COM FOR LATEST PART INFORMATION

Part Number: [0850480000](#)
Status: **Active**
Overview: [din_41612](#)
Description: 2.54mm (.100") Pitch DIN 41612/IEC 603-2 Mixed Layout Connector, Through Hole, Vertical, Female Style M, 24 Circuits

Documents:

[Drawing \(PDF\)](#) [RoHS Certificate of Compliance \(PDF\)](#)

Agency Certification

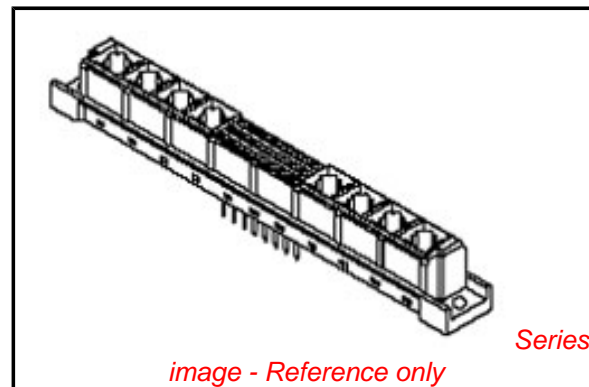
CSA LR19980
 UL E29179

General

Product Family Backplane Connectors
 Series [85048](#)
 Application Daughtercard
 Comments Mixed Layout
 Component Type PCB Receptacle
 Overview [din_41612](#)
 Product Name IEC 603-2/DIN 41612
 Style M

Physical

Circuits (Loaded) 24
 Circuits (maximum) 24
 Circuits Detail Rows A & C
 Durability (mating cycles max) 400
 First Mate / Last Break No
 Flammability 94V-0
 Guide to Mating Part No
 Keying to Mating Part Yes
 Material - Metal Copper Alloy
 Material - Plating Mating Gold
 Material - Plating Termination Tin
 Number of Columns 8
 Number of Pairs Open Pin Field
 Number of Rows 3
 Orientation Vertical
 PC Tail Length (in) 0.177 In
 PC Tail Length (mm) 4.50 mm
 PCB Locator No
 PCB Retention Yes
 Packaging Type Carton
 Pitch - Mating Interface (in) 0.100 In
 Pitch - Mating Interface (mm) 2.54 mm
 Pitch - Term. Interface (in) 0.100 In
 Pitch - Term. Interface (mm) 2.54 mm
 Plating min: Mating (µin) 24
 Plating min: Mating (µm) 0.60
 Polarized to PCB Yes
 Stackable No
 Surface Mount Compatible (SMC) No
 Temperature Range - Operating -55°C to +125°C
 Termination Interface: Style Through Hole



EU RoHS **China RoHS**

Compliance Status

Not Reviewed

REACH SVHC

Not Reviewed

Halogen-Free

Status

Not Reviewed

Need more information on product environmental compliance?

Email productcompliance@molex.com
 For a multiple part number RoHS Certificate of Compliance, [click here](#)

Please visit the [Contact Us](#) section for any non-product compliance questions.

Search Parts in this Series

[85048Series](#)

Mates With

DIN 41612/EIC 603-2 Mixed Layout Connector [85009](#) , [85017](#)

Electrical

Current - Maximum per Contact

1A

Data Rate

622.0 Mbps

Voltage - Maximum

250V AC (RMS)

Material Info**Reference - Drawing Numbers**

Packaging Specification

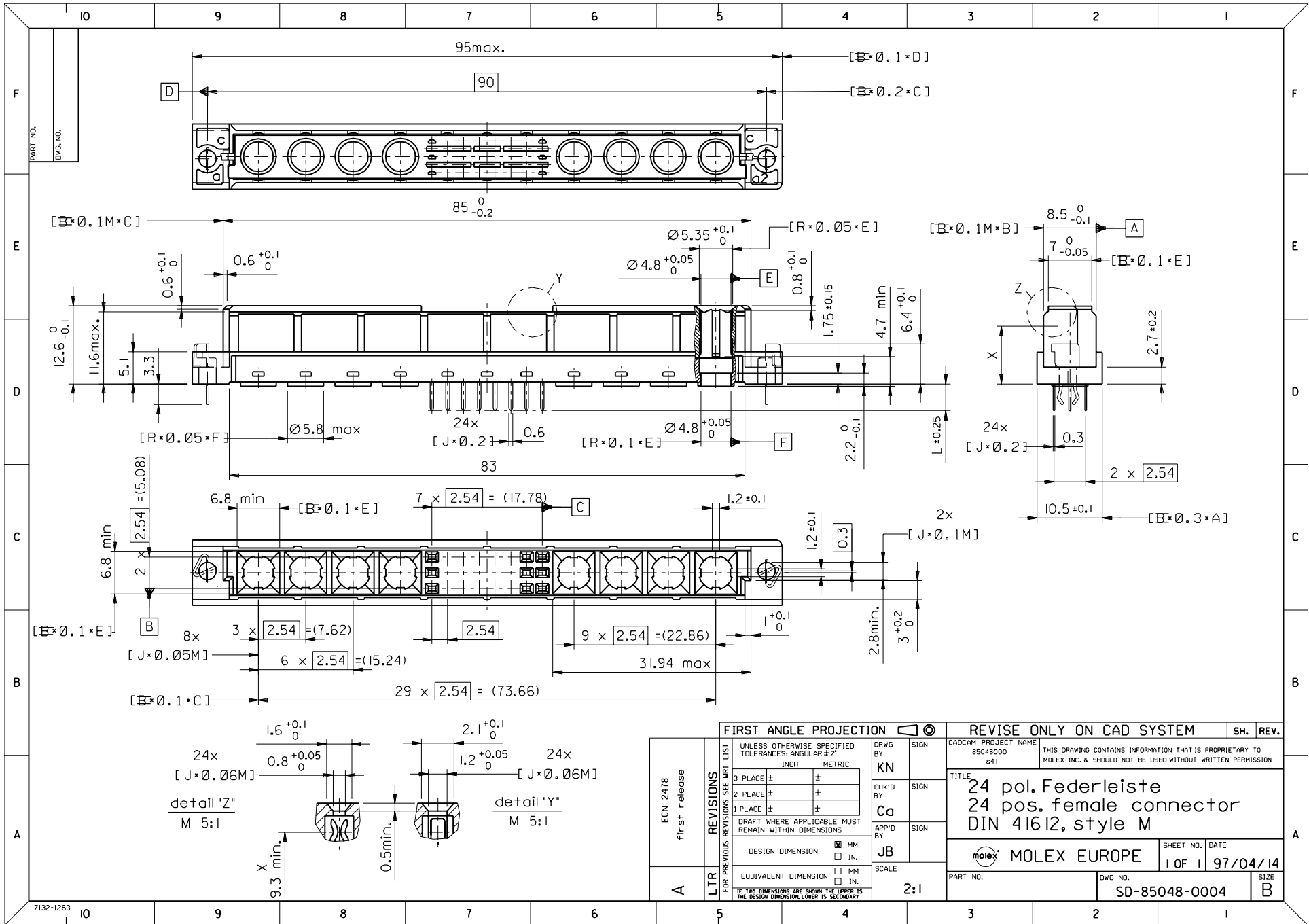
PK-85048-001

Sales Drawing

SD-85048-0000, SD-85048-0004

This document was generated on 05/17/2010

PLEASE CHECK WWW.MOLEX.COM FOR LATEST PART INFORMATION



FIRST ANGLE PROJECTION REVISE ONLY ON CAD SYSTEM SH. REV.

| | | | |
|---|--|----------|------|
| UNLESS OTHERWISE SPECIFIED TOLERANCES: ANGULAR ±2° | | DRWG BY | SIGN |
| INCH METRIC | | KN | |
| 3 PLACE ± | ± | CHK'D BY | SIGN |
| 2 PLACE ± | ± | Ca | |
| 1 PLACE ± | ± | APP'D BY | SIGN |
| DRAFT WHERE APPLICABLE MUST REMAIN WITHIN DIMENSIONS | | JB | |
| DESIGN DIMENSION | <input checked="" type="checkbox"/> MM | SCALE | |
| | <input type="checkbox"/> IN. | 2:1 | |
| EQUIVALENT DIMENSION | <input type="checkbox"/> MM | | |
| | <input type="checkbox"/> IN. | | |
| IF TWO DIMENSIONS ARE SHOWN THE UPPER IS THE DESIGN DIMENSION, LOWER IS SECONDARY | | | |

| | | |
|---|-----------------|---|
| CAD/CAM PROJECT NAME | 85048000 841 | THIS DRAWING CONTAINS INFORMATION THAT IS PROPRIETARY TO MOLEX INC. & SHOULD NOT BE USED WITHOUT WRITTEN PERMISSION |
| TITLE | | |
| 24 pol. Federleiste 24 pos. female connector DIN 41612, style M | | |
| MOLEX EUROPE | | SHEET NO. DATE 1 OF 1 97/04/14 |
| PART NO. | DWG NO. | SIZE |
| SD-85048-0004 | | B |

| | |
|----------|---------------|
| ECN 2478 | first release |
| LTR | REVISIONS |
| A | |

