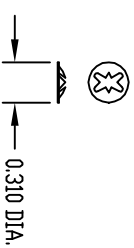
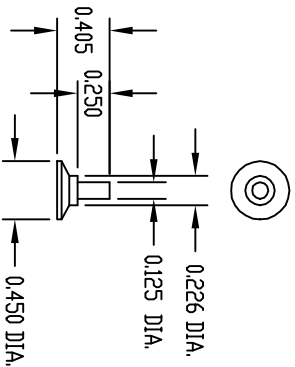


PART NAME MOUNTING BOSS KIT

PART No.

PMB-11282

MATERIAL: HIGH-IMPACT PLASTIC  
 FINISH: PC BONE GRAY  
 FOUR (4) BOSSES & FOUR (4) CLIPS  
 SUPPLIED WITH EACH KIT.



#C10262-010 REF.

PART NAME ADAPTER BRACKET

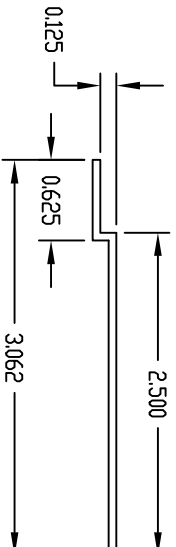
PART No.

AB-1851 TD AB-1856

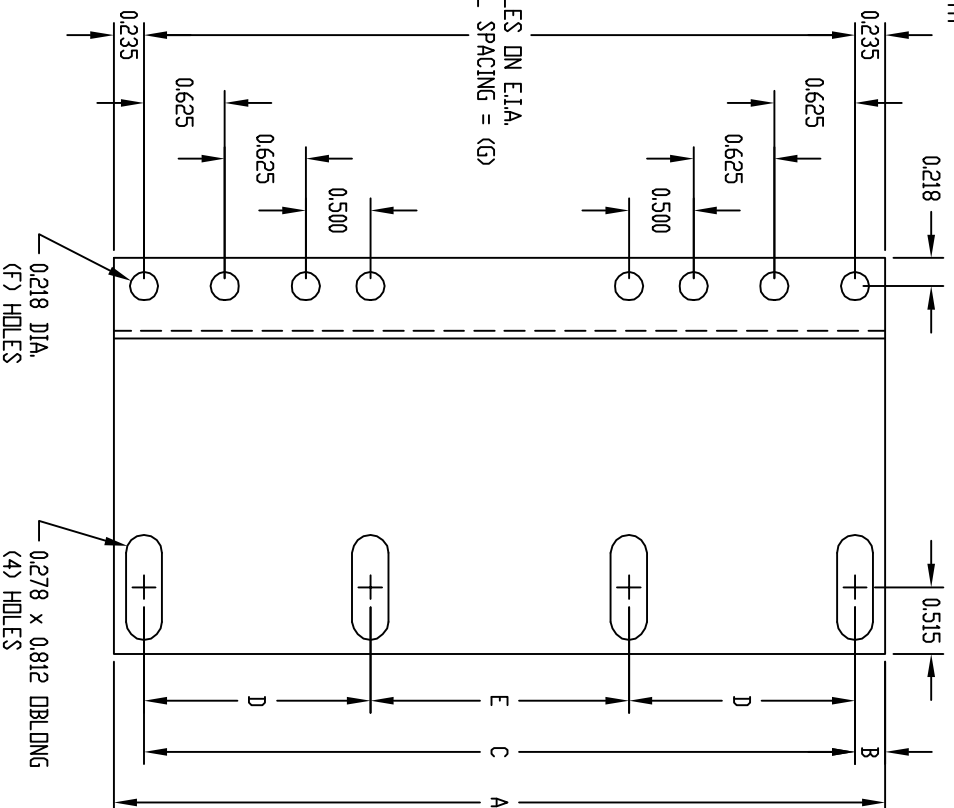
MATERIAL: 16 GA. STEEL

FINISH: SMOOTH BLACK

BRACKETS ARE PACKAGED IN PAIRS.  
 BRACKETS ARE USED FOR MOUNTING  
 19" WIDE EQUIPMENT INTO OPEN  
 RELAY RACKS WITH 23" AND 24"  
 WIDE PANEL SPACES AND  
 ENCLOSED CABINET RACKS WITH  
 24" WIDE PANEL SPACES.



(F) HOLES ON E.I.A.  
 UNIVERSAL SPACING = (G)



PART NO.	PANEL SPACE A	B	C	D	E	F QTY.	G
AB-1851	1.750	0.235	1.250			(3)	1.250
AB-1852	3.500	0.235	3.000			(6)	3.000
AB-1853	5.250	1.485	2.250			(9)	4.750
AB-1854	7.000	1.485	4.000			(12)	6.500
AB-1855	8.750	1.485	5.750			(15)	8.250
AB-1856	10.500	1.485	7.500	2.250	3.000	(18)	10.000