

MICRO

ELECTRONICS

MG457A/C

0.56" FOUR
DIGIT, GREEN
LED DISPLAYS

FEATURES:

Low Cost

Low Power Requirements

High Contrast

Wide Viewing Angle

Common Anode : MG457A

Common Cathode : MG457C

ABSOLUTE MAXIMUM RATINGS

Power Dissipation / Segment	75mW
Peak Forward Current / Segment (Pulse Width \leq 1mS , Duty Ratio = 1/10)	100mA
Continuous Forward current / Segment	25mA
Revers Voltage / Segment	5V
Operation Temperature Range	-25°C TO +85°C
Storage Temperature Range	-25°C TO +85°C
Solder Temperature (1/16 Inch from body)	260°C
Maximum Soldering Time(\leq 260°C)	5 sec

ELECTRO-OPTICAL CHARACTERISTICS (Ta = 25°C)

PARAMETER	SYMBOL	VALUE	UNIT	CONDITIONS	
Average Luminous Intensity	MIN	IV	1000	μ cd	IF= 10mA
	TYP		1500	μ cd	IF= 10mA
Luminous Intensity Matching Ratio	MAX	2:1			IF= 20mA
Forward Voltage Any Segment	TYP	VF	2.2	V	IF=20mA
	MAX		3.0	V	IF=20mA
Reverse Current Any Segment	MAX	IR	100	μ A	VR=5V
Peak Wavelength	TYP	λ_p	570	nm	IF= 20mA
Spectral Line Half-Width	TYP	$\Delta\lambda$	30	nm	IF= 20mA



MICRO ELECTRONICS LTD.

7/F, Enterprise Square Three, 39 Wang Chiu Road, Kowloon Bay, Kowloon, Hong Kong.

TEL: (852) 23430181 FAX: (852) 23410321

HOME PAGE: <http://www.microelectr.com.hk>

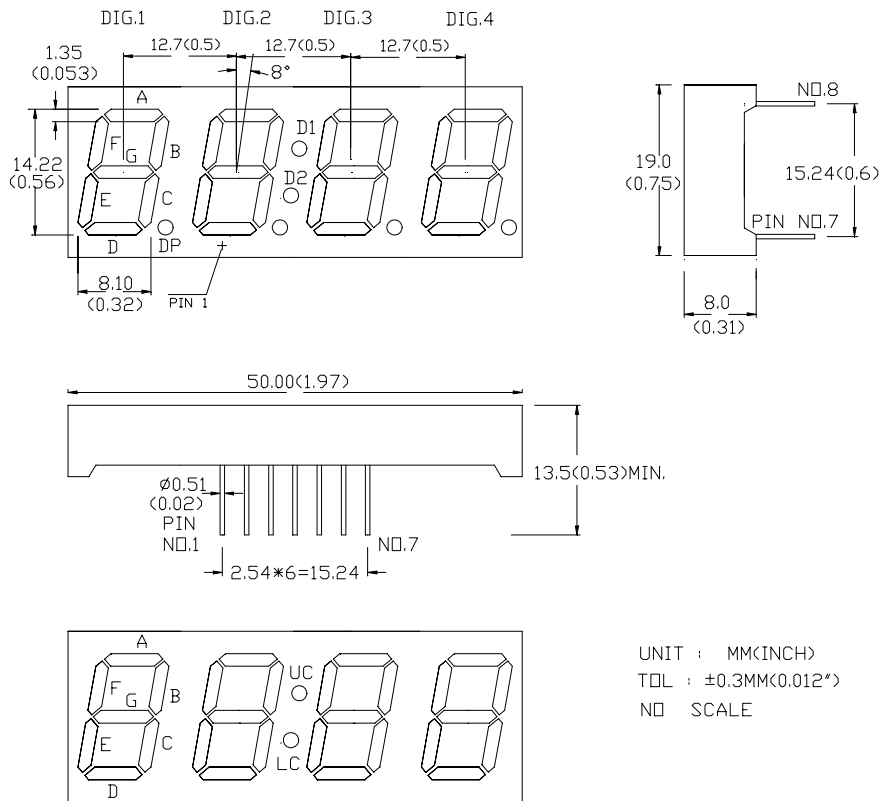
美科有限公司

REV:A

06.6.19

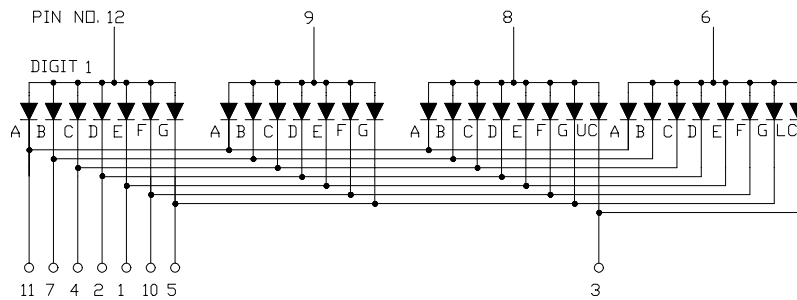
MG457A/C(REV : A)

MECHANICAL OUTLINE:



CIRCUIT DIAGRAM:

(A) COMMON ANODE: MG457A



(B) COMMON CATHODE: MG457C

