

PLEASE CHECK WWW.MOLEX.COM FOR LATEST PART INFORMATION

Part Number: [0359570610](#)
Status: **Planned for Obsolescence**
Description: 2.79mm (.110") Width Tab Receptacle Housing, 6 Circuits

Documents:

[Drawing \(PDF\)](#) [RoHS Certificate of Compliance \(PDF\)](#)
[Product Specification PS-35957-001 \(PDF\)](#)

General

Product Family Crimp Housings
 Series [35957](#)
 Product Name N/A

Physical

Circuits (maximum) 6
 Color - Resin Natural
 Gender Female
 Glow-Wire Compliant No
 Lock to Mating Part Yes
 Material - Resin Nylon
 Number of Rows 2
 Packaging Type Bag
 Panel Mount No
 Pitch - Mating Interface (in) 0.157 In
 Pitch - Mating Interface (mm) 4.00 mm
 Polarized to Mating Part Yes
 Stackable No
 Temperature Range - Operating -40°C to +105°C

Electrical

Current - Maximum per Contact 10A

Material Info

Reference - Drawing Numbers

Product Specification PS-35957-001
 Sales Drawing SD-35957-0610

EU RoHS
ELV and RoHS
Compliant
REACH SVHC
 Not Reviewed
Halogen-Free
Status
Halogen-Free

China RoHS



Need more information on product environmental compliance?

Email productcompliance@molex.com
 For a multiple part number RoHS Certificate of Compliance, [click here](#)

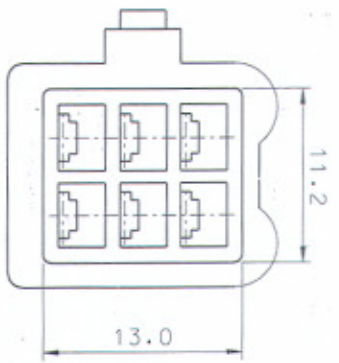
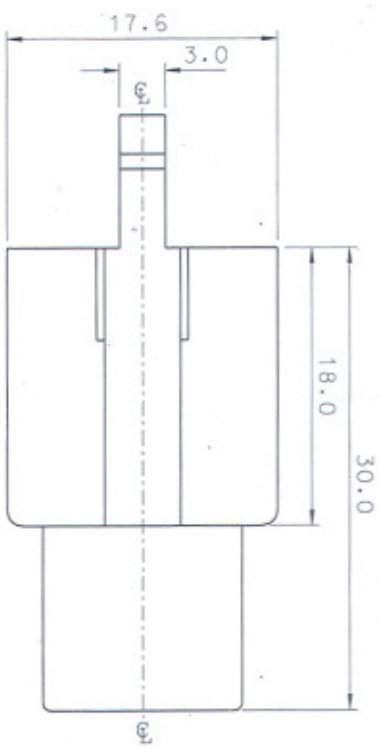
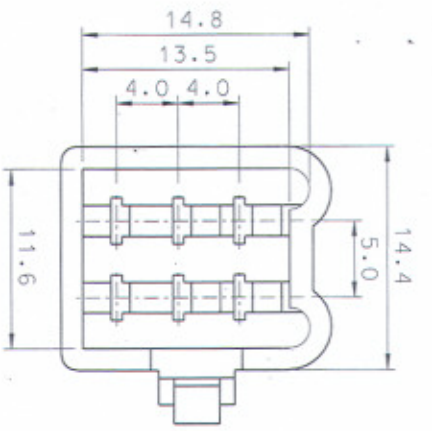
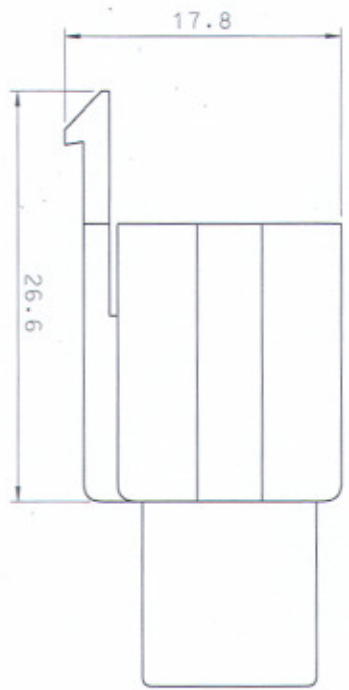
Please visit the [Contact Us](#) section for any non-product compliance questions.

Search Parts in this Series
[35957Series](#)

Mates With
 Tab Receptacle Housing [35957](#)

Use With
 Quick Disconnect [35711](#)

8 7 6 5 4 3 2 1



NOTES
 1. MATERIAL : NYLON 66 (UL94V-2)
 2. COLOR : NATURAL

MATERIAL				SEE NOTES			
GENERAL TOLERANCE				±0.3			
ANGLE :				±1°			
DIMENSION CLASSIFICATION				▽ : CRITICAL ▲ : MAJOR () : REFERENCE			
ASS'Y. PART				TITLE :			
DESCRIPTION ENG. NO.				.110 W/W CONN'			
REVISE ONLY ON CAD SYSTEM				RECEPTACLE HSG-6P			
LTR REVISION RECORD				SHEET			
A NEW RELEASED				1 of 1			
ECN				REV			
DATE				A			
96.4.29				SD 35957-0610			

MOLEX MOLEX-KOREA CO.,LTD.

DRAWN BY J.S.KANG
 APP'D BY h.l. Cho
 SCALE 3/1