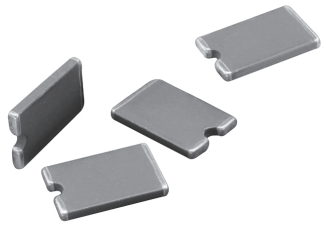


## Surface Mount Inductors, Low Profile for DC/DC Converters



### FEATURES

- Low profile 0.047" [1.19mm] maximum thickness.
- Self shielding.
- Surface mountable.
- High Q for high efficiency.
- Excellent energy storage.
- Monolithic, ferrite construction.
- Terminals designed for maximum trace EMI and compact circuit design.
- Patents obtained.

### APPLICATIONS

Low profile DC/DC converters.  
Type I PCMCIA.  
Hand held electronics.  
Flat panel displays.

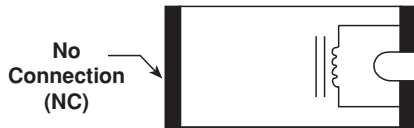
### ELECTRICAL SPECIFICATIONS

**Inductance Range:** 4.7 $\mu$ H to 10 $\mu$ H.

**Inductance Tolerance:**  $\pm$  20%.

**Temperature Range:** - 40°C to + 85°C.

### SCHEMATIC

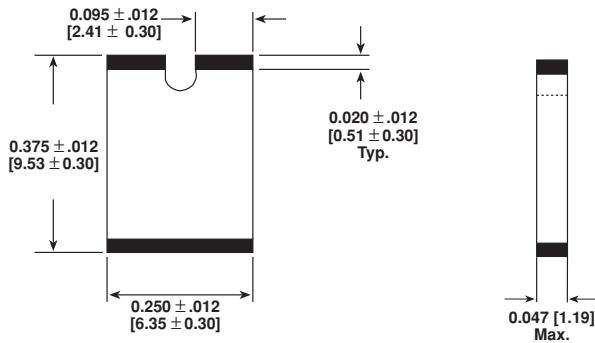


### STANDARD ELECTRICAL SPECIFICATIONS

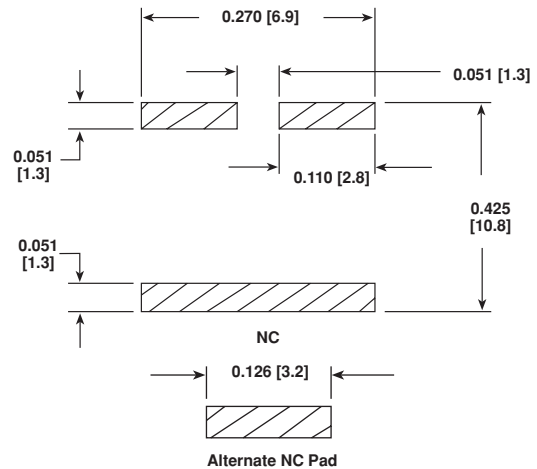
MODEL	IND. ( $\mu$ H) $\pm$ 20% @ 10kHz w/600mA DC	Q @ 500 kHz (Min.)	SELF RESONANT FREQ. MIN. (MHz)	DCR MAX. (Ohms)	RATED DC CURRENT (mA)
ILS-3825- 01	10.0	20	9	0.65	1,000
ILS-3825- 03	4.7	18	13	0.45	1,200

### DIMENSIONS in inches [millimeters]

#### DIMENSIONAL OUTLINE



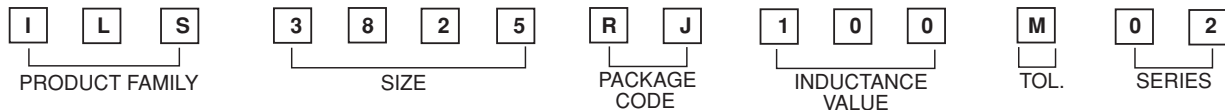
#### PAD LAYOUT



### DESCRIPTION

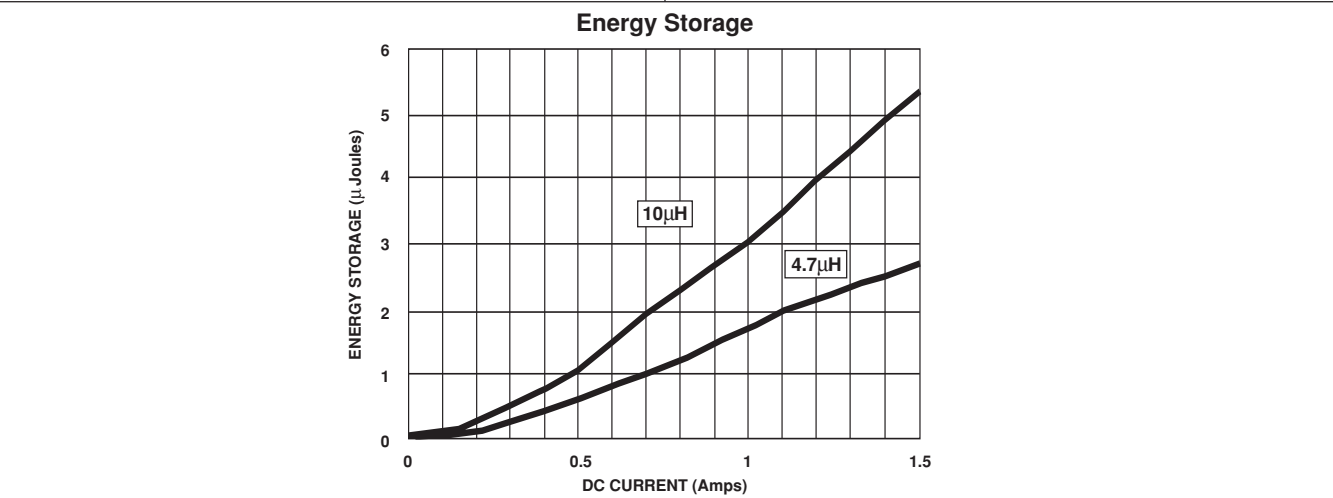
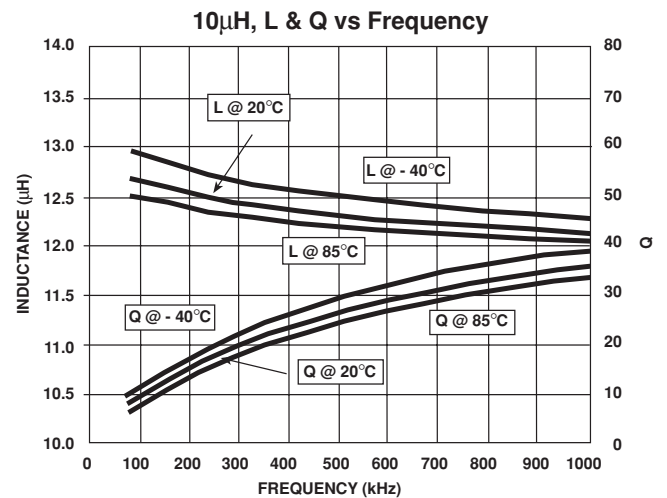
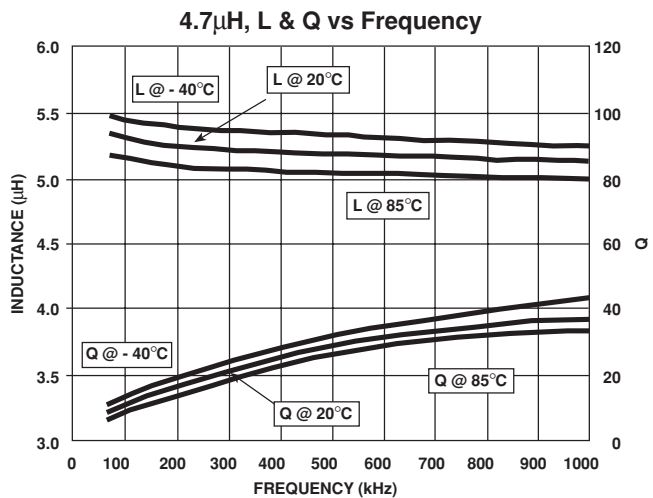
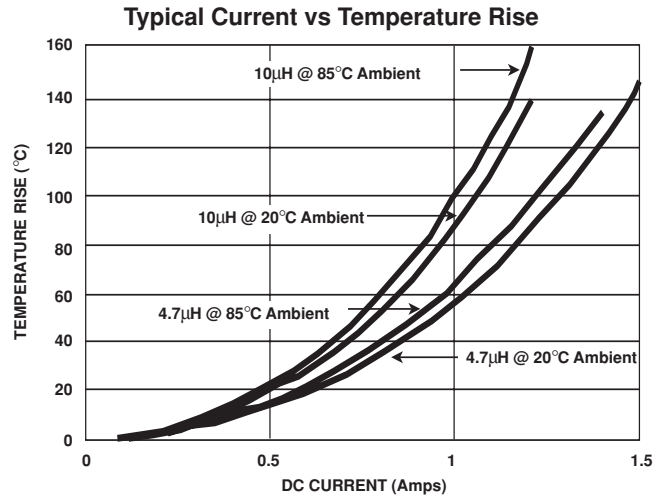
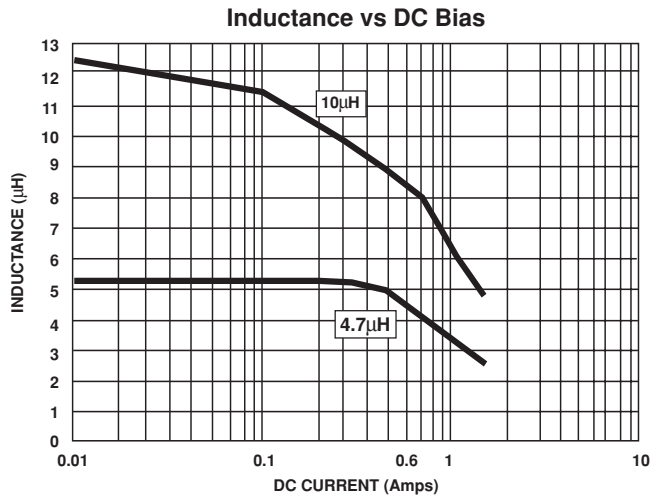
ILS-3825 MODEL	10 $\mu$ H INDUCTANCE VALUE - 01 (10 $\mu$ H) - 03 (4.7 $\mu$ H)	$\pm$ 20% INDUCTANCE TOLERANCE
-------------------	---	--------------------------------------

### SAP PART NUMBERING GUIDELINES (INTERNAL)



See the end of this data book for conversion tables

**PERFORMANCE GRAPHS**



**PACKAGING OPTIONS**

- Tape and Reel:  
Embossed plastic carrier tape.  
Per EIA481-1.  
2000 pieces on a 13" [330mm] reel.