

KLP-343W-XX

KLP-343W is a High Bright White LED with 3 InGaN LEDs.

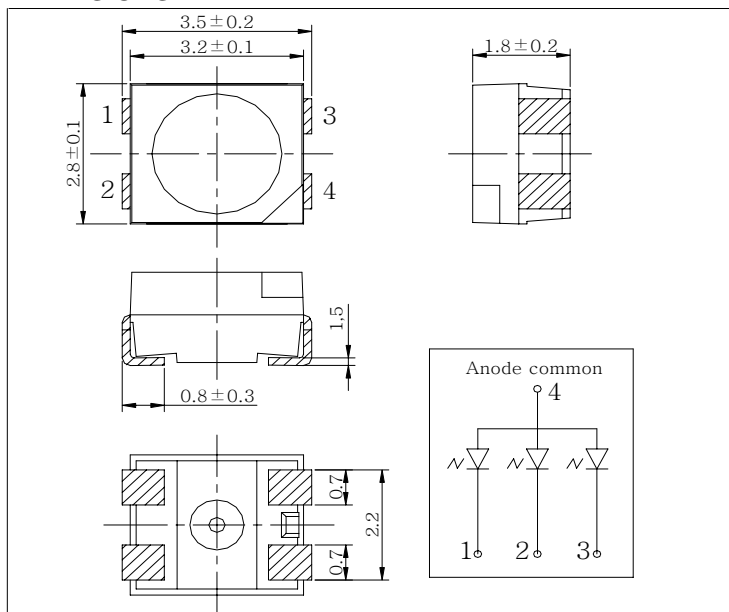
Features

- Epoxy Encapsulant mixed with Phospor
- High Optical Output

Applications

- Display
- Indicator
- Hand Phone Camera Flash
- Lighting

DIMENSIONS



Maximum Ratings

[Ta=25°C]

Parameter	Symbol	Ratings	Unit
Reverse Voltage	V_R	5	V
Forward current	I_F	90	mA
Pulse forward current ^{*1}	I_{FP}	0.3	A
Power dissipation	P_D	270	mW
Operating temperature	$T_{opr.}$	-30 ~ +85	°C
Storage temperature	$T_{stg.}$	-40 ~ +105	°C
Soldering Temperature ^{*2}	$T_{sol.}$	260	°C

*1. I_{FP} Measured under duty $\frac{1}{10}$ @ 1KHz

*2. Soldering time \leq 5 Sec

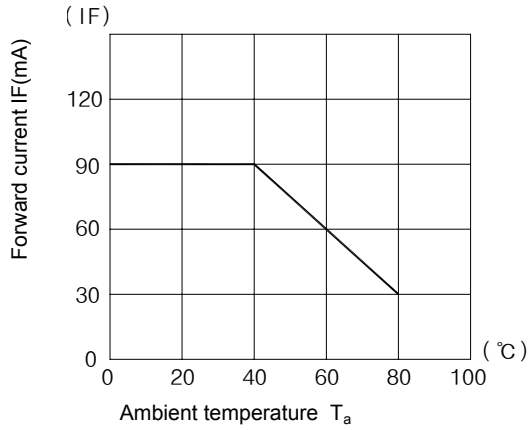
Electro-Optical Characteristics

[Ta=25°C]

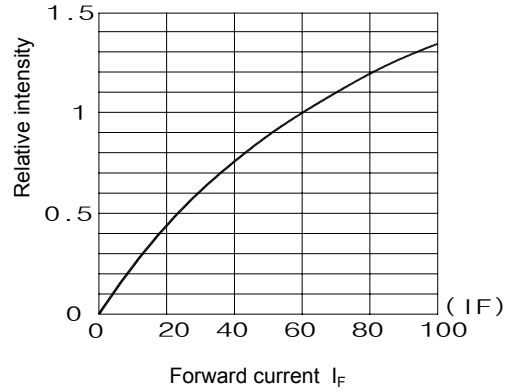
Parameter	Symbol	Conditions	Min	Typ	Max	Unit
Forward voltage	V_F	$I_F = 60 \text{ mA}$	-	3.2	-	V
Reverse Current	I_R	$V_R = 5V$	-	-	10.0	mA
Optical Output Power	P_o	$I_F = 60 \text{ mA}$	18.00	26.00	-	mW
	I_v		3.5	4.0	-	Cd
Color Coordinate	x	$I_F = 60 \text{ mA}$	0.28	-	0.32	
	y		0.29	-	0.34	
Luminence	L_m	$I_F = 60 \text{ mA}$	-	7.5	-	lm
Half angle	$\Delta\theta$	$I_F = 60 \text{ mA}$	-	120	-	deg.

KLP-343W-XX

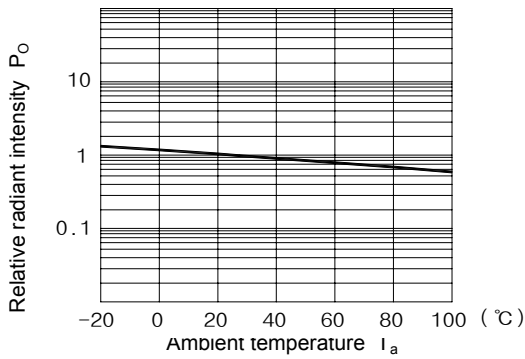
Forward current vs. Ambient temperature



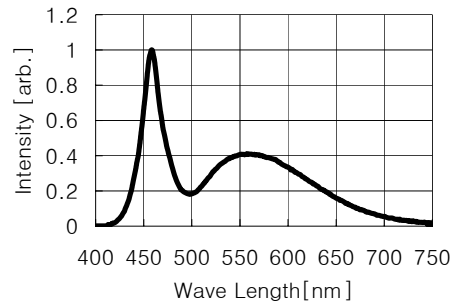
Radiant Intensity vs. Forward current



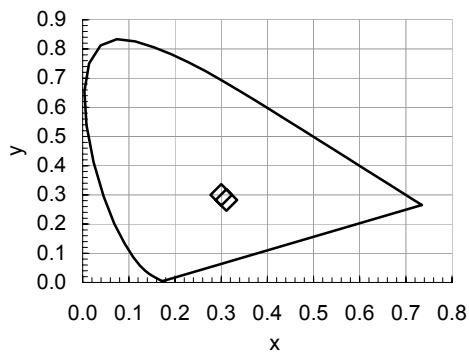
Relative radiant intensity vs. Ambient temperature



Relative intensity vs. Wavelength



Color Coordinate



Radiant Pattern
Angle(deg)

