

PLEASE CHECK WWW.MOLEX.COM FOR LATEST PART INFORMATION

Part Number: **0503978000**
Status: **Active**
Description: 2.50mm (.098") Pitch Crimp Terminal, 50397, Reel

Documents:

3D Model	Product Specification PS-51111-002 (PDF)
Drawing (PDF)	Product Specification PS-51111-003 (PDF)
Product Specification PS-51111-001 (PDF)	RoHS Certificate of Compliance (PDF)

General

Product Family	Crimp Terminals
Series	50397
Crimp Quality Equipment	Yes
Product Name	N/A

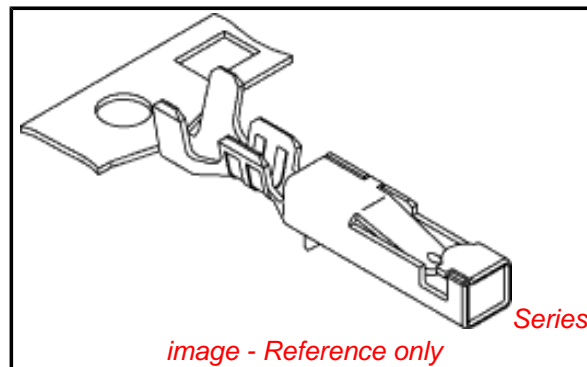
Physical

Gender	Female
Material - Metal	Phosphor Bronze
Material - Plating Mating	Tin
Material - Plating Termination	Tin
Packaging Type	Reel
Plating min: Mating (µin)	36
Plating min: Mating (µm)	0.90
Plating min: Termination (µin)	36
Plating min: Termination (µm)	0.90
Termination Interface: Style	Crimp or Compression
Wire Insulation Diameter	1.15-1.80mm (.045-.071")
Wire Size AWG	22, 24, 26, 28
Wire Size mm ²	N/A

Material Info

Reference - Drawing Numbers

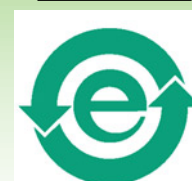
Product Specification	PS-51111-001, PS-51111-002, PS-51111-003, RPS-500592-001, RPS-500592-002, RPS-500592-003, RPS-51111-001, RPS-51111-004, RPS-51111-005, RPS-51111-006, RPS-51111-007, RPS-51112-003
Sales Drawing	SD-50397-001



EU RoHS

**ELV and RoHS
Compliant**
**REACH SVHC
Contains SVHC: No**
**Halogen-Free
Status**
Halogen-Free

China RoHS



**Need more information on product
environmental compliance?**

Email productcompliance@molex.com
 For a multiple part number RoHS Certificate of
 Compliance, [click here](#)

Please visit the [Contact Us](#) section for any
 non-product compliance questions.

Search Parts in this Series

50397Series

Mates With

50398

Use With

51111

Application Tooling | FAQ

*Tooling specifications and manuals are
 found by selecting the products below.
 Crimp Height Specifications are then
 contained in the Application Tooling
 Specification document.*

Japan

Description	Product #
Applicator for M21 1A	0573163000
Bench Press, 22-28	
AWG, for 50397	
and 50398 Crimp	
Terminal	

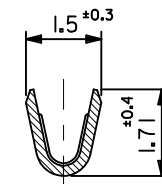
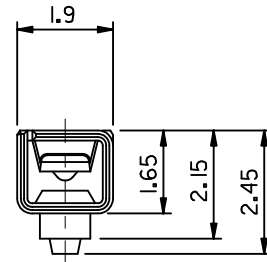
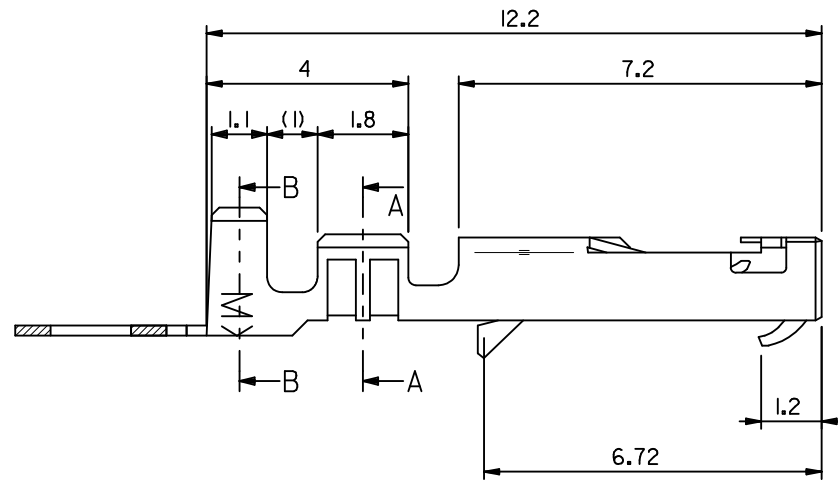
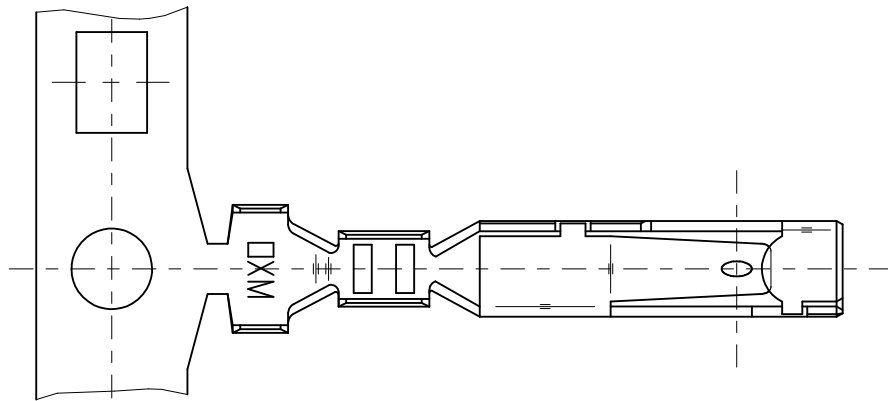
Side-Feed Applicator 0573163200
For Full-Auto
Machine
Extraction Tool 0573166100

This document was generated on 04/15/2010

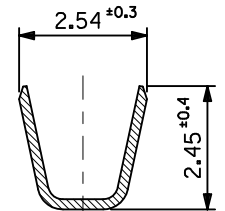
PLEASE CHECK WWW.MOLEX.COM FOR LATEST PART INFORMATION

注記
NOTES

- 適合ハウジング : 51111 シリーズ
APPLICABLE HOUSING : 51111 SERIES
- 材料 MATERIAL
りん青銅 (t = 0.2)
PHOSPHOR BRONZE
錫メッキ 0.9 μm 以上 リフロー処理 (前めっき)
TIN 0.9 μm MIN. REFLOW TREATMENT (PRE-PLATED)
- 適用電線サイズ AWG #22-28
被覆外径 : 1.15~1.8mm
- ELV及びRoHS 適合品
ELV AND RoHS COMPLIANT



断面 A-A
SECT. A-A



断面 B-B
SECT. B-B

PLASTIC BAG	50397-8100	バラ状 LOOSE
REEL	50397-8000	連鎖状 CHAIN
PACKAGING SPEC.	オーダー番号 ORDER NO.	形態 FORM
CONNECTOR SERIES NO. 50397-8*00		

RELEASED EC NO: J2010-1818 DRWN: NYOSHIKAWA 2010/03/10 CHKD: KASAKAWA 2010/03/10 APPR: NUKITA 2010/03/11	GENERAL TOLERANCES (UNLESS SPECIFIED)		DIMENSION STYLE	SCALE	DESIGN UNITS	THIRD ANGLE PROJECTION
			MM ONLY	---	METRIC	
	10 UNDER	±0.2	DRAWN BY	DATE	TITLE	
	10 OVER 30 UNDER	±0.25	NYOSHIKAWA	2010/03/10	2.5 WIRE TO WIRE CONN. CRIMP RECEPTACLE	
30 OVER	±0.3	CHECKED BY	DATE	MOLEX INCORPORATED		
ANGULAR	±3 °	KASAKAWA	2010/03/10	SD-50397-001		
DRAFT WHERE APPLICABLE MUST REMAIN WITHIN DIMENSIONS		APPROVED BY	DATE	SHEET NO.		
		NUKITA	2010/03/10	1 OF 1		
		MATERIAL NO.	SEE TABLE	THIS DRAWING CONTAINS INFORMATION THAT IS PROPRIETARY TO MOLEX INCORPORATED AND SHOULD NOT BE USED WITHOUT WRITTEN PERMISSION		
		SIZE	A3			