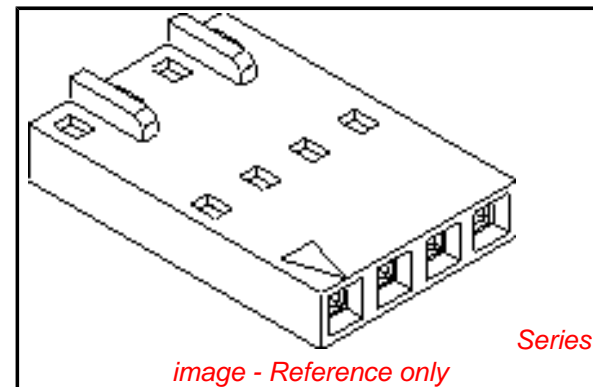


PLEASE CHECK WWW.MOLEX.COM FOR LATEST PART INFORMATION

Part Number: [0050579321](#)
Status: **Active**
Overview: [cgrid_sl_products](#)
Description: 2.54mm (.100") Pitch SL™ Crimp Housing, Single Row, Version D, Back Ribs, 21 Circuits

Documents:

3D Model	Product Specification PS-70058 (PDF)
Drawing (PDF)	Product Specification PS-70400 (PDF)
Packaging Specification (PDF)	RoHS Certificate of Compliance (PDF)



Agency Certification

CSA	LR19980
TUV	R72081037
UL	E29179

General

Product Family	Crimp Housings
Series	70066
Comments	Version D
Overview	cgrid_sl_products
Product Name	SL™

Physical

Circuits (maximum)	21
Color - Resin	Black
Flammability	94V-0
Gender	Female
Glow-Wire Compliant	No
Material - Resin	Polyester Alloy
Number of Rows	1
Packaging Type	Bag
Panel Mount	No
Pitch - Mating Interface (in)	0.100 In
Pitch - Mating Interface (mm)	2.54 mm
Stackable	Yes
Temperature Range - Operating	-40°C to +105°C

Material Info

Old Part Number	70066-0125
-----------------	------------

Reference - Drawing Numbers

Packaging Specification	PK-70066-100
Product Specification	PS-70058, PS-70400
Sales Drawing	SD-70066-0106-0129
Test Summary	TS-70058-001

EU RoHS ELV and RoHS Compliant REACH SVHC Contains SVHC: No Halogen-Free Status Not Reviewed	China RoHS 
---	--

Need more information on product environmental compliance?

Email productcompliance@molex.com
 For a multiple part number RoHS Certificate of Compliance, [click here](#)

Please visit the [Contact Us](#) section for any non-product compliance questions.

Search Parts in this Series

[70066Series](#)

Mates With

[70004](#) Interim Clip, [70013](#) , [70022](#) , [70104](#)

Use With

[70021](#) , [70058](#) , [71851](#)

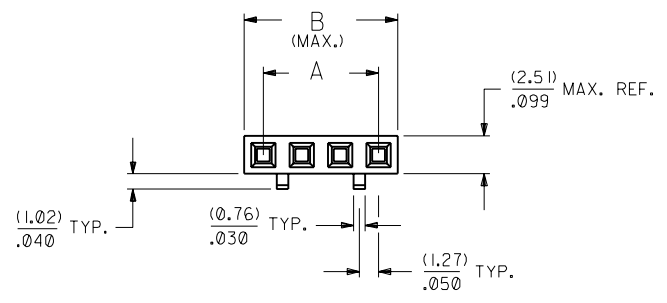
PLEASE CHECK WWW.MOLEX.COM FOR LATEST PART INFORMATION

70066

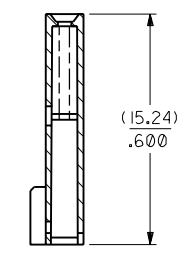
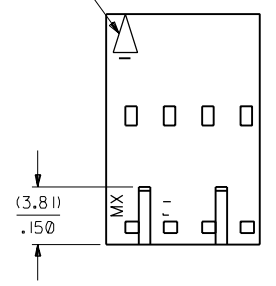
NOTES:

- 1) MATERIAL: G.F. POLYESTER
- 2) HOUSING TO BE USE WITH TERMINAL PT. NO. 70058-****
- 3) SEE CHART FOR CIRCUIT SIZES.
- 4) TO BE USED WITH (0.64)/.025 SQ. OR RD. PINS.
- 5) PARTS STACKABLE END TO END ON (2.54)/.100 CENTERS.
- 6) REFER TO PRODUCT SPECIFICATION NO. : P.S.-70058
- 7) PARTS MAY OR MAY NOT BE SUPPLIED WITH EXTERIOR CORE-OUT CONFIGURATION. SEE DWG. SD-70066-**** FOR OPTIONAL HOUSING DETAILS.
- 8) PACKAGE PER PK-70066-100.

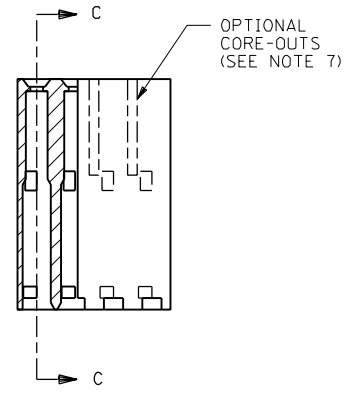
OPTION "D"



CIRCUIT NO. 1 IDENTIFICATION



SECTION C-C



CKT. SIZE	EDP. NO.	ENG. NO.	A	B
2	50-57-9302	70066-0106	(2.54) / .100	(5.05) / .199
3	50-57-9303	70066-0107	(5.08) / .200	(7.59) / .299
4	50-57-9304	70066-0108	(7.62) / .300	(10.13) / .399
5	50-57-9305	70066-0109	(10.16) / .400	(12.67) / .499
6	50-57-9306	70066-0110	(12.70) / .500	(15.21) / .599
7	50-57-9307	70066-0111	(15.24) / .600	(17.75) / .699
8	50-57-9308	70066-0112	(17.78) / .700	(20.29) / .799
9	50-57-9309	70066-0113	(20.32) / .800	(22.83) / .899
10	50-57-9310	70066-0114	(22.86) / .900	(25.37) / .999
11	50-57-9311	70066-0115	(25.40) / 1.000	(27.91) / 1.099
12	50-57-9312	70066-0116	(27.94) / 1.100	(30.45) / 1.199
13	50-57-9313	70066-0117	(30.48) / 1.200	(32.99) / 1.299
14	50-57-9314	70066-0118	(33.02) / 1.300	(35.53) / 1.399
15	50-57-9315	70066-0119	(35.56) / 1.400	(38.07) / 1.499
16	50-57-9316	70066-0120	(38.10) / 1.500	(40.61) / 1.599
17	50-57-9317	70066-0121	(40.64) / 1.600	(43.15) / 1.699
18	50-57-9318	70066-0122	(43.18) / 1.700	(45.69) / 1.799
19	50-57-9319	70066-0123	(45.72) / 1.800	(48.23) / 1.899
20	50-57-9320	70066-0124	(48.26) / 1.900	(50.77) / 1.999
21	50-57-9321	70066-0125	(50.80) / 2.000	(53.31) / 2.099
22	50-57-9322	70066-0126	(53.34) / 2.100	(55.85) / 2.199
23	50-57-9323	70066-0127	(55.88) / 2.200	(58.39) / 2.299
24	50-57-9324	70066-0128	(58.42) / 2.300	(60.93) / 2.399
25	50-57-9325	70066-0129	(60.96) / 2.400	(63.47) / 2.499

70066

MFG. SH. REV.

E	REVISED PER ECR# U10967 8-8-91 MJM/MGB	DIMENSIONS SHOWN (METRIC) INCH UNLESS OTHERWISE SPECIFIED TOLERANCES: ANGULAR ± 1/2°	<table border="1"> <tr> <th></th> <th>INCH</th> <th>METRIC</th> </tr> <tr> <td>3 PLACE</td> <td>± .010</td> <td>---</td> </tr> <tr> <td>2 PLACE</td> <td>± .014</td> <td>± 0.25</td> </tr> <tr> <td>1 PLACE</td> <td>---</td> <td>± 0.35</td> </tr> </table>		INCH	METRIC	3 PLACE	± .010	---	2 PLACE	± .014	± 0.25	1 PLACE	---	± 0.35	<table border="1"> <tr> <td>□ = 0</td> <td>▼ = 0</td> <td>REVISE ONLY ON CAD SYSTEM</td> </tr> <tr> <td colspan="3">TITLE HOUSING CONNECTOR (2.54)/.100 GRID STACKABLE SINGLE ROW</td> </tr> <tr> <td colspan="2">MOLLEX INCORPORATED LISLE, ILL. 60532 U.S.A.</td> <td>SHEET NO. 1 DATE 03/28/86</td> </tr> <tr> <td colspan="2">PART NO. SD-70066-0106-0129</td> <td>DRWG. NO. DA 1 C</td> </tr> <tr> <td colspan="3">FILE NAME: 700660106 THIS DRAWING CONTAINS INFORMATION THAT IS PROPRIETARY TO MOLEX INC. AND SHOULD NOT BE USED WITHOUT WRITTEN PERMISSION.</td> </tr> </table>	□ = 0	▼ = 0	REVISE ONLY ON CAD SYSTEM	TITLE HOUSING CONNECTOR (2.54)/.100 GRID STACKABLE SINGLE ROW			MOLLEX INCORPORATED LISLE, ILL. 60532 U.S.A.		SHEET NO. 1 DATE 03/28/86	PART NO. SD-70066-0106-0129		DRWG. NO. DA 1 C	FILE NAME: 700660106 THIS DRAWING CONTAINS INFORMATION THAT IS PROPRIETARY TO MOLEX INC. AND SHOULD NOT BE USED WITHOUT WRITTEN PERMISSION.		
				INCH	METRIC																										
3 PLACE	± .010	---																													
2 PLACE	± .014	± 0.25																													
1 PLACE	---	± 0.35																													
□ = 0	▼ = 0	REVISE ONLY ON CAD SYSTEM																													
TITLE HOUSING CONNECTOR (2.54)/.100 GRID STACKABLE SINGLE ROW																															
MOLLEX INCORPORATED LISLE, ILL. 60532 U.S.A.		SHEET NO. 1 DATE 03/28/86																													
PART NO. SD-70066-0106-0129		DRWG. NO. DA 1 C																													
FILE NAME: 700660106 THIS DRAWING CONTAINS INFORMATION THAT IS PROPRIETARY TO MOLEX INC. AND SHOULD NOT BE USED WITHOUT WRITTEN PERMISSION.																															
D	REVISED PER ECR# U80051 3-27-89 MCB	DRIFT WHERE APPLICABLE MUST REMAIN WITHIN DIMENSIONS	<table border="1"> <tr> <td>DRWG. BY: RS</td> <td>CHK'D. BY: WZ</td> </tr> <tr> <td>APP'D. BY: RL</td> <td>SCALE: 4:1</td> </tr> </table>	DRWG. BY: RS	CHK'D. BY: WZ	APP'D. BY: RL	SCALE: 4:1																								
DRWG. BY: RS	CHK'D. BY: WZ																														
APP'D. BY: RL	SCALE: 4:1																														
F	ADD PKG NOTE ECN UDT2000-0468 SCHAFER 99/12/1	C	REDRAWN ON CAD ECR # 9120 5/5/86 WZ																												
LTR.	REVISIONS	LTR.	REVISIONS																												