

**PLEASE CHECK WWW.MOLEX.COM FOR LATEST PART INFORMATION**

**Part Number:** [0887683610](#)  
**Status:** **Active**  
**Overview:** high definition multimedia interface hdmi  
**Description:** HDMI\*-to-DVI-Digital Cable Assembly, 30 AWG, 2.0m (6.56' ) Length

**Documents:**

[Drawing \(PDF\)](#) [RoHS Certificate of Compliance \(PDF\)](#)  
[Product Specification PS-88768-001 \(PDF\)](#)

**General**

Product Family	Cable Assemblies
Series	88768
Connector to Connector	HDMI*-to-DVI-Digital
Overview	<u>high definition multimedia interface hdmi</u>
Product Name	HDMI*

**Physical**

Cable Length	2.0m (6.56' )
Circuits (Loaded)	19
Color - Resin	Black, Natural
Gender	Male-Male
Lock to Mating Part	Yes
Material - Metal	High Performance Alloy (HPA), Phosphor Bronze
Material - Plating Mating	Gold
Material - Plating Termination	Tin
Material - Resin	High Temperature Thermoplastic, Low Density Polyethylene, Polyester
Packaging Type	Bag
Pitch - Mating Interface (in)	0.039 In
Pitch - Mating Interface (mm)	1.00 mm
Plating min: Mating (µin)	10, 32
Plating min: Mating (µm)	0.25, 0.8
Plating min: Termination (µin)	150, 50.8
Plating min: Termination (µm)	1.27, 3.80
Single Ended	No
Termination Interface: Style	N/A, Through Hole
Wire Insulation Diameter	N/A
Wire Size AWG	30
Wire/Cable Type	Round

**Electrical**

Current - Maximum per Contact	0.5A
Impedance	100 ohms
Shielded	No
Voltage - Maximum	40V

**Material Info**

**Reference - Drawing Numbers**

Product Specification	PS-88768-001
Sales Drawing	SD-88768-3610, SD887683610

\*High Definition Multimedia Interface and HDMI are trademarks of HDMI Licensing, LLC.

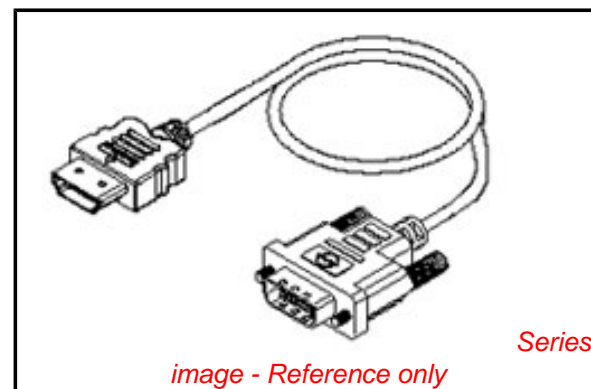


image - Reference only

**EU RoHS**

**RoHS Compliant by Exemption**  
**REACH SVHC Not Reviewed**  
**Halogen-Free Status Not Reviewed**

**China RoHS**



**Need more information on product environmental compliance?**

Email [productcompliance@molex.com](mailto:productcompliance@molex.com)  
 For a multiple part number RoHS Certificate of Compliance, [click here](#)

Please visit the [Contact Us](#) section for any non-product compliance questions.

**Search Parts in this Series**  
 88768Series

6

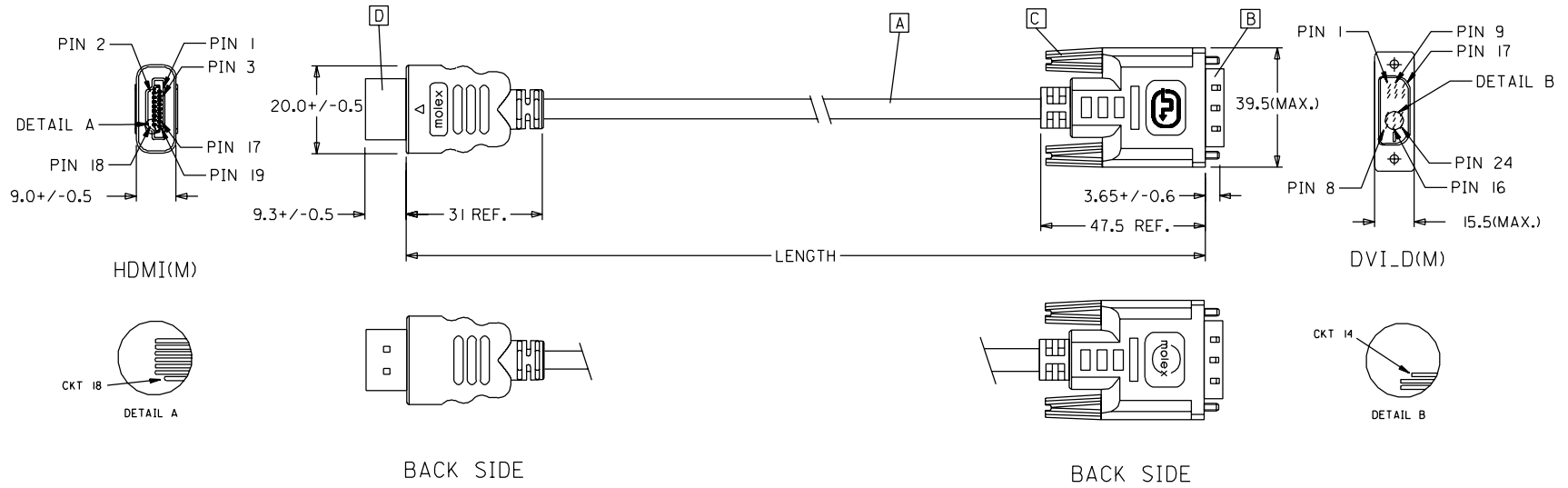
5

4

3

2

1



88768-3620	HDMI TO DVI-D(M) CABLE ASS'Y,3M	3000+/-80	BLACK	5,5MM(TMDS - AWG*30)
88768-3610	HDMI TO DVI-D(M) CABLE ASS'Y,2M	2000+/-60	BLACK	5,5MM(TMDS - AWG*30)
88768-3600	HDMI TO DVI-D(M) CABLE ASS'Y,1M	1000+/-30	BLACK	5,5MM(TMDS - AWG*30)
88768-3530	HDMI TO DVI-D(M) CABLE ASS'Y,5M	5000+/-100	BLACK	7,3MM(TMDS - AWG*28)
88768-3520	HDMI TO DVI-D(M) CABLE ASS'Y,3M	3000+/-80	BLACK	7,3MM(TMDS - AWG*28)
88768-3510	HDMI TO DVI-D(M) CABLE ASS'Y,2M	2000+/-60	BLACK	7,3MM(TMDS - AWG*28)
88768-3500	HDMI TO DVI-D(M) CABLE ASS'Y,1M	1000+/-30	BLACK	7,3MM(TMDS - AWG*28)
MX P/N	DESCRIPTION	LENGTH	CABLE COLOR	CABLE OD

EC NO. DRWN: CHK: APPR: C	DESCRIPTION REV	QUALITY SYMBOLS MAJOR ▼ = 0 CRITICAL ▽ = 0	GENERAL TOLERANCES: (UNLESS SPECIFIED)		SCALE N.S.T	DESIGN UNITS <input checked="" type="checkbox"/> mm <input type="checkbox"/> INCH	<input type="checkbox"/> THIRD ANGLE <input type="checkbox"/> FIRST ANGLE PROJECTION	<input type="checkbox"/> mm <input type="checkbox"/> INCH <input checked="" type="checkbox"/> mm ONLY	SHT REV	
		4 PLACES ±0. <del>±.</del> 3 PLACES ±0. <del>±.</del> 2 PLACES ±0. <del>±.</del> 1 PLACE ±0. <del>±.</del>	mm INCH ANGULAR: ± °	DRAWN BY & DATE Louis Chen 03/11/17	TITLE: HDMI(M) TO DVI-D(M) CABLE ASS'Y			MATERIAL NO. SEE TABLE	DRAWING NO. SD-88768-001	SHEET NO. 1 OF 2
				CHECKED BY & DATE Teddy Kan 03/11/17	MOLEX INCORPORATED					
				APPROVED BY & DATE Baron Chen 03/11/17	THIS DRAWING CONTAINS INFORMATION THAT IS PROPRIETARY TO MOLEX INCORPORATED AND SHOULD NOT BE USED WITHOUT WRITTEN PERMISSION.			SIZE A4		

6

5

4

3

2

1

## NOTE: 1. OVERMOLD SPECIFICATION

1.1 DVI BOOT MOLDED WITH SNOW WHITE PVC RESIN P/N.

1.1.1 UL94V-0

1.1.2 HARDNESS (DUROMETER): SHORE A 90-95

1.2 HDMI OUTER MOLD WITH BLACK PVC RESIN. UL94V-0.

## 2. MECHANICAL SPECIFICATION

2.1 CABLE SHOULD STAND THE PULL FORCE 89-111N FOR 30 SECONDS WITH NO VISIBLE TERMINATION DAMAGE.

2.2 CABLE SHOULD PASS THE FLEX TEST IN 100 CYCLES AT EACH OF PLANES, PER EIA 364-41, CONDITION 1.

## 3. CABLE ELECTRICAL SPECIFICATION

3.1 DIELECTRIC STRENGTH: 300V AC FOR 10MS.

3.2 INSULATION RESISTANCE: 10 MEGA Ohms MIN.

3.3 DIFFERENTIAL LINES CHARACTERISTIC IMPEDANCE: 100+/-10 Ohms @TDR.

3.4 CONTACT RESISTANCE: 2 OHMS(MAX.).

3.5 SIGNALS CROSSTALK(FEXT): 5% (MAX.) PER ANSI/EIA-364-90.


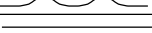

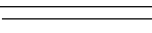


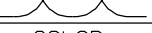

3.6 SIGNALS INTRA-PAIR SKEW : &lt;150 ps.

## 4. DVI CONNECTOR SPECIFICATION

4.1 REFER TO PRODUCT SPEC. PS74320-0001.

4.2 CONTACT PLATING: AU FLASH.

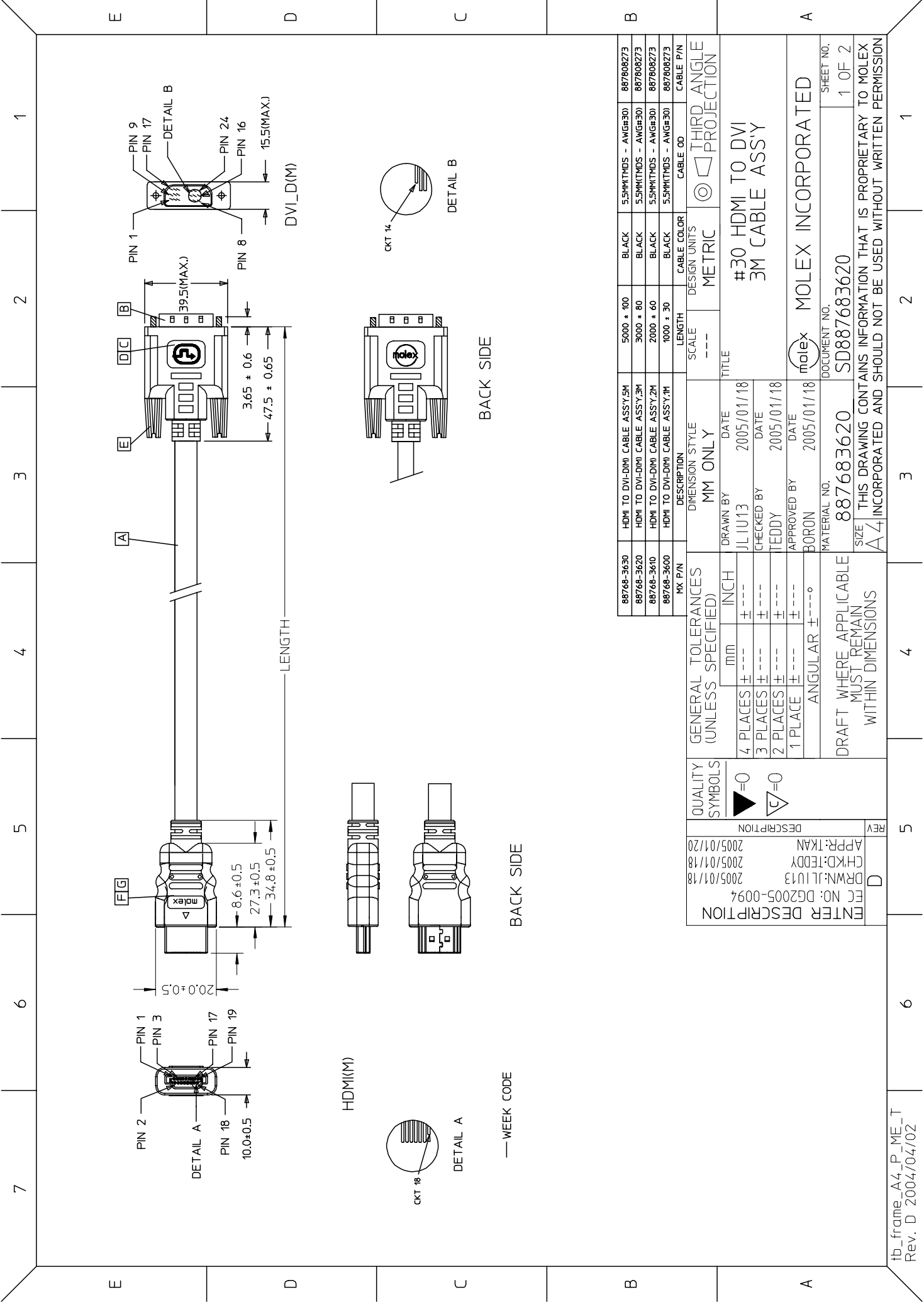
5. MATERIAL MUST MEET MANAGEMENT REGULATIONS FOR ENVIRONMENT (MX TS-0002).

SHIELD	SHIELD		GROUND
PIN 19	PIN 16	=====	HOT PLUG DETECT
PIN 18	PIN 14	=====	POWER +5V
PIN 17	PIN 15	=====	GROUND(+5V&DDC)
PIN 16	PIN 7	=====	DDC DATA(SDA)
PIN 15	PIN 6	=====	DDC CLOCK(SCL)
PIN 11	PIN 22	=====	TMDS CLOCK SHIELD
PIN 12	PIN 24		TMDS CLOCK-
PIN 10	PIN 23		TMDS CLOCK+
PIN 8	PIN 19	=====	TMDS DATA 0 SHIELD
PIN 9	PIN 17		TMDS DATA 0-
PIN 7	PIN 18		TMDS DATA 0+
PIN 5	PIN 11	=====	TMDS DATA 1 SHIELD
PIN 6	PIN 9		TMDS DATA 1-
PIN 4	PIN 10		TMDS DATA 1+
PIN 2	PIN 3	=====	TMDS DATA 2 SHIELD
PIN 3	PIN 1		TMDS DATA 2-
PIN 1	PIN 2		TMDS DATA 2+
HDMI	DVI-D	COLOR	CABLE FUNCTION

D	HDMI PLUG ASSY'	1
C	DVI THUMB SCREW	2
B	DVI_D SINGLE CHANNEL G/F CONNECTOR	1
A	DVI SINGLE LINK CABLE (SEE TABLE)	1
ITEM	DESCRIPTION	QTY.

EC NO. C	DRWN: CHK: APPR:	DESCRIPTION REV	QUALITY SYMBOLS	GENERAL TOLERANCES: (UNLESS SPECIFIED)	SCALE N.S.T	DESIGN UNITS <input checked="" type="checkbox"/> mm <input type="checkbox"/> INCH	THIRD ANGLE PROJECTION	<input type="checkbox"/> mm INCH <input type="checkbox"/> mm ONLY	SHT	REV
			MAJOR ▼ = 0 CRITICAL ▽ = 5	mm INCH	DRAWN BY & DATE Louis Chen 03/11/17	TITLE: HDMI(M) TO DVI-D(M) CABLE ASS'Y				
			4 PLACES ±0.1 ±.1		CHECKED BY & DATE Teddy Kan 03/11/17					
			3 PLACES ±0.1 ±.1		APPROVED BY & DATE Boron Chen 03/11/17					
			2 PLACES ±0.1 ±.1							
			1 PLACE ±0.1 ±.1	ANGULAR: ± °	CAD FILENAME S88768AA.S02	MATERIAL NO. SEE TABLE	DRAWING NO. SD-88768-001	SHEET NO. 2 OF 2		
					THIS DRAWING CONTAINS INFORMATION THAT IS PROPRIETARY TO MOLEX INCORPORATED AND SHOULD NOT BE USED WITHOUT WRITTEN PERMISSION.				SIZE A4	

WBORD\_A.BOR REV A  
97/05/14 LEVEL 3



HDMI(M)

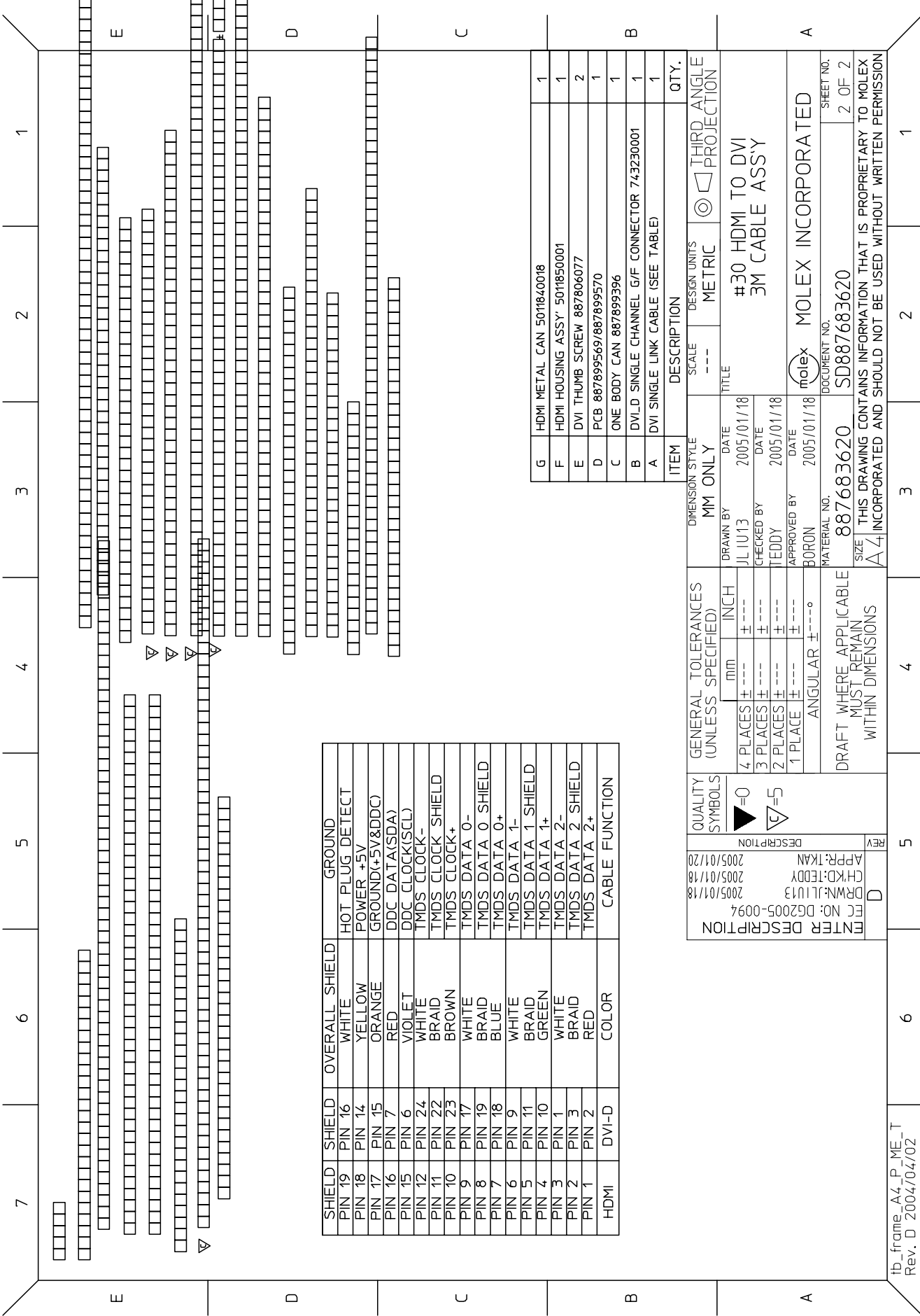
— WEEK CODE

88768-3630	HDMI TO DVI-D(M) CABLE ASSY,5M	5000 * 100	BLACK	5.5MM(TMS) - AWG#30	8876808273
88768-3620	HDMI TO DVI-D(M) CABLE ASSY,3M	3000 * 80	BLACK	5.5MM(TMS) - AWG#30	8876808273
88768-3610	HDMI TO DVI-D(M) CABLE ASSY,2M	2000 * 60	BLACK	5.5MM(TMS) - AWG#30	8876808273
88768-3600	HDMI TO DVI-D(M) CABLE ASSY,1M	1000 * 30	BLACK	5.5MM(TMS) - AWG#30	8876808273
MX P/N	DESCRIPTION	LENGTH	CABLE COLOR	CABLE OD	CABLE P/N

GENERAL TOLERANCES (UNLESS SPECIFIED)		DIMENSION STYLE		SCALE		DESIGN UNITS		THIRD ANGLE PROJECTION	
mm		MM ONLY		---		METRIC		#30 HDMI TO DVI 3M CABLE ASSY	
4 PLACES ±	INCH	DRAWN BY	DATE	TITLE					
3 PLACES ±	---	JL IU13	2005/01/18						
2 PLACES ±	---	CHECKED BY	DATE						
1 PLACE ±	---	TEDDY	2005/01/18						
ANGULAR ±	---	APPROVED BY	DATE						
	---	BORON	2005/01/18						

QUALITY SYMBOLS		MATERIAL NO.		DOCUMENT NO.		SHEET NO.	
▷=0		887683620		SD887683620		1 OF 2	
∇=0		DRAFT WHERE APPLICABLE MUST REMAIN WITHIN DIMENSIONS		THIS DRAWING CONTAINS INFORMATION THAT IS PROPRIETARY TO MOLEX INCORPORATED AND SHOULD NOT BE USED WITHOUT WRITTEN PERMISSION			

ENTER DESCRIPTION	REV
APPR:TKAN	5
CHKD:TEDDY	4
DRWN:JL IU13	3
FCC NO: DG2005-0094	2
	1



SHIELD	SHIELD	OVERALL SHIELD	GROUND
PIN 19	PIN 16	WHITE	HOT PLUG DETECT
PIN 18	PIN 14	YELLOW	POWER +5V
PIN 17	PIN 15	ORANGE	GROUND(+5V&DDC)
PIN 16	PIN 7	RED	DDC DATA(SDA)
PIN 15	PIN 6	VIOLET	DDC CLOCK(SCL)
PIN 12	PIN 24	WHITE	TMDS CLOCK-
PIN 11	PIN 22	BRAD	TMDS CLOCK SHIELD
PIN 10	PIN 23	BROWN	TMDS CLOCK+
PIN 9	PIN 17	WHITE	TMDS DATA 0-
PIN 8	PIN 19	BRAD	TMDS DATA 0 SHIELD
PIN 7	PIN 18	BLUE	TMDS DATA 0+
PIN 6	PIN 9	WHITE	TMDS DATA 1-
PIN 5	PIN 11	BRAD	TMDS DATA 1 SHIELD
PIN 4	PIN 10	GREEN	TMDS DATA 1+
PIN 3	PIN 1	WHITE	TMDS DATA 2-
PIN 2	PIN 3	BRAD	TMDS DATA 2 SHIELD
PIN 1	PIN 2	RED	TMDS DATA 2+
HDMI	DVI-D	COLOR	CABLE FUNCTION

ITEM	DESCRIPTION	SCALE	DESIGN UNITS	THIRD ANGLE PROJECTION	QTY.
G	HDMI METAL CAN 501840018	---	METRIC		1
F	HDMI HOUSING ASSY: 501850001	---	METRIC		1
E	DVI THUMB SCREW 887806077	---	METRIC		2
D	PCB 887899569/887899570	---	METRIC		1
C	ONE BODY CAN 887899396	---	METRIC		1
B	DVI-D SINGLE CHANNEL G/F CONNECTOR 743230001	---	METRIC		1
A	DVI SINGLE LINK CABLE (SEE TABLE)	---	METRIC		1

GENERAL TOLERANCES (UNLESS SPECIFIED)	QUALITY SYMBOLS	REVISION
4 PLACES ± --- 3 PLACES ± --- 2 PLACES ± --- 1 PLACE ± ---	= 0 = 5	ENTER DESCRIPTION APP: TKAN CH: KJ: TEDDY DR: JM: JLIU13 FCC NO: DG2005-0094 2005/01/18 2005/01/18 2005/01/18
ANGULAR ± ---°		D 2005/01/18 2005/01/18 2005/01/18
DRAFT WHERE APPLICABLE MUST REMAIN WITHIN DIMENSIONS		

DIMENSION STYLE	MM ONLY	DATE	TITLE
SCALE	---	---	---
DESIGN UNITS	METRIC		
THIRD ANGLE PROJECTION			
DESCRIPTION			#30 HDMI TO DVI 3M CABLE ASSY
MATERIAL NO.	887683620	2005/01/18	
DOCUMENT NO.	SD887683620	2005/01/18	
SHEET NO.	2 OF 2	2005/01/18	

THIS DRAWING CONTAINS INFORMATION THAT IS PROPRIETARY TO MOLEX INCORPORATED AND SHOULD NOT BE USED WITHOUT WRITTEN PERMISSION