

**MC34001, MC35001  
MC34002, MC35002  
MC34004, MC35004**

**JFET Input Operational Amplifiers**

These low cost JFET Input operational amplifiers combine two state-of-the-art linear technologies on a single monolithic integrated circuit. Each internally compensated operational amplifier has well matched high voltage JFET input devices for low input offset voltage. The BIFET technology provides wide bandwidths and fast slew rates with low input bias currents, input offset currents, and supply currents.

The Motorola BIFET family offers single, dual and quad operational amplifiers which are pin-compatible with the industry standard MC1741, MC1458, and the MC3403/LM324 bipolar devices. The MC35001/35002/35004 series are specified over the military operating temperature range of  $-55^{\circ}$  to  $+125^{\circ}\text{C}$  and the MC34001/34002/34004 series are specified from  $0^{\circ}$  to  $+70^{\circ}\text{C}$ .

- Input Offset Voltage Options of 5.0 mV and 10 mV Maximum
- Low Input Bias Current: 40 pA
- Low Input Offset Current: 10 pA
- Wide Gain Bandwidth: 4.0 MHz
- High Slew Rate: 13 V/ $\mu\text{s}$
- Low Supply Current: 1.4 mA per Amplifier
- High Input Impedance:  $10^{12} \Omega$
- High Common Mode and Supply Voltage Rejection Ratios: 100 dB
- Industry Standard Pinouts

**JFET INPUT  
OPERATIONAL AMPLIFIERS**



**P SUFFIX**  
PLASTIC PACKAGE  
CASE 626

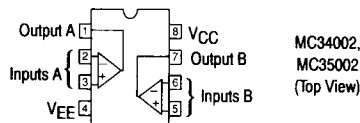
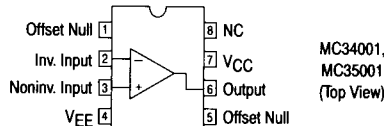


**U SUFFIX**  
CERAMIC PACKAGE  
CASE 693



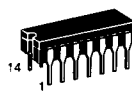
**D SUFFIX**  
PLASTIC PACKAGE  
CASE 751  
(SO-8)

**PIN CONNECTIONS**

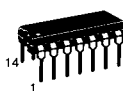


**ORDERING INFORMATION**

Op Amp Function	Device	Temperature Range	Package
Single	MC34001BD, D	$0^{\circ}$ to $+70^{\circ}\text{C}$	SO-8
	MC34001BP, P		Plastic DIP
	MC34001BU, U		Ceramic DIP
Dual	MC34002BD, D	$0^{\circ}$ to $+70^{\circ}\text{C}$	SO-8
	MC34002BP, P		Plastic DIP
	MC35002BU, U		Ceramic DIP
Quad	MC34004BL, L	$0^{\circ}$ to $+70^{\circ}\text{C}$	Ceramic DIP
	MC34004BP, P		Plastic DIP
	MC35004BL, L		Ceramic DIP
		$-55^{\circ}$ to $+125^{\circ}\text{C}$	

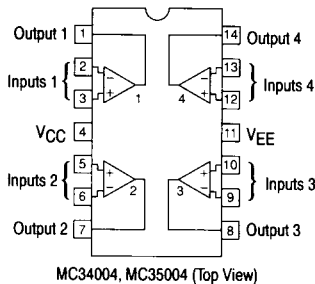


**L SUFFIX**  
CERAMIC PACKAGE  
CASE 632



**P SUFFIX**  
PLASTIC PACKAGE  
CASE 646

**PIN CONNECTIONS**



## MC34001, MC35001, MC34002, MC35002, MC34004, MC35004

### MAXIMUM RATINGS

Rating	Symbol	MC35001 MC35002 MC35004	MC34001 MC34002 MC34004	Unit
Supply Voltage	$V_{CC}, V_{EE}$	$\pm 22$	$\pm 18$	V
Differential Input Voltage (Note 1)	$V_{ID}$	$\pm 40$	$\pm 30$	V
Input Voltage Range	$V_{IDR}$	$\pm 20$	$\pm 16$	V
Open Short Circuit Duration	$t_{SC}$	Continuous		
Operating Ambient Temperature Range	$T_A$	-55 to +125	0 to +70	$^{\circ}\text{C}$
Operating Junction Temperature Ceramic Package Plastic Package	$T_J$	150 —	150 150	$^{\circ}\text{C}$
Storage Temperature Range Ceramic Package Plastic Package	$T_{stg}$	-65 to +150 —	-65 to +150 -55 to +125	$^{\circ}\text{C}$

**NOTES:** 1. Unless otherwise specified, the absolute maximum negative input voltage is equal to the negative power supply.

### ELECTRICAL CHARACTERISTICS ( $V_{CC} = +15\text{ V}$ , $V_{EE} = -15\text{ V}$ , $T_A = 25^{\circ}\text{C}$ , unless otherwise noted.)

Characteristics	Symbol	MC35001/35002/35004			MC34001/34002/34004			Unit
		Min	Typ	Max	Min	Typ	Max	
Input Offset Voltage ( $R_S \leq 10\text{ k}$ ) MC3500XB, MC3400XB MC3500X, MC3400X	$V_{IO}$	— —	3.0 5.0	5.0 10	— —	3.0 5.0	5.0 10	mV
Average Temperature Coefficient of Input Offset Voltage $R_S \leq 10\text{ k}$ , $T_A = T_{low}$ to $T_{high}$ (Note 2)	$\Delta V_{IO}/\Delta T$	—	10	—	—	10	—	$\mu\text{V}/^{\circ}\text{C}$
Input Offset Current ( $V_{CM} = 0$ ) (Note 3) MC3500XB, MC3400XB MC3500X, MC3400X	$I_{IO}$	— —	10 25	50 100	— —	25 25	100 100	pA
Input Bias Current ( $V_{CM} = 0$ ) (Note 3) MC3500XB, MC3400XB MC3500X, MC3400X	$I_{IB}$	— —	40 50	100 200	— —	50 50	200 200	pA
Input Resistance	$r_i$	—	$10^{12}$	—	—	$10^{12}$	—	$\Omega$
Common Mode Input Voltage Range	$V_{ICR}$	$\pm 11$ —	+15 -12	— —	$\pm 11$ —	+15 -12	— —	V
Large Signal Voltage Gain ( $V_O = \pm 10\text{ V}$ , $R_L = 2.0\text{ k}$ ) MC3500XB, MC3400XB MC3500X, MC3400X	$A_{VOL}$	50 25	150 100	— —	50 25	150 100	— —	V/mV
Output Voltage Swing ( $R_L \geq 10\text{ k}$ ) ( $R_L \geq 2.0\text{ k}$ )	$V_O$	$\pm 12$ $\pm 10$	$\pm 14$ $\pm 13$	— —	$\pm 12$ $\pm 10$	$\pm 14$ $\pm 13$	— —	V
Common Mode Rejection Ratio ( $R_S \leq 10\text{ k}$ ) MC3500XB, MC3400XB MC3500X, MC3400X	CMRR	80 —	100 —	— —	80 70	100 100	— —	dB
Supply Voltage Rejection Ratio ( $R_S \leq 10\text{ k}$ ) (Note 4) MC3500XB, MC3400XB MC3500X, MC3400X	PSRR	80 70	100 100	— —	80 70	100 100	— —	dB
Supply Current (Each Amplifier) MC3500XB, MC3400XB MC3500X, MC3400X	$I_D$	— —	1.4 1.4	2.5 2.7	— —	1.4 1.4	2.5 2.7	mA
Slew Rate ( $A_V = 1.0$ )	SR	—	13	—	—	13	—	V/ $\mu\text{s}$
Gain-Bandwidth Product	GBW	—	4.0	—	—	4.0	—	MHz
Equivalent Input Noise Voltage ( $R_S = 100\ \Omega$ , $f = 1000\text{ Hz}$ )	$e_n$	—	25	—	—	25	—	nV/ $\sqrt{\text{Hz}}$
Equivalent Input Noise Current ( $f = 1000\text{ Hz}$ )	$i_n$	—	0.01	—	—	0.01	—	pA/ $\sqrt{\text{Hz}}$

## MC34001, MC35001, MC34002, MC35002, MC34004, MC35004

### ELECTRICAL CHARACTERISTICS ( $V_{CC} = +15\text{ V}$ , $V_{EE} = -15\text{ V}$ , $T_A = T_{low}$ to $T_{high}$ [Note 2].)

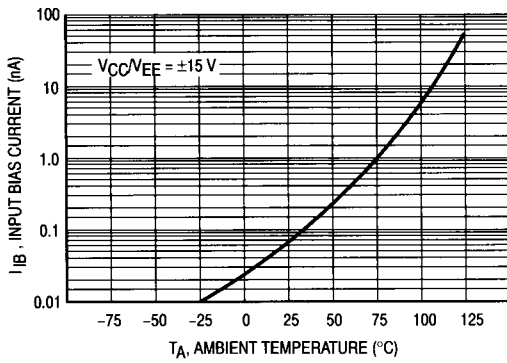
Characteristics	Symbol	MC35001/35002/35004			MC34001/34002/34004			Unit
		Min	Typ	Max	Min	Typ	Max	
Input Offset Voltage ( $R_S \leq 10\text{ k}$ ) MC3500XB, MC3400XB MC3500X, MC3400X	$V_{IO}$	—	—	7.0 14	—	—	7.0 13	mV
Input Offset Current ( $V_{CM} = 0$ ) (Note 3) MC3500XB, MC3400XB MC3500X, MC3400X	$I_{IO}$	—	—	40 40	—	—	4.0 4.0	nA
Input Bias Current ( $V_{CM} = 0$ ) (Note 3) MC3500XB, MC3400XB MC3500X, MC3400X	$I_{IB}$	—	—	50 50	—	—	8.0 8.0	nA
Common Mode Input Voltage Range	$V_{ICR}$	$\pm 11$	—	—	$\pm 11$	—	—	V
Large Signal ( $V_O = \pm 10\text{ V}$ , $R_L = 2.0\text{ k}$ ) MC3500XB, MC3400XB MC3500X, MC3400X	$AV_{OL}$	25 15	— —	— —	25 15	— —	— —	V/mV
Output Voltage Swing ( $R \geq 10\text{ k}$ ) ( $R \geq 2.0\text{ k}$ )	$V_O$	$\pm 12$ $\pm 10$	— —	— —	$\pm 12$ $\pm 10$	— —	— —	V
Common Mode Rejection Ratio ( $R_S \leq 10\text{ k}$ ) MC3500XB, MC3400XB MC3500X, MC3400X	CMRR	80 70	— —	— —	80 70	— —	— —	dB
Supply Voltage Rejection Ratio ( $R_S \leq 10\text{ k}$ ) (Note 4) MC3500XB, MC3400XB MC3500X, MC3400X	PSRR	80 70	— —	— —	80 70	— —	— —	dB
Supply Current (Each Amplifier) MC3500XB, MC3400XB MC3500X, MC3400X	$I_D$	— —	— —	2.8 3.0	— —	— —	2.8 3.0	mA

NOTES: 2.  $T_{low} = -55^\circ\text{C}$  for MC35001/35001B, MC35002/35002B, MC35004/35004B  
 $T_{high} = +125^\circ\text{C}$  for MC35001/35001B, MC35002/35002B, MC35004/35004B  
 $= 0^\circ\text{C}$  for MC34001/34001B, MC34002/35002B, MC34004/34004B  
 $= +70^\circ\text{C}$  for MC34001/34001B, MC34002/35002B, MC34004/34004B

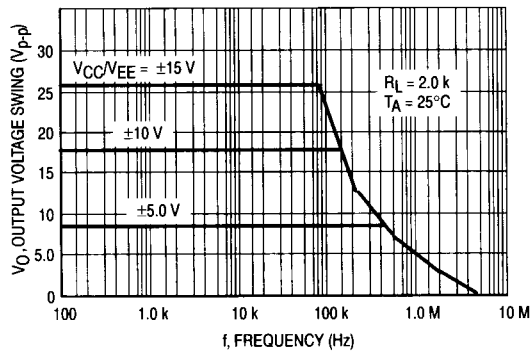
- The input bias currents approximately double for every  $10^\circ\text{C}$  rise in junction temperature,  $T_J$ . Due to limited test time, the input bias currents are correlated to junction temperature. Use of a heatsink is recommended if input bias current is to be kept to a minimum.
- Supply voltage rejection ratio is measured for both supply magnitudes increasing or decreasing simultaneously, in accordance with common practice.

**MC34001, MC35001, MC34002, MC35002, MC34004, MC35004**

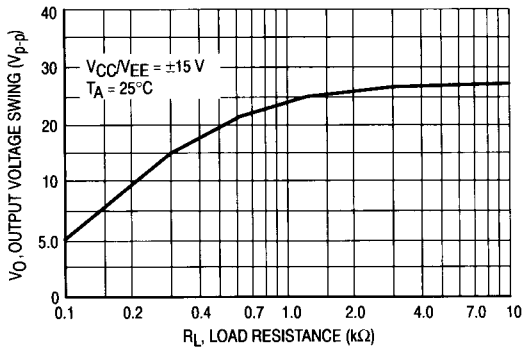
**Figure 1. Input Bias Current versus Temperature**



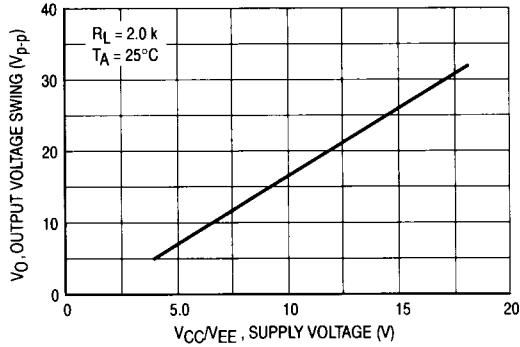
**Figure 2. Output Voltage Swing versus Frequency**



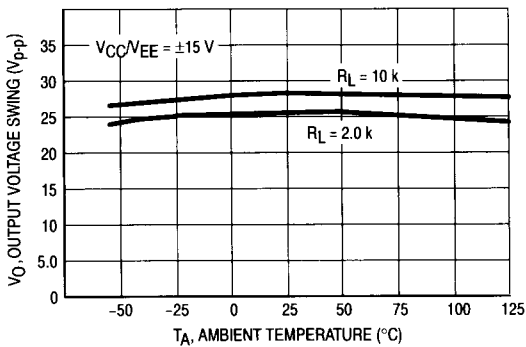
**Figure 3. Output Voltage Swing versus Load Resistance**



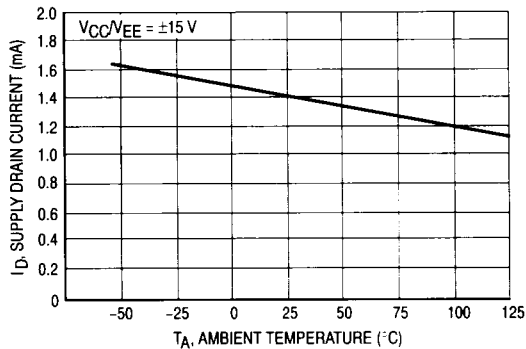
**Figure 4. Output Voltage Swing versus Supply Voltage**



**Figure 5. Output Voltage Swing versus Temperature**

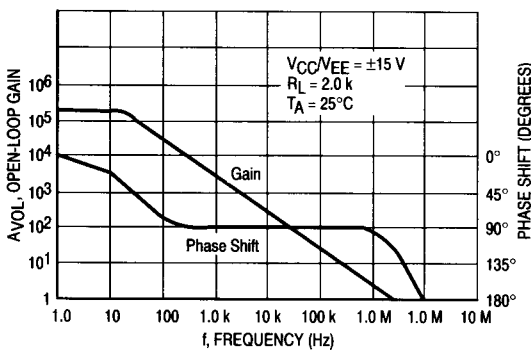


**Figure 6. Supply Current per Amplifier versus Temperature**

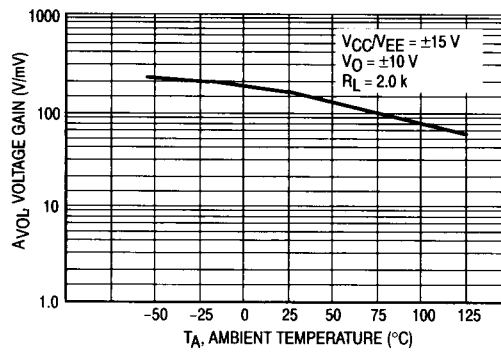


**MC34001, MC35001, MC34002, MC35002, MC34004, MC35004**

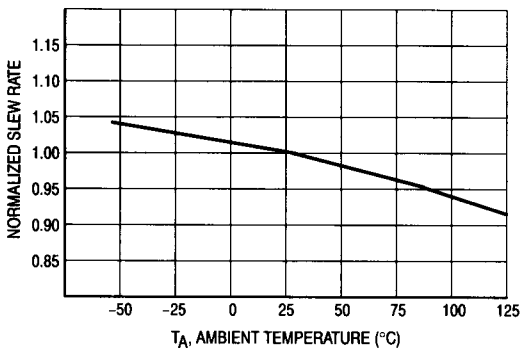
**Figure 7. Large-Signal Voltage Gain and Phase Shift versus Frequency**



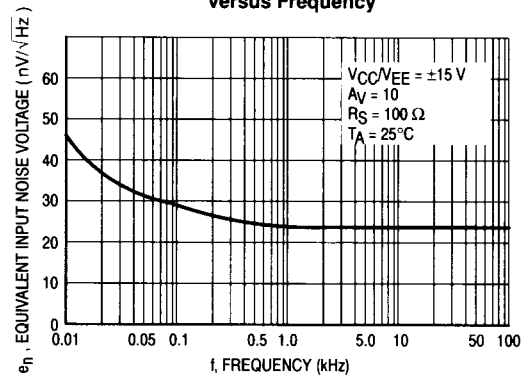
**Figure 8. Large-Signal Voltage Gain versus Temperature**



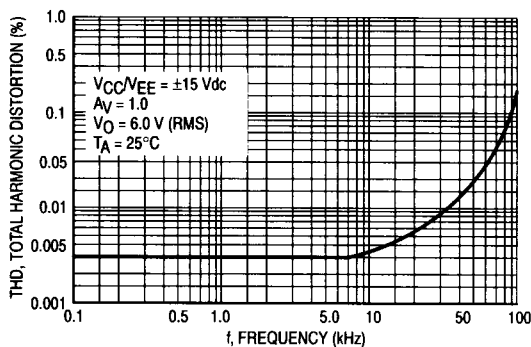
**Figure 9. Normalized Slew Rate versus Temperature**



**Figure 10. Equivalent Input Noise Voltage versus Frequency**



**Figure 11. Total Harmonic Distortion versus Frequency**



MC34001, MC35001, MC34002, MC35002, MC34004, MC35004

Representative Circuit Schematic  
(Each Amplifier)

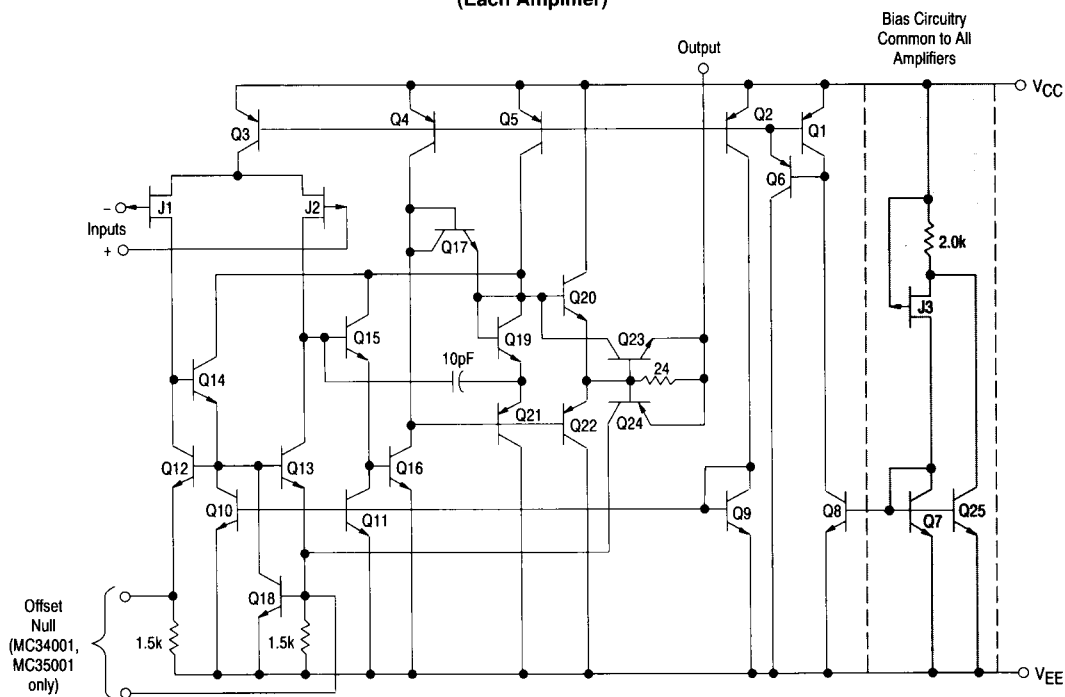
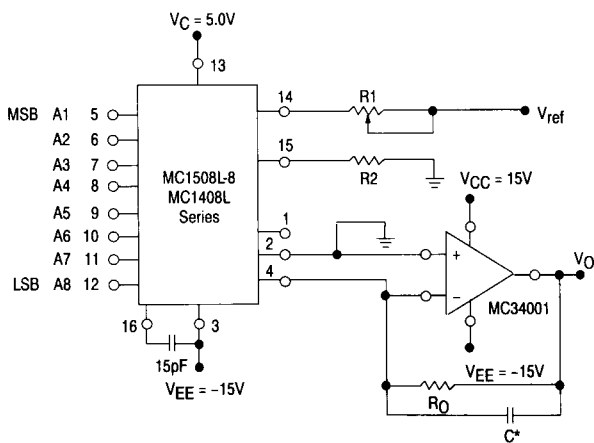


Figure 12. Output Current to Voltage Transformation for a D-to-A Converter



Settling time to within 1/2 LSB ( $\pm 19.5$  mV) is approximately  $4.0 \mu s$  from the time all bits are switched.

\*The value of C may be selected to minimize overshoot and ringing ( $C \approx 68$  pF)

Theoretical  $V_O$

$$V_O = \frac{V_{ref}}{R_1} (R_0) \left[ \frac{A_1}{2} + \frac{A_2}{4} + \frac{A_3}{8} + \frac{A_4}{16} + \frac{A_5}{32} + \frac{A_6}{64} + \frac{A_7}{128} + \frac{A_8}{256} \right]$$

Adjust  $V_{ref}$ ,  $R_1$  or  $R_0$  so that  $V_O$  with all digital inputs at high level is equal to 9.961 V.

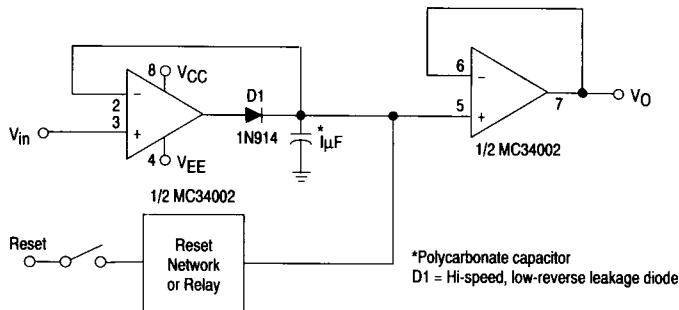
$V_{ref} = 2.0$  Vdc  
 $R_1 = R_2 \approx 1.0$  k $\Omega$   
 $R_0 = 5.0$  k $\Omega$

$$V_O = \frac{2.0 \text{ V}}{1.0 \text{ k}} (5 \text{ k}) \left[ \frac{1}{2} + \frac{1}{4} + \frac{1}{8} + \frac{1}{16} + \frac{1}{32} + \frac{1}{64} + \frac{1}{128} + \frac{1}{256} \right]$$

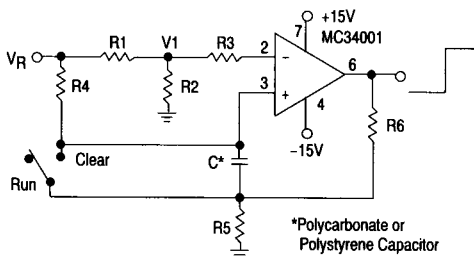
$$= 10 \text{ V} \left[ \frac{255}{256} \right] = 9.961 \text{ V}$$

**MC34001, MC35001, MC34002, MC35002, MC34004, MC35004**

**Figure 13. Positive Peak Detector**



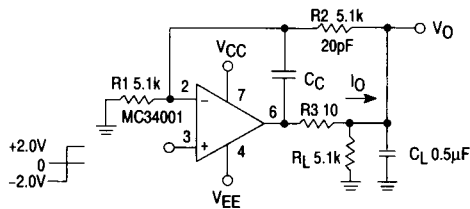
**Figure 14. Long Interval RC Timer**



Time (t) = R4 Cn (Vp/Vr-Vi), R3 = R4, R5 = 0.1 R6  
If R1 = R2: t = 0.693 R4C

Design Example: 100 Second Timer  
Vr = 10 V C = 1.0 µF R3 = R4 = 144 M  
R6 = 20 k R5 = 2.0 k R1 = R2 = 1.0 k

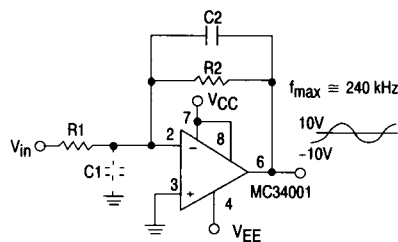
**Figure 15. Isolating Large Capacitive Loads**



- Overshoot < 10%
- ts = 10 µs
- When driving large CL, the VO slew rate is determined by CL and IO(max):

$$\frac{\Delta V_O}{\Delta t} = \frac{I_O}{C_L} = \frac{0.02}{0.5} \text{ V}/\mu\text{s} = 0.04 \text{ V}/\mu\text{s} \text{ (with } C_L \text{ shown)}$$

**Figure 16. Wide BW, Low Noise, Low Drift Amplifier**



- Power BW:  $f_{max} = \frac{S_r}{2\pi V_p} \approx 240 \text{ kHz}$
- Parasitic input capacitance (C1 ≈ 3.0 pF plus any additional layout capacitance) interacts with feedback elements and creates undesirable high-frequency pole. To compensate add C2 such that: R2C2 ≈ R1C1.