

PLEASE CHECK WWW.MOLEX.COM FOR LATEST PART INFORMATION

Part Number: [0357602710](#)

Status: **Active**

Description: JOINT-H/D

Documents:

[Drawing \(PDF\)](#)

[RoHS Certificate of Compliance \(PDF\)](#)

General

Product Family	Splices
Series	35760
Crimp Quality Equipment	Yes
Mil-Spec	N/A
Product Name	N/A

Physical

Barrel Type	Open
Insulation	None
Material - Metal	Brass
Packaging Type	Reel
Temperature Range - Operating	-30°C to +105°C
Wire Insulation Diameter	3.5mm (.138")
Wire Size AWG	16, 18, 20

Electrical

Voltage - Maximum	200V AC (RMS)/DC
-------------------	------------------

Material Info

Reference - Drawing Numbers

Sales Drawing	SD-35760-2710
---------------	---------------

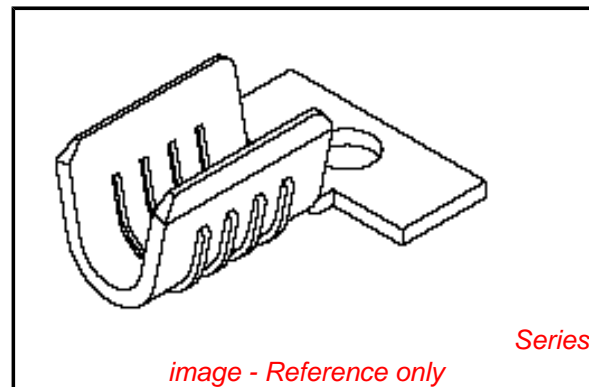


image - Reference only

EU RoHS

**ELV and RoHS
Compliant**

REACH SVHC

Contains SVHC: No

Halogen-Free

Status

Halogen-Free

China RoHS



**Need more information on product
environmental compliance?**

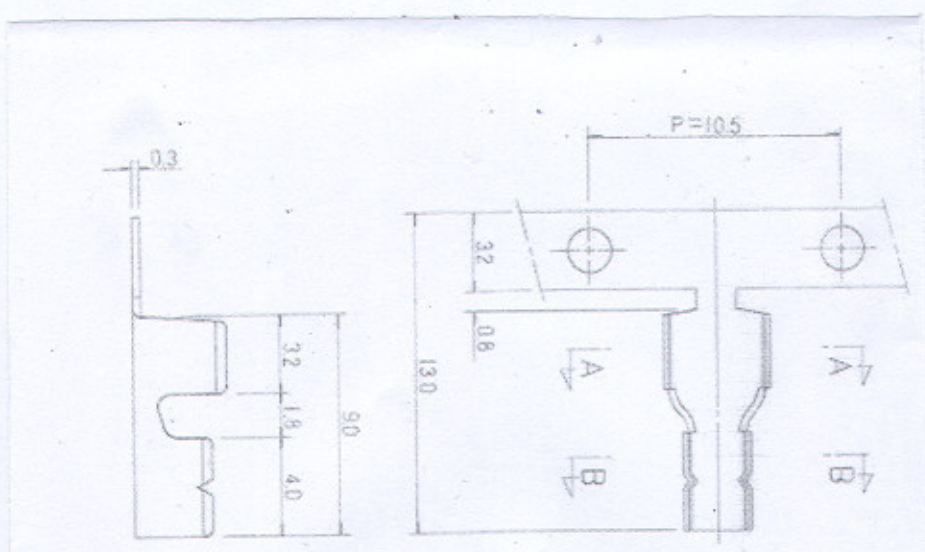
Email productcompliance@molex.com
For a multiple part number RoHS Certificate of
Compliance, [click here](#)

Please visit the [Contact Us](#) section for any
non-product compliance questions.

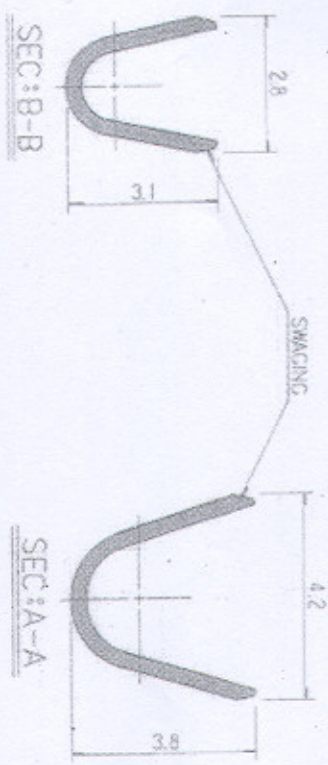
Search Parts in this Series
[35760Series](#)

DO NOT SCALE DRAWING
DIMENSION IN METRIC

PROJECT NO. SIMILAR ITEM DWG. NO.



NOTES
 1. MAT'L : BRASS
 2. FINISH : 25760-2700 (UNPLATED)
 35760 2710 (TIN PLATED)



NEW RELEASE	ECN NO.	DRWN:	CHK:	APPR:					
A									
REV	DESCRIPTION	QUALITY SYMBOLS	GENERAL TOLERANCES: (UNLESS SPECIFIED)	SCALE	DESIGN UNITS	TITLE:	DIMENSIONS:	SHT	REV
		MAJOR MINOR CRITICAL	MM INCH ± ± ± ± ± ±	5 : 1	MM INCH	H/D JOINT	THIRD ANGLE PROJECTION MM INCH MM INCH MM ONLY		
DRAFT WHERE APPLICABLE MUST REMAIN WITHIN DIMENSIONS			APPROVED BY & DATE	MATERIAL NO. 357602700		DRAWING NO. SD-35760-27*0		SHEET NO. 1 of 1	
CAD FILENAME			MOLEX INCORPORATED		KOREA		MX-A3		