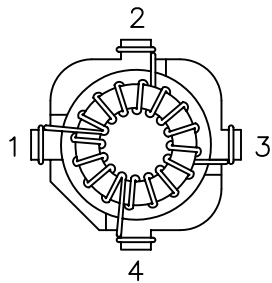
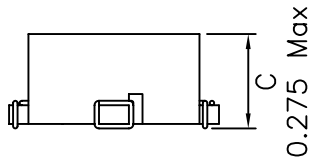
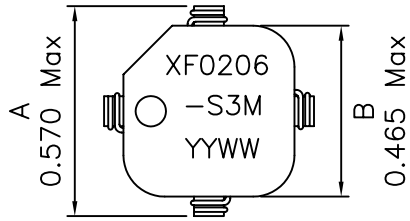
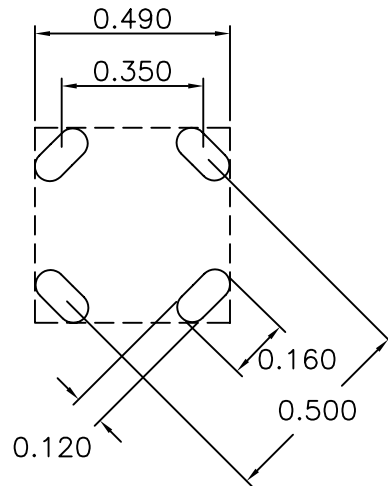


1. Mechanical Dimensions:

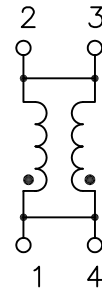


BOTTOM VIEW

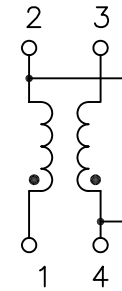


RECOMMENDED LAYOUT PATTERN
(TOP VIEW)

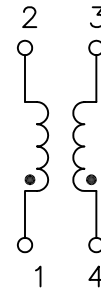
2. Schematic:



PARALLEL



SERIES



TRANSFORMER

Core: CSC CM 078 125

3. Electrical Specifications: @25°C

	PARALLEL	SERIES	10KHz	1.0V
OCL(NO DC):	19.60uH Typ	78.40uH Typ		
MAX DC I:	2.10Adc	1.05Adc		
DC RES:	0.055 OHMS MAX	0.220 OHMS MAX		
Isolation:	500 Vrms			

Notes:

1. Solderability: Leads shall meet MIL-STD-202, Method 208D for solderability.
2. Flammability: UL94V-0
3. ASTM oxygen index: > 28%
4. Temperature rating: 155°C. UL file E151556
5. Operating Temperature Range: 0°C to +70°C

XFMRs Inc.

Title:
DUAL SURFACE MOUNT INDUCTOR

UNLESS OTHERWISE SPECIFIED

P/N: 7XF0206-S3M

REV. A

TOLERANCES:

DWN.

罗振江

Aug-05-03

.xxx ±0.010

CHK.

廖玉坤

Aug-05-03

Dimensions in Inch

APP.

Isaiah M

Aug-05-03

DOC REV: A/2

THIS DOCUMENT IS STRICTLY NOT ALLOWED TO BE DUPLICATED WITHOUT AUTHORIZATION

SCALE 2:1 SHT 1 OF 1