

**PLEASE CHECK WWW.MOLEX.COM FOR LATEST PART INFORMATION**

**Part Number:** [0350689902](#)  
**Status:** **Active**  
**Description:** MP-Lock™ Quick Disconnect, Female, for 20x2, 20x18, 18x2 AWG (0.80-0.52mm<sup>2</sup>), Metal Strip, Tab 4.75 by 0.50mm (.187 by .020"), Pre-Tin Plated

**Documents:**

<a href="#">Drawing (PDF)</a>	<a href="#">Product Specification PS-35817-001 (PDF)</a>
<a href="#">Product Specification PS-35189-001 (PDF)</a>	<a href="#">Product Specification PS-68416-001 (PDF)</a>
<a href="#">Product Specification PS-35189-004 (PDF)</a>	<a href="#">RoHS Certificate of Compliance (PDF)</a>

**Agency Certification**

CSA	LR95446
UL	E92853

**General**

Product Family	Quick Disconnects
Series	35068
Crimp Quality Equipment	Yes
Product Name	MP-Lock™
Type	Quick Disconnect

**Physical**

Barrel Type	Open
Gender	Female
Glow-Wire Compliant	No
Insulation	None
Lock to Mating Part	Yes
Material - Metal	Brass
Material - Plating Mating	Tin
Material - Plating Termination	Tin
Orientation	Straight
Packaging Type	Reel
Plating min: Mating (µin)	32.00
Plating min: Mating (µm)	0.800
Plating min: Termination (µin)	32.00
Plating min: Termination (µm)	0.80
Polarized to Mating Part	Yes
Tab Thickness	0.51mm (.020")
Tab Width	4.75mm (.187")
Temperature Range - Operating	-40°C to +105°C
Termination Interface: Style	Crimp or Compression
Wire Insulation Diameter	5.50mm (.217") max.
Wire Size AWG	18, 20
Wire Size mm <sup>2</sup>	0.52 - 0.80

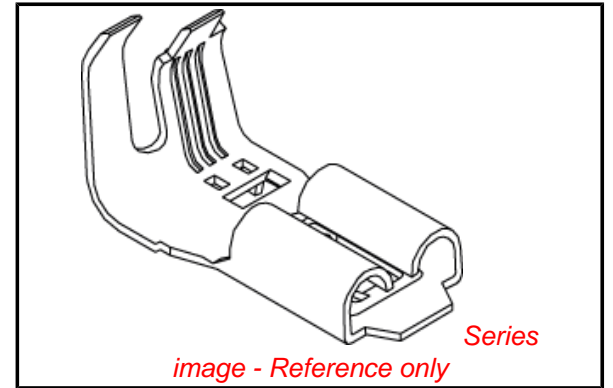
**Electrical**

Voltage - Maximum	300V
-------------------	------

**Material Info**

**Reference - Drawing Numbers**

Product Specification	PS-35189-001, PS-35189-004, PS-35817-001, PS-68416-001, RPS-35068-001, RPS-35189-002
Sales Drawing	SD-35068-9902



**EU RoHS**

**ELV and RoHS Compliant**  
**REACH SVHC**  
**Contains SVHC: No**  
**Halogen-Free Status**

**China RoHS**



**Need more information on product environmental compliance?**

Email [productcompliance@molex.com](mailto:productcompliance@molex.com)  
 For a multiple part number RoHS Certificate of Compliance, [click here](#)

Please visit the [Contact Us](#) section for any non-product compliance questions.

**Search Parts in this Series**

35068Series

**Use With**

35189 , 35817 , 35961

**Application Tooling | FAQ**

*Tooling specifications and manuals are found by selecting the products below. Crimp Height Specifications are then contained in the Application Tooling Specification document.*

**Global**

Description	Product #
Mini-Mac™	<a href="#">0638022000</a>
Applicator Rear Feed	

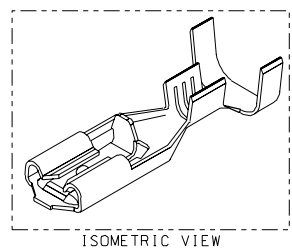
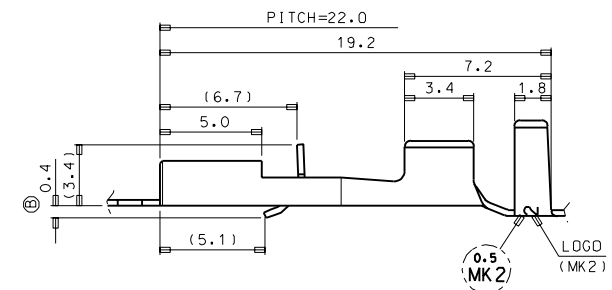
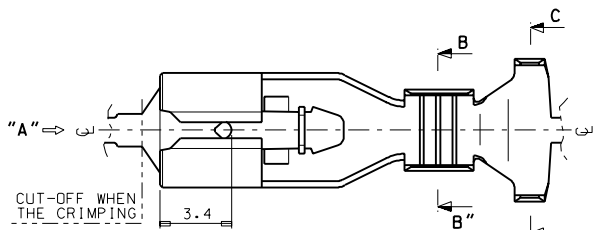
**Japan**

Description	Product #
End-Feed Applicator	<a href="#">0573653100</a>

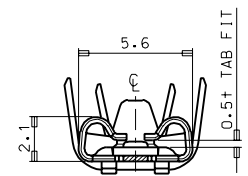
This document was generated on 04/15/2010

**PLEASE CHECK [WWW.MOLEX.COM](http://WWW.MOLEX.COM) FOR LATEST PART INFORMATION**

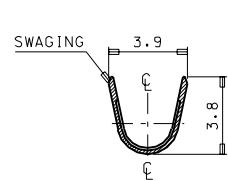
DWG. NO. SD-35068-9902  
 SIMILAR ITEM  
 PROJECT NO. .187 MP-L-LOCK CONN.  
 DO NOT SCALE DRAWING DIMENSION IN METRIC



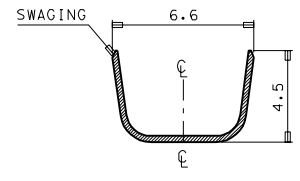
- NOTES
1. MATERIAL : BRASS, 0.30mm THICKNESS
  2. FINISH : PRE-PLATED TIN
  3. MATING TAB THICKNESS : 0.50mm
  4. RECOMMENDED LENGTH OF WIRE STRIP IS 4.4-5.0mm.
  5. APPLICABLE WIRE : AWG #20+#20  
AWG #20+#18  
AWG #18+#18



VIEW "A"



SEC' : B-B"



SEC' : C-C"

REVISED	EC NO. KOR1998-0101 DRWG. J.-S.KANG 98/08/24 CHKD. B.-K. CHO1 APPR. C.-W. LEE	QUALITY SYMBOLS MAJOR CRITICAL	GENERAL TOLERANCES (UNLESS SPECIFIED)		SCALE 6/1	DESIGN UNITS	DIMENSIONS:		SHT	REV
					<input checked="" type="checkbox"/> mm <input type="checkbox"/> INCH	<input checked="" type="checkbox"/> mm <input type="checkbox"/> INCH	<input type="checkbox"/> INCH	<input type="checkbox"/> mm	<input type="checkbox"/> mm ONLY	REVISE ON CAD ONLY
C	REV	DESCRIPTION	4 PLACES	±0.	±.	DRAWN BY B. DATE		THIRD ANGLE PROJECTION TITLE: .187 MP-L-LOCK TM'L(L) (0.5+ TAB FIT)		
			3 PLACES	±0.	±.	J. S. KANG 97/12/02 CHECKED BY & DATE B. K. CHO1				
			2 PLACES	±0.2	±.	APPROVED BY & DATE C. W. LEE		MOLEX INCORPORATED KOREA		
			1 PLACE	±0.3	±.	ANGLAR: ± 1° CAD FILENAME s35068d.dgn		MATERIAL NO. 35068-9902	DRAWING NO. SD-35068-9902	SHEET NO. 1 of 1
DRAFT WHERE APPLICABLE MUST REMAIN WITHIN DIMENSIONS			THIS DRAWING CONTAINS INFORMATION THAT IS PROPRIETARY TO MOLEX INCORPORATED AND SHOULD NOT BE USED WITHOUT WRITTEN PERMISSION.						SIZE B	