

Resistor/Capacitor Networks, Molded SIP



FEATURES

- Custom schematics available.
- NPO or X7R capacitors for line terminator.
- Wide operating temperature range.
- Molded epoxy case.
- Tin/plated phosphor bronze terminals.
- Solderability per MIL-STD-202 method 208E.
- Marking resistance to solvents per MIL-STD-202 method 215.

ELECTRICAL SPECIFICATIONS - RESISTORS

Resistance Range: 50 ohms to 1 kilohm. Others available.

Resistance Tolerance: $\pm 2\%$, $\pm 5\%$ standard. $\pm 1\%$ available.

Temperature Coefficient of Resistance: $\pm 150\text{ppm}/^\circ\text{C}$.

Operating Temperature Range: -55°C to $+125^\circ\text{C}$.

Operating Voltage: 50VDC maximum. Higher voltage available.

ELECTRICAL SPECIFICATIONS - CAPACITORS

Type: NPO or X7R.

NPO Capacitance Range Standard: 33pF - 3900pF, other values available.

X7R Capacitance Range: 470pF - 0.1 μF , other values available.

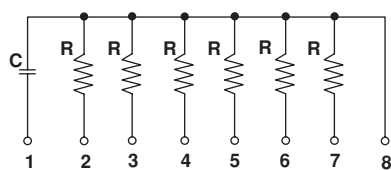
Tolerance: NPO Type = $\pm 10\%$, $\pm 20\%$.

X7R Type = $\pm 10\%$, $\pm 20\%$. Tighter tolerance available. Consult factory at 818-781-1642.

Voltage Rating: 50VDC. Higher voltage available.

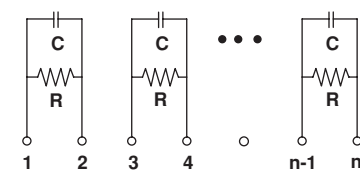
SCHEMATICS

SCHEMATIC 10

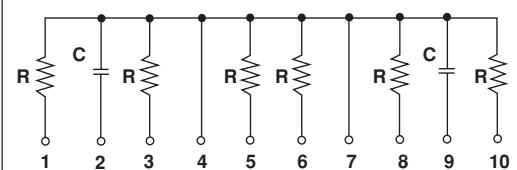


10K ECL terminator network

SCHEMATIC 20



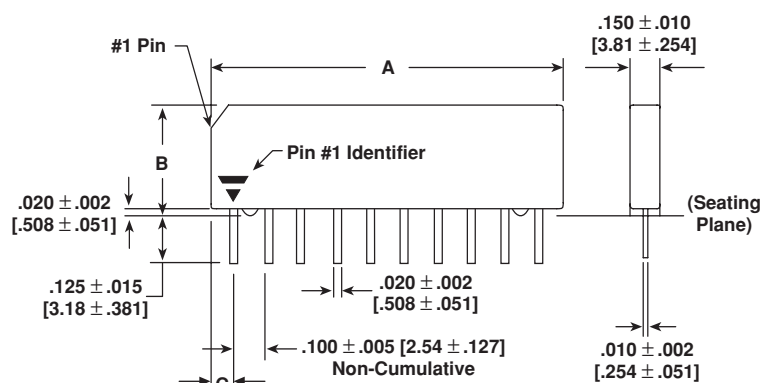
SCHEMATIC 30



100K ECL terminator network

NOTE: Custom schematics available.

DIMENSIONS in inches [millimeters]



NUMBER OF PINS	A $\pm .010$ [.254]	B $\pm .010$ [.254]	C $\pm .010$ [.254]
8	.780 [19.81]	.345 [8.76]	.040 [1.02]
10	1.040 [26.42]	.346 [8.79]	.075 [1.91]

ORDERING INFORMATION

MRCN MODEL	XX NUMBER OF PINS	XX SCHEMATIC	XXX RESISTANCE VALUE (Ohms)	X RESISTANCE TOLERANCE	XXX CAPACITANCE VALUE (pF)	X CAPACITANCE TOLERANCE*
			First two digits are significant, third digit signifies number of zeros to follow.	F = $\pm 1\%$ G = $\pm 2\%$ J = $\pm 5\%$	First two digits are significant, third digit signifies number of zeros to follow.	K = $\pm 10\%$ M = $\pm 20\%$

*Tighter tolerance available.