

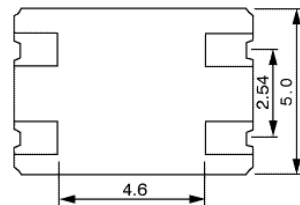
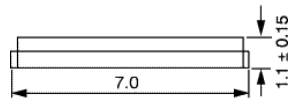
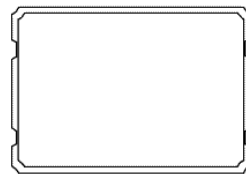


**VITE**  
TECHNOLOGY  
EXPRESS

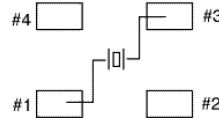
A VECTOR IN INTERNATIONAL COMPANY

620 North Lindenwood Drive  
Olathe, KS 66062 USA  
Tel: 913-829-1777 Fax: 913-829-9350

<http://www.vectron.com>



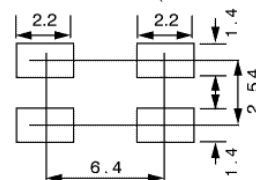
**CONNECTIONS**



**PIN CONNECTIONS**  
#1, #3 : X'tal, #2, #4 : NC



**LAND PATTERN (EXAMPLE)**



**VXC4-1034R-25M000**

- Package:** 7 x 5 x 1.1 mm 4 pads
- Frequency:** 25.000 MHz
- Mode:** Fundamental
- Stability:** ± 50 PPM at -20C to +70C
- Load Capacitance CL:** 20 pF
- STD Calibration Tolerance:** ± 30 PPM at +25C
- ESR:** 30 Ohms Maximum at 100 uW
- Shunt Capacitance C0:** 7 pF Maximum
- Absolute Drive Level:** 300 uW, 100 uW Correlation
- Crystal Aging:** < 5 PPM/1st year
- Standard Packaging:** Tape & Reel (1,000 pc minimum)

Rev2, 06/11/01