

**PLEASE CHECK WWW.MOLEX.COM FOR LATEST PART INFORMATION**

**Part Number:** [0357607400](#)  
**Status:** **Active**  
**Description:** Wire Splice, 8-10 AWG, Un-plated

**Documents:**

[Drawing \(PDF\)](#) [Product Specification PS-35760-003 \(PDF\)](#)  
[Packaging Specification \(PDF\)](#) [RoHS Certificate of Compliance \(PDF\)](#)

**General**

Product Family	Splices
Series	<a href="#">35760</a>
Crimp Quality Equipment	Yes
Mil-Spec	N/A
Product Name	N/A

**Physical**

Barrel Type	Open
Insulation	None
Material - Metal	Brass
Packaging Type	Reel
Temperature Range - Operating	-30°C to +105°C
Wire Insulation Diameter	3.5mm (.138")
Wire Size AWG	10, 8
Wire Size mm <sup>2</sup>	6.00 - 8.40

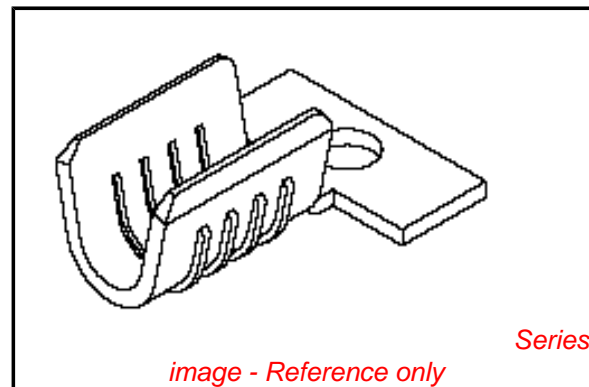
**Electrical**

Voltage - Maximum	200V AC (RMS)/DC
-------------------	------------------

**Material Info**

**Reference - Drawing Numbers**

Product Specification	PS-35760-003
Sales Drawing	SD-35760-004



**EU RoHS**

**ELV and RoHS  
Compliant**  
**REACH SVHC  
Contains SVHC: No**  
**Halogen-Free  
Status**

**China RoHS**

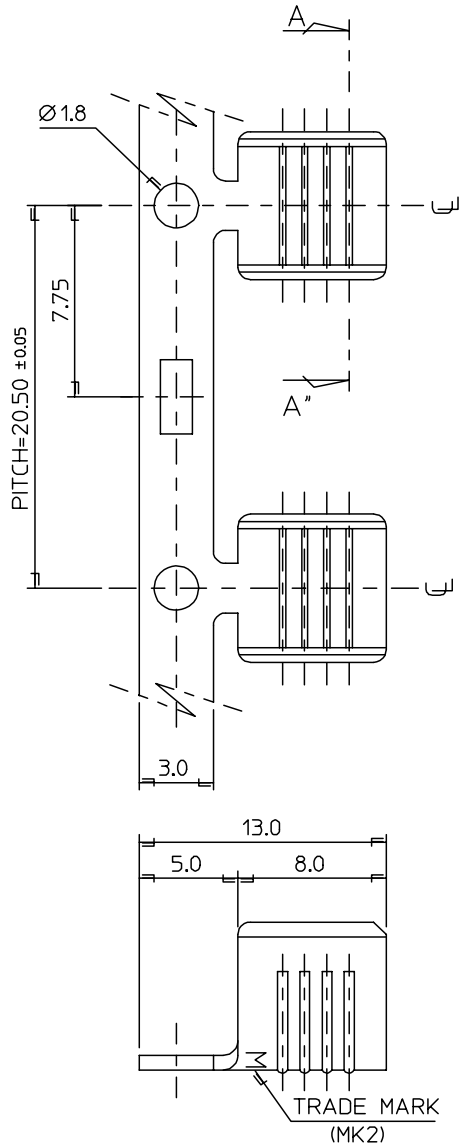


**Need more information on product  
environmental compliance?**

Email [productcompliance@molex.com](mailto:productcompliance@molex.com)  
 For a multiple part number RoHS Certificate of  
 Compliance, [click here](#)

Please visit the [Contact Us](#) section for any  
 non-product compliance questions.

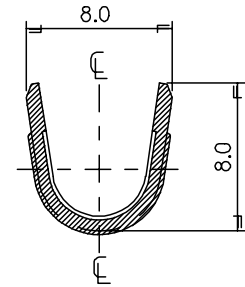
**Search Parts in this Series**  
[35760Series](#)



NOTES

1. MATERIAL : BRASS THICKNESS : 0.6mm
2. MATERIAL NO.

PART NO.	FINISH	WIRE RANGE	QUANTITY
35760-7400	UNPLATED	6.0-8.4mm <sup>2</sup>	1,500/REEL
35760-7410	POST PLATED TIN		



SEC' : A-A''

DO NOT SCALE DRAWING  
DIMENSION IN METRIC

DWG. NO.  
SD-35760-004

SIMILAR ITEM

PROJECT NO.

c

B

ADDITION OF OPTION EC:NDKOR2006-0064 DRWANSY.PARK 04/12/16 CHKKBC.YOON 05/12/16 APPR:SHCHOI 05/12/16	QUALITY SYMBOLS MAJOR CRITICAL	GENERAL TOLERANCES: (UNLESS SPECIFIED)		SCALE 5:1	DESIGN UNITS <input checked="" type="checkbox"/> mm <input type="checkbox"/> INCH	THIRD ANGLE PROJECTION	DIMENSIONS: <input type="checkbox"/> mm <input type="checkbox"/> INCH <input type="checkbox"/> mm <input checked="" type="checkbox"/> mm ONLY	SHT	REV	
		4 PLACES ±0.	±.	DRAWN BY & DATE J.S.KANG 93/10/08	TITLE: WIRE SPLICE(L)					
B	DESCRIPTION	3 PLACES ±0.	±.	CHECKED BY & DATE B.K.CHOI 93/10/08	MATERIAL NO. SEE TABLE				DRAWING NO. SD-35760-004	SHEET NO. 1 OF 1
		2 PLACES ±0.20	±.	APPROVED BY & DATE C.W.LEE 93/10/08	MATERIAL NO. SEE TABLE				DRAWING NO. SD-35760-004	SHEET NO. 1 OF 1
	REV	1 PLACE ±0.30	±.	CAD FILENAME SD35760.DGN	MATERIAL NO. SEE TABLE				DRAWING NO. SD-35760-004	SHEET NO. 1 OF 1
		ANGULAR: ± 0.15 °		THIS DRAWING CONTAINS INFORMATION THAT IS PROPRIETARY TO MOLEX INCORPORATED AND SHOULD NOT BE USED WITHOUT WRITTEN PERMISSION.				SIZE B		
		DRAFT WHERE APPLICABLE MUST REMAIN WITHIN DIMENSIONS						MX-A3		

F

E

D

C

B

A

MX-A3