

## LM2936-2.5

# Ultra-Low Quiescent Current 2.5V Regulator

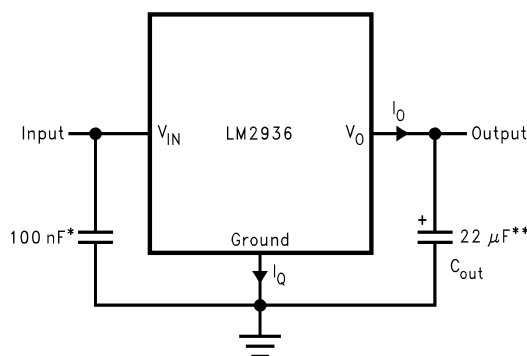
### General Description

The LM2936-2.5 ultra-low quiescent current regulator features low dropout voltage and low current in the standby mode. With less than 25  $\mu\text{A}$  quiescent current at a 100  $\mu\text{A}$  load, the LM2936-2.5 is ideally suited for automotive and other battery operated systems. The LM2936-2.5 retains all of the features that are common to low dropout regulators including a low dropout PNP pass device, short circuit protection, reverse battery protection, and thermal shutdown. The LM2936-2.5 has a 40V maximum operating voltage limit, a  $-40^{\circ}\text{C}$  to  $+125^{\circ}\text{C}$  operating temperature range, and  $\pm 3\%$  output voltage tolerance over the entire output current, input voltage, and temperature range. The LM2936-2.5 is available in a TO-92 package, a SO-8 surface mount package, as well as SOT-223 and TO-252 surface mount power packages.

### Features

- Ultra low quiescent current ( $I_Q \leq 25 \mu\text{A}$  for  $I_O \leq 100 \mu\text{A}$ )
- Fixed 2.5V, 50 mA output
- Output tolerance  $\pm 3\%$  over line, load, and temperature
- Dropout voltage typically 200 mV @  $I_O = 50 \text{ mA}$
- Reverse battery protection
- $-50\text{V}$  reverse transient protection
- Internal short circuit current limit
- Internal thermal shutdown protection
- 40V operating voltage limit

### Typical Application

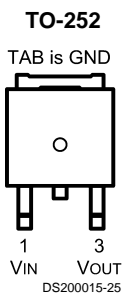


DS200015-1

\* Required if regulator is located more than 2" from power supply filter capacitor.

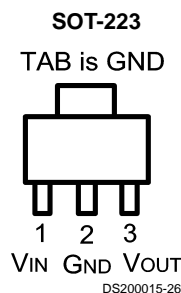
\*\* Required for stability. Must be rated for 22  $\mu\text{F}$  minimum over intended operating temperature range. Effective series resistance (ESR) is critical, see curve. Locate capacitor as close as possible to the regulator output and ground pins. Capacitance may be increased without bound.

### Connection Diagrams



Top View

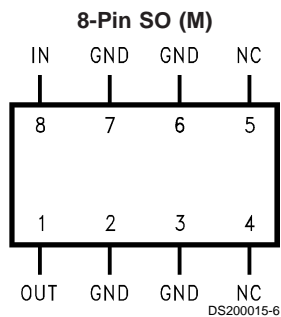
Order Number LM2936DT-2.5  
See NS Package Number TD03B



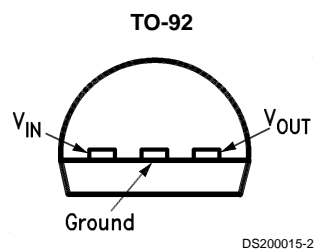
Top View

Order Number LM2936MP-2.5  
See NS Package Number MA04A

# **Connection Diagrams** (Continued)



**Top View**  
**Order Number LM2936M-2.5**  
**See NS Package Number M08A**



**Bottom View**  
**Order Number LM2936Z-2.5**  
**See NS Package Number Z03A**

**Absolute Maximum Ratings** (Note 1)

If Military/Aerospace specified devices are required, please contact the National Semiconductor Sales Office/Distributors for availability and specifications.

|                                       |                    |
|---------------------------------------|--------------------|
| Input Voltage (Survival)              | +60V, -50V         |
| ESD Susceptibility (Note 2)           | 2000V              |
| Power Dissipation (Note 3)            | Internally limited |
| Junction Temperature ( $T_{Jmax}$ )   | 150°C              |
| Storage Temperature Range             | -65°C to +150°C    |
| Lead Temperature (Soldering, 10 sec.) | 260°C              |

**Operating Ratings**

|                                     |                 |
|-------------------------------------|-----------------|
| Operating Temperature Range         | -40°C to +125°C |
| Maximum Input Voltage (Operational) | 40V             |
| TO-92 (Z03A) $\theta_{JA}$          | 195°C/W         |
| SO-8 (M08A) $\theta_{JA}$           | 140°C/W         |
| SO-8 (M08A) $\theta_{JC}$           | 45°C/W          |
| TO-252 (TD03B) $\theta_{JA}$        | 126°C/W         |
| TO-252 (TD03B) $\theta_{JC}$        | 6°C/W           |
| SOT-223 (MA04A) $\theta_{JA}$       | 149°C/W         |
| SOT-223 (MA04A) $\theta_{JC}$       | 36°C/W          |

**Electrical Characteristics**

$V_{IN} = 14V$ ,  $I_O = 10\text{ mA}$ ,  $T_J = 25^\circ\text{C}$ , unless otherwise specified. **Boldface** limits apply over entire operating temperature range

| Parameter                                     | Conditions  | Typical<br>(Note 4) | Tested<br>Limit<br>(Note 5) | Units         |
|---|---|---------------------|-----------------------------|---------------|
| Output Voltage                                | $4.0V \leq V_{IN} \leq 26V$ ,<br>$100\mu A \leq I_O \leq 50mA$ (Note 6) |                     | <b>2.425</b>                | $V_{min}$     |
|   |   | 2.5                 |                             | V             |
|   |   |                     | <b>2.575</b>                | $V_{max}$     |
| Quiescent Current                             | $I_O = 100\mu A$ , $8V \leq V_{IN} \leq 24V$                            | 15                  | 25                          | $\mu A_{max}$ |
|   | $I_O = 10\text{ mA}$ , $8V \leq V_{IN} \leq 24V$                        | 0.20                | 0.50                        | $mA_{max}$    |
|   | $I_O = 50\text{ mA}$ , $8V \leq V_{IN} \leq 24V$                        | 1.5                 | 2.5                         | $mA_{max}$    |
| Line Regulation                               | $9V \leq V_{IN} \leq 16V$   | 5                   | 10                          | $mV_{max}$    |
|   | $6V \leq V_{IN} \leq 40V$ , $I_O = 1\text{ mA}$                         | 10                  | 30                          |               |
| Load Regulation                               | $100\mu A \leq I_O \leq 5\text{ mA}$                                    | 10                  | 30                          | $mV_{max}$    |
|   | $5\text{ mA} \leq I_O \leq 50\text{ mA}$                                | 10                  | 30                          |               |
| Dropout Voltage                               | $I_O = 100\mu A$  | 0.05                | 0.10                        | $V_{max}$     |
|   | $I_O = 50\text{ mA}$  | 0.20                | 0.40                        | $V_{max}$     |
| Short Circuit Current                         | $V_O = 0V$  | 120                 | 65                          | $mA_{min}$    |
|   |   |                     | 250                         | $mA_{max}$    |
| Output Impedance                              | $I_O = 30\text{ mAdc}$ and $10\text{ mArms}$ ,<br>$f = 1000\text{ Hz}$  | 450                 |                             | $m\Omega$     |
| Output Noise Voltage                          | 10 Hz–100 kHz   | 500                 |                             | $\mu V_{rms}$ |
| Long Term Stability                           |   | 20                  |                             | mV/1000 Hr    |
| Ripple Rejection                              | $V_{ripple} = 1\text{ V}_{rms}$ , $f_{ripple} = 120\text{ Hz}$          | 60                  | 40                          | $dB_{min}$    |
| Reverse Polarity<br>DC Input Voltage          | $R_L = 500\Omega$ , $V_O \geq -0.3V$                                    |                     | -15                         | $V_{min}$     |
| Reverse Polarity<br>Transient Input Voltage   | $R_L = 500\Omega$ , $T = 1\text{ ms}$                                   | -80                 | -50                         | $V_{min}$     |
| Output Leakage with<br>Reverse Polarity Input | $V_{IN} = -15V$ , $R_L = 500\Omega$                                     | -0.1                | -600                        | $\mu A_{max}$ |

**Note 1:** Absolute Maximum Ratings indicate limits beyond which damage to the device may occur. DC and AC electrical specifications do not apply when operating the device beyond its specified operating ratings.

**Note 2:** Human body model, 100 pF discharge through a 1.5 k $\Omega$  resistor.

**Note 3:** The maximum power dissipation is a function of  $T_{Jmax}$ ,  $\theta_{JA}$ , and  $T_A$ . The maximum allowable power dissipation at any ambient temperature is  $P_D = (T_{Jmax} - T_A)/\theta_{JA}$ . If this dissipation is exceeded, the die temperature will rise above 150°C and the LM2936 will go into thermal shutdown.

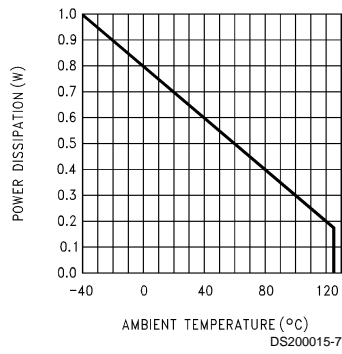
**Note 4:** Typicals are at 25°C (unless otherwise specified) and represent the most likely parametric norm.

**Note 5:** Tested limits are guaranteed to National's AOQL (Average Outgoing Quality Level) and 100% tested.

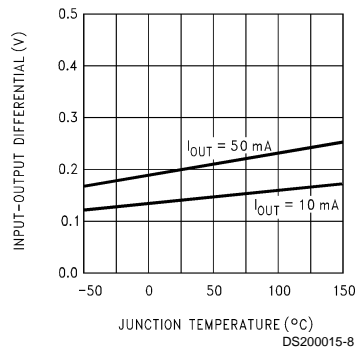
**Note 6:** To ensure constant junction temperature, pulse testing is used.

## Typical Performance Characteristics

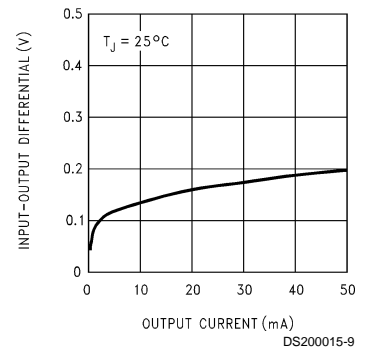
**Maximum Power Dissipation (TO-92)**



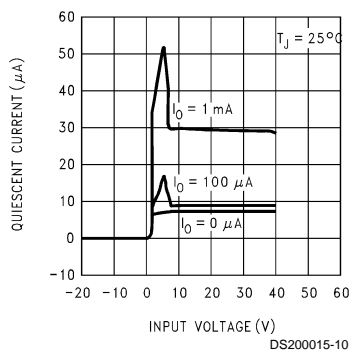
**Dropout Voltage**



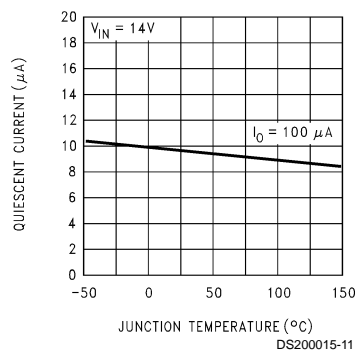
**Dropout Voltage**



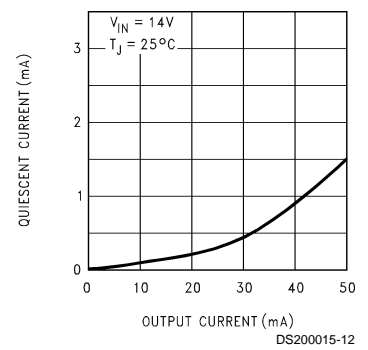
**Quiescent Current**



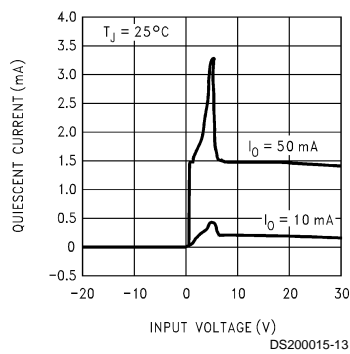
**Quiescent Current**



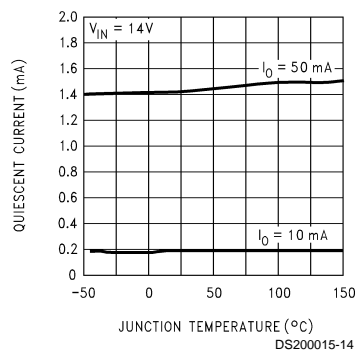
**Quiescent Current**



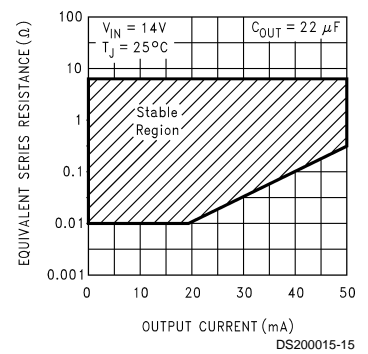
**Quiescent Current**



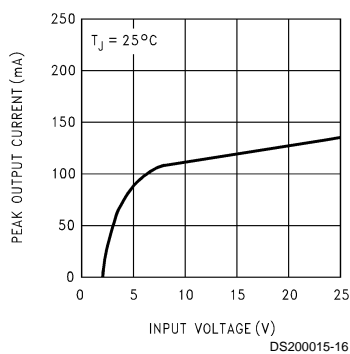
**Quiescent Current**



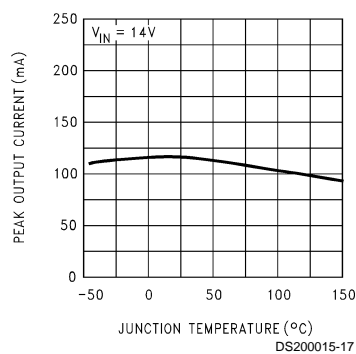
**Output Capacitor ESR**



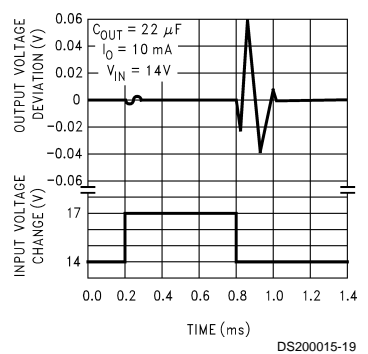
**Peak Output Current**



**Peak Output Current**

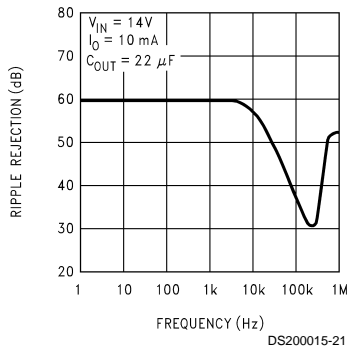


**Line Transient Response**

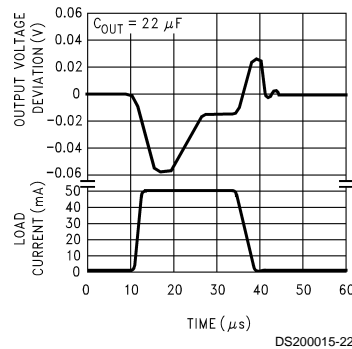


## Typical Performance Characteristics (Continued)

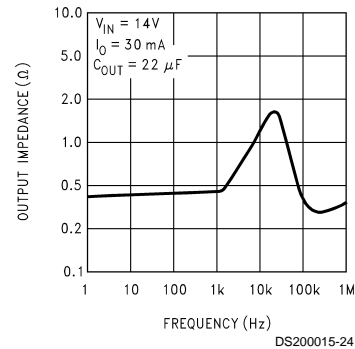
### Ripple Rejection



### Load Transient Response



### Output Impedance



## Applications Information

Unlike other PNP low dropout regulators, the LM2936 remains fully operational to 40V. Owing to power dissipation characteristics of the available packages, full output current cannot be guaranteed for all combinations of ambient temperature and input voltage.

The junction to ambient thermal resistance  $\theta_{JA}$  rating has two distinct components: the junction to case thermal resistance rating  $\theta_{JC}$ ; and the case to ambient thermal resistance rating  $\theta_{CA}$ . The relationship is defined as:  $\theta_{JA} = \theta_{JC} + \theta_{CA}$ .

For the SO-8 and TO-252 surface mount packages the  $\theta_{JA}$  rating can be improved by using the copper mounting pads on the printed circuit board as a thermal conductive path to extract heat from the package.

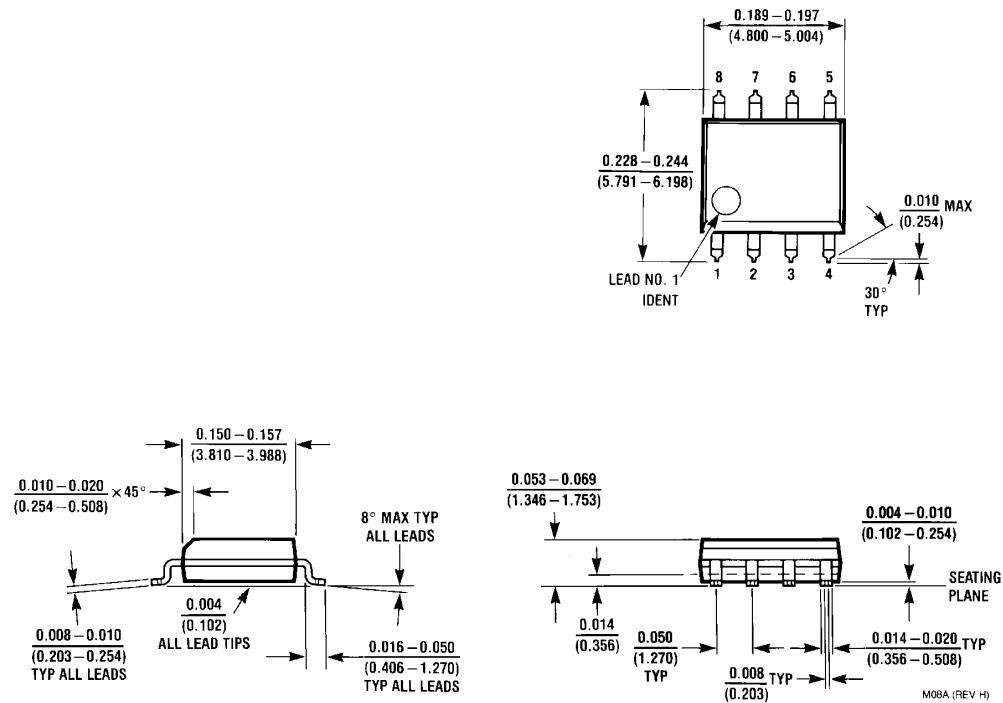
On the SO-8 package the four ground pins are thermally connected to the backside of the die. Adding approximately 0.04 square inches of 2 oz. copper pad area to these four pins will improve the  $\theta_{JA}$  rating to approximately 110°C/W. If this extra pad area is placed directly beneath the package there should not be any impact on board density.

On the TO-252 package the ground tab is thermally connected to the backside of the die. Adding 1 square inch of 2 oz. copper pad area directly under the ground tab will improve the  $\theta_{JA}$  rating to approximately 50°C/W.

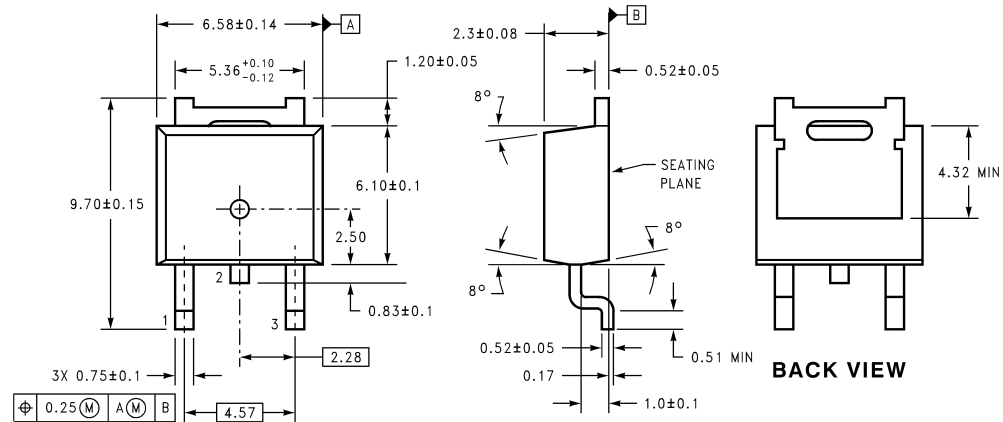
While the LM2936 has an internally set thermal shutdown point of typically 150°C, this is intended as a safety feature only. Continuous operation near the thermal shutdown temperature should be avoided as it may have a negative affect on the life of the device.

While the LM2936-2.5 will survive input transients to +60V, output regulation is not guaranteed for input voltages greater than 40V. The LM2936 will not withstand a output short circuit with the input above 40V because of safe operating area limitations in the internal PNP pass device. With input voltages above 60V the LM2936 will break down with catastrophic effects on the regulator and possibly the load as well. Do not use this device in a design where the input operating voltage may exceed 40V, or where transients are likely to exceed 60V.

# Physical Dimensions inches (millimeters) unless otherwise noted



**8-Lead Small Outline Molded Package (M)  
NS Package Number M08A**

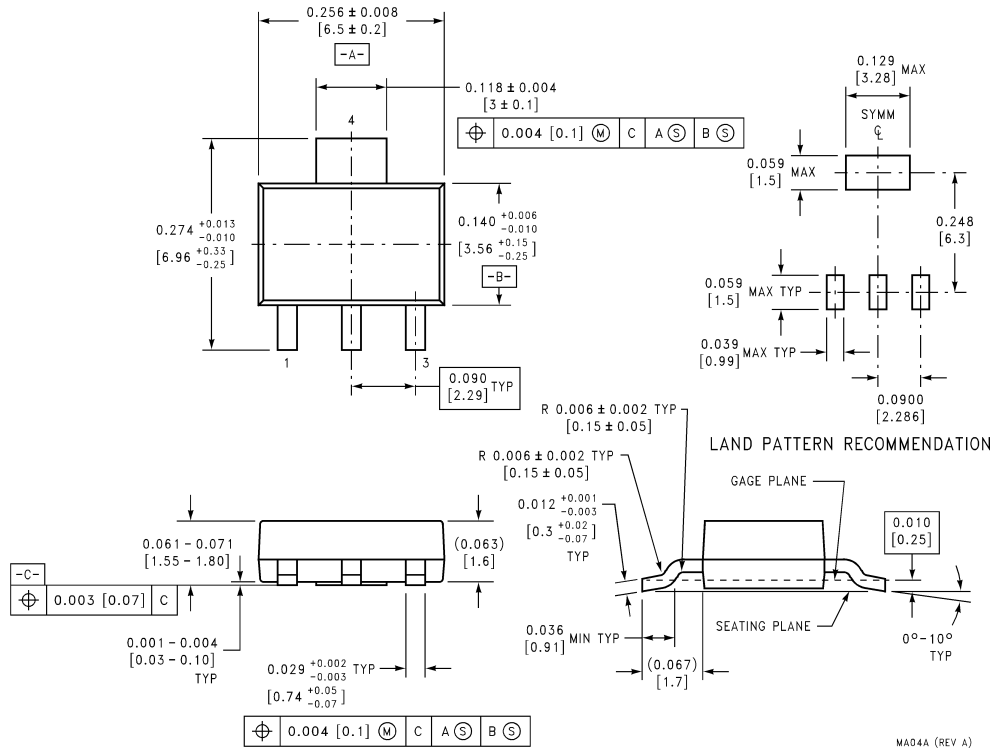


DIMENSIONS ARE IN MILLIMETERS

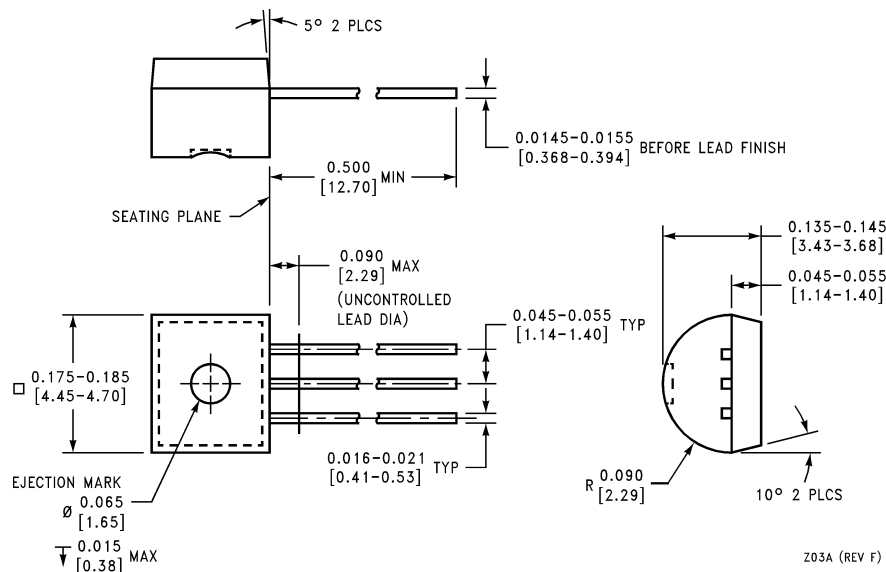
**TO-252 Package (DT)  
NS Package Number TD03B**

TD03B (REV A)

# Physical Dimensions inches (millimeters) unless otherwise noted (Continued)



**SOT-223 Package (MP)**  
**NS Package Number MA04A**



**3-Lead TO-92 Plastic Package (Z)**  
**NS Package Number Z03A**

## Notes

**LIFE SUPPORT POLICY**

NATIONAL'S PRODUCTS ARE NOT AUTHORIZED FOR USE AS CRITICAL COMPONENTS IN LIFE SUPPORT DEVICES OR SYSTEMS WITHOUT THE EXPRESS WRITTEN APPROVAL OF THE PRESIDENT AND GENERAL COUNSEL OF NATIONAL SEMICONDUCTOR CORPORATION. As used herein:

1. Life support devices or systems are devices or systems which, (a) are intended for surgical implant into the body, or (b) support or sustain life, and whose failure to perform when properly used in accordance with instructions for use provided in the labeling, can be reasonably expected to result in a significant injury to the user.
2. A critical component is any component of a life support device or system whose failure to perform can be reasonably expected to cause the failure of the life support device or system, or to affect its safety or effectiveness.



**National Semiconductor Corporation**  
Americas  
Tel: 1-800-272-9959  
Fax: 1-800-737-7018  
Email: support@nsc.com  
www.national.com

**National Semiconductor Europe**  
Fax: +49 (0) 180-530 85 86  
Email: europe.support@nsc.com  
Deutsch Tel: +49 (0) 69 9508 6208  
English Tel: +44 (0) 870 24 0 2171  
Français Tel: +33 (0) 1 41 91 8790

**National Semiconductor Asia Pacific Customer Response Group**  
Tel: 65-2544466  
Fax: 65-2504466  
Email: ap.support@nsc.com

**National Semiconductor Japan Ltd.**  
Tel: 81-3-5639-7560  
Fax: 81-3-5639-7507