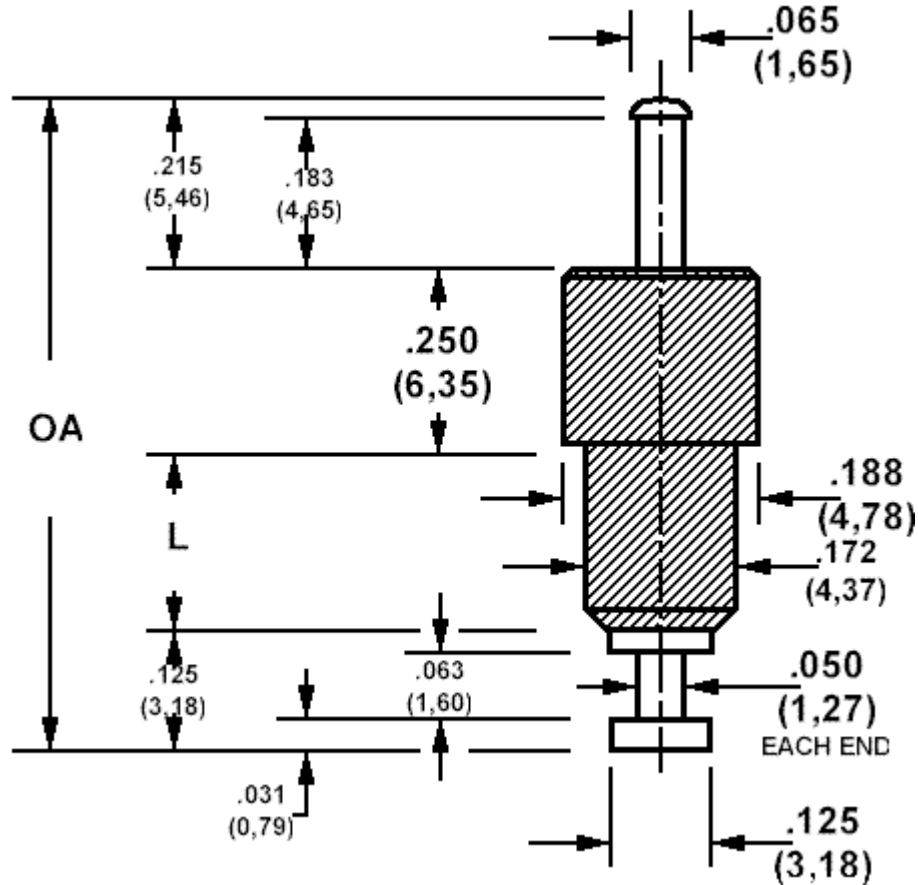


571-4235 Insulated solder terminal, Turreted, Feed thru

Recommended mounting hole .158 (4,01)



How to order code

571-4235-01-YY-19

Basic Part No (XX = panel thickness, YY = plating finish. See tables for options)

Basic Part No.		OA (ref)	L	Panel Thickness (XX)
571-4235	-01	0.865 (21,97)	.275 (6,99)	.031 (0,79) to .234 (5,94)

Component	Material	Finish (YY)	
		-01	-05
Terminal	Brass	Silver	Electro Solder
Insulator	Teflon - white		

Additional Specifications	
Flashover VRMS at Sea Level	7000
Capacitance (pF)	0.5

Teflon is a registered trademark of Dupont