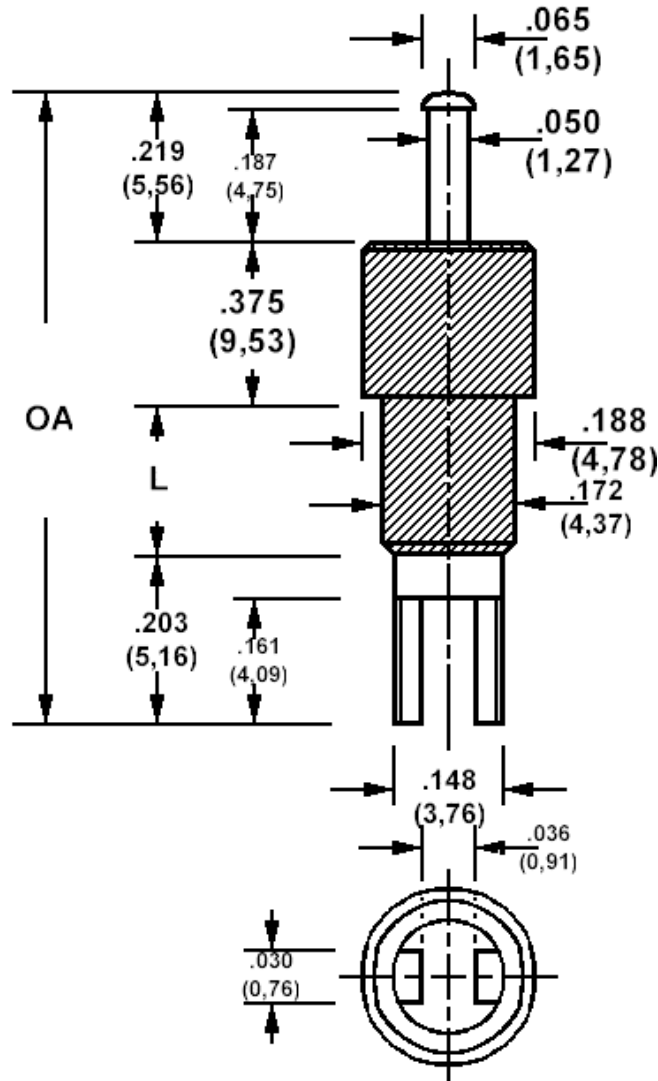


## 571-4256 Insulated solder terminal, Slotted, Feed thru

Recommended mounting hole .158 (4,01)



How to order code  
**571-4256-01-YY-19**

Basic Part No (XX = panel thickness, YY = plating finish. See tables for options)

| Basic Part No. |     | OA (ref)      | L            | Panel Thickness (XX)       |
|----------------|-----|---------------|--------------|----------------------------|
| 571-4256       | -01 | 1.197 (30,40) | .400 (10,16) | .031 (0,79) to .250 (6,35) |

| Component | Material       | Finish <sub>1</sub> (YY) |                |
|-----------|----------------|--------------------------|----------------|
|           |                | -01                      | -05            |
| Terminal  | Brass          | Silver                   | Electro Solder |
| Insulator | Teflon - white |                          |                |

| Additional Specifications   |      |
|-----------------------------|------|
| Flashover VRMS at Sea Level | 9000 |
| Capacitance (pF)            | 0.5  |

Teflon is a registered trademark of Dupont