

**CSHD10-100C**  
**SURFACE MOUNT**  
**DUAL, COMMON CATHODE**  
**HIGH VOLTAGE**  
**SILICON SCHOTTKY RECTIFIERS**  
**10 AMP, 100 VOLTS**



[www.centrasemi.com](http://www.centrasemi.com)

**DESCRIPTION:**

The CENTRAL SEMICONDUCTOR CSHD10-100C is a Silicon Schottky Rectifier designed for surface mount high voltage applications requiring a low forward voltage drop. This device is manufactured with two 5 Amp Schottky Rectifiers assembled in a common cathode configuration.



**MARKING: FULL PART NUMBER**

**MAXIMUM RATINGS PER DEVICE:** ( $T_A=25^{\circ}\text{C}$  unless otherwise noted)

	<b>SYMBOL</b>		<b>UNITS</b>
Peak Repetitive Reverse Voltage	$V_{RRM}$	100	V
DC Blocking Voltage	$V_R$	100	V
Average Rectified Forward Current ( $T_C=75^{\circ}\text{C}$ )	$I_O$	10	A
Peak Forward Surge Current, $t_p=8.3\text{ms}$	$I_{FSM}$	100	A
Operating and Storage Junction Temperature	$T_J, T_{stg}$	-65 to +175	$^{\circ}\text{C}$
Thermal Resistance	$\theta_{JC}$	3.0	$^{\circ}\text{C/W}$

**ELECTRICAL CHARACTERISTICS PER DIODE:** ( $T_A=25^{\circ}\text{C}$  unless otherwise noted)

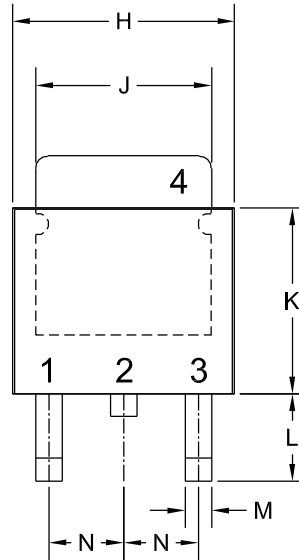
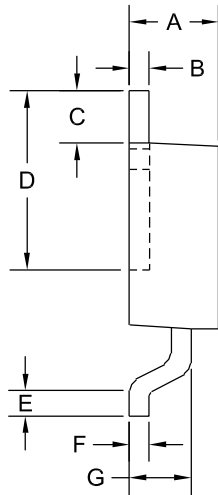
<b>SYMBOL</b>	<b>TEST CONDITIONS</b>	<b>TYP</b>	<b>MAX</b>	<b>UNIT</b>
$I_R$	$V_R=100\text{V}$		50	$\mu\text{A}$
$I_R$	$V_R=100\text{V}, T_J=100^{\circ}\text{C}$		20	mA
$V_F$	$I_F=5.0\text{A}$		0.8	V
$V_F$	$I_F=10\text{A}$	0.9		V

CSHD10-100C

**SURFACE MOUNT  
DUAL, COMMON CATHODE  
HIGH VOLTAGE  
SILICON SCHOTTKY RECTIFIERS  
10 AMP, 100 VOLTS**



**DPAK RECTIFIER CASE - MECHANICAL OUTLINE**

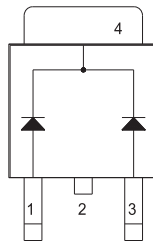


R2

**LEAD CODE:**

- 1) Anode 1
  - 2) Cathode
  - 3) Anode 2
  - 4) Cathode
- Pin 2 is Common to Tab (4)

**MARKING: FULL PART NUMBER**



SYMBOL	DIMENSIONS		MILLIMETERS	
	MIN	MAX	MIN	MAX
A	0.083	0.108	2.10	2.75
B	0.016	0.024	0.40	0.60
C	0.063		1.60	
D	0.203	0.219	5.15	5.55
E	0.039		1.00	
F	0.020		0.50	
G	0.051	0.071	1.30	1.80
H	0.248	0.268	6.30	6.80
J	0.197	0.217	5.00	5.50
K	0.209	0.224	5.30	5.70
L	0.090	0.106	2.30	2.70
M	0.012	0.031	0.30	0.80
N	0.091		2.30	

DPAK RECTIFIER (REV: R2)

R0 (9-November 2010)