



Features

- ◇ For IF SAW filter
- ◇ Balance-ended operation
- ◇ Ceramic Surface Mount Package
- ◇ Small size
- ◇ RoHS compliant (2002/95/EC), Pb-free

Specifications

Parameter	Unit	Minimum	Typical	Maximum
Center Frequency	MHz	-	173	-
Insertion Loss	dB	-	10.5	11
1 dB Bandwidth	MHz	21	23.38	-
3 dB Bandwidth	MHz	-	24.64	-
Passband Variation($f_0 \pm 10.5\text{MHz}$)	dB	-	0.8	1
Absolute Delay	usec	-	0.79	-
Ultimate Rejection	10~145MHz	dB	45	-
	145~154MHz	dB	10	-
	190~200MHz	dB	10	-
	200~1000MHz	dB	45	-
Material Temperature coefficient	KHz/°C	-16.26		
Substrate Material	-	YZ LN		
Ambient Temperature	°C	25		
Operating Temperature Range	°C	-40		+90
DC Voltage	V	0		
Input Power	dBm	-	-	10
ESD Class	-	1A		
Package Size	SMD7.0*5.0			

Notes:

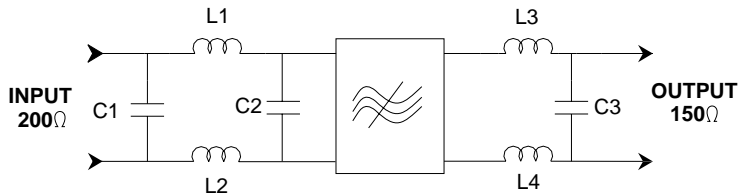
1. All specifications are based on the test circuit shown;
2. In production, all specifications are measured by Agilent Network analyzer and full 4 port calibration at room temperature;
3. Electrical margin has been built into the design to account for the variations due to temperature drift and manufacturing tolerances;
4. This is the optimum impedance in order to achieve the performance show.



SIPAT Co., Ltd.
(CETC No.26 Research Institute)
#14 Nanping Huayuan Road,
Chongqing, China, 400060

Part Number	LBN17301		
Rev. Date	2010-09-02		
Ver.	1.0	Page 1/3	

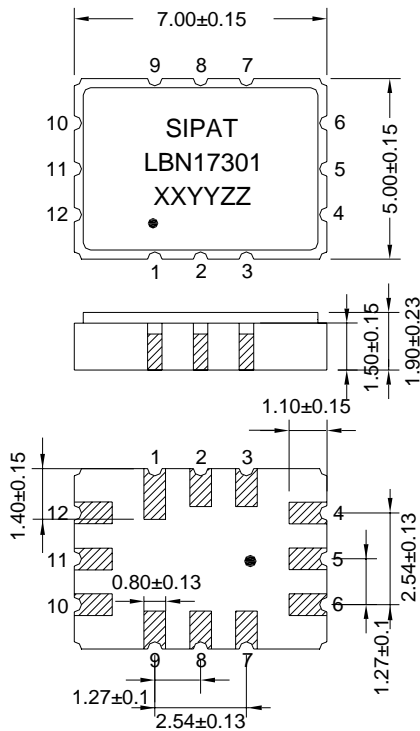
Matching Configuration



L1=L2=68nH L3=L4=56nH
C1=6.8pF C2=3.9pF C3=10pF
Source Impedance=200 ohm
Load Impedance=150 ohm

Notes - Component values may change depending
on board layout.

Package Dimension



Pad Configuration:

Input: 10,12
Output: 4,6
Ground: All Others

Marking Configuration:

- 1) •: Pad Number 1 Index
- 2) SIPAT: Manufacturer Name
- 3) LBN17301: Part Number
- 4) XXYY: Date(Year/month)
- 5) ZZ: Identified Code

Package: SMD7.0*5.0

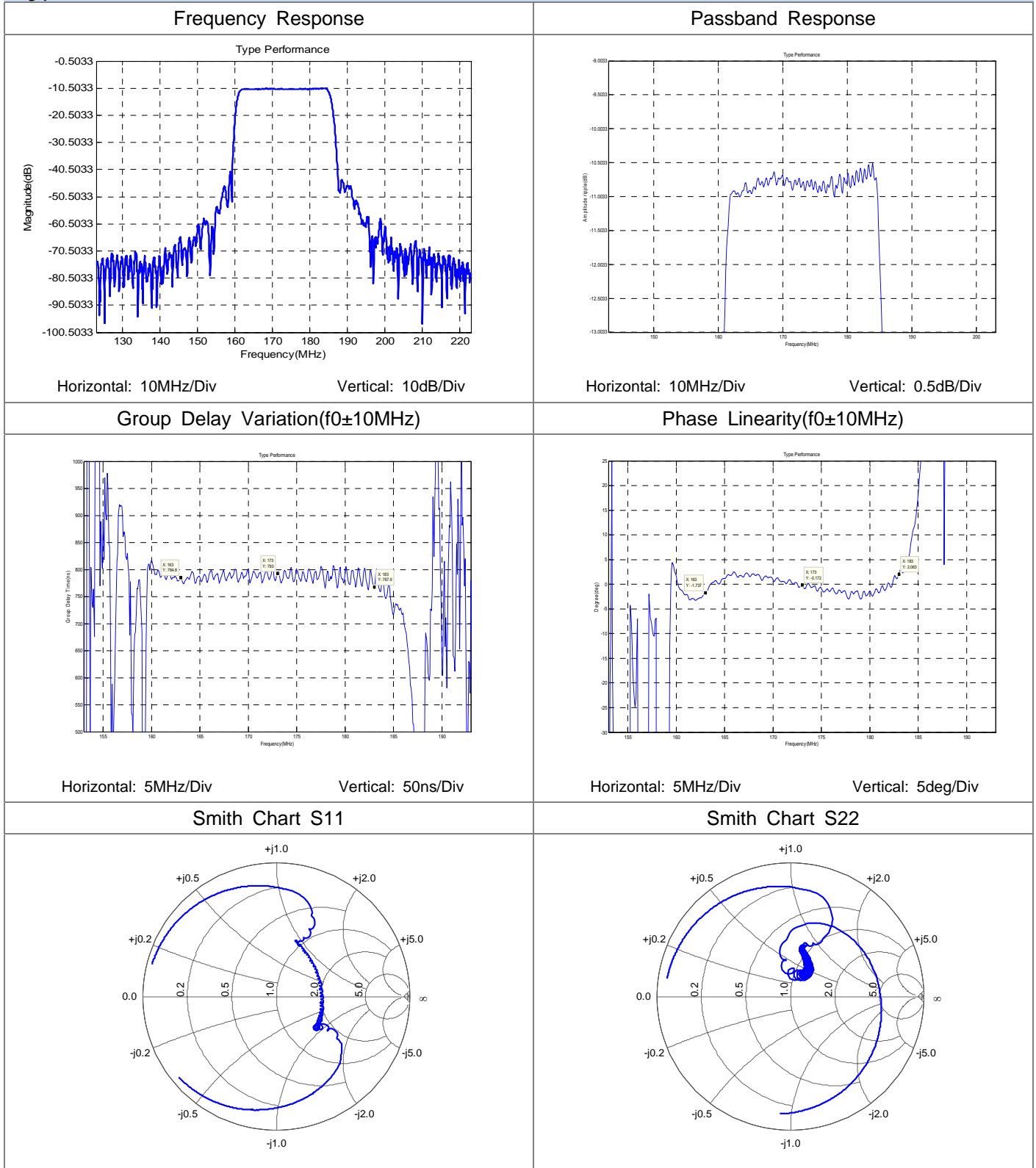
Unit: mm



SIPAT Co., Ltd.
(CETC No.26 Research Institute)
#14 Nanping Huayuan Road,
Chongqing, China, 400060

Part Number	LBN17301	
Rev. Date	2010-09-02	
Ver.	1.0	Page 2/3

Typical Performance



SIPAT Co., Ltd.
(CETC No.26 Research Institute)
#14 Nanping Huayuan Road,
Chongqing, China, 400060

Part Number	LBN17301	
Rev. Date	2010-09-02	
Ver.	1.0	Page 3/3