



MDQ100

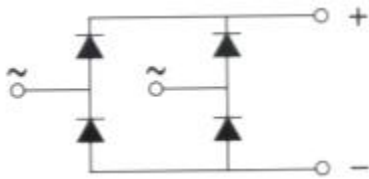


Single Phase Rectifier Bridge

VRRM 800 to 1800V
ID 100Amp

Applications

- Single phase rectifiers for power supplies
- Rectifiers for DC motor field supplies
- Battery charger rectifiers
- Input rectifiers for variable frequency drives



Featu

- Single phase bridge rectifier
- Blocking voltage:800 to 1800V

Module Type

TYPE	VRRM	VRSM
MDQ100-08	800V	900V
MDQ100-12	1200V	1300V
MDQ100-16	1600V	1700V
MDQ100-18	1800V	1900V

Maximum Ratings

Symbol	Conditions	Values	Units
ID	Tc=85°C	100	A
IFSM	Tvj=45°C t=10ms (50HZ), sine	920	A
i ² t	Tvj=45°C t=10ms (50HZ), sine	4200	A ² S
Viso	a.c.50HZ;r.m.s.;1min	2500	V
Tvj		-40 to 150	°C
Tstg		-40 to 125	°C
Weight	Module (Approximately)	200	g

Thermal Characteristics

Symbol	Conditions	Values	Units
Rth(j-c)	Per module	0.30	°C/W

Electrical Characteristics

Symbol	Conditions	Values	Units
VFM	T=25°C IFM=300A	1.90	V
IRD	Tvj=25°C VRD=VRRM	≤0.5	mA
	Tvj=150°C VRD=VRRM	≤5	mA



MDQ100

Performance Curves

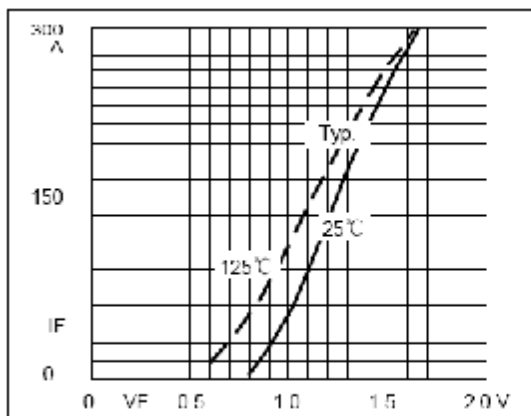


Fig1. Forward Characteristics

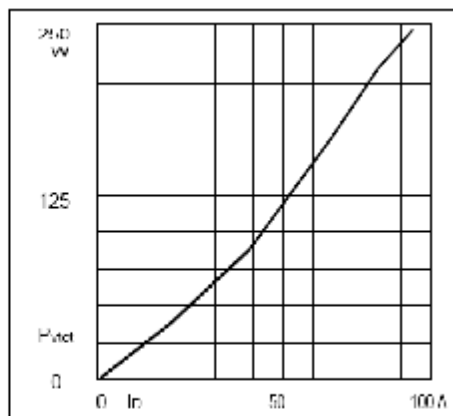
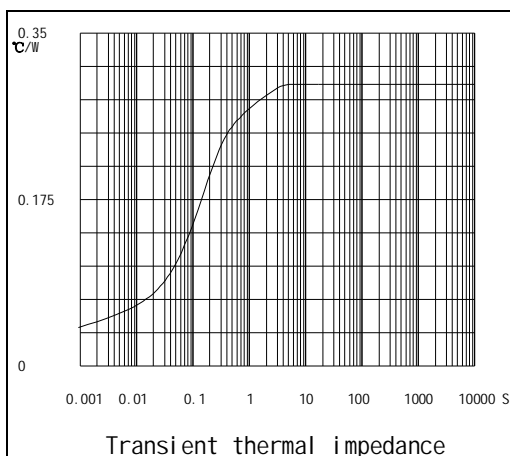
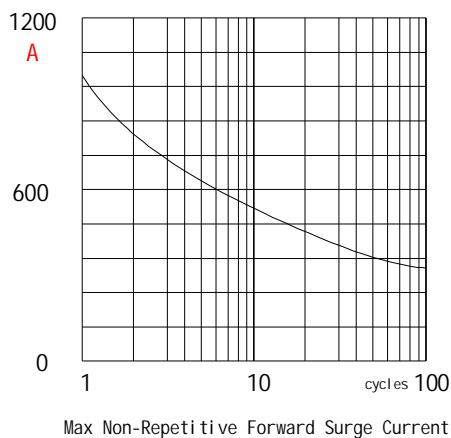


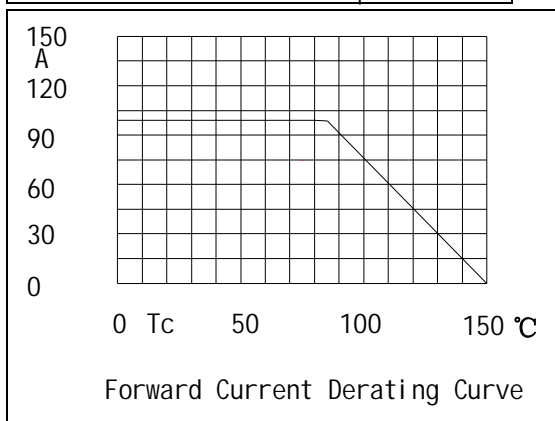
Fig2. Power dissipation



Transient thermal impedance



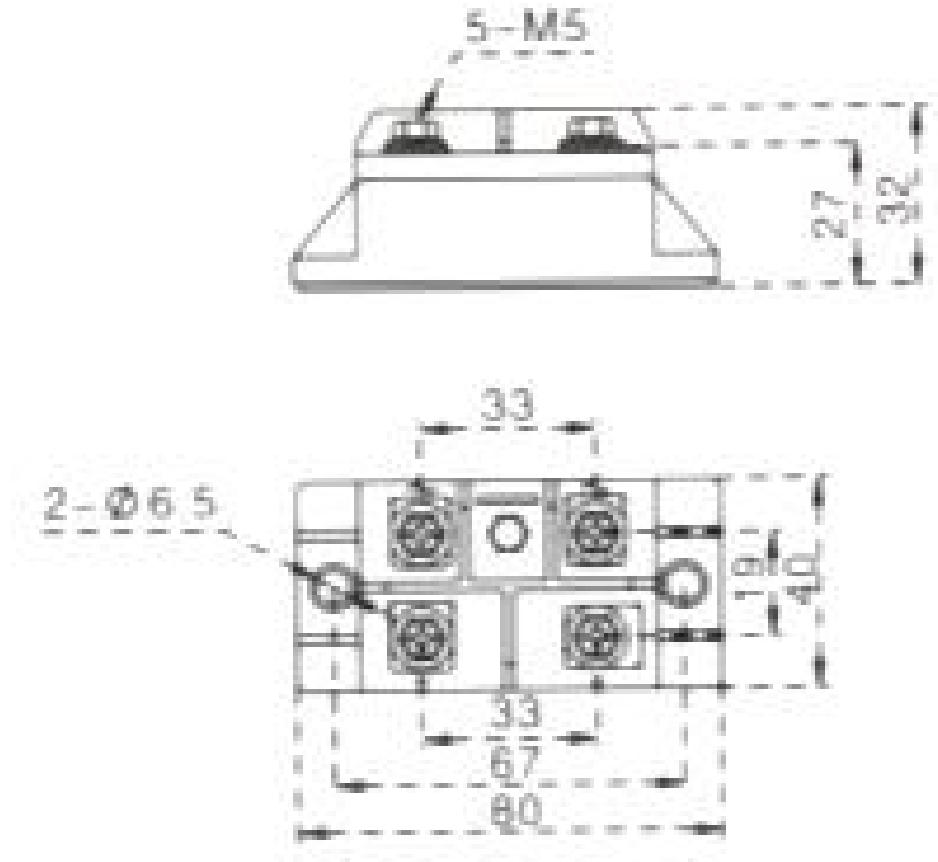
Max Non-Repetitive Forward Surge Current



Forward Current Derating Curve



MDQ100



Dimensions in mm