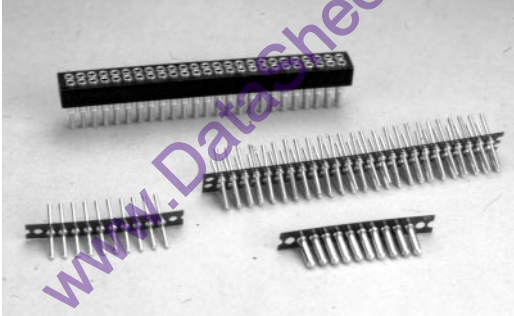


.050" (1.27mm) Pitch Board to Board Interconnections



Features:

- Sockets and adapters are designed in mating pairs.
- .050" (1.27mm) and .100" (2.54mm) centers spacing row to row.
- High reliability screw machine terminals with closed end construction for 100% anti-wicking of solder.
- For surface mount board to board options consult factory.

Terminals and Contacts:

Terminal: Brass - Copper Alloy (C36000), ASTM-B-16

Contact: Beryllium Copper - Copper Alloy (C17200), ASTM-B-194

Plating:

Terminal: Gold over Nickel or Tin-Lead over Nickel

Contact: Gold over Nickel or Tin-Lead over Nickel

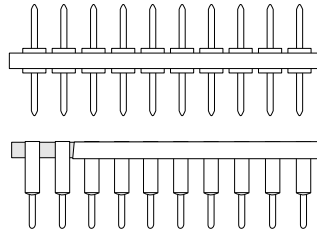
Body Material:

Molded - Glass Filled Thermoplastic Polyester (P.B.T.), U.L. Rated 94V-O, -60°C to 140°C (-76°F to 284°F)

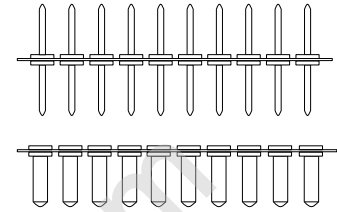
High Temp. Molded - High temp. glass filled thermoplastic, U.L. Rated 94V-O, -60°C to 260°C (-76°F to 500°F)

Peel-A-Way® - Polyimide Film, Temp. range -269°C to 400°C (-452°F to 752°F)

Molded Adapter & Socket

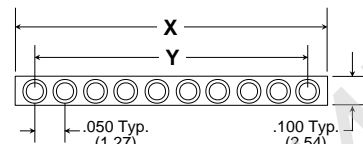


Peel-A-Way® Adapter & Socket



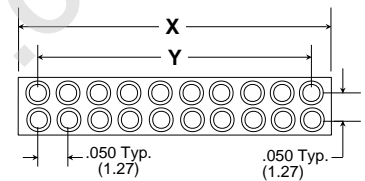
Single Row

SDA, NBA, KBA - Male / SDS, KBS - Female



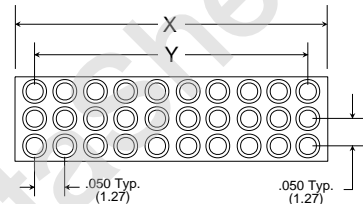
Dual Row .050" (1.27mm) Spacing Row to Row

KNA, DDA - Male / DDS, KNS - Female



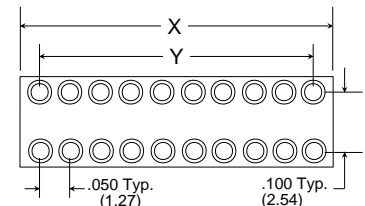
Triple Row

KTA - Male / KTS - Female
P/N Ex. KTS030-227TG



Dual Row

.100" (2.54mm) Spacing Row to Row
DAD, KDA - Male / DD, KDD - Female
P/N Ex. KDA020-131T



Molded

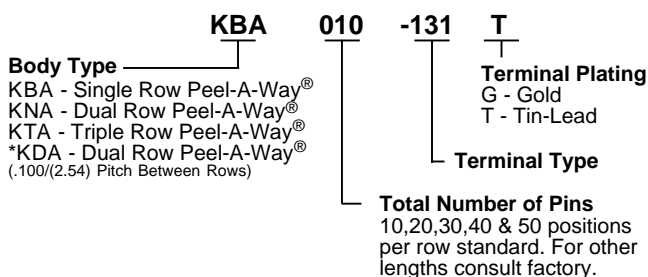
# of Pins Per Row	X	Y
10	.550 (13.97)	.450 (11.43)
20	1.050 (26.67)	.950 (24.13)
30	1.550 (39.37)	1.450 (36.83)
40	2.050 (52.07)	1.950 (49.53)
50	2.550 (64.77)	2.450 (62.23)

Peel-A-Way®

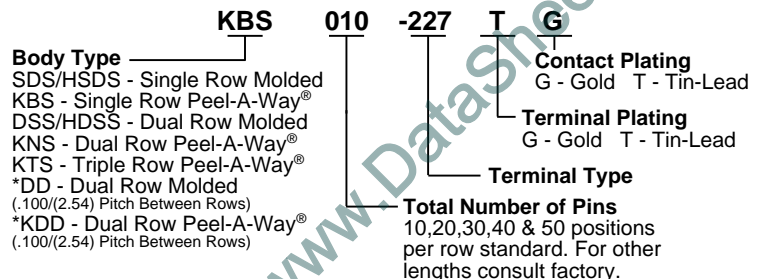
# of Pins Per Row	X	Y
10	.650 (16.51)	.450 (11.43)
20	1.150 (29.21)	.950 (24.13)
30	1.650 (41.91)	1.450 (36.83)
40	2.150 (54.61)	1.950 (49.53)
50	2.650 (67.31)	2.450 (62.23)

Multiply number of rows times number of pins per row for total pin count to order.

How To Order - Male



How To Order - Female

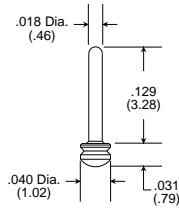


Peel-A-Way® covered by patent rights issued and/or pending.

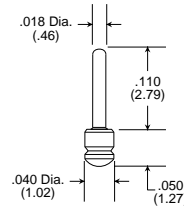
.050" (1.27mm) Pitch Board to Board Interconnections


Male Terminal Information

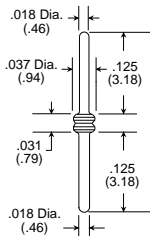
**Surface Mount
Type -525**
Peel-A-Way® Only




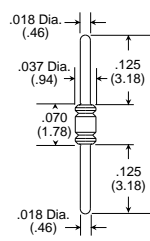
**Surface Mount
Type -526**
Peel-A-Way® Only



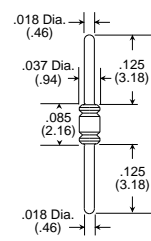
 **Thru Hole
Type -131**
Peel-A-Way® Only



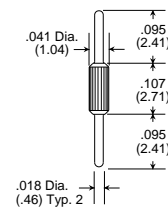
 **Thru Hole
Type -321**
Peel-A-Way® Only



 **Thru Hole
Type -322**
Peel-A-Way® Only

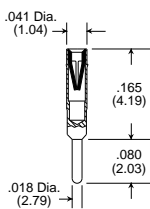


**Thru Hole
Type -233**
Molded Only

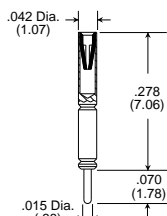


Female Terminal Information

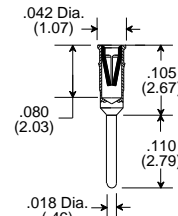
 **Thru Hole
Type -168**
Molded Only



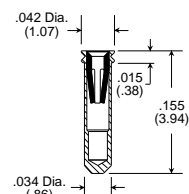
**Thru Hole
Type -205**
Molded Only



 **Thru Hole
Type -347**
Molded Only



**Thru Hole
Type -227**
Peel-A-Way® Only



 Quick turn delivery available on standard terminal types.

Additional terminal types available. See terminal section for detailed terminal information.

Peel-A-Way® covered by patent rights issued and/or pending.

.050" (1.27mm) Pitch Board to Board Interconnections

Thru Hole Male & Female

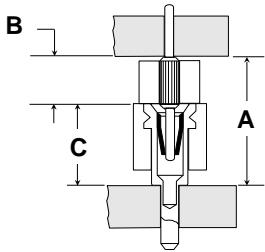


Figure 1
Molded Male & Female

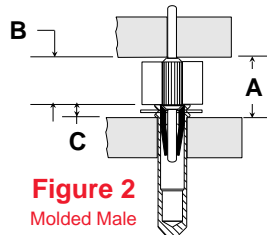


Figure 2
Molded Male
&
Peel-A-Way® Female

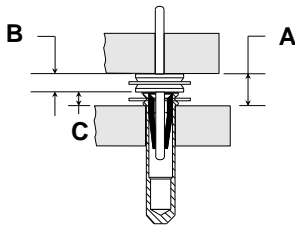


Figure 3
Peel-A-Way® Male & Female

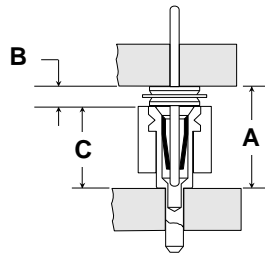


Figure 4
Peel-A-Way® Male & Molded Female

Thru Hole Male & Surface Mount Female

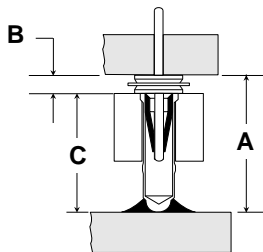


Figure 5
Peel-A-Way® Male & Molded Female

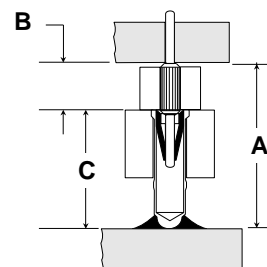


Figure 6
Molded Male & Female

Order One Each Male & Female To Get the Required "A" Dim.

B	C	A	Male Part #	Female Part #	Fig. #
.031 (.79)	.015 (.38)	.046 (1.17)	KBA020-131G	KBS020-227TG	3
.070 (1.78)	.015 (.38)	.085 (2.16)	KBA020-321G	KBS020-227TG	3
.085 (2.16)	.015 (.38)	.100 (2.54)	KBA020-322G	KBS020-227TG	3
.107 (2.71)	.015 (.38)	.122 (3.09)	NBA020-233G	KBS020-227TG	2
.031 (.79)	.112 (2.84)	.143 (3.63)	KBA020-131G	SDS020-557TG	4
.031 (.79)	.118 (3.00)	.149 (3.79)	KBA020-131G	SDS020-551TG	5
.070 (1.78)	.112 (2.84)	.182 (4.62)	KBA020-321G	SDS020-557TG	4
.070 (1.78)	.118 (3.00)	.188 (4.78)	KBA020-321G	SDS020-551TG	5
.031 (.79)	.161 (4.09)	.192 (4.88)	KBA020-131G	SDS020-553TG	5
.031 (.79)	.165 (4.19)	.196 (4.98)	KBA020-131G	SDS020-168TG	4
.085 (2.16)	.112 (2.84)	.197 (5.00)	KBA020-322G	SDS020-557TG	4
.085 (2.16)	.118 (3.00)	.203 (5.16)	KBA020-322G	SDS020-551TG	5
.107 (2.71)	.112 (2.84)	.219 (5.55)	SDA020-233G	SDS020-557TG	1
.107 (2.71)	.118 (3.00)	.225 (5.71)	NBA020-233G	SDS020-551TG	6
.070 (1.78)	.161 (4.09)	.231 (5.87)	KBA020-321G	SDS020-553TG	5
.070 (1.78)	.165 (4.19)	.235 (5.97)	KBA020-321G	SDS020-168TG	4
.085 (2.16)	.165 (4.19)	.250 (6.35)	KBA020-322G	SDS020-168TG	4
.085 (2.16)	.161 (4.09)	.246 (6.25)	KBA020-322G	SDS020-553TG	5
.071 (2.71)	.165 (4.19)	.272 (6.91)	NBA020-233G	SDS020-168TG	1
.031 (.79)	.278 (7.06)	.309 (7.85)	KBA020-131G	SDS020-205TG	4
.070 (1.78)	.278 (7.06)	.348 (8.84)	KBA020-321G	SDS020-205TG	4
.085 (2.16)	.278 (7.06)	.363 (9.22)	KBA020-322G	SDS020-205TG	4
.107 (2.71)	.278 (7.06)	.385 (9.77)	NBA020-233G	SDS020-205TG	1

20 Position Single Row Part Numbers Shown
For Additional Ordering Information See Page 114

If required "A" dimension is not shown, consult factory.

Peel-A-Way® covered by patent rights issued and/or pending.

.050" (1.27mm) Pitch Board to Board Interconnections

Surface Mount Male & Thru Hole Female

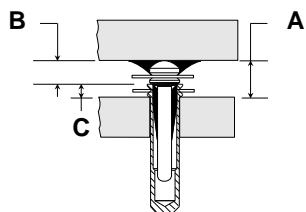


Figure 7
Peel-A-Way® Male & Female

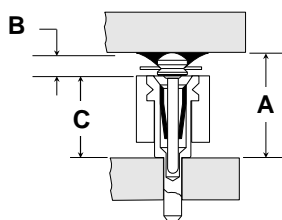


Figure 8
Peel-A-Way® Male & Molded Female

Surface Mount Male & Female

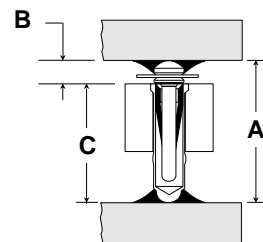


Figure 9
Peel-A-Way® Male & Molded Female

Order One Each Male & Female To Get the Required "A" Dim.

B	C	A	Male Part #	Female Part #	Fig. #
.031 (.79)	.015 (.38)	.046 (1.17)	KBA020-525G	KBS020-227TG	7
.050 (1.27)	.015 (.38)	.065 (1.65)	KBA020-526G	KBS020-227TG	7
.050 (1.27)	.118 (3.00)	.168 (4.27)	KBA020-526G	SDS020-551TG	9
.031 (.79)	.161 (4.09)	.192 (4.88)	KBA020-525G	SDS020-553TG	9
.031 (.79)	.165 (4.19)	.196 (4.98)	KBA020-525G	SDS020-168TG	8
.050 (1.27)	.161 (4.09)	.211 (5.36)	KBA020-526G	SDS020-553TG	9
.050 (1.27)	.165 (4.19)	.215 (5.46)	KBA020-526G	SDS020-168TG	8
.031 (.79)	.278 (7.06)	.309 (7.85)	KBA020-525G	SDS020-205TG	8
.050 (1.27)	.278 (7.06)	.326 (8.33)	KBA020-526G	SDS020-205TG	8

20 Position Single Row Part Numbers Shown
For Additional Ordering Information See Page 114

If required "A" dimension is not shown, consult factory.

Peel-A-Way® covered by patent rights issued and/or pending.