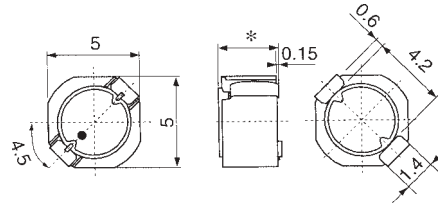


TYPE D52LC

Frequency Range: 0.1 - 1MHz
 Inductance Range: 1.2 - 100 μ H



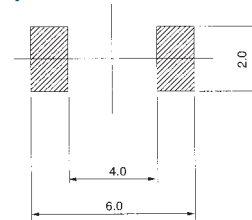
* : D52LC: 2.0max. / D53LC: 3.0max.

Unit: mm

Features

- Low profile (2.0mm max.)
- Magnetically shielded
- Available on tape and reel for auto-insertion
- Suitable for reflow soldering
- Lead-free terminations

Recommended patterns:



Unit: mm

STANDARD PARTS SELECTION GUIDE

- (1) Inductance is measured by LCR-meter 4284A (HP) or equivalent.
- (2) DC Resistance is measured by Digital Multimeter TR6871 (Advantest) or equivalent.
- (3) Maximum allowable DC current is that which causes a 30% inductance reduction from the initial value, or coil temperature to rise by 40°C, whichever is smaller. (Reference ambient temperature 20°C).

TYPE D52LC

TOKO Part Number	Lo (μ H)	Inductance		DC Resistance Spec (m Ω) max.	Rated DC Current ⁽³⁾	
		Tolerance %	Test Freq. (kHz)		Δ L/L=30% (A) max.	Δ T=40°C (A) max.
#A914BYW-1R2M=P3	1.2	\pm 20	100	44	2.15	2.29
#A914BYW-2R2M=P3	2.2	\pm 20	100	59	1.63	1.64
#A914BYW-3R5M=P3	3.5	\pm 20	100	73	1.34	1.45
#A914BYW-4R7M=P3	4.7	\pm 20	100	87	1.14	1.22
#A914BYW-6R8M=P3	6.8	\pm 20	100	105	0.95	1.10
#A914BYW-100M=P3	10	\pm 20	100	150	0.76	0.87
#A914BYW-150M=P3	15	\pm 20	100	210	0.63	0.72
#A914BYW-220M=P3	22	\pm 20	100	275	0.56	0.66
#A914BYW-330M=P3	33	\pm 20	100	455	0.44	0.48
#A914BYW-470M=P3	47	\pm 20	100	730	0.36	0.35
#A914BYW-680M=P3	68	\pm 20	100	935	0.30	0.33
#A914BY-101M=P3	100	\pm 20	100	1500	0.23	0.24

Note: =P3 is added to each part number to indicate tape and reel packaging.