

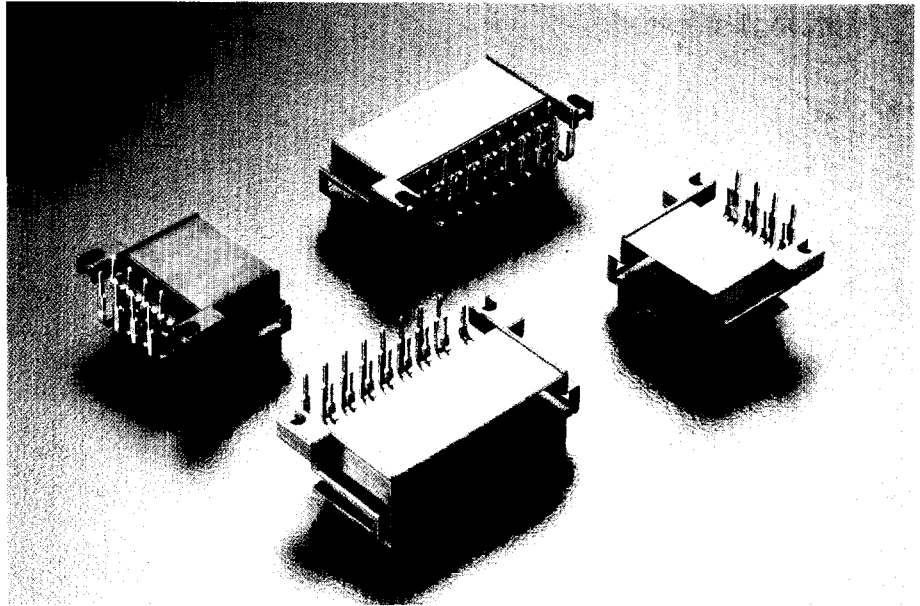
# PCB to wire connectors

## 2.8 mm terminals

### 2.8 x 0.8 mm right angle pin headers

#### Features

- 8-16 positions available
- Double row 5 x 5 mm staggered pitch
- Moulded-in connector
- Post-tinned tab contact
- Mechanical polarization
- Several colour codings available



Part Numbers	No. of Position	Terminal size	Colour
VT92BR08RD*T	8	2.8 x 0.8 mm	Red
VT92BR08WH*T	8	2.8 x 0.8 mm	White
VT92BR08YE*T	8	2.8 x 0.8 mm	Yellow
VT92BR08GY*T	8	2.8 x 0.8 mm	Grey
VT92BR16BK*T	16	2.8 x 0.8 mm	Black
VT92BR16GY*T	16	2.8 x 0.8 mm	Grey
VT92BR16GN*T	16	2.8 x 0.8 mm	Green
VT92BR16BL*T	16	2.8 x 0.8 mm	Blue
VT92BR16BN*T	16	2.8 x 0.8 mm	Brown

#### Performance characteristics

- Temperature range :  
from -40°C to +105°C
- Housing locking strength : > 40 N  
per way

#### Construction

- Housing material : Polyamide
- Tab material and plating : CuZn/Sn

#### Connector compatibility

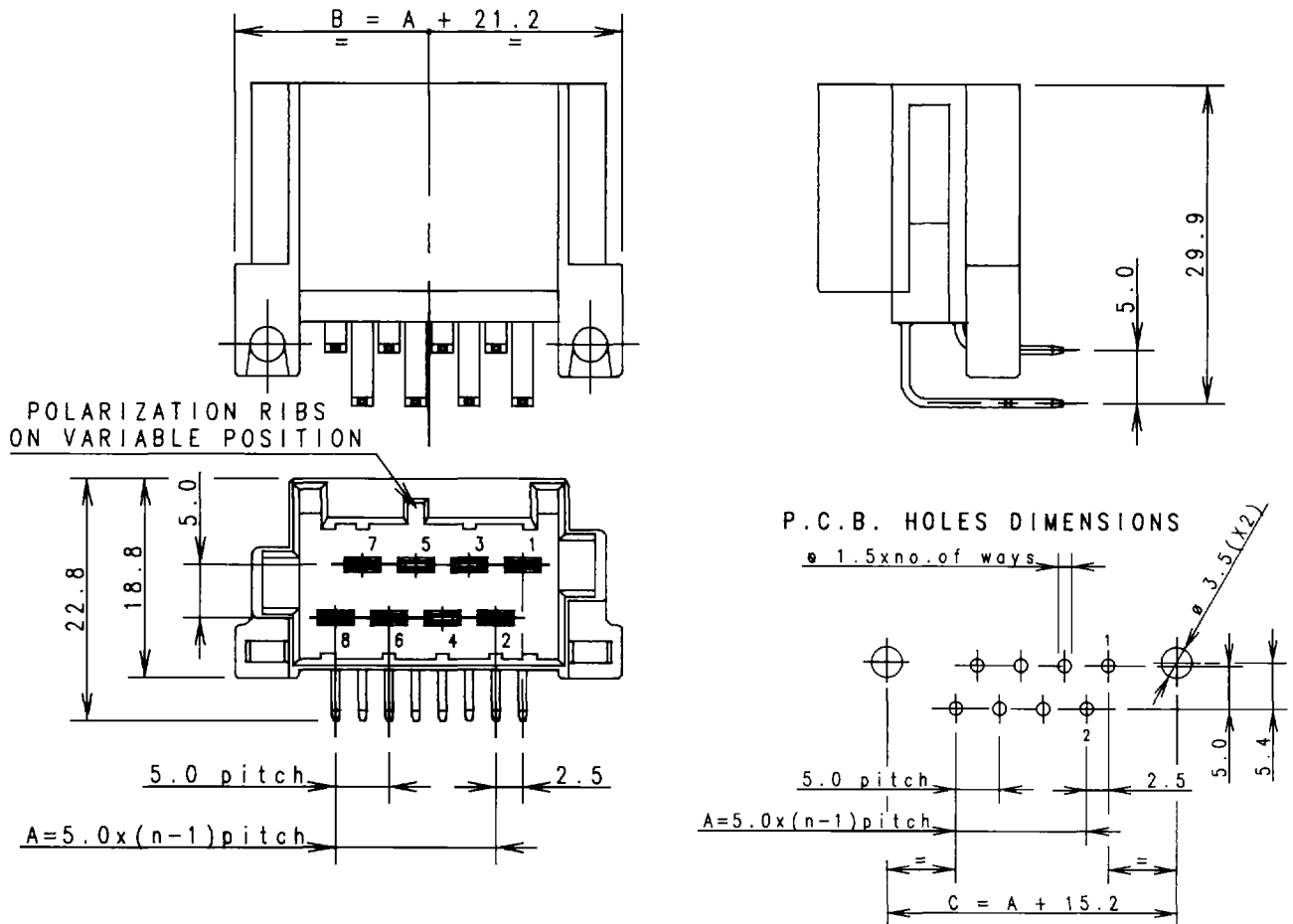
- Matable with :  
VT92 female connectors

# PCB to wire connectors

## 2.8 mm terminals

### Dimensional characteristics

#### Right angle pin header



#### Codings

