

Series 800
"Mighty
Mouse"

Glenair®

**Series 800 "Mighty Mouse" Connector
800-014 Cordsets
Overmolded - Environmental**



**800-014
Cordsets
Overmolded - Environmental**

PRODUCT FACTS

- Rugged Neoprene Jacketing
- 360° Shielding
- Straight & Right Angle Configurations
- Waterproof
- High Temperature
- Flexible Overmolded Construction

RELATED INFORMATION

Materials and Finishes	4-5
Performance Specifications	6-9
Contact Arrangements	10
Application Tooling	A-1
Hardware and Accessories	F-1

HOW TO ORDER

Connector Series	Connector Style End A	Connector Style End B	Class	Shell Size-Insert Arrangement	Key Position	Cable Type	Wire Gauge	Cable Exit	Overall Length
800-014	A - Plug, Hex Coupling Nut, Pin Contacts	A - Plug, Hex Coupling Nut, Pin Contacts	M - Aluminum Shell, Electroless Nickel Finish	6-4	N	N - Neoprene Jacket, M22759/11-*9	2 - #22 AWG	A - Straight Cable Exit End A and B	Overall Length in Inches (min.)
			NF - Aluminum Shell, Olive Drab Cadmium Over Electroless Nickel Finish	6-7	Normal				
	B - Plug, Hex Coupling Nut, Socket Contacts	B - Plug, Hex Coupling Nut, Socket Contacts	C - Aluminum Shell, Black Anodize Finish	9-19	X	Primaries, Polyurethane Overmolded, No Shield	4 - #24 AWG	B - Right Angle Exit End A and B	
			ZN - Aluminum Shell, Zinc-Nickel Finish	12-37	Position X				
	C - Receptacle, In-Line, Pin Contacts	C - Receptacle, In-Line, Pin Contacts	Z1 - Stainless Steel Shell, Passivated	14-55	Y	S - Neoprene Jacket, M22759/11-*9	6 - #26 AWG	C - Straight Cable Exit End A, Right Angle Exit End B	
				15-85	Position Y				
	D - Receptacle, In-Line, Socket Contacts	D - Receptacle, In-Line, Socket Contacts			Z	Primaries, Polyurethane Overmolded, Shielded	8 - #28 AWG	D - Right Angle Exit End A, and End B	
			N - No Connector Installed on End B		Position Z				

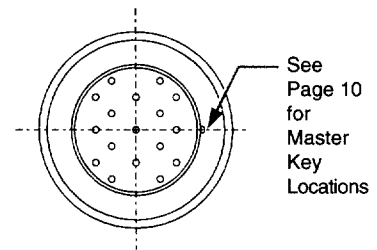
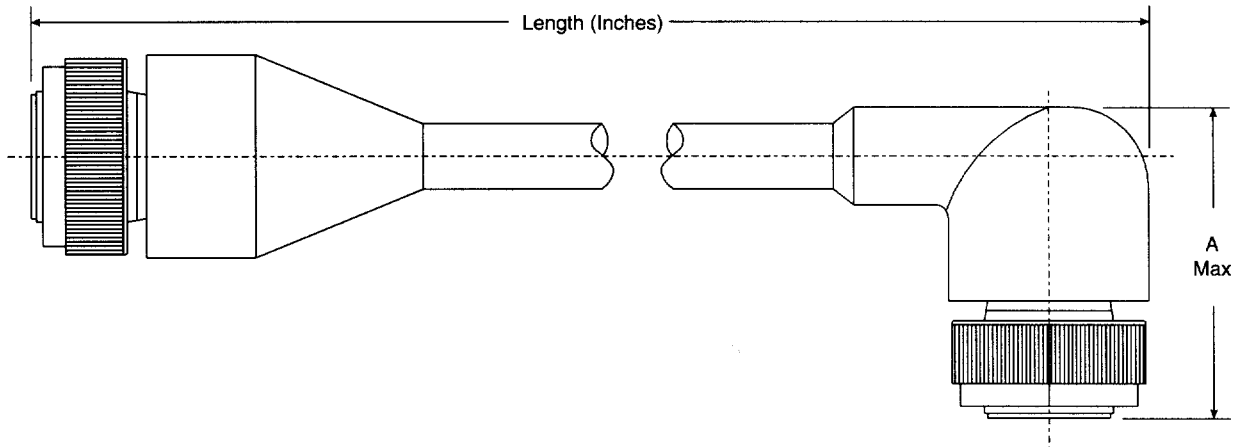
Sample Part Number:

800-014 — A A M 6-7 N N 4 A — 72

**Series 800 "Mighty Mouse" Connector
800-014 Cordsets
Overmolded - Environmental**

Glenair®

**Series 800
"Mighty
Mouse"**



DIMENSIONS	
Shell Size/ Insert Arrangements	A MAX
6-4, 6-7	1.200 (30.5)
9-19	1.400 (35.6)
12-37	1.500 (38.1)
14-55	1.650 (41.5)
15-85	1.750 (44.5)

Metric Dimensions (mm) are in parentheses.