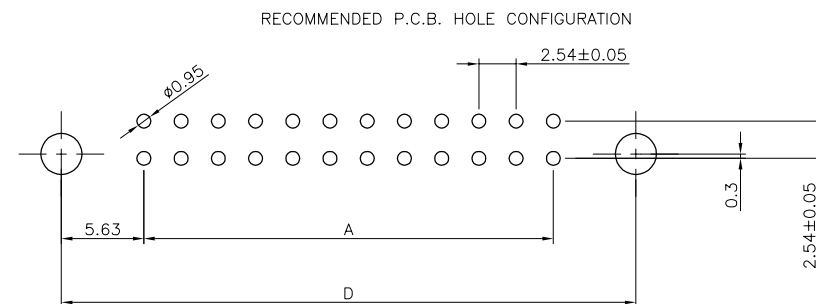
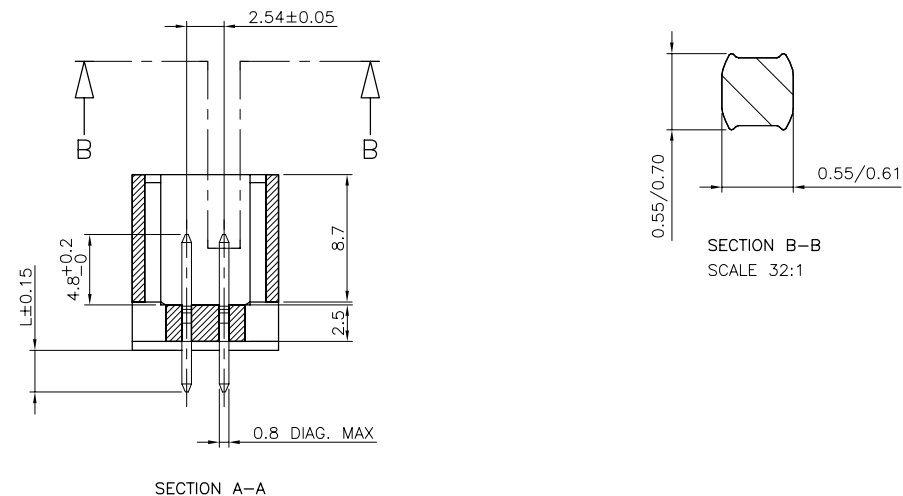
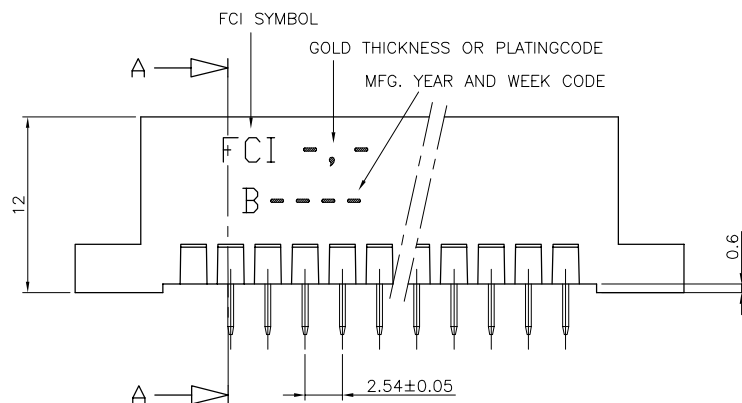
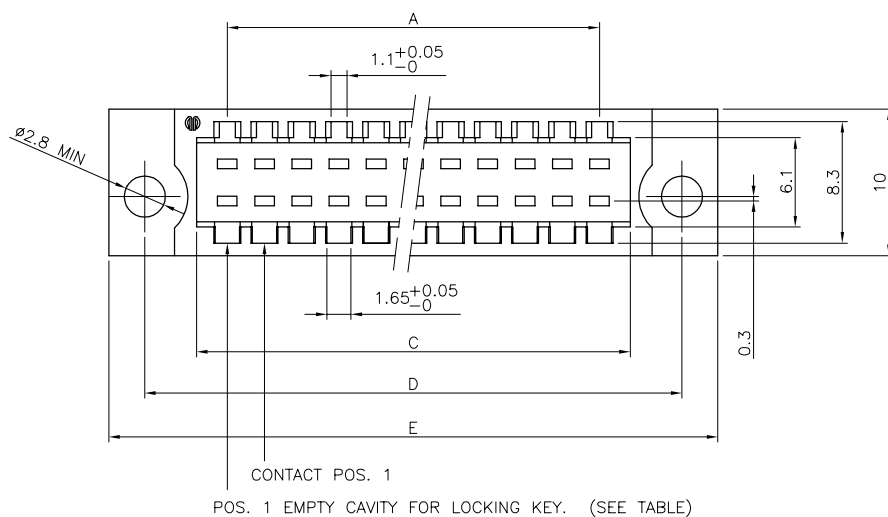


PLATING CODE		
PRODUCT NUMBER	CONTACT AREA	SOLDER TERMINATION
BPH4B-----Z6	1.2 μ m Au	3-5 μ m SnPb
BPH4B-----Z5	1 μ m Au	3-5 μ m SnPb
BPH4B-----Z4	0.8 μ m Au	3-5 μ m SnPb



PERFORMANCE CHARACTERISTICS:


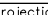
VOLTAGE RATING 250 VAC.
CURRENT RATING 1 A AT 25°C.
INSULATION RESISTANCE 10^3 M Ω MIN. AFTER TEST.
DIELECTRIC WITHSTANDING VOLTAGE 1000 V.
CONTACT RESISTANCE 15 m Ω MAX.
OPERATING T° -55°C TO +125°C.
CONTACT RETENTION FORCE 20 N MIN.

MATERIALS:

HOUSING GLASS REINFORCED THERMOPLASTIC UL94-V0.
CONTACTS COPPER ALLOY.
PLATING Au OVER NI IN CONTACT AREA;
TIN ALLOY ON SOLDER TERMINAL.

NOTES:

1: LAST POSITION (POS. 34) HAS A REVERSED POLARITY

mat'l. code				tolerances unless otherwise specified		CUSTOMER COPY		 ELECTRONICS www.fciconnect.com	
ltr	ecn no	dr	date	linear	0.1 ±0.2	 project mm	title HEADER BPH4 2-ROW WITH MOUNTING EARS	product family BPH4 sizedwg no A2	code 213 sheet 1 of 1
A	F00822	GCO	00.10.18		0.01 ±0.1				
				angles	±°				
				dr	G CORBOZ	00.10.18			
				eng	JF NOTTEAU	00.10.18			
				chr			scale		
				app	JF-N	00.10.18	4:1	54708	
sheet	revision	A							
index	sheet	1							