

Fast soft-recovery controlled avalanche rectifiers

BYW96 series

FEATURES

- Glass passivated
- High maximum operating temperature
- Low leakage current
- Excellent stability
- Guaranteed avalanche energy absorption capability
- Available in ammo-pack
- Also available with preformed leads for easy insertion.

DESCRIPTION

Rugged glass SOD64 package, using a high temperature alloyed

construction. This package is hermetically sealed and fatigue free as coefficients of expansion of all used parts are matched.

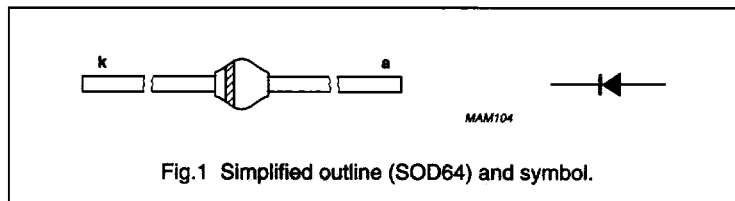


Fig.1 Simplified outline (SOD64) and symbol.

LIMITING VALUES

In accordance with the Absolute Maximum Rating System (IEC 134).

SYMBOL	PARAMETER	CONDITIONS	MIN.	MAX.	UNIT
V _{RRM}	repetitive peak reverse voltage				
	BYW96D		–	800	V
	BYW96E		–	1000	V
V _R	continuous reverse voltage				
	BYW96D		–	800	V
	BYW96E		–	1000	V
I _{F(AV)}	average forward current	T _{tp} = 50 °C; lead length = 10 mm see Fig.2; averaged over any 20 ms period; see also Fig.6	–	3	A
I _{F(AV)}	average forward current	T _{amb} = 55 °C; PCB mounting (see Fig.11); see Fig.3; averaged over any 20 ms period; see also Fig.6	–	1.25	A
I _{FRM}	repetitive peak forward current	T _{tp} = 50 °C; see Fig.4	–	30	A
		T _{amb} = 55 °C; see Fig.5	–	13	A
I _{FSM}	non-repetitive peak forward current	t = 10 ms half sine wave; T _j = T _{jmax} prior to surge; V _R = V _{RRMmax}	–	70	A
E _{RSM}	non-repetitive peak reverse avalanche energy	L = 120 mH; T _j = T _{jmax} prior to surge; inductive load switched off	–	10	mJ
T _{stg}	storage temperature		–65	+175	°C
T _j	junction temperature	see Fig.7	–65	+175	°C

Fast soft-recovery controlled avalanche rectifiers

BYW96 series

ELECTRICAL CHARACTERISTICS

$T_j = 25\text{ }^\circ\text{C}$ unless otherwise specified.

SYMBOL	PARAMETER	CONDITIONS	MIN.	TYP.	MAX.	UNIT
V_F	forward voltage	$I_F = 5\text{ A}$; $T_j = T_{j,max}$; see Fig.8	–	–	1.25	V
		$I_F = 5\text{ A}$; see Fig.8	–	–	1.50	V
$V_{(BR)R}$	reverse avalanche breakdown voltage BYW96D BYW96E	$I_R = 0.1\text{ mA}$	900	–	–	V
			1100	–	–	V
I_R	reverse current	$V_R = V_{RRMmax}$; see Fig.9	–	–	1	μA
		$V_R = V_{RRMmax}$; $T_j = 165\text{ }^\circ\text{C}$; see Fig.9	–	–	150	μA
t_{rr}	reverse recovery time	when switched from $I_F = 0.5\text{ A}$ to $I_R = 1\text{ A}$; measured at $I_R = 0.25\text{ A}$; see Fig.12	–	–	300	ns
C_d	diode capacitance	$f = 1\text{ MHz}$; $V_R = 0\text{ V}$; see Fig.10	–	75	–	pF
$\left \frac{dI_R}{dt} \right $	maximum slope of reverse recovery current	when switched from $I_F = 1\text{ A}$ to $V_R \geq 30\text{ V}$ and $dI_F/dt = -1\text{ A}/\mu\text{s}$; see Fig.13	–	–	6	$\text{A}/\mu\text{s}$

THERMAL CHARACTERISTICS

SYMBOL	PARAMETER	CONDITIONS	VALUE	UNIT
$R_{th\ j-tp}$	thermal resistance from junction to tie-point	lead length = 10 mm	25	K/W
$R_{th\ j-a}$	thermal resistance from junction to ambient	note 1	75	K/W

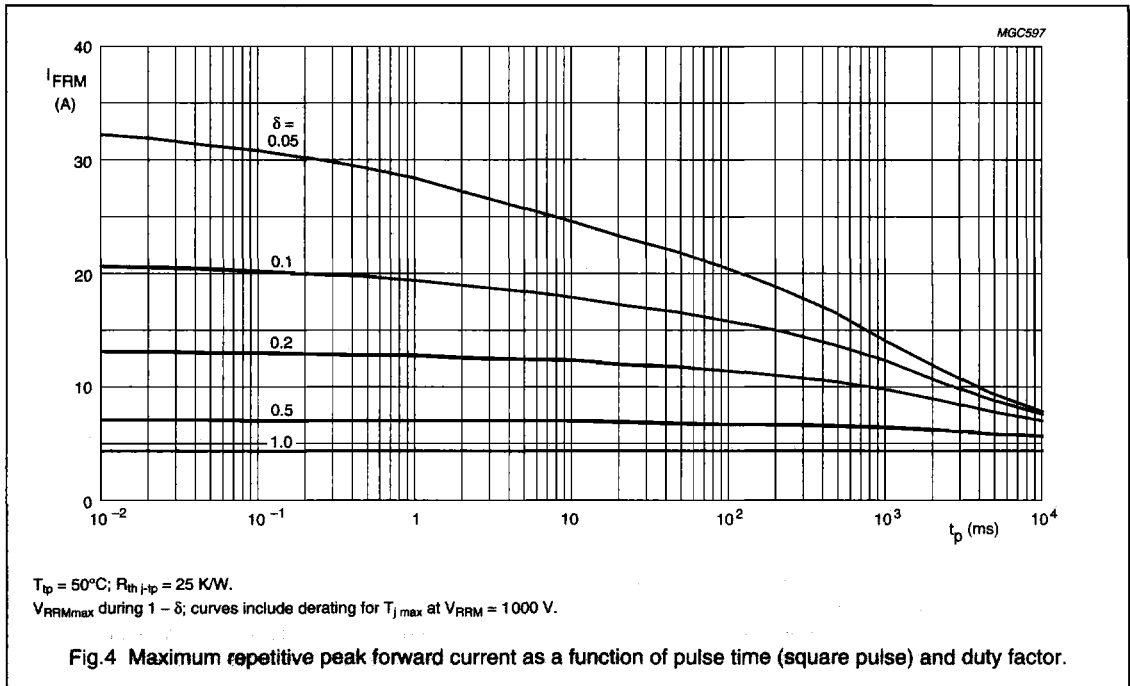
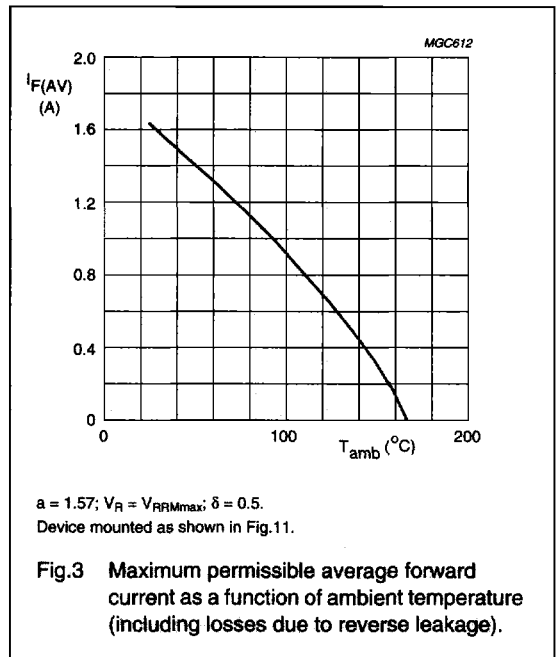
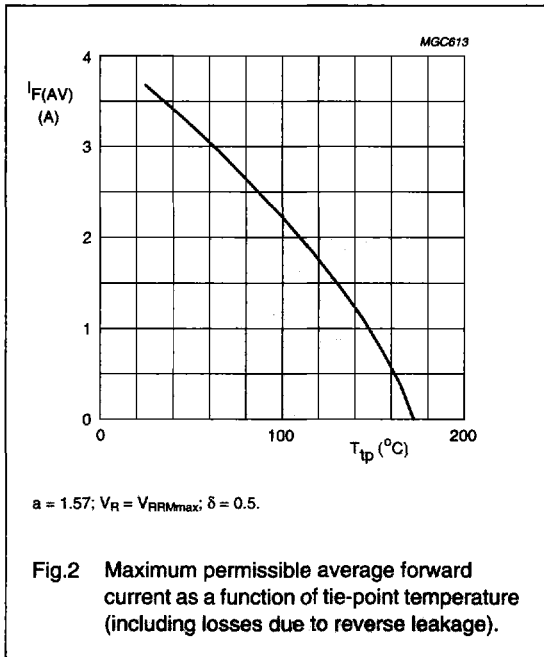
Note

1. Device mounted on an epoxy-glass printed-circuit board, 1.5 mm thick; thickness of Cu-layer $\geq 40\text{ }\mu\text{m}$, see Fig.11. For more information please refer to the 'General Part of Handbook SC01'.

Fast soft-recovery
controlled avalanche rectifiers

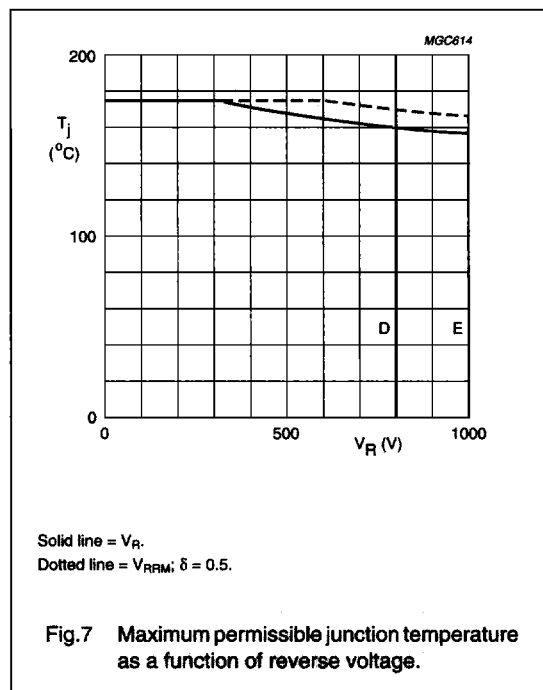
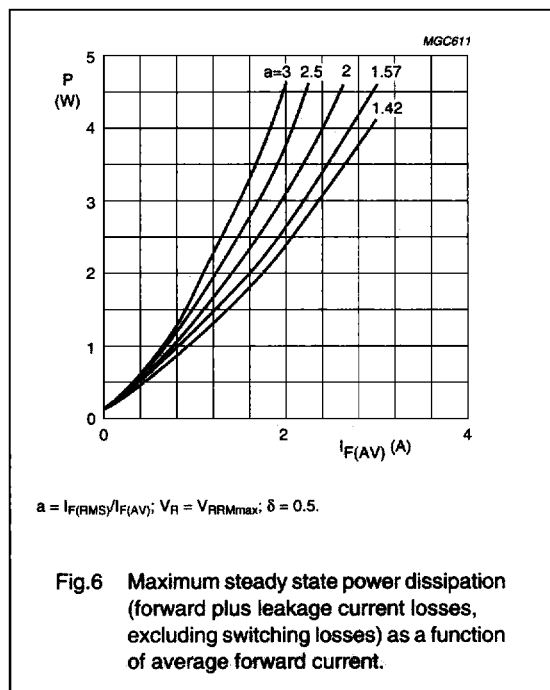
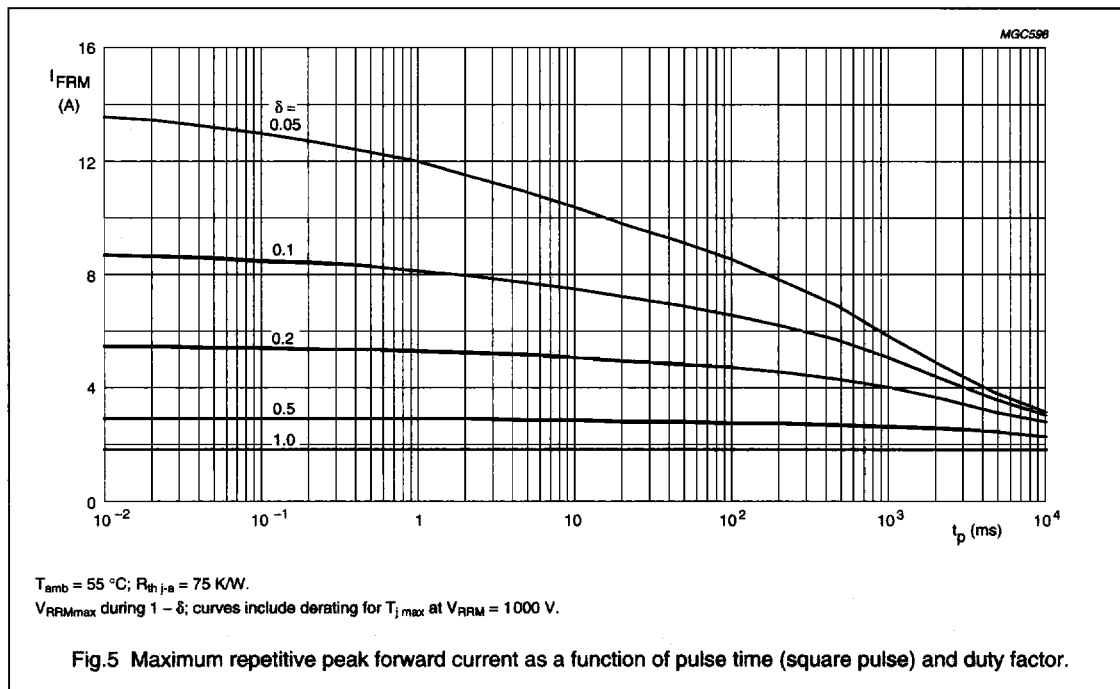
BYW96 series

GRAPHICAL DATA



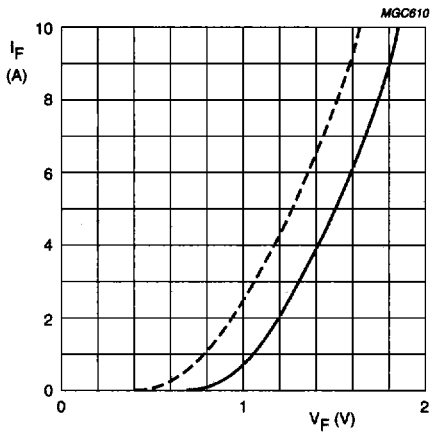
Fast soft-recovery controlled avalanche rectifiers

BYW96 series



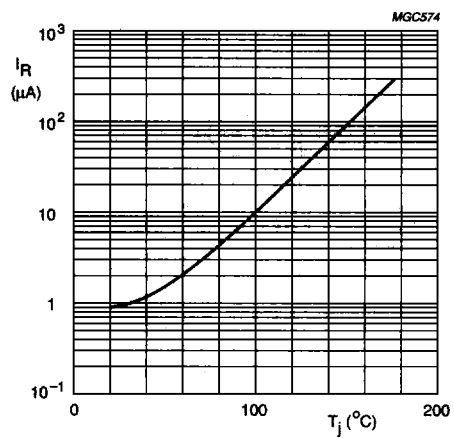
Fast soft-recovery controlled avalanche rectifiers

BYW96 series



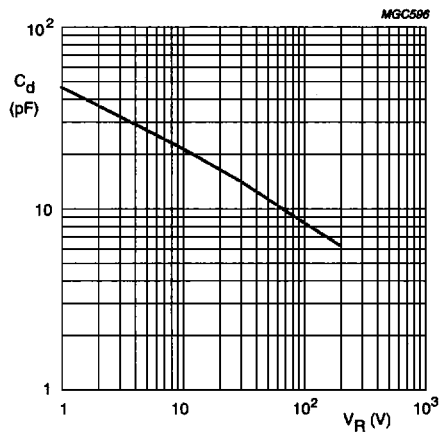
Dotted line: $T_j = 175\text{ }^\circ\text{C}$.
Solid line: $T_j = 25\text{ }^\circ\text{C}$.

Fig.8 Forward current as a function of forward voltage; maximum values.



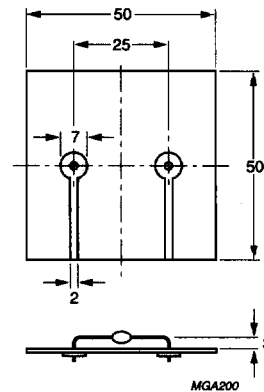
$V_R = V_{RRMmax}$.

Fig.9 Reverse current as a function of junction temperature; maximum values.



$f = 1\text{ MHz}$; $T_j = 25\text{ }^\circ\text{C}$.

Fig.10 Diode capacitance as a function of reverse voltage; typical values.

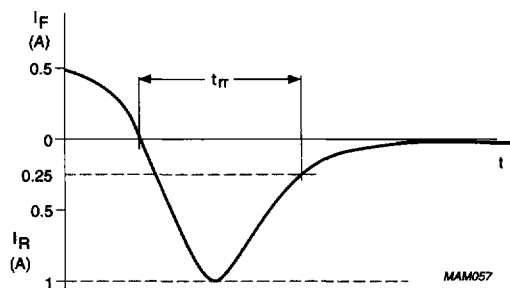
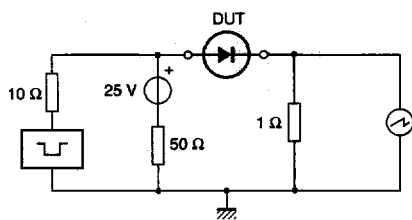


Dimensions in mm.

Fig.11 Device mounted on a printed-circuit board.

Fast soft-recovery controlled avalanche rectifiers

BYW96 series



Input impedance oscilloscope: 1 MΩ, 22 pF; $t_f < 7$ ns.
Source impedance: 50 Ω; $t_f < 15$ ns.

Fig.12 Test circuit and reverse recovery time waveform and definition.

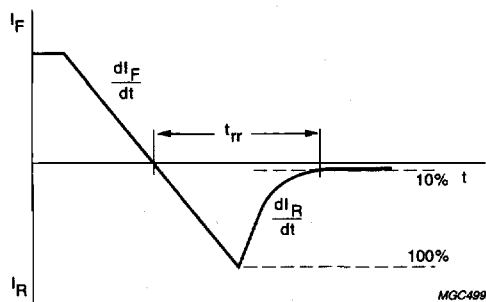


Fig.13 Reverse recovery definitions.