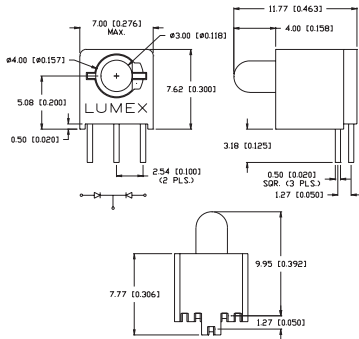




## SSF-LXH409 Series

## T-3mm 3-Leaded, Single Level, Bi-Color, Offset Cathode Lead



### FEATURES / OPTIONS

- ▶ State-of-the-Art, Chip Technology
- ▶ Easy Drop-In Board Installation
- ▶ Right Angle to the Board Position
- ▶ Choice of Colors and Lens Finishes
- ▶ Low Current Versions Available
- ▶ Color or Intensity Sorting Available
- ▶ Blinking LED
- ▶ With Internal Resistor for 5V and 12V Operation
- ▶ Black or Gray Holders for High Contrast
- ▶ Common Anode Version

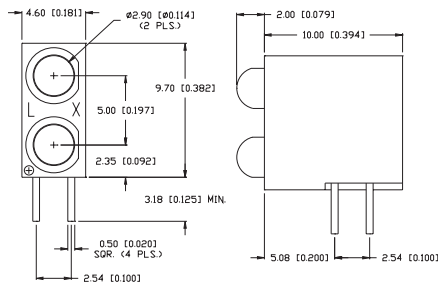
### APPLICATIONS / USES

- ▶ Board Level Status Indicators
- ▶ Board Level Fault Indicators
- ▶ Circuit Troubleshooting Indicators
- ▶ Warning/Alarm Lights
- ▶ Backlighting of Overlays
- ▶ Post Lighting Switches and Keypads

Lumex Part Number	Die Material	Emitted Color	Peak (nm)	Lens	Operating Current (mA)	Operating TYP. Vf (V)	Brightness TYP. Mcd	@ mA	View Angle° 2θ	Component LED Used
SSF-LXH409SISUGW	AllnGaP	Super High Intensity Red	636	Milky White	5-25	2	350	20	60	SSL-LX3059SISUGW
	AllnGaP	Super Ultra Green	574	Diffused	5-25	2.2	130	20		
SSF-LXH409SISYW	AllnGaP	Super High Intensity Red	636	Milky White	5-25	2	250	20	60	SSL-LX3059SISYW
	AllnGaP	Super Yellow	590	Diffused	5-25	2	250	20		
SSF-LXH409SYSUGW	AllnGaP	Super Yellow	590	Milky White	5-25	2	250	20	60	SSL-LX3059SYSUGW
	AllnGaP	Super Ultra Green	574	Diffused	5-25	2.2	80	20		

## SSF-LXH2103XX/2 Series

## T-3mm Dual Tower, 0.2" Leadframe Offset, 2mm Protrusion



### FEATURES / OPTIONS

- ▶ State-of-the-Art, Chip Technology
- ▶ Easy Drop-In Board Installation
- ▶ Right Angle to the Board Position
- ▶ Choice of Colors and Lens Finishes
- ▶ Low Current Versions Available
- ▶ Color or Intensity Sorting Available
- ▶ Blinking LED
- ▶ With Internal Resistor for 5V and 12V Operation
- ▶ Black or Gray Holders for High Contrast
- ▶ Color Combinations

### APPLICATIONS / USES

- ▶ Board Level Status Indicators
- ▶ Board Level Fault Indicators
- ▶ Circuit Troubleshooting Indicators
- ▶ Warning/Alarm Lights
- ▶ Backlighting of Overlays
- ▶ Post Lighting Switches and Keypads

Lumex Part Number	Die Material	Emitted Color	Peak (nm)	Lens	Operating Current (mA)	Operating TYP. Vf (V)	Brightness TYP. Mcd	@ mA	View Angle° 2θ	Component LED Used
<b>HIGH BRIGHTNESS</b>										
SSF-LXH2103SISID/2	AllnGaP	Super High Intensity Red	636	Red Diffused	5-25	2	100	20	60	SSL-LX3044SID
SSF-LXH2103SOSOD/2	AllnGaP	Super Orange	610	Orange Diffused	5-25	2	100	20	60	SSL-LX3044SOD
SSF-LXH2103SUGUGD2	AllnGaP	Super Ultra Green	574	Green Diffused	5-25	2.2	60	20	60	SSL-LX3044SUGD
SSF-LXH2103SYSYD/2	AllnGaP	Super Yellow	590	Yellow Diffused	5-25	2	100	20	60	SSL-LX3044SYD
SSF-LXH2103USBSBD2	InGaN/SiC	Ultra Super Blue	470	Blue Diffused	5-25	3.5	200	20	60	SSL-LX3044USBD



USA/Canada +1-800-278-5666  
Europe +49-6081-964380  
Asia +886-3-5821124



[www.lumex.com](http://www.lumex.com)



USA/Canada +1-847-359-8904  
Europe +49-6081-964381  
Asia +886-3-5821154

1
2
3
4
5
6
7
8
9
10
11
12
13
14
15
16
17
18
19
20
21
22
23
24
25
26
27
28
29